

Why do we plan?



PLANNING



A community changes over time.



1960s

These aerial map images show how a small piece of Chapel Hill has changed over time.

Chapel Hill's needs are a lot different today than they were in the 1960s and the 1980s.

There are more homes, more commercial centers, and more roads to connect people and places.



1980s

Franklin Street



Fordham Blvd





A community changes over time.

The Town is just like you and me. It changes and grows over time. These changes are often necessary and sometimes difficult.

How do you manage the needs of a growing town?

How can you protect the health and welfare of its people?

How do ensure access to transit and open space?

And how can all this be done while being good stewards of the environment?

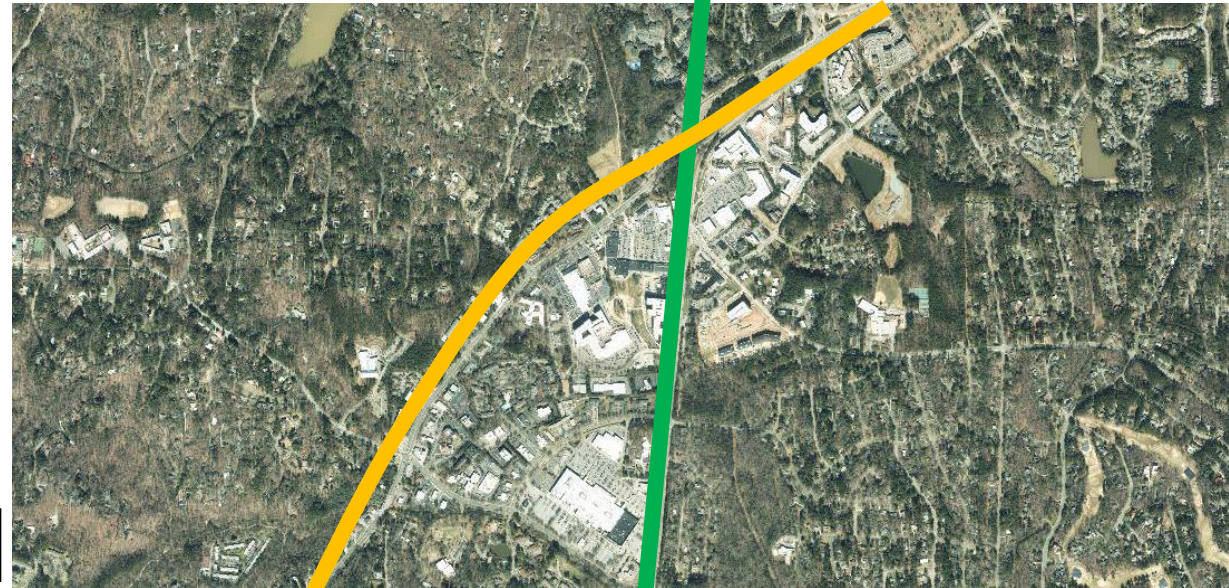
We plan for it.

Franklin Street

Fordham Blvd

1990s

2020s





Plans set the vision for the community and describe goals for the future.



A Place for Everyone



Community Prosperity & Engagement



Getting Around



Good Places, New Spaces



Nurturing Our Community



Town & Gown Collaboration



Planning is a tool to manage growth.



Plans guide how the town changes over the next 20-30 years. **Chapel Hill 2020**, the town's comprehensive plan, sets the overall vision that other plans support. The **Future Land Use Map** (FLUM) identifies areas for growth. The **Complete Community Strategy** supports a walkable, connected community in which everyone has equal access to necessary services and amenities.



Plans are made for people, by people.



Plans are based on people's thoughts, ideas, and experiences.

Plans involve input from residents, businesses and other stakeholder groups.

Creating a plan takes time and requires careful consideration of factors and inputs from all perspectives.



Plans are needed to adopt land use rules.

Local governments in North Carolina need a comprehensive plan or land use plan to adopt and enforce land use rules like Chapel Hill's Land Use Management Ordinance (LUMO).

The LUMO is also a tool to implement goals outlined in the town's plans.





Plans cover a range of topics.

Identify and prioritize the community's values.



Consider transportation infrastructure and connectivity so people can move around Town efficiently and safely.

Determine areas for development and guide land use decisions.



Address housing needs, economic development and the provision of amenities and services.



Plans cover a range of topics.

Promote social interaction and community engagement.



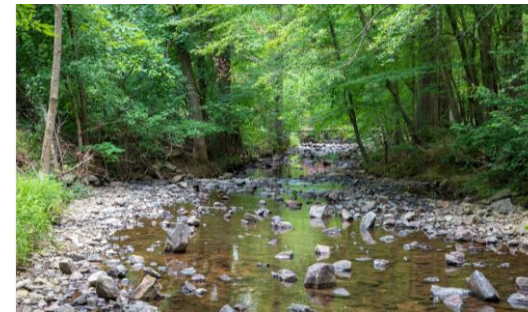
Prioritize social equity through policies, programs, and rules.



Emphasize access to green space and identify areas for open space preservation.



Preserve natural and cultural resources.





LEARN MORE ABOUT PLANNING AT
WWW.TOWNOFCHAPELHILL.ORG/LUMO