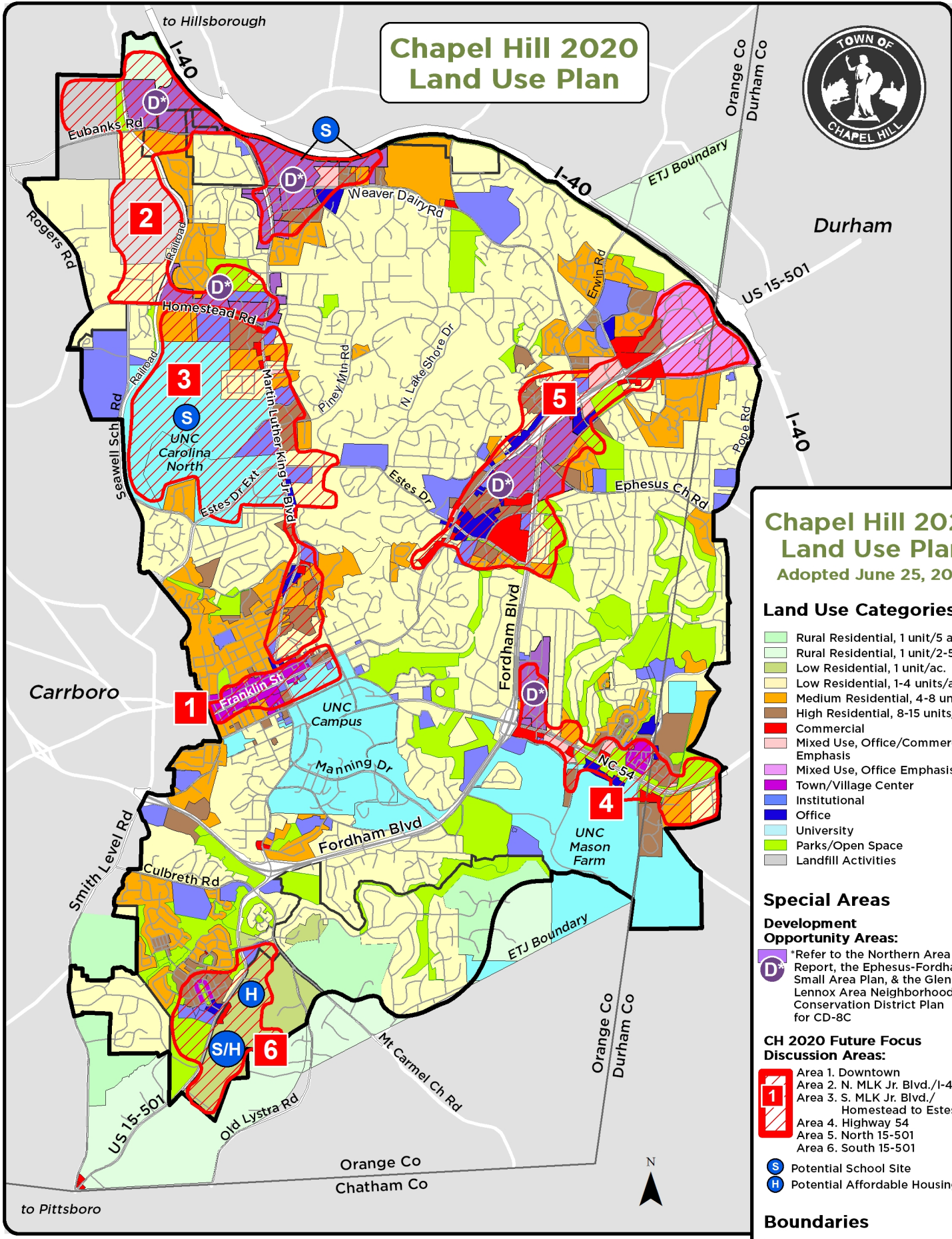


Chapel Hill 2020 Land Use Plan



Chapel Hill 2020 Land Use Plan Adopted June 25, 2012

- ### Land Use Categories
- Rural Residential, 1 unit/5 ac.
 - Rural Residential, 1 unit/2-5 ac.
 - Low Residential, 1 unit/ac.
 - Low Residential, 1-4 units/ac.
 - Medium Residential, 4-8 units/ac.
 - High Residential, 8-15 units/ac.
 - Commercial
 - Mixed Use, Office/Commercial Emphasis
 - Mixed Use, Office Emphasis
 - Town/Village Center
 - Institutional
 - Office
 - University
 - Parks/Open Space
 - Landfill Activities

- ### Special Areas
- #### Development Opportunity Areas:
- *Refer to the Northern Area T.F. Report, the Ephesus-Fordham Small Area Plan, & the Glen Lennox Area Neighborhood Conservation District Plan for CD-8C

- ### CH 2020 Future Focus Discussion Areas:
- Area 1. Downtown
 - Area 2. N. MLK Jr. Blvd./I-40
 - Area 3. S. MLK Jr. Blvd./Homestead to Estes Dr.
 - Area 4. Highway 54
 - Area 5. North 15-501
 - Area 6. South 15-501

- Potential School Site
- Potential Affordable Housing Site

- ### Boundaries
- Chapel Hill Town Limits
 - Urban Services Boundary

