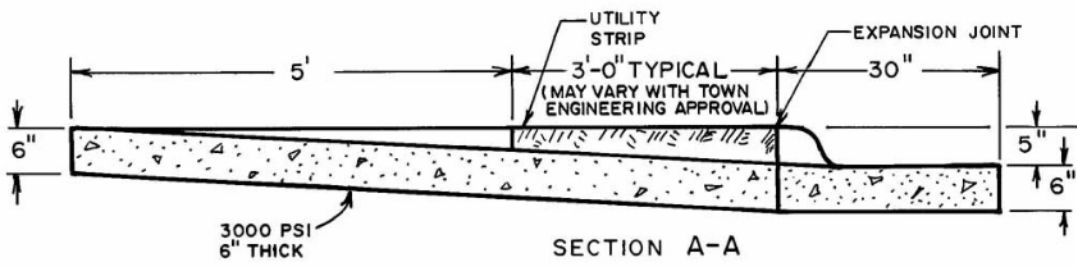
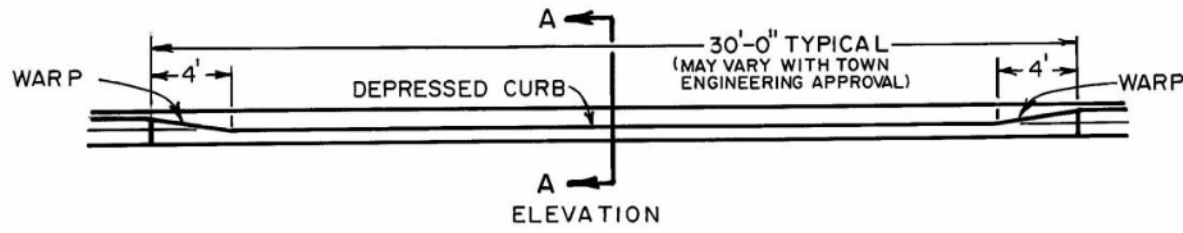
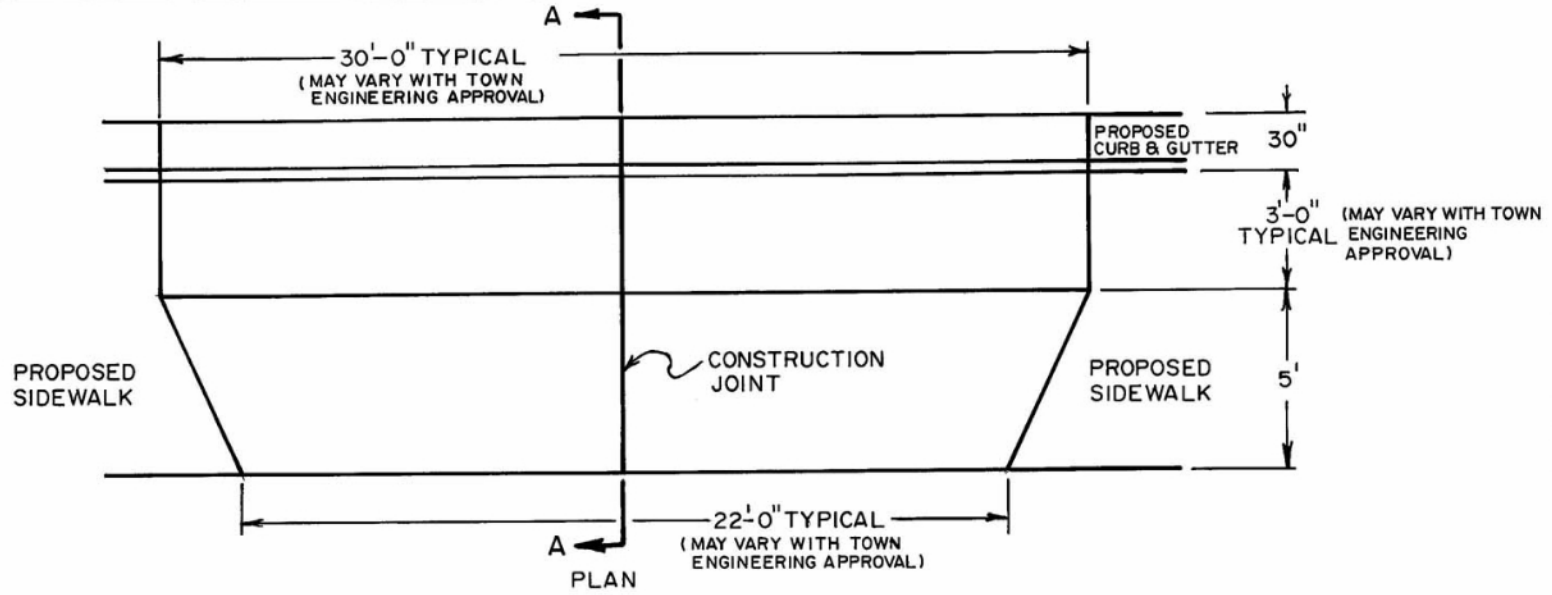




ENGINEERING DEPARTMENT

STANDARD DETAILS

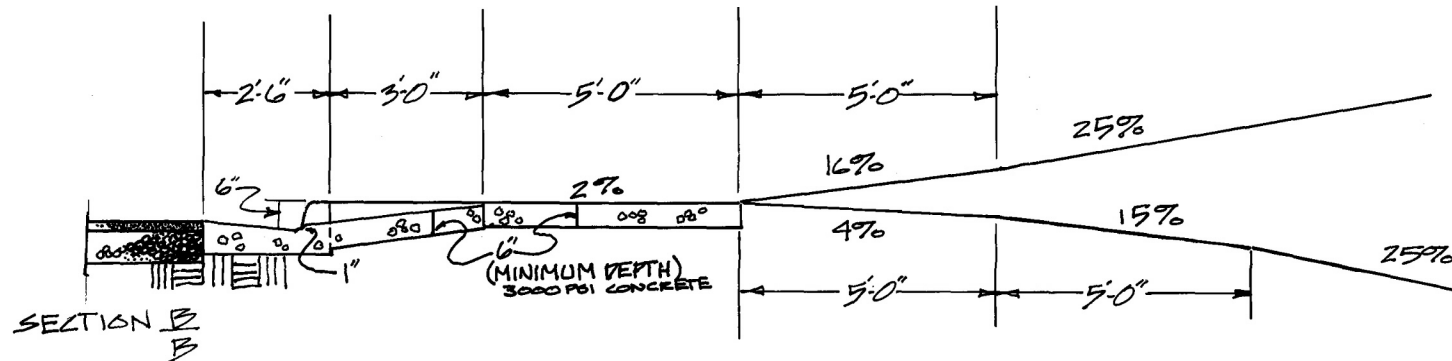


NO SCALE

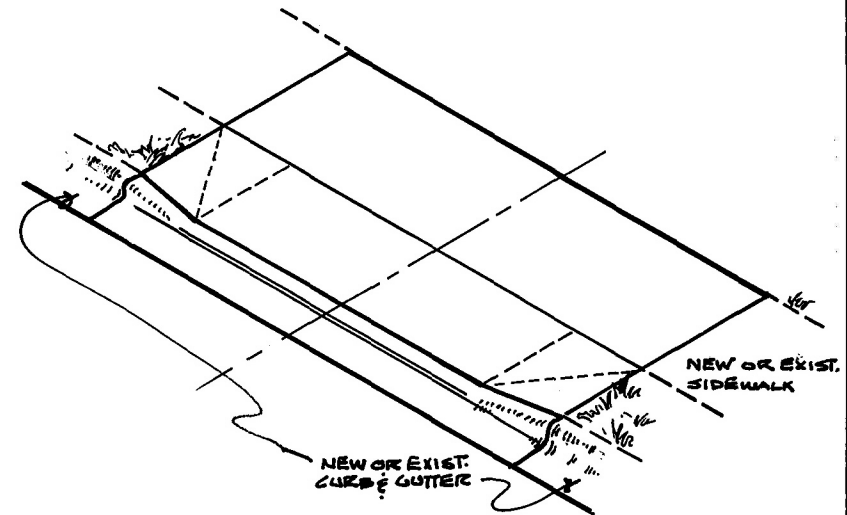
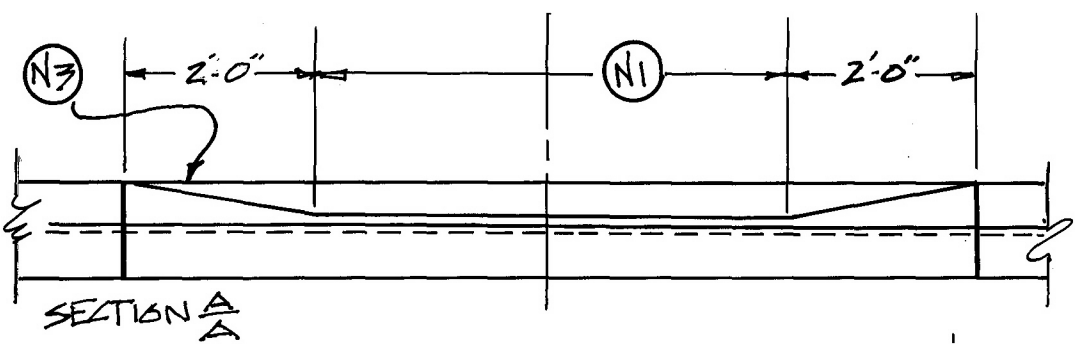
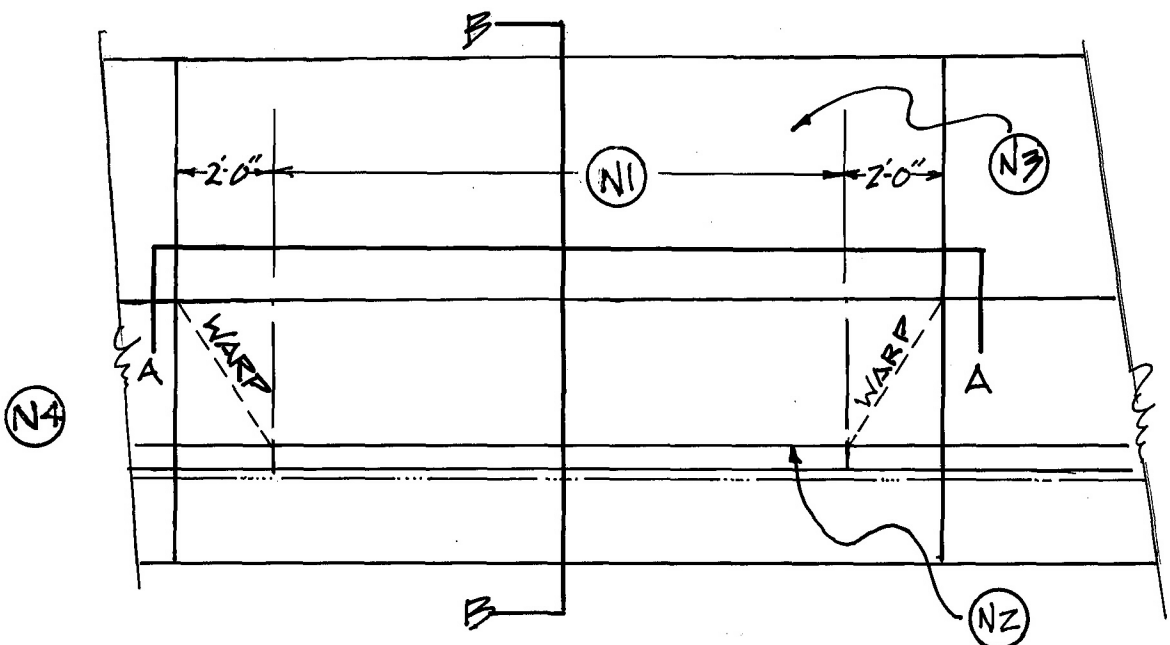
TITLE FAN TYPE DRIVEWAY ENTRANCE	REVISIONS			DET. NO. D-1
	NO	DATE	BY	



ENGINEERING DEPARTMENT
STANDARD DETAILS



- (N1) 12' STANDARD WIDTH
8' MINIMUM
20' MAXIMUM
- (N2) BACK OF CURB EXPANSION
JOINT (NOT USED ON
MONILITH FOUR)
- (N3) 3000 PSI CONCRETE
(MINIMUM)
- (N4) DRIVE RAMP & SIDEWALK
6" MINIMUM



NO SCALE

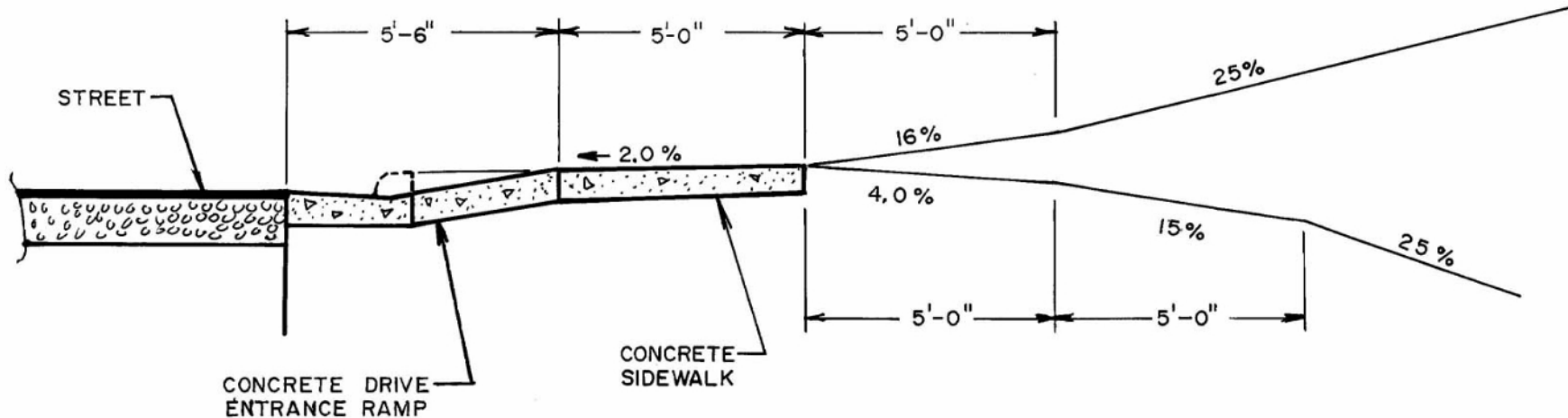
TITLE
 RESIDENTIAL DRIVEWAY
 ENTRANCES
 ENTRANCES

REVISIONS		
NO	DATE	BY
1	4/02	MCR

DET.NO.
 D1.01



ENGINEERING DEPARTMENT
STANDARD DETAILS



NOTE:

- I. GRADES ARE SHOWN FOR SINGLE FAMILY & TWO FAMILY LOTS ONLY. COMMERCIAL TYPE USES MUST FLATTEN GRADES ACCORDINGLY FOR HIGHER VOLUMES OF TRAFFIC, ACCORDING TO THE TOWN ENGINEER'S DIRECTION.

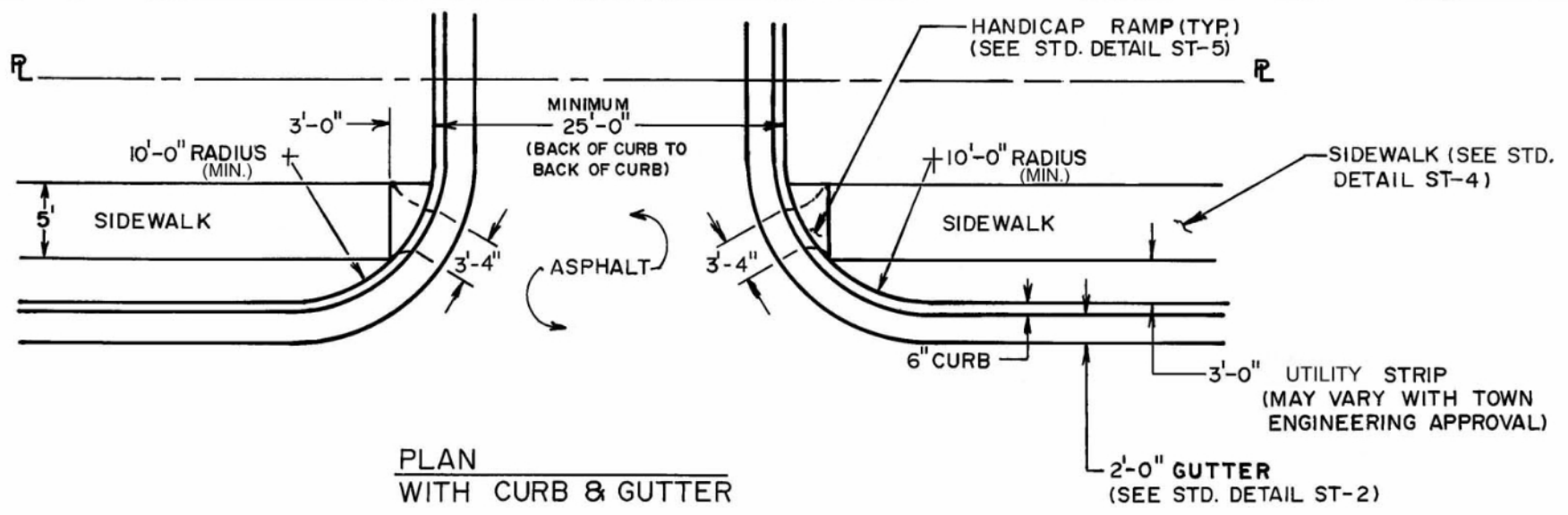
NO SCALE

TITLE DRIVEWAY GRADES	REVISIONS			DET.NO. D-2
	NO	DATE	BY	

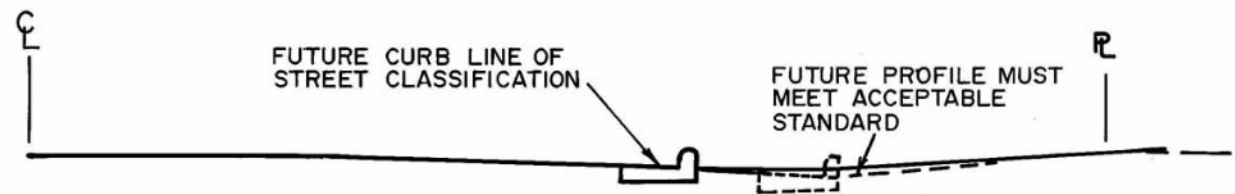


ENGINEERING DEPARTMENT

STANDARD DETAILS



PLAN
WITH CURB & GUTTER



SECTION
NO SCALE

NO SCALE

NOTES:

1. FOR COMMERCIAL & MULTI-FAMILY USES ONLY.
2. DRIVES TO BE GRADED TO DRAIN TOWARD STREET FROM PROPERTY LINE & AWAY FROM STREET FROM PROPERTY LINE UNLESS STORM DRAINAGE STRUCTURES ARE PROVIDED TO INTERCEPT STORM FLOWS.
3. DRIVE GRADE PROFILE SHALL BE DESIGNED TO TIE IN WITH ULTIMATE WIDENING OF STREET.

TITLE
DRIVEWAY-STREET
TYPE, CURB &
GUTTER SECTION

REVISIONS		
NO	DATE	BY

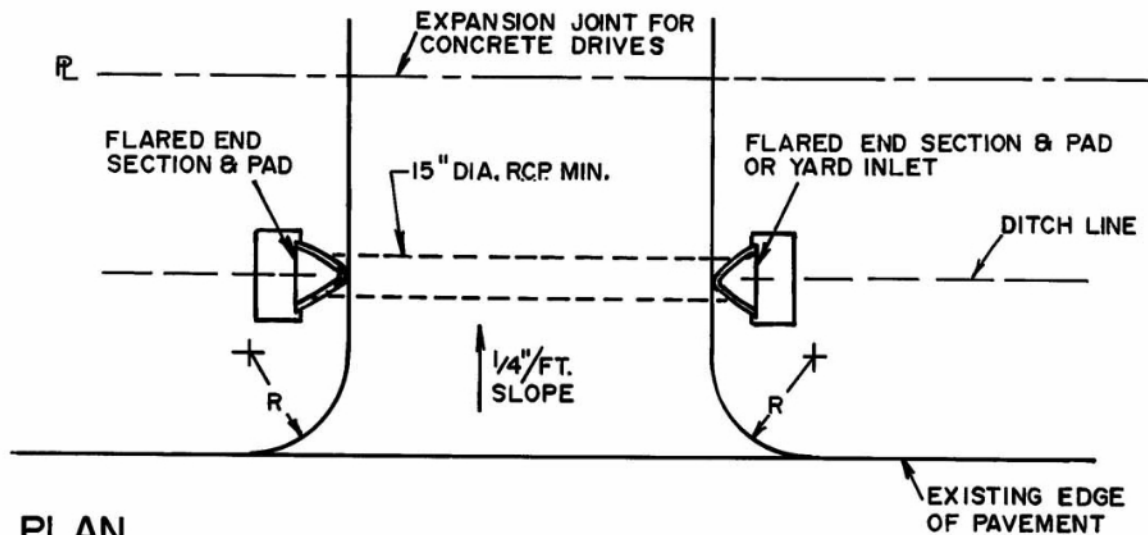
DET.NO.
D-3



ENGINEERING DEPARTMENT
STANDARD DETAILS

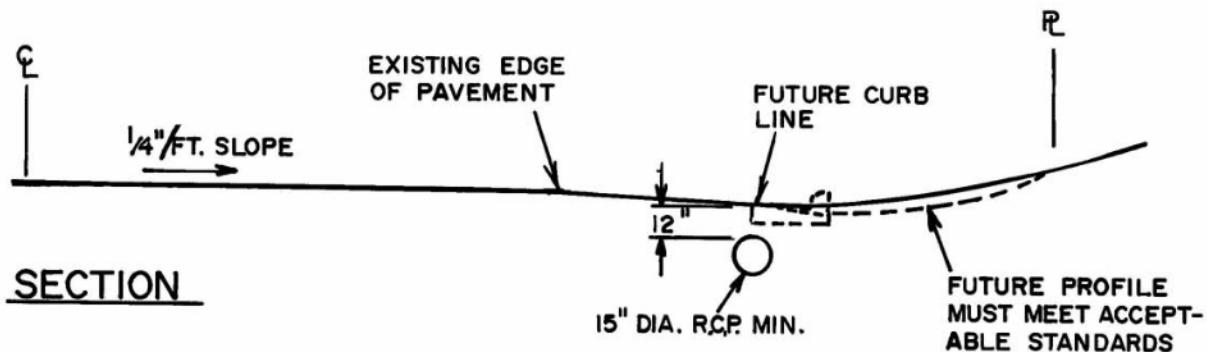
NOTES:

1. FOR SINGLE FAMILY OR TWO FAMILY USE ONLY.
2. ASPHALT DRIVES ARE PREFERRED: CONCRETE WILL BE ALLOWED. IF CONCRETE DRIVE IS USED, AN EXPANSION JOINT SHALL BE PROVIDED AT THE PROPERTY LINE OR BACK OF FUTURE SIDEWALK LINE WHICHEVER IS FURTHER FROM STREET.
3. GRADE PROFILE SHALL BE DESIGNED TO PROPERLY TIE IN WITH THE ULTIMATE WIDENING OF THE STREET.
4. DRIVEWAY PROFILE SHALL FALL @ 1/4"/FT. FROM EDGE OF PAVEMENT TO C OF ROADSIDE DITCH. PIPE SHALL BE PLACED TO HAVE 12" OF CLEARANCE BELOW FINISHED PAVEMENT AT THIS POINT.



PLAN

NO CURB & GUTTER ON STREET



SECTION

NO SCALE

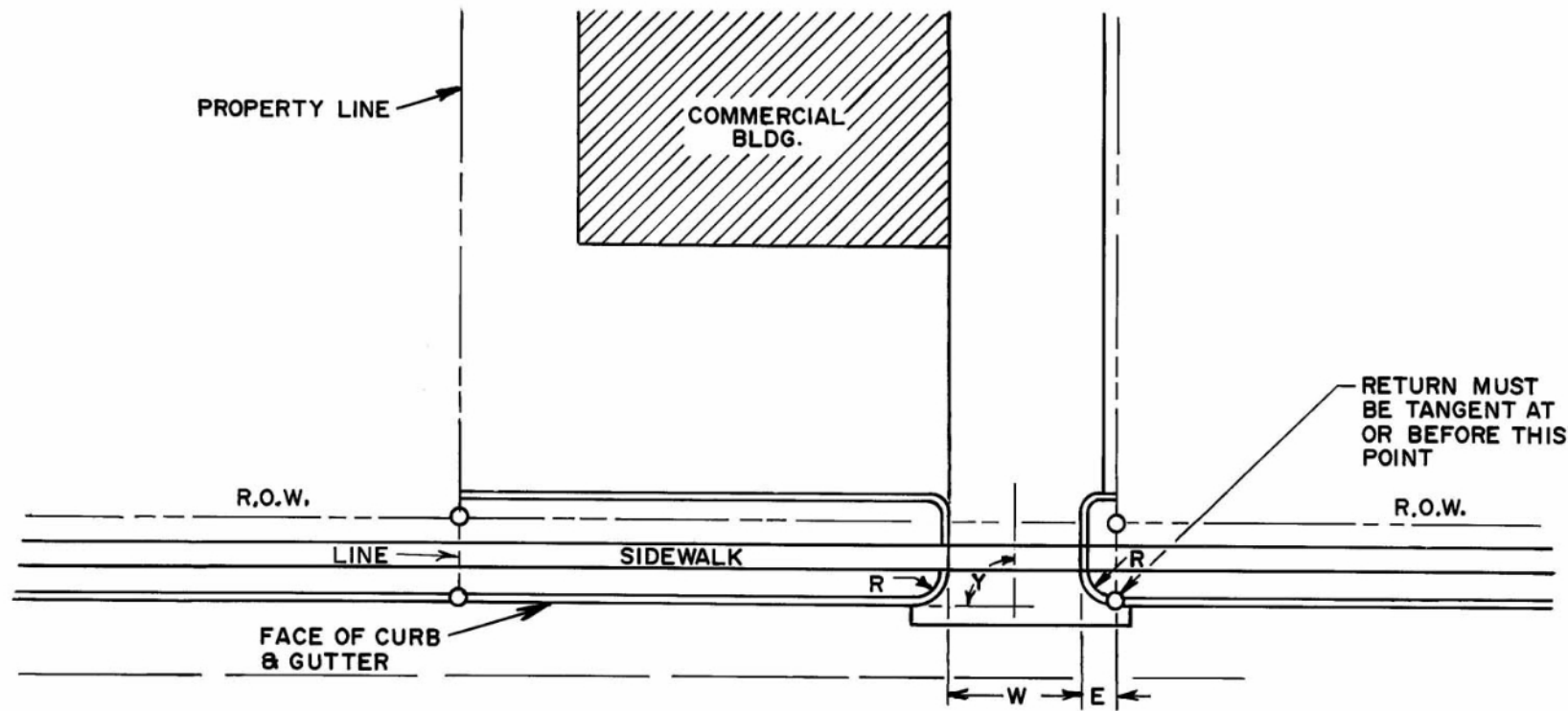
TITLE
 DRIVEWAY-NO CURB-
 DITCH SECTION
 STREET

REVISIONS		
NO	DATE	BY

DET. NO.
 D-4



ENGINEERING DEPARTMENT
STANDARD DETAILS



NOTES:

1. R - 3' (TOWN STD. RAMP)
 - 10' MIN., 20' MAX. (STREET TYPE)
 - W - (STREET TYPE)
 - ONE WAY: 12' MIN., 20' MAX.
 - TWO WAY: 20' MIN., 36' MAX.
 - E - 3' MIN.
 - Y - 90° PREFERRED
 - 75°-90° WITH TOWN ENGINEERING APPROVAL
2. ALL RADII ARE TO BACK OF CURB.

SINGLE DRIVEWAY COMMERCIAL ESTABLISHMENT
 FIGURE 1

NO SCALE

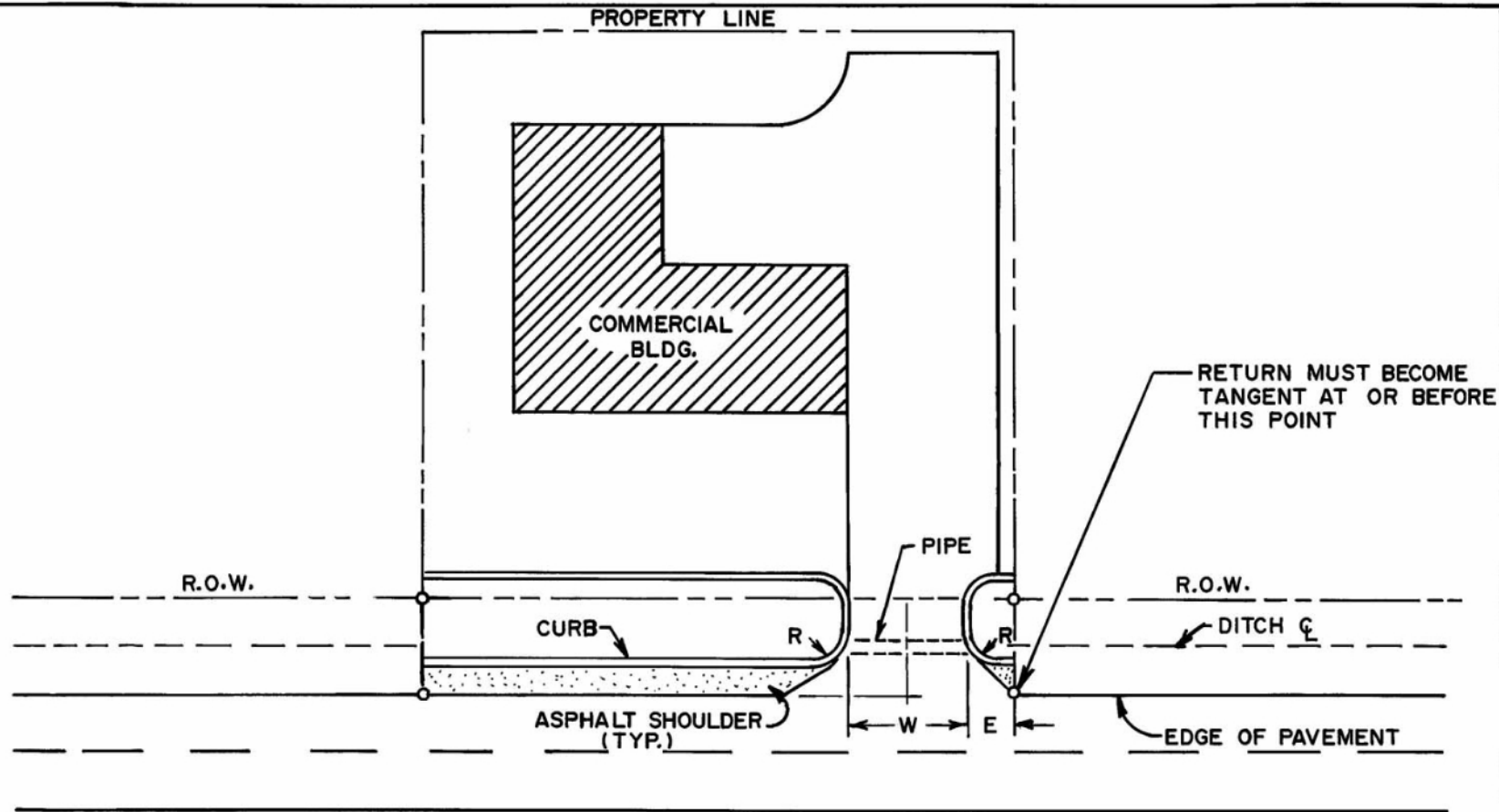
TITLE		
COMMERCIAL SINGLE DRIVEWAY-CURB AND GUTTER		

REVISIONS		
NO	DATE	BY

DET.NO.
 D-5



ENGINEERING DEPARTMENT
STANDARD DETAILS



NOTES:

1. R- 10' MIN., 30' MAX.
E- 10' MIN.
W- ONE WAY, 12' MIN., 20' MAX.
- TWO WAY, 20' MIN., 36' MAX.
2. ALL RADII ARE TO BACK OF CURB.

SINGLE DRIVEWAY COMMERCIAL ESTABLISHMENT

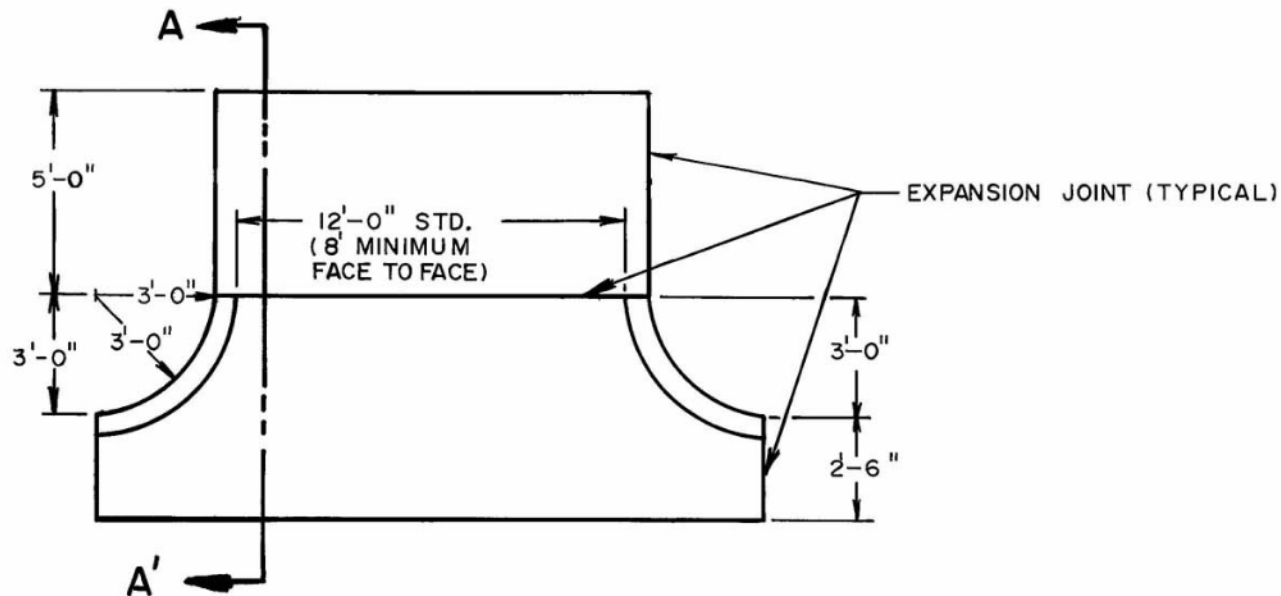
FIGURE 3

NO SCALE

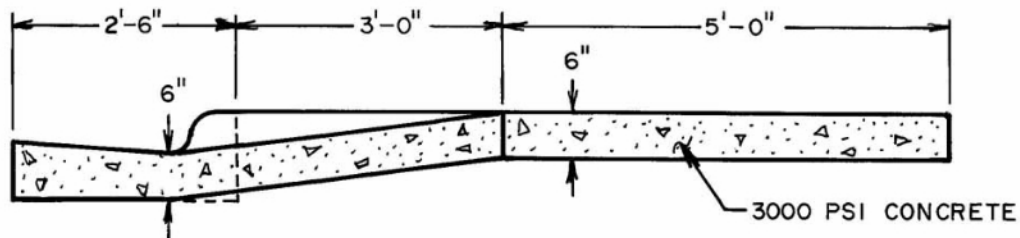
TITLE	REVISIONS			DET.NO.
	NO	DATE	BY	
COMMERCIAL SINGLE DRIVEWAY - DITCH SECTION				D-6



ENGINEERING DEPARTMENT
STANDARD DETAILS



TYPICAL DRIVEWAY APRON



DRIVEWAY SECTION A - A'

NO SCALE

TITLE
 DRIVEWAY RAMP -
 CURB & GUTTER
 SECTION (ALT)

REVISIONS

NO	DATE	BY

DET.NO.

D-7