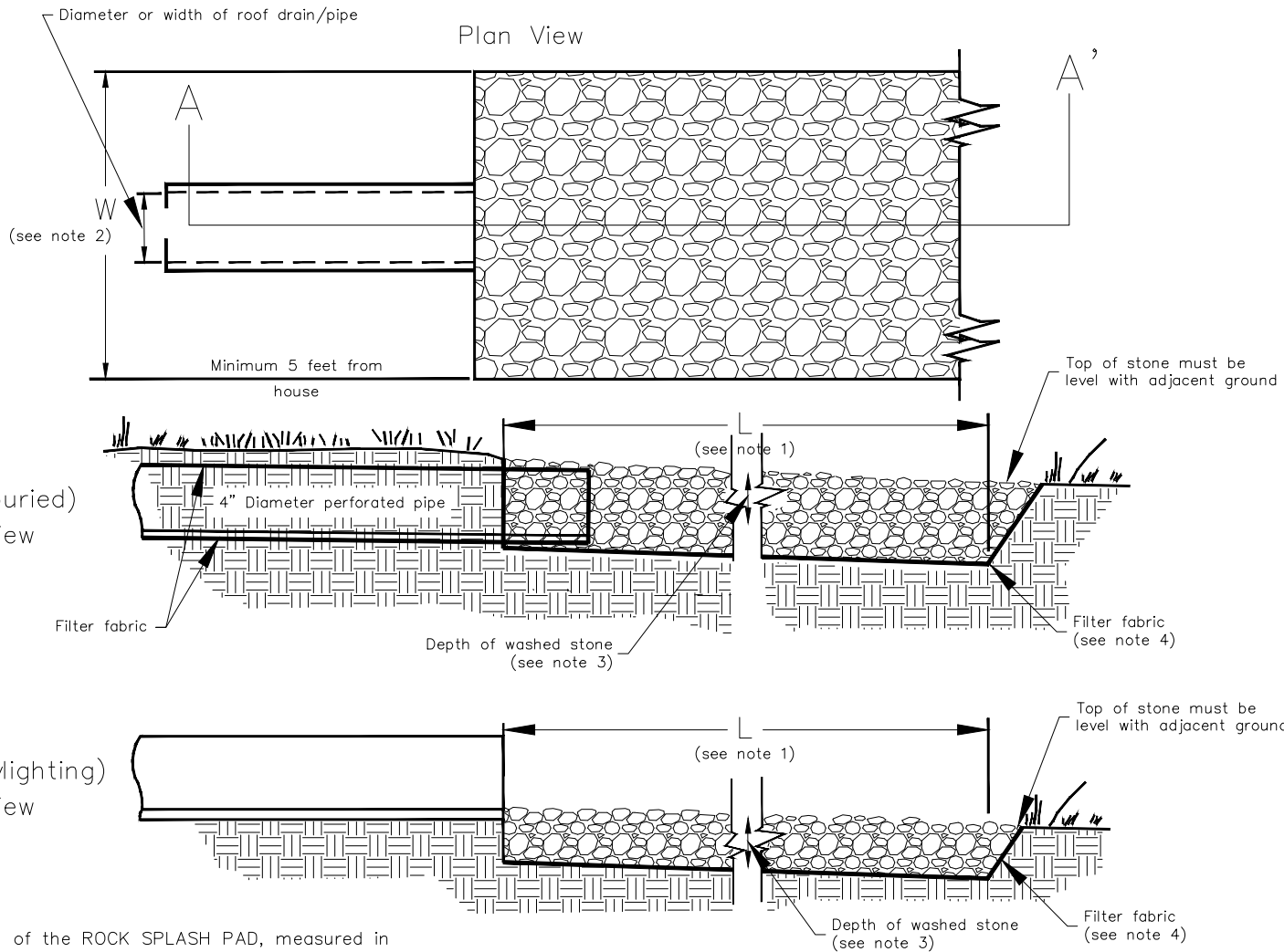




ENGINEERING DEPARTMENT
STANDARD DETAILS

Rock Splash Pad
(Energy Dissipator)



GENERAL NOTES:

1. L is the Length of the ROCK SPLASH PAD, measured in direction of flow. The minimum Length shall be 6 times the diameter or width of the roof drain/pipe, but not less than 3 feet.
2. W is the Width of the ROCK SPLASH PAD, measured perpendicular to direction of flow. The minimum Width shall be 3 times the diameter or width of the roof drain/pipe, but not less than 2 feet.
3. For stone with a d_{50} = 4 inches, the stone depth shall be a minimum of 9 inches. For stone with a d_{50} = 6 inches, the stone depth shall be a minimum of 12 inches.
4. Filter fabric must be installed between rock and soil.
5. Stone shall be washed #57 gravel or equivalent.
6. No more than 1000 sq. ft. of roof area may be drained to a single rock splash pad.
7. Minimum depth of #57 stone shall be 6 inches and varies with existing grade conditions.

NOTE: DRAWING NOT TO SCALE

| | | | | |
|-----------------|--|-----------|----|----------|
| TITLE: | | REVISIONS | | DET. NO. |
| ROCK SPLASH PAD | | 08/13 | 15 | SD-12 |