



Town of Chapel Hill Parking Services

January 6, 2017



Why Parking?



Parking Services



- Division of the Police Department
- Manages Town On-street and Off-street Parking and Enforcement
- Annual Budget \$2,694,007*

**Adopted FY17 Budget*

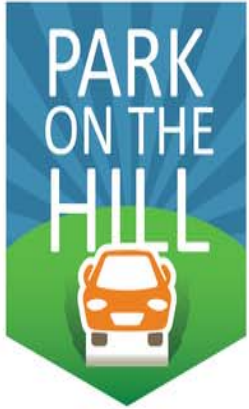
Mission:

- ***Provide safe and efficient on-street and off-street parking***
- ***Enforce parking regulations***
- ***Parking Fund financial self-sufficiency***

Parking Inventory

On-Street Spaces	186
Off-Street Lot Spaces	469
Off-Street Deck Spaces	463
Total	1,118





Downtown Chapel Hill Parking Guide

	Nighttime
	All Day
	Valet
.....	Metered



Parking Challenges

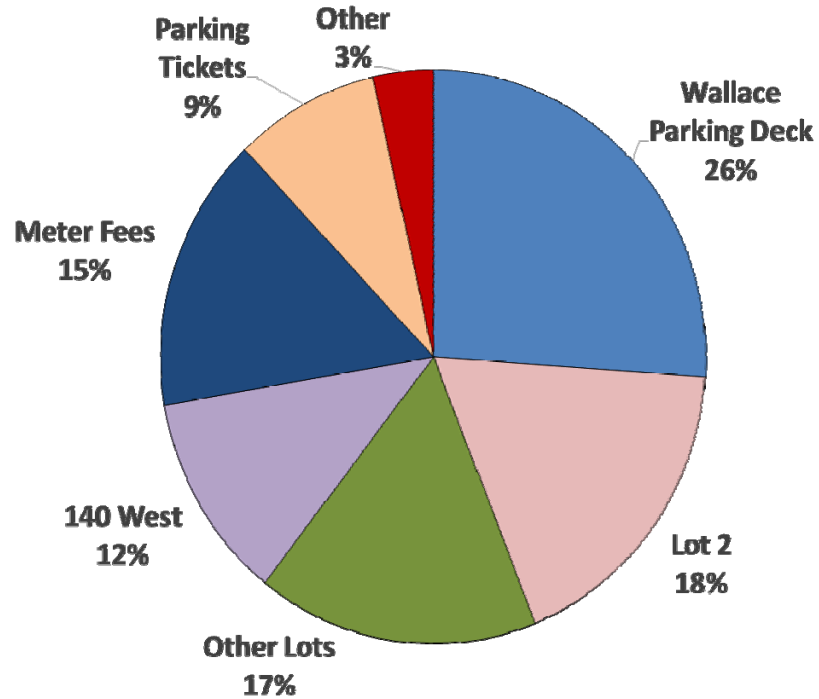
- Parking Fund is struggling financially
- Major maintenance needs
- Encouraging parking turnover
- Matching inventory with demand
- Trade-offs



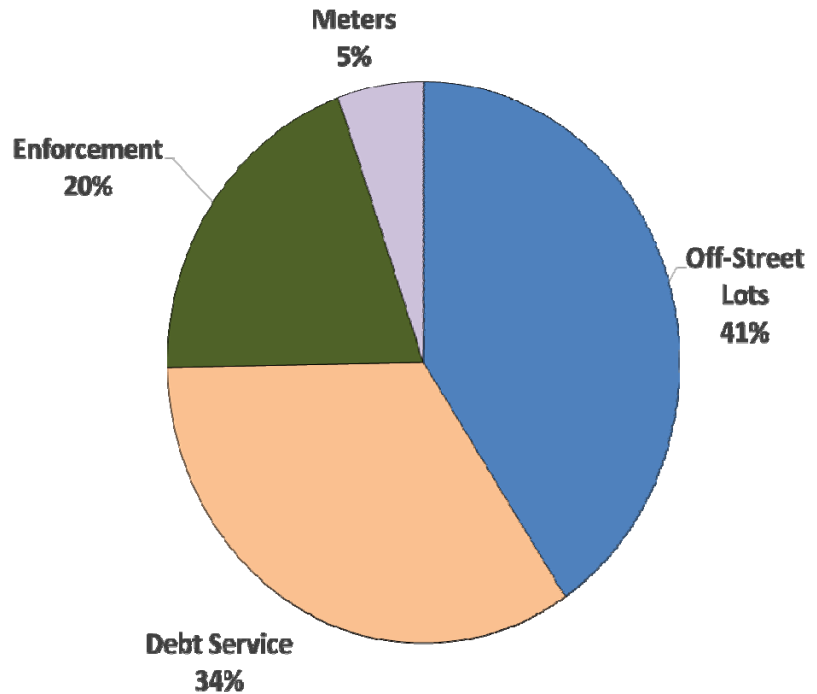
Parking Revenues & Costs

FY17 Adopted Budget

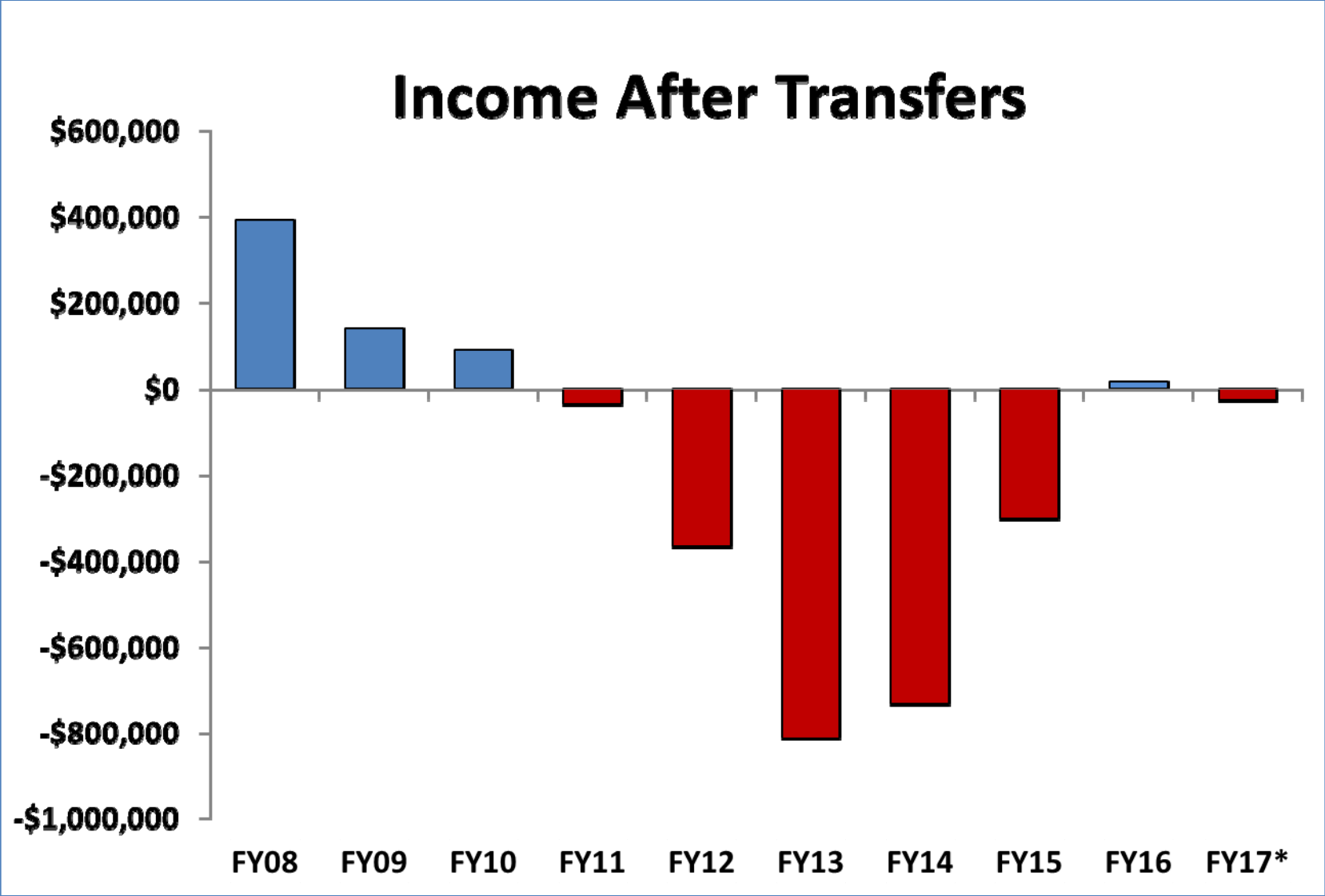
Revenues



Costs

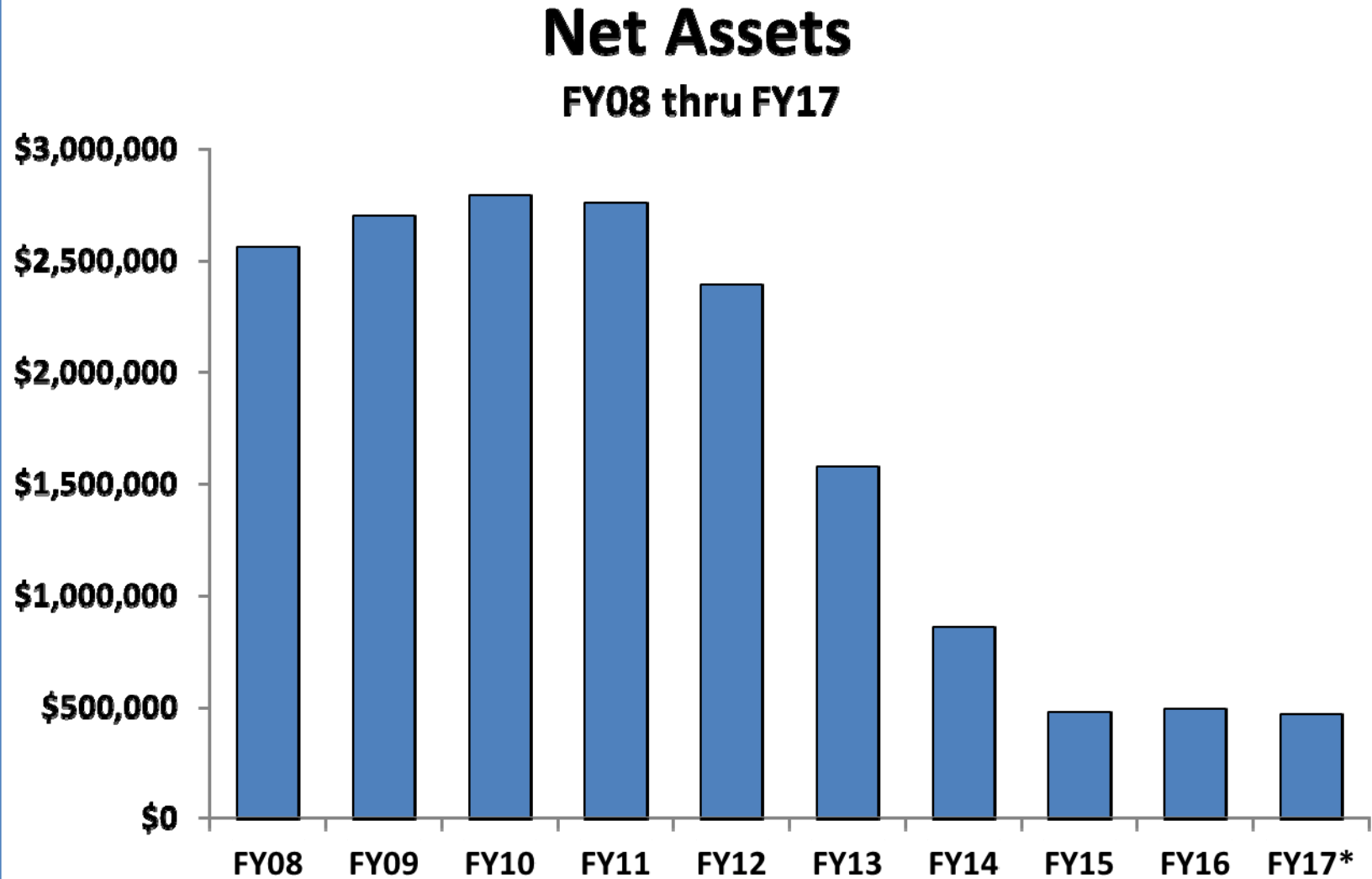


Parking Fund



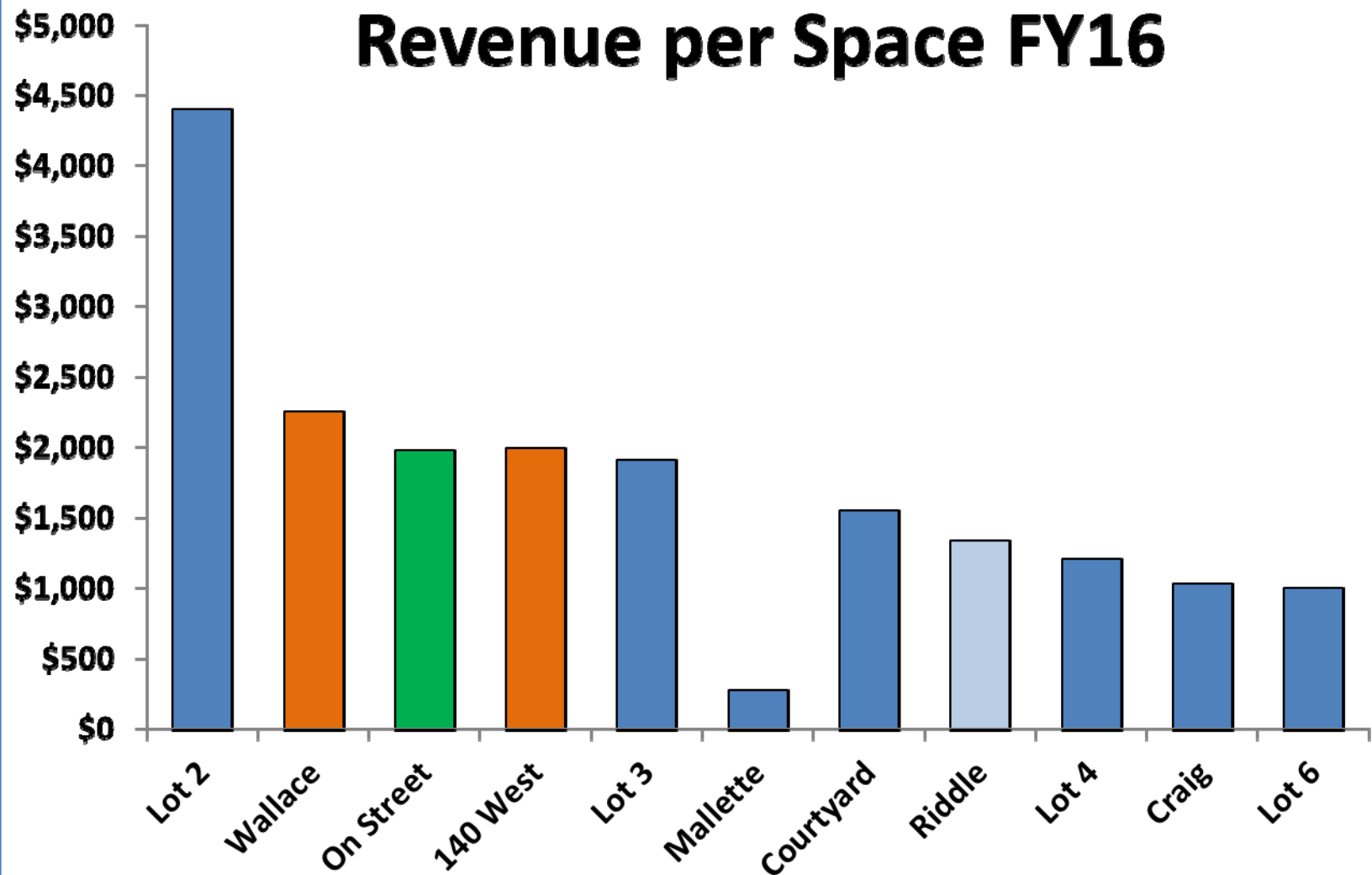
*Estimate to year-end

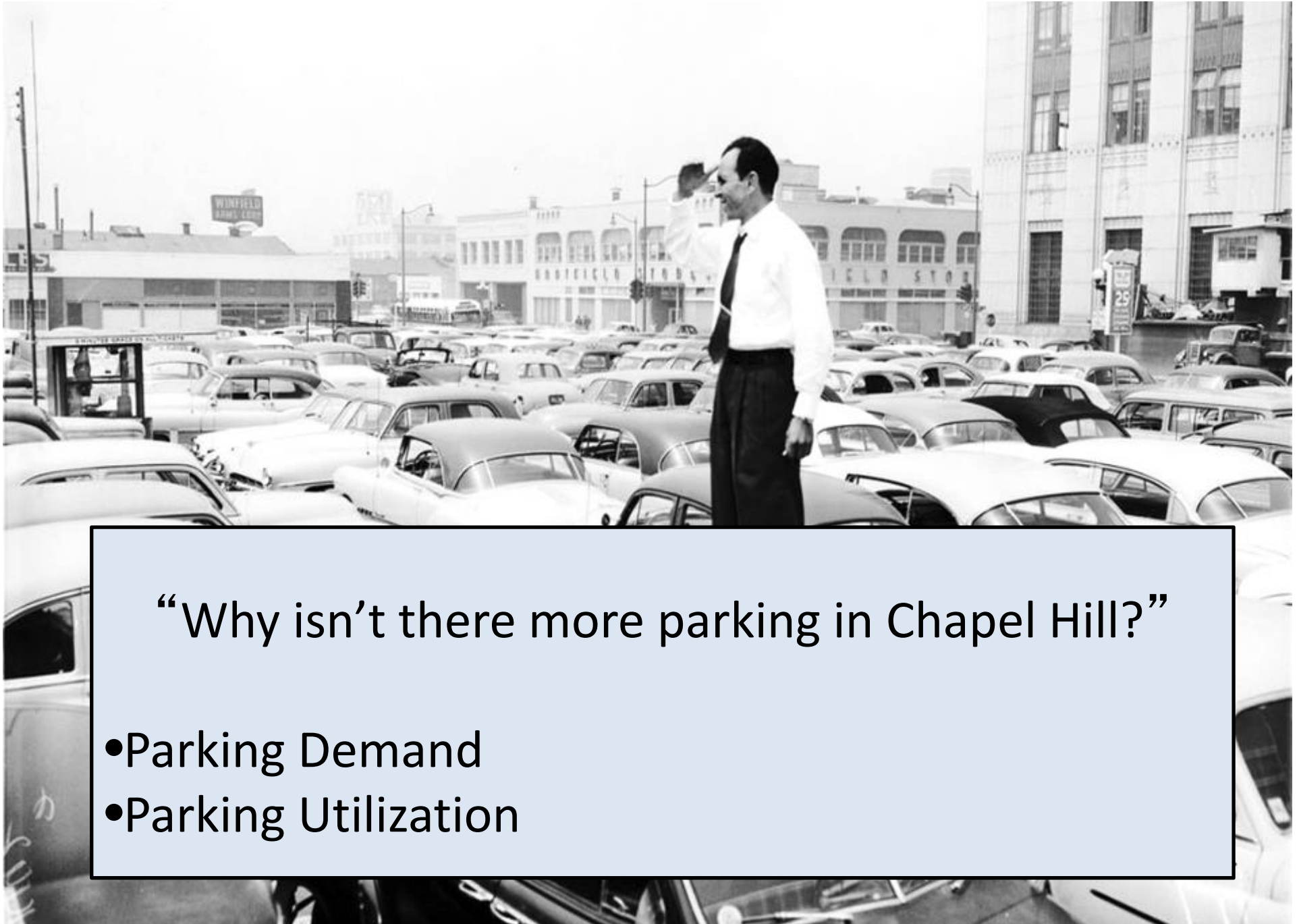
Parking Fund



**Estimate to year-end*

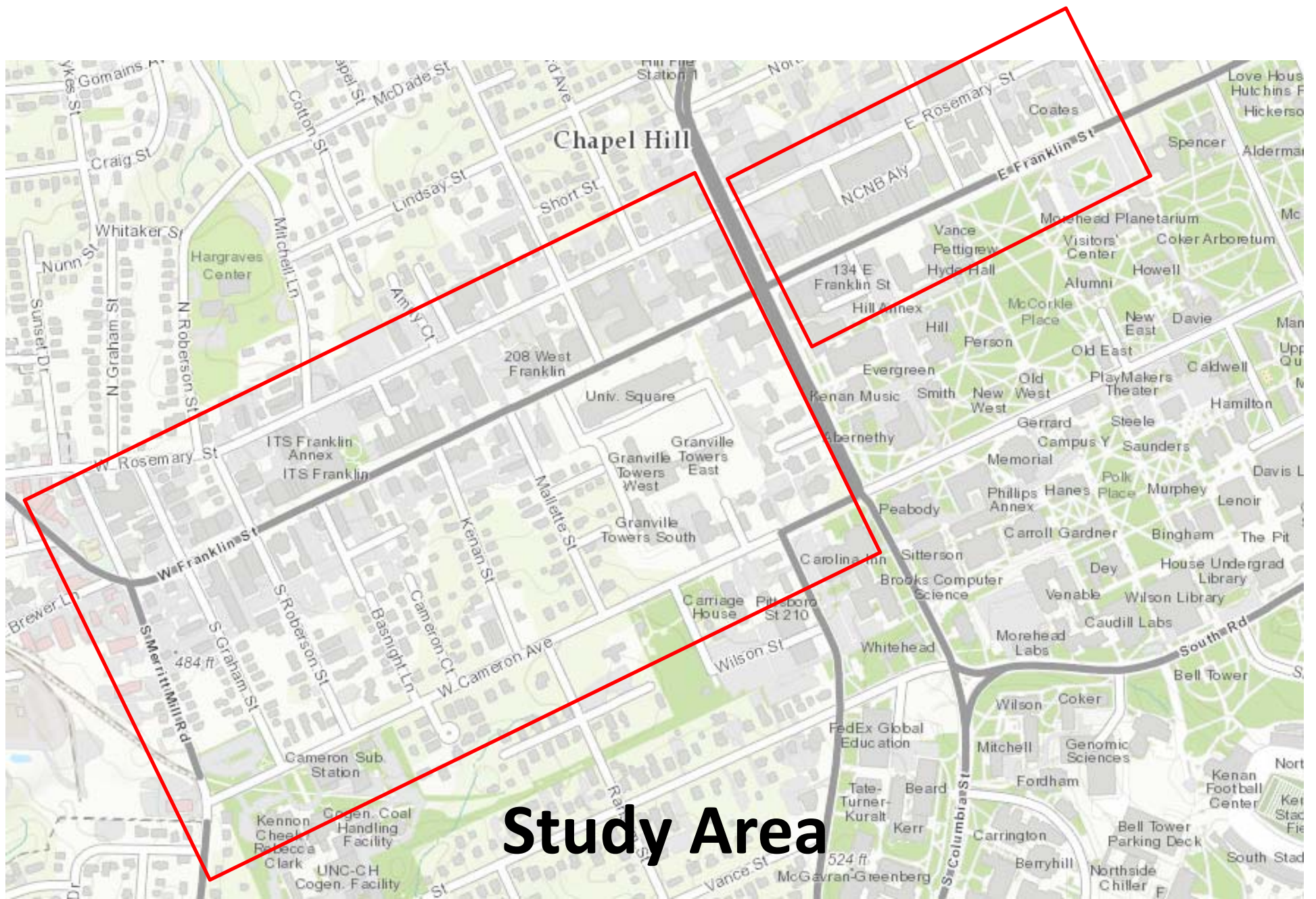
Parking Fund





“Why isn’t there more parking in Chapel Hill?”

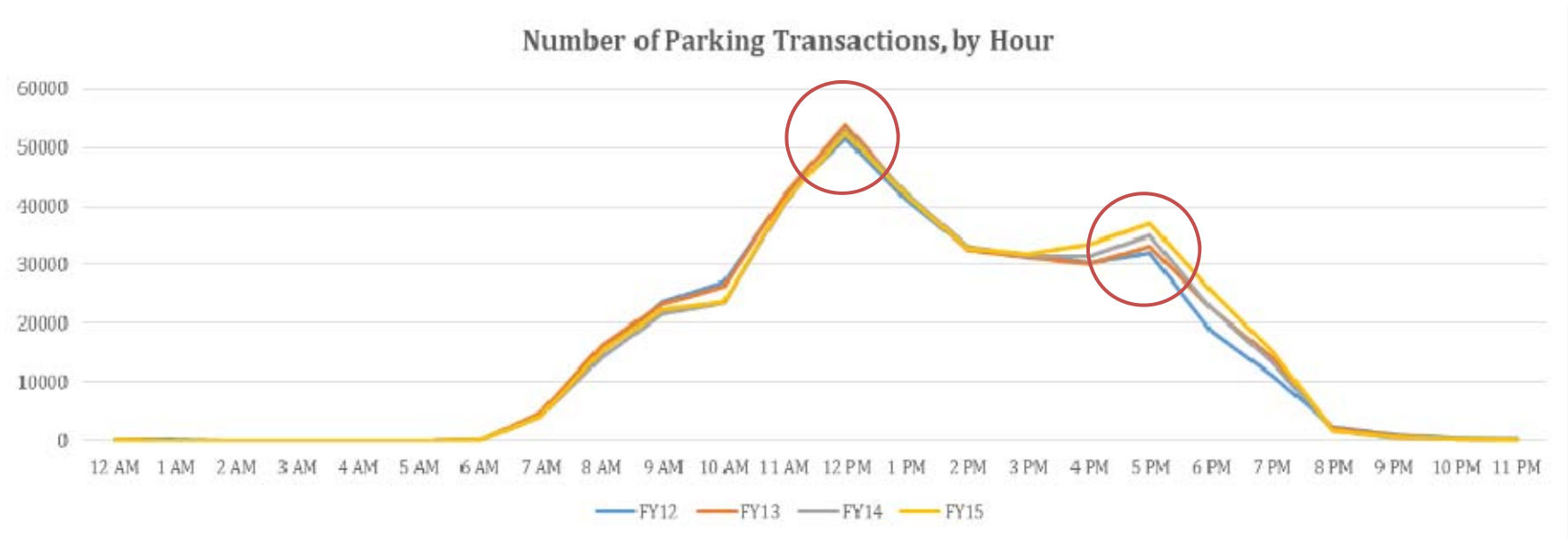
- Parking Demand
- Parking Utilization



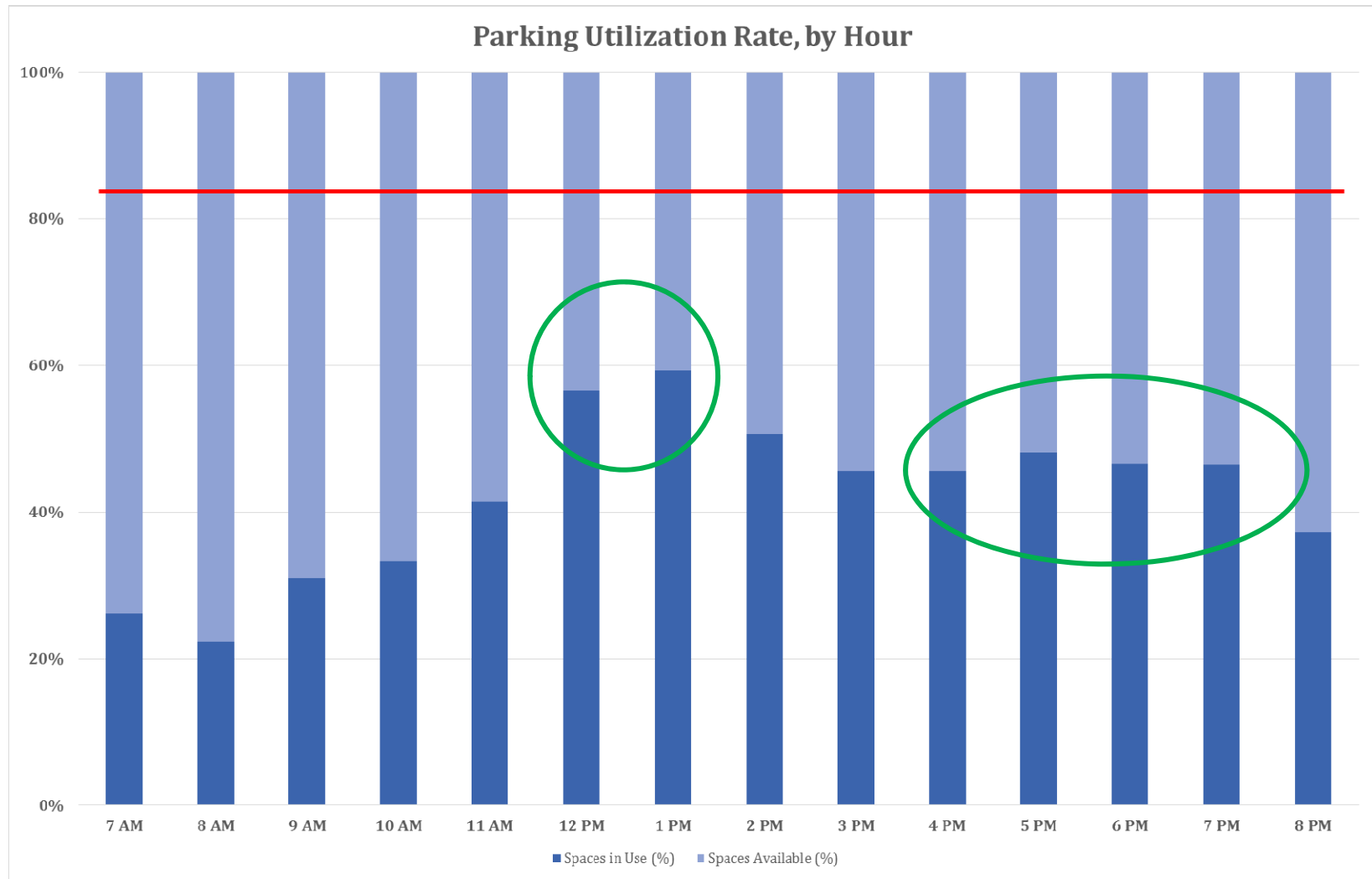
Chapel Hill

Study Area

Parking Demand – By Hour



Parking Utilization – Study Area



Insights on Parking Demand

- Remarkably consistent demand trends, regardless of year, season or week/weekend
- Daytime peaks in parking demand also consistent and seemingly driven by demand for restaurants, retail

The Town controls about 25% of Downtown Parking



Private Parking Supports Individual Businesses



Public Parking Supports the Entire Downtown



An imbalance between Public and Private Parking can create bad outcomes



What's New?

- Expansion of Employee Parking Program
- Considering extending on-street parking limits to 3 hours

Questions?

