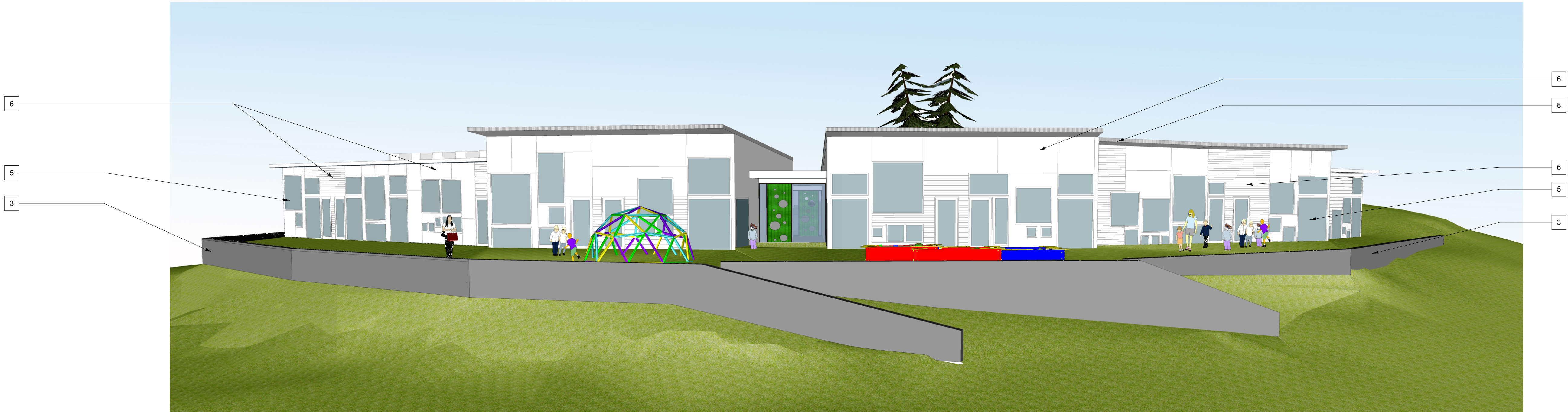


elevation key notes

- 1 wood siding installed as rain screen; cypress or similar; parapet wall is 15'-6" above finished floor and average grade around building
- 2 aluminum storefront windows and doors
- 3 concrete retaining wall, painted or stained
- 4 hvac equipment mounted on roof
- 5 vinyl windows, various sizes
- 6 fiber cement siding, various types including 4" lap, 4" shiplap, monolithic panels with aluminum reveal trim
- 7 existing double 20" hemlock on hilltop to remain
- 8 galvalume standing seam roof
- 9 white TPO roof
- 10 mosaic tile wall finish
- 11 parking lot
- 12 circular driveway, drop off



1 aerial view, looking southwest  
A2.02 no scale



2 building elevation, looking southwest  
A2.02 no scale