

Planning and Development Update



Ben Hitchings, FAICP, CZO
Director of Planning & Development Services
September 7, 2018

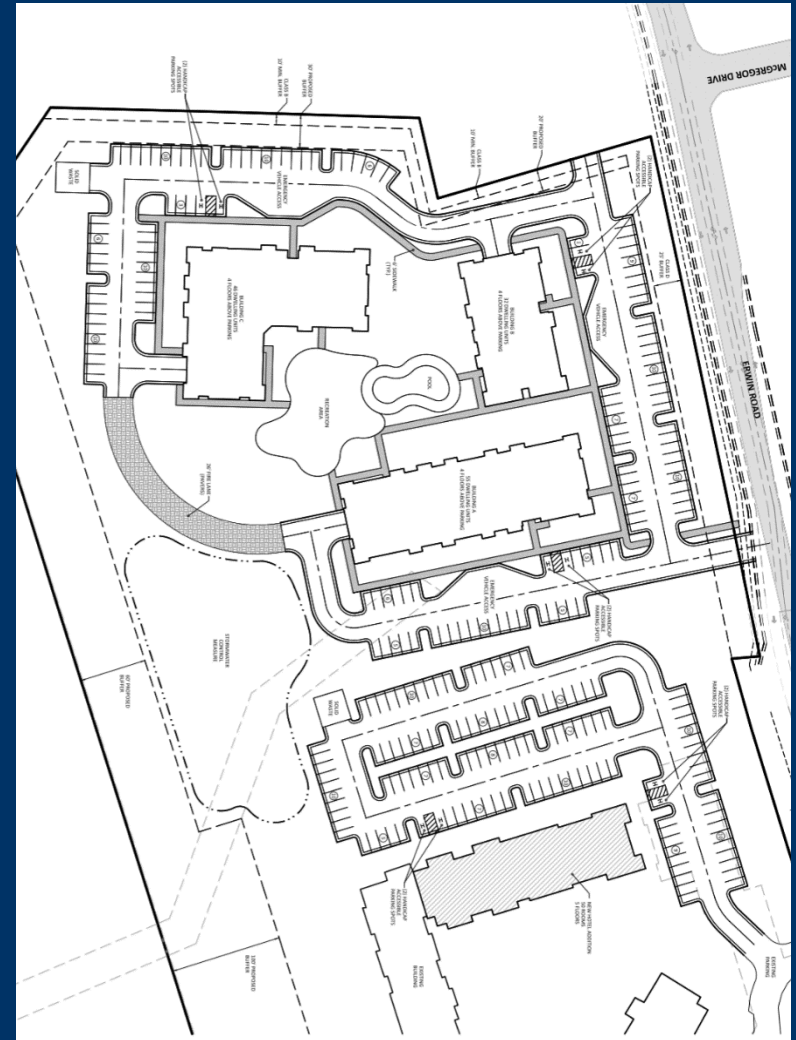
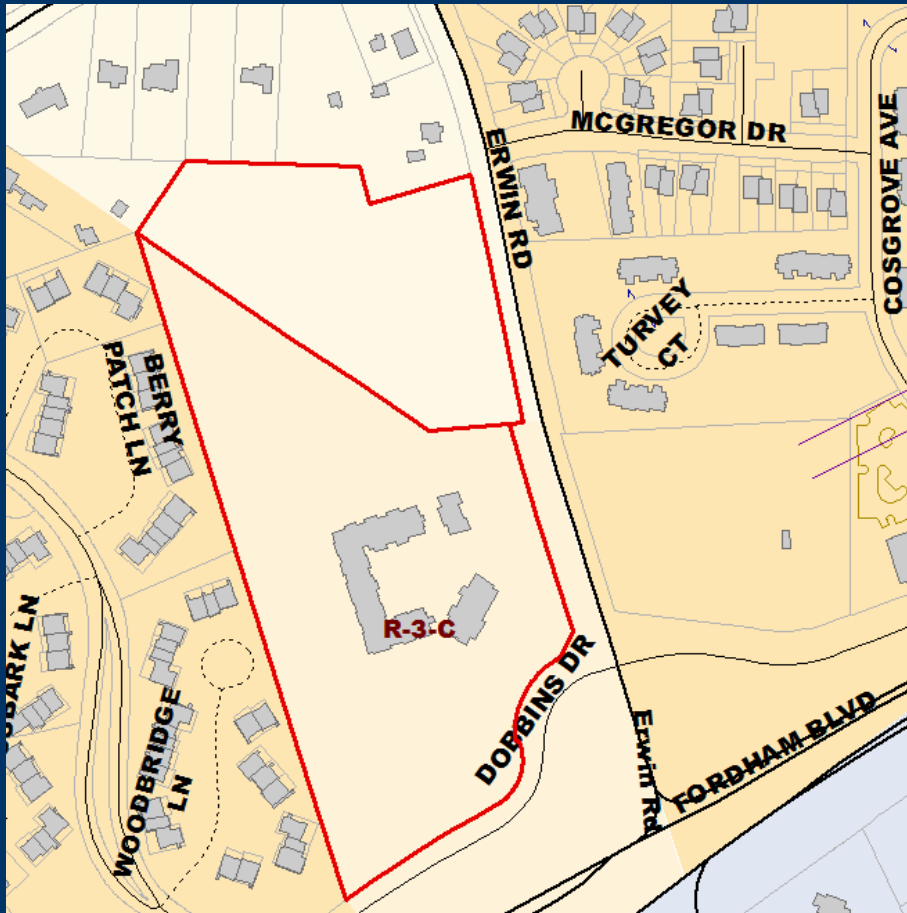


TOWN OF CHAPEL HILL

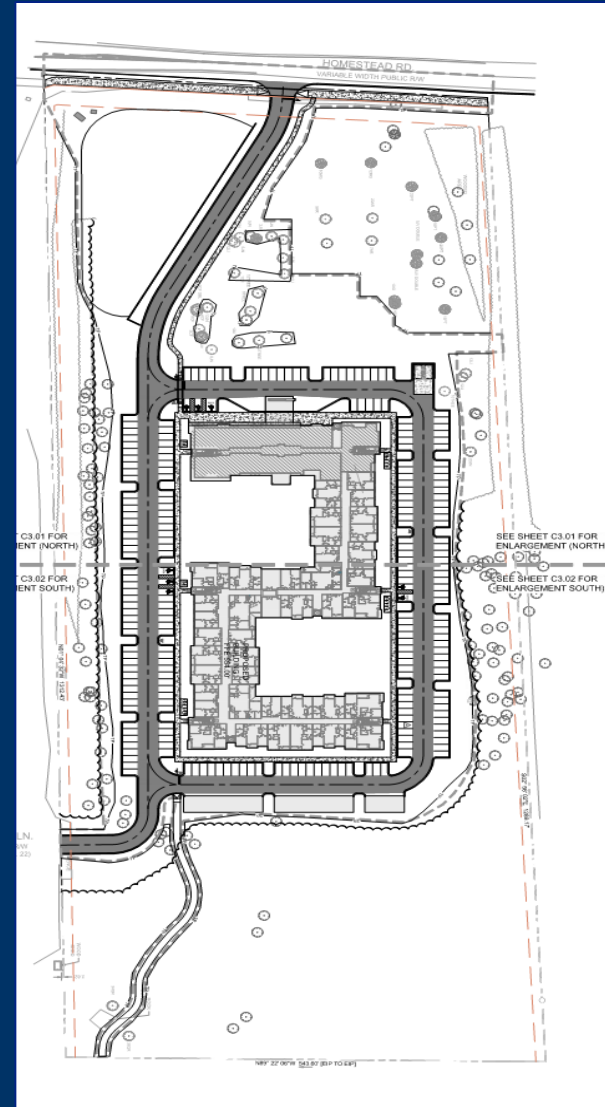
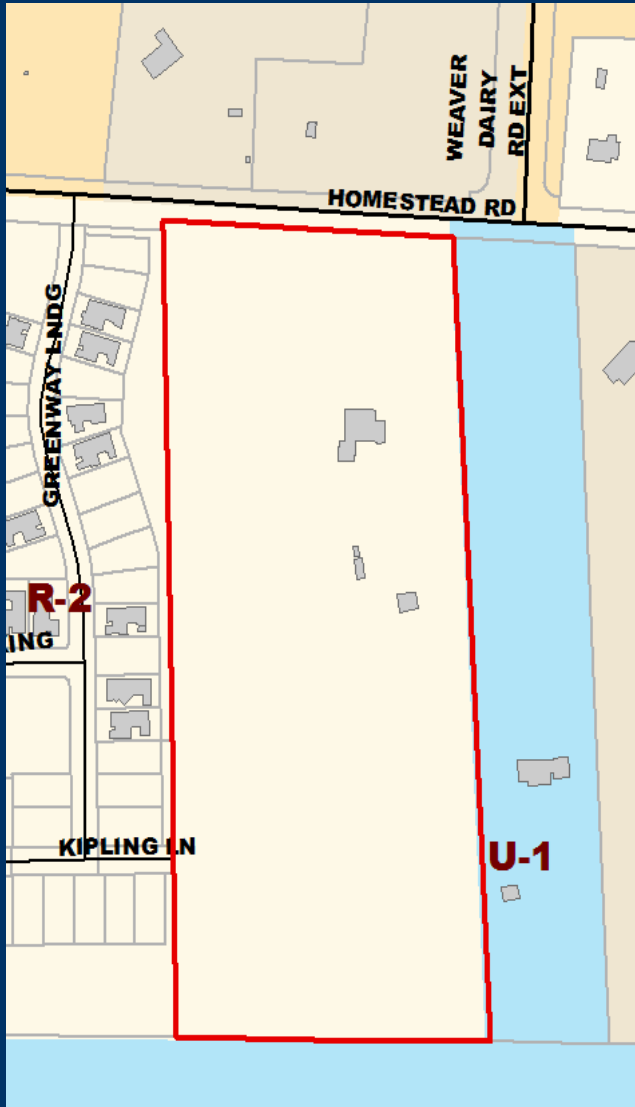
End of Summer Edition



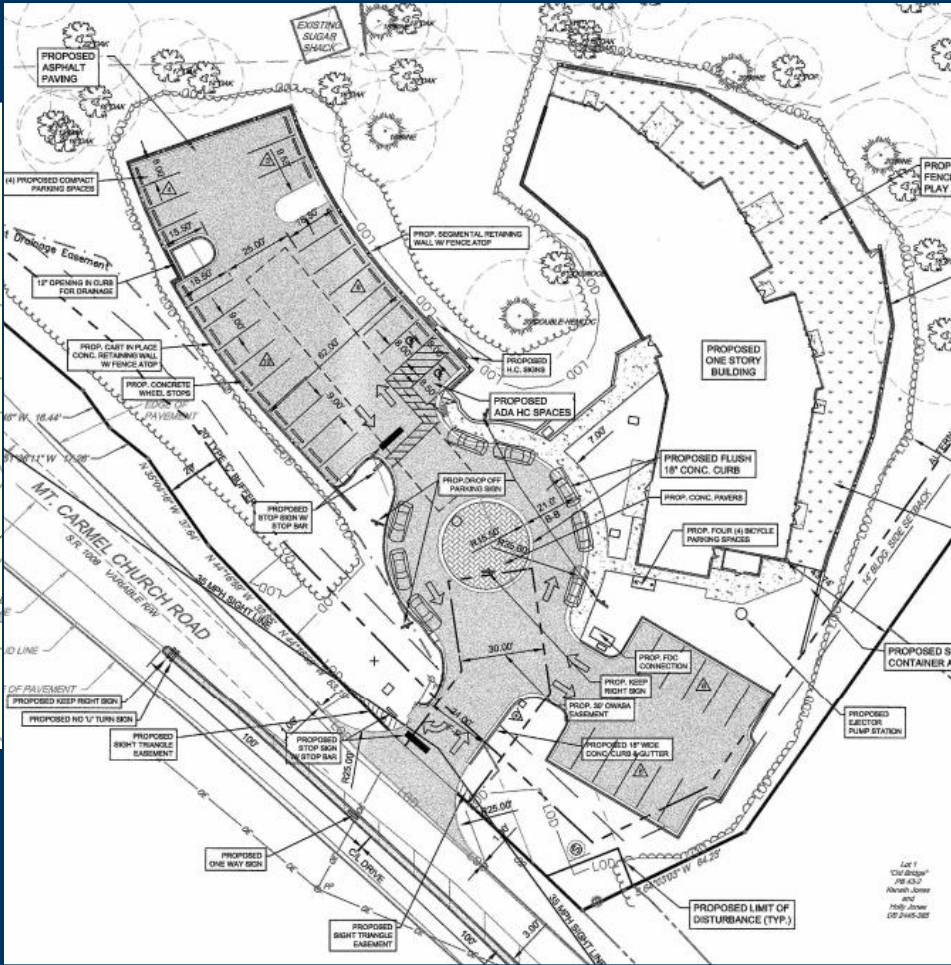
Erwin Road Apartments/ Residence Inn



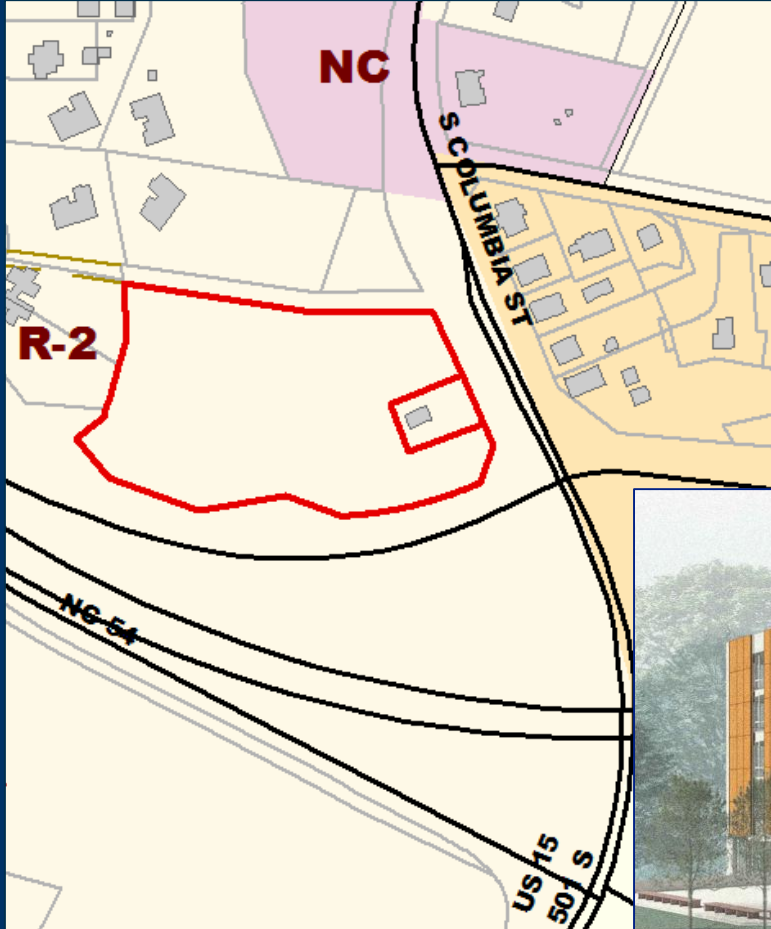
Active Adult Retirement Apartments



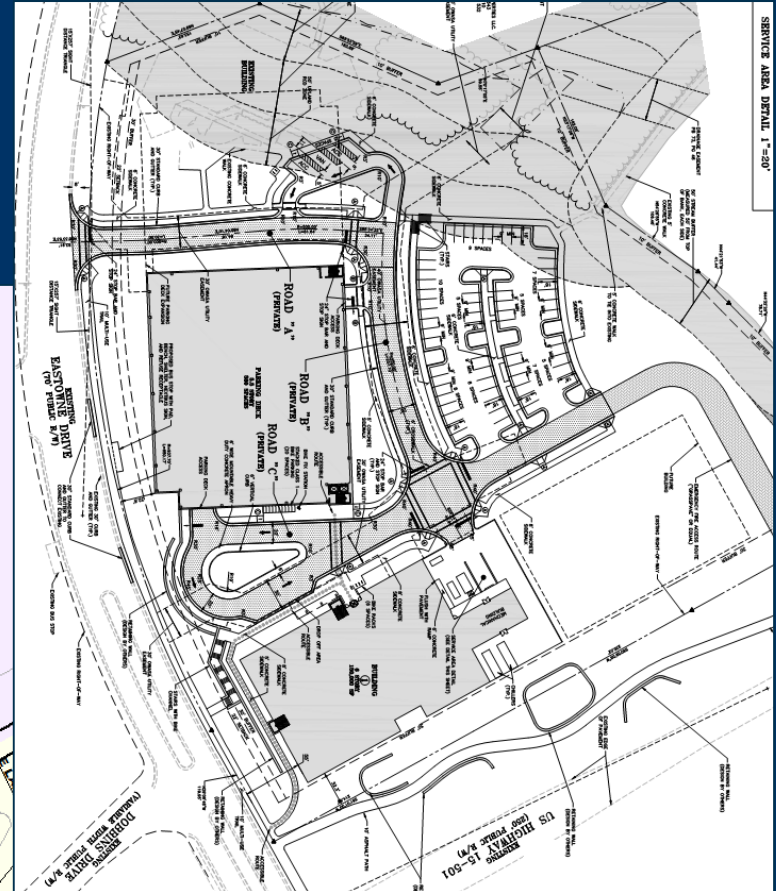
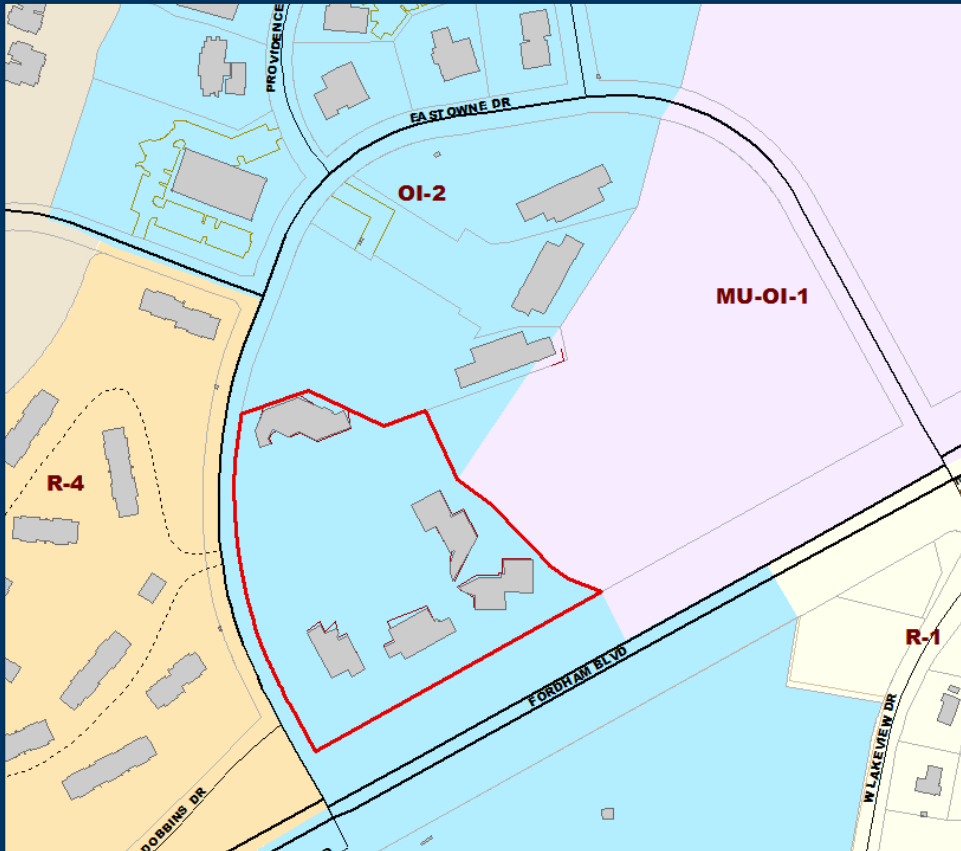
Chapel Hill Cooperative Preschool



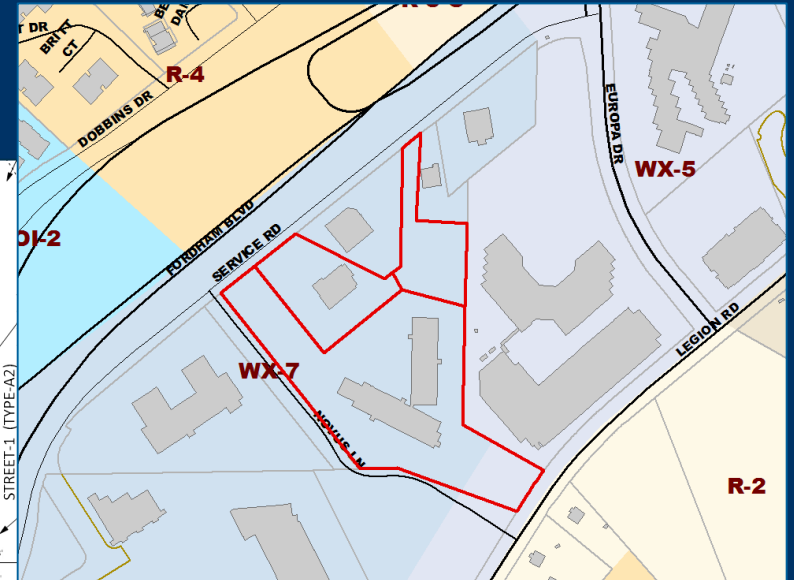
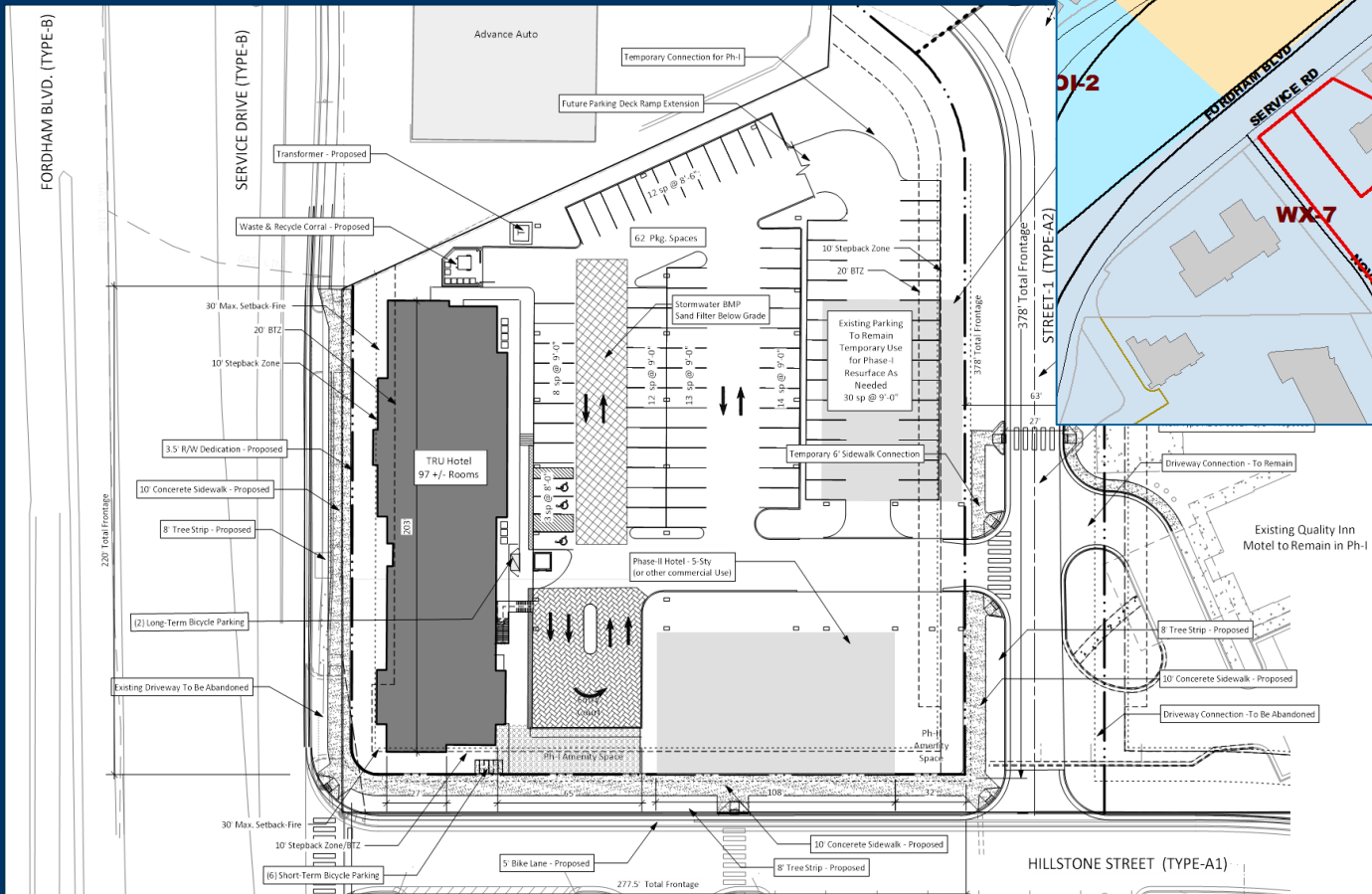
Columbia St Annex Mixed Use



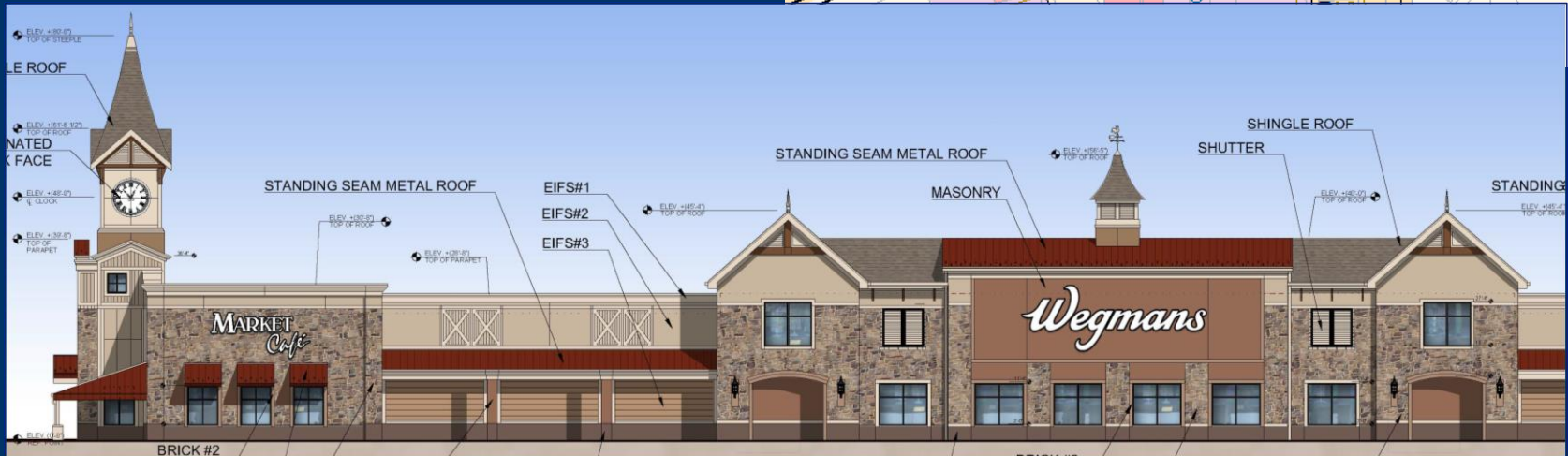
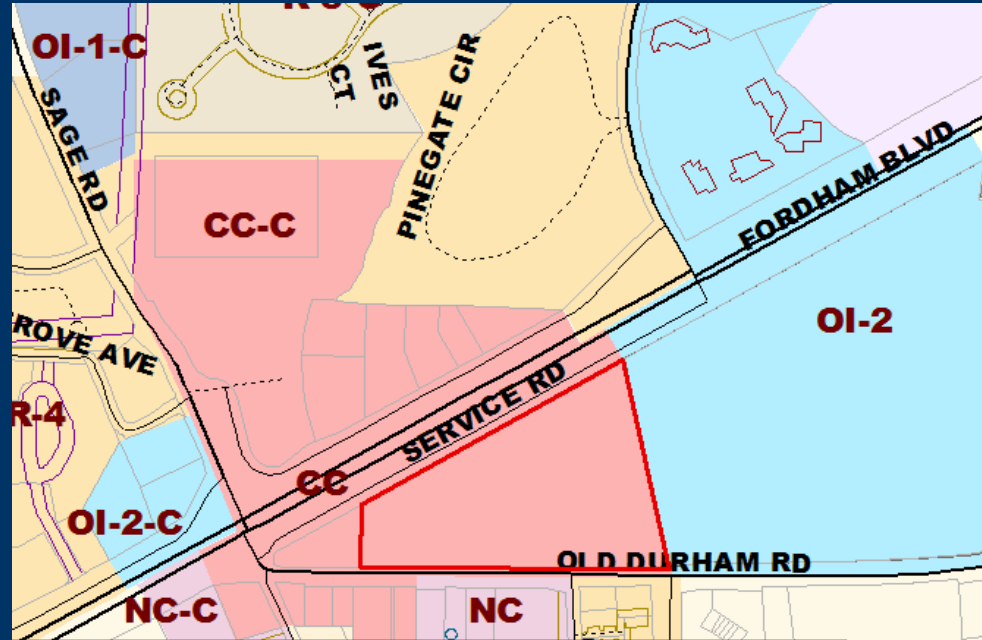
Eastowne UNC Healthcare



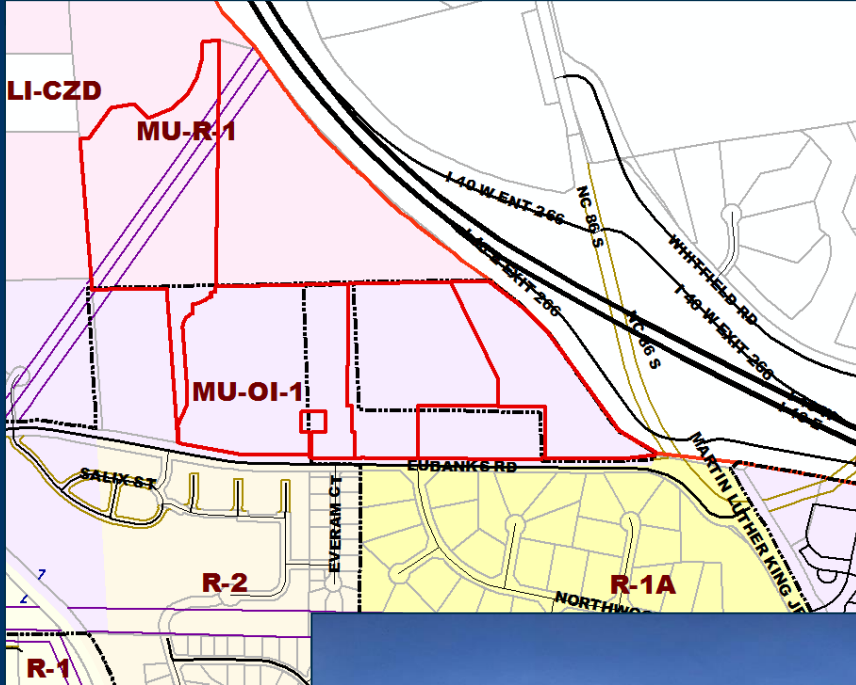
Tarheel Lodging Redevelopment



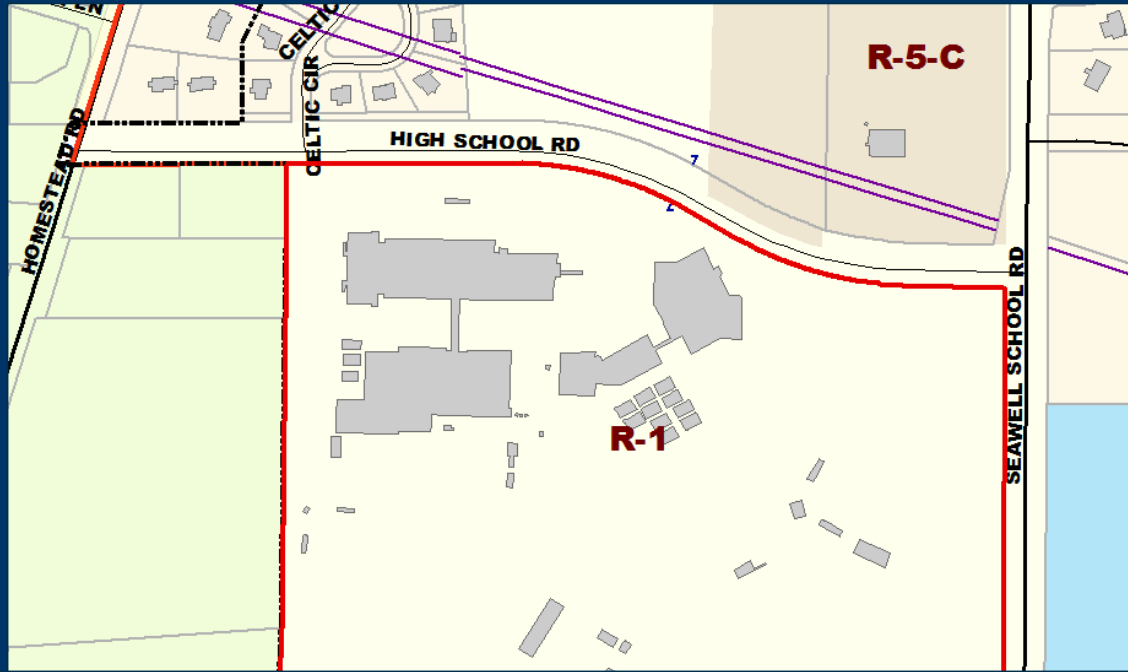
Wegmans Food Market



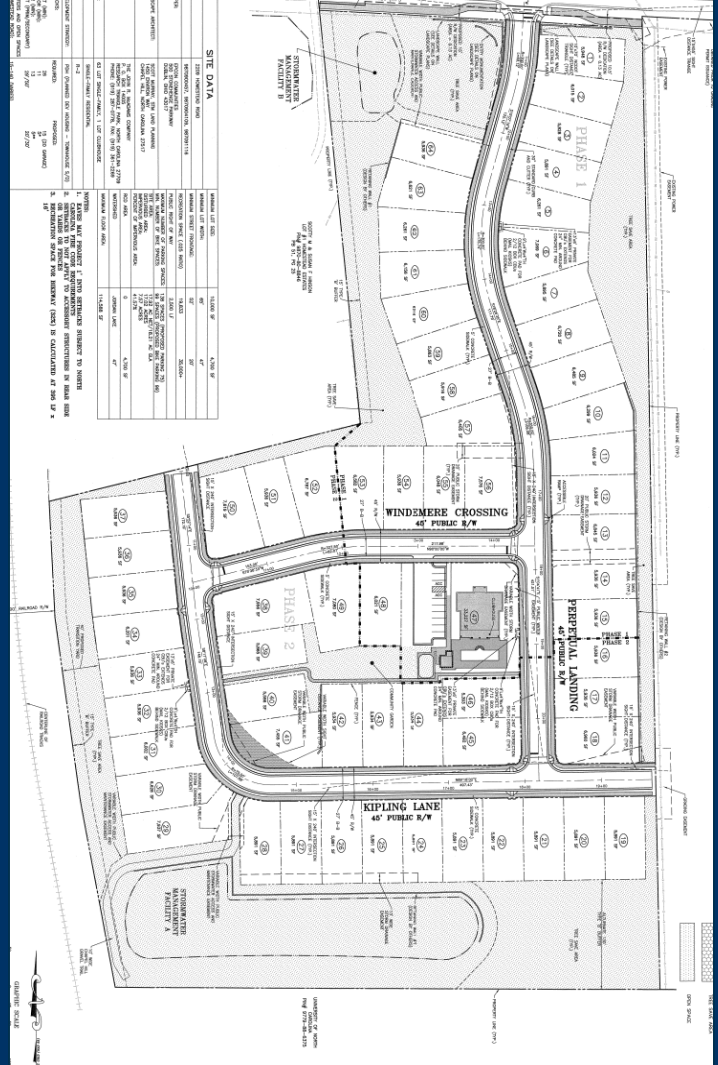
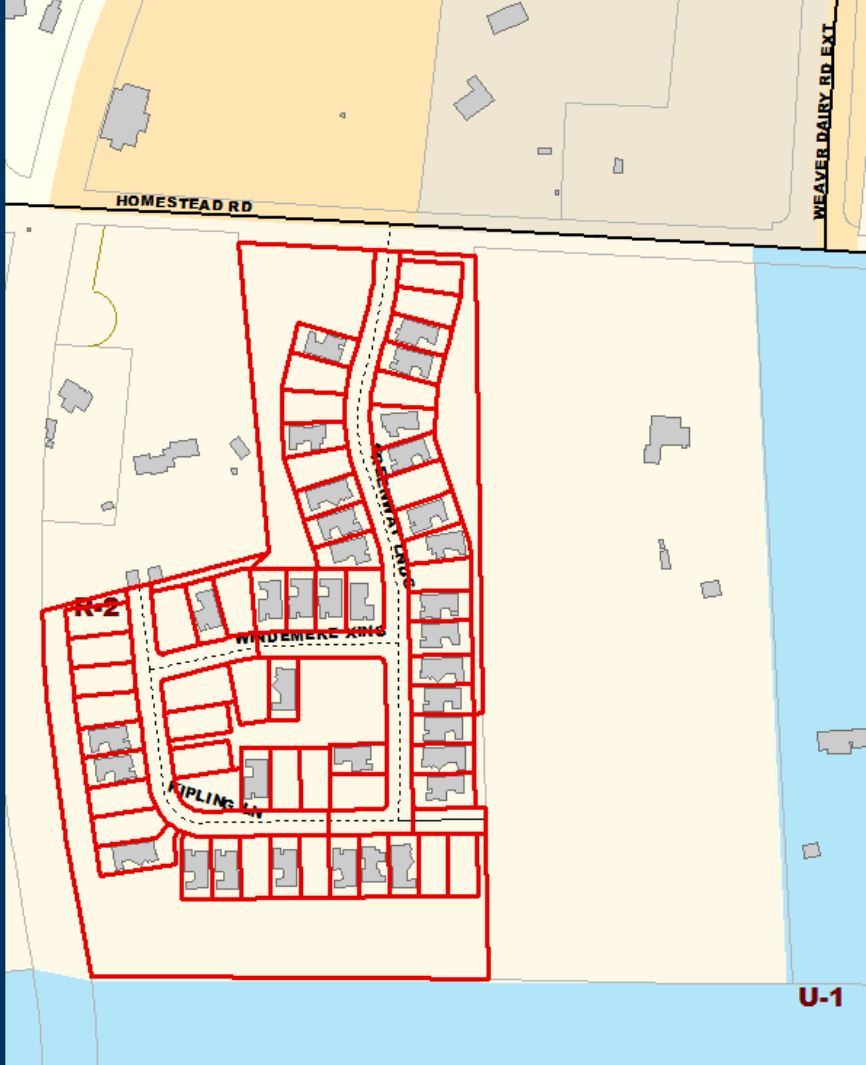
Carraway Village



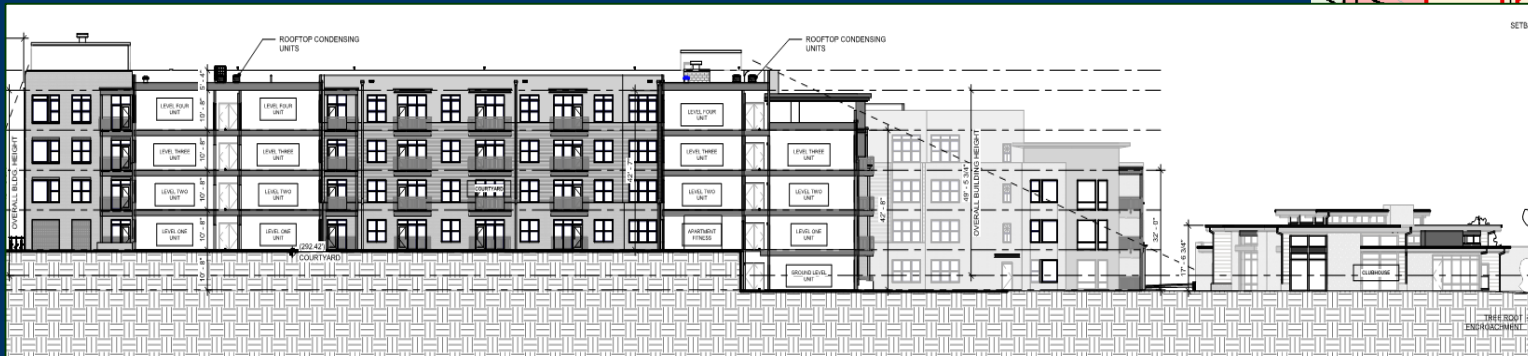
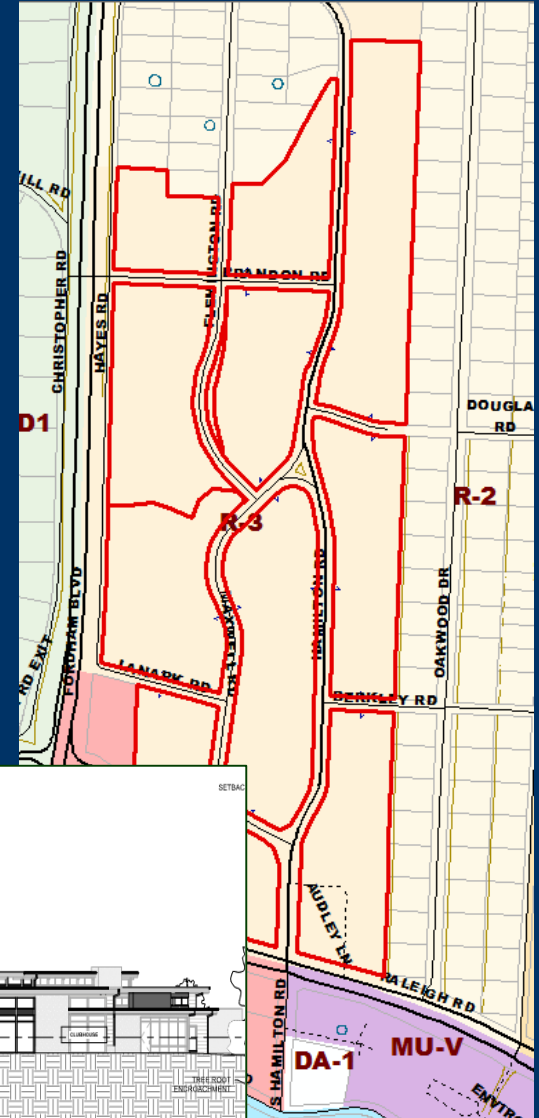
Chapel Hill High School



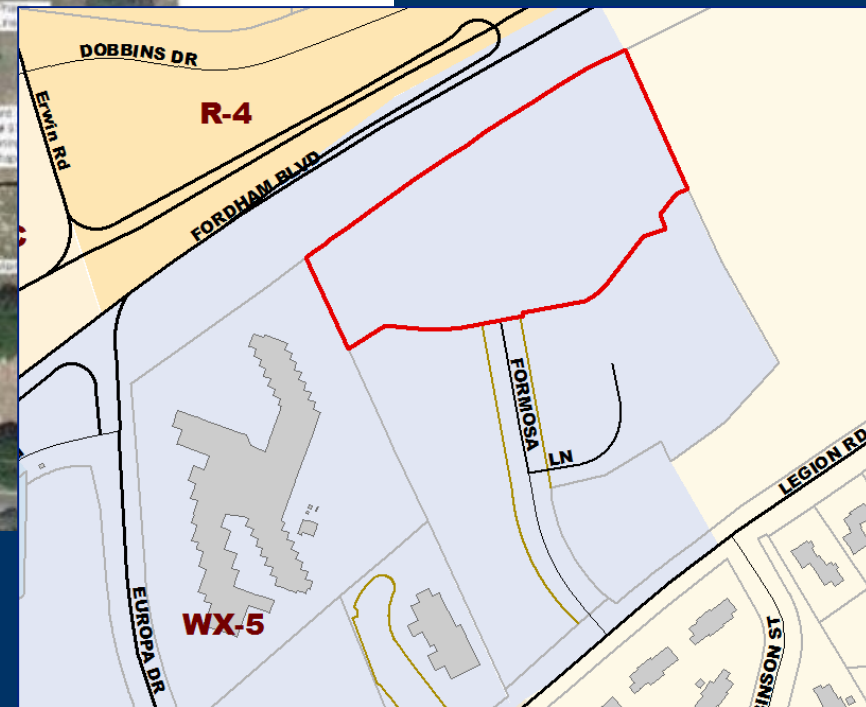
Courtyards of Homestead



Glen Lennox Phase 1



Greenfield Commons (DHIC Phase 2)



Question & Answer



TOWN OF CHAPEL HILL