

KIDZU CHILDREN'S MUSEUM

a catalyst for growth, innovation & learning at Chapel Hill's Southern Gateway



BIOGRAPHIES



John Felton, AIA, NCARB

Senior Principal | Director of Design
Cline Design

John has over 32 years of experience including 24 years with Cline Design Associates. John has a passion for designing places that bring people together and build a sense of community. As Director of Design, John Felton plays a central role in the design of many of the firm's mixed-use, residential, retail and urban design projects. He works with clients at the earliest stages of design, determining visions and goals for architectural character, and maintains an active role overseeing and directing the design team in order to ensure integrity of design throughout each phase of the process.



Brad Burns, AIA, LEED AP BD+C

Associate | Design Director
Gensler

Brad is interested in how architecture can improve our cities and how the profession can engage communities in meaningful ways. In 17 years of practice, Brad has provided leadership for academic, cultural, government, commercial and residential clients, with a focus on design excellence and technical rigor. As a design director at Gensler, he establishes projects' creative foundations based on the strategic goals of his clients and ensures overall design quality through all phases of design and construction. Prior to joining Gensler, Brad worked in New York City for ten years where he gained a breadth of experience in design, management and technical responsibility for projects ranging in use, complexity and scale while always maintaining a high standard of design.



AGENDA



01 History & Context

02 Growth & Future

03 Kidzu as Catalyst



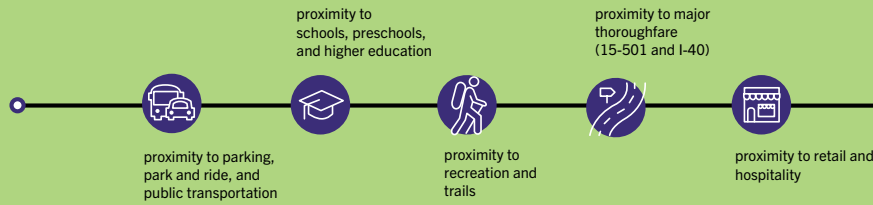
HISTORY & CONTEXT



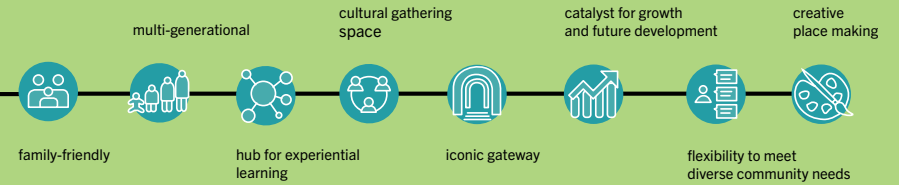
SOUTHERN VILLAGE INITIAL CONCEPT



ESSENTIAL AMENITIES OFFERED BY SOUTHERN CHAPEL HILL



ESSENTIAL ATTRIBUTES OFFERED BY KIDZU



mission

With focus on STEM, the arts, health + wellness and emerging literacy, Kidzu inspires children and the adults in their lives to learn through creative and purposeful play.

core values

creativity
collaboration
community,
sustainability
play as lifelong learning
research + best practices

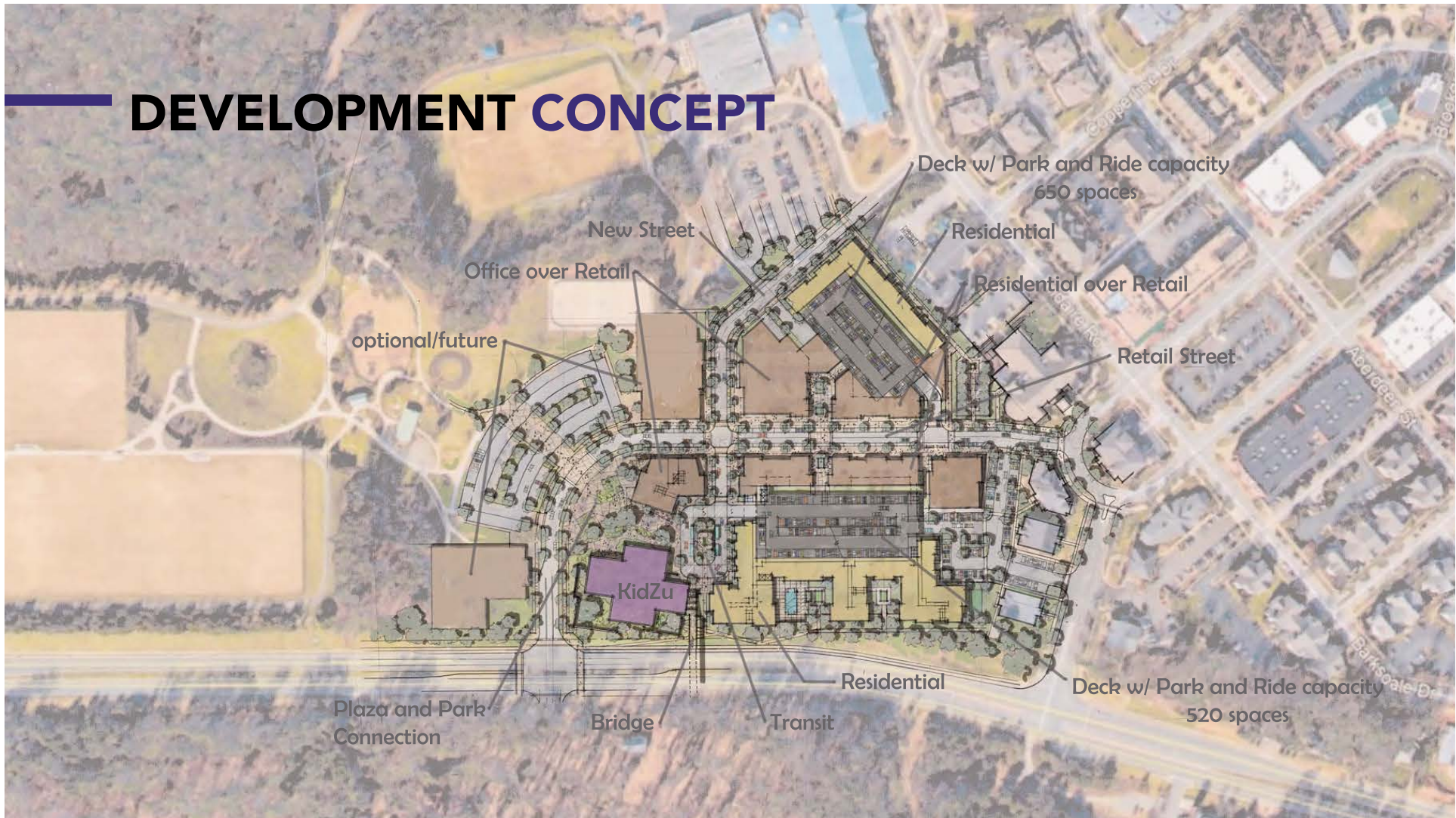
vision

To be an innovator in informal learning and a model of excellence as a "community-centered" children's museum—that is to serve, celebrate and reflect the uniqueness of our region through developmentally appropriate exhibits and programs for children and the adults who care for them.

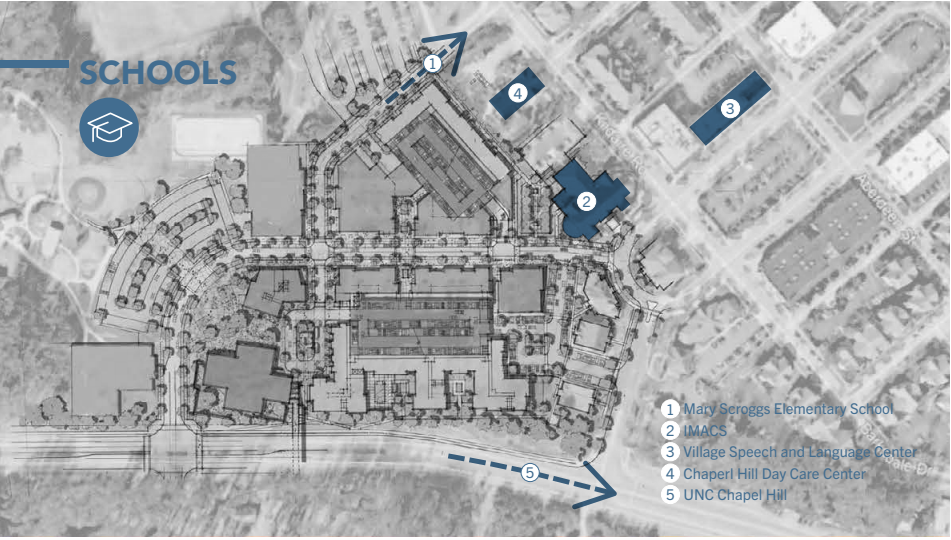
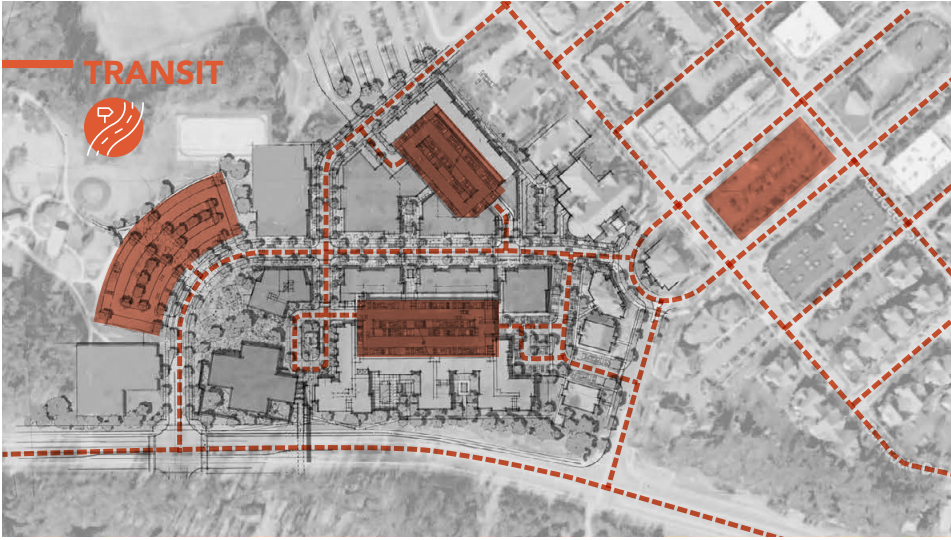
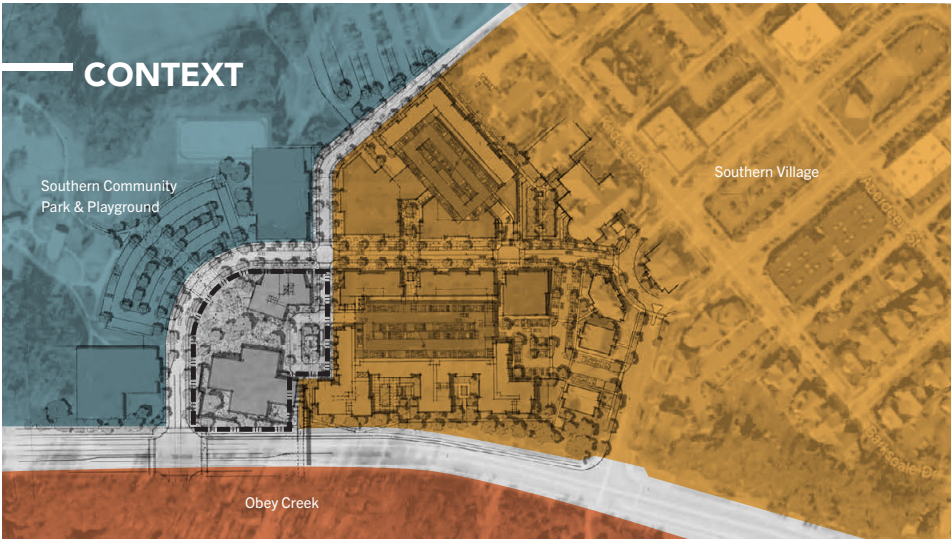
SHARED PRIORITIES AND GUIDING PRINCIPLES

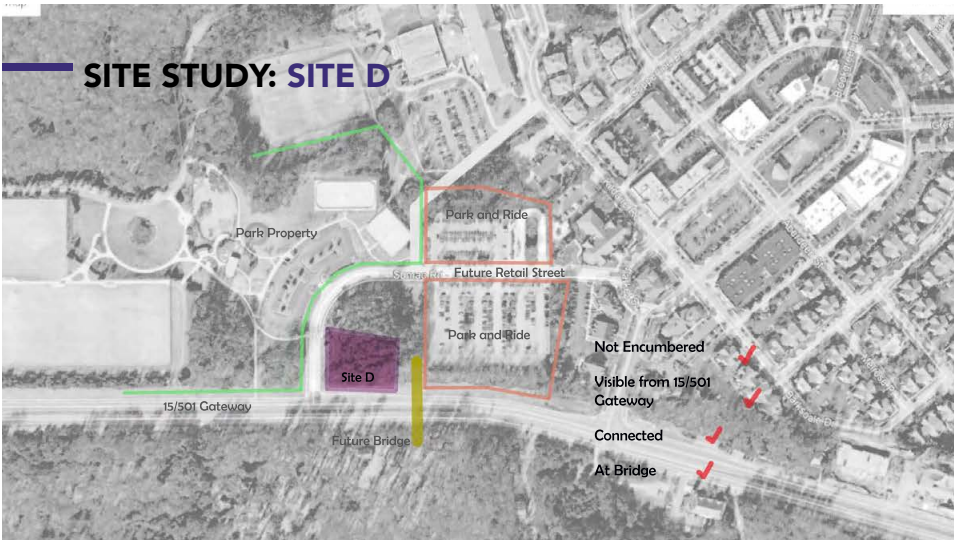
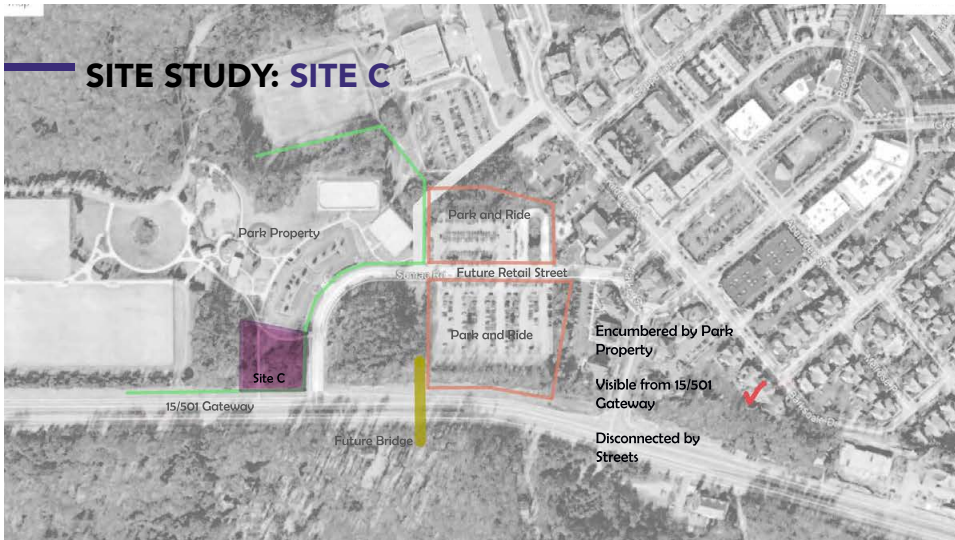
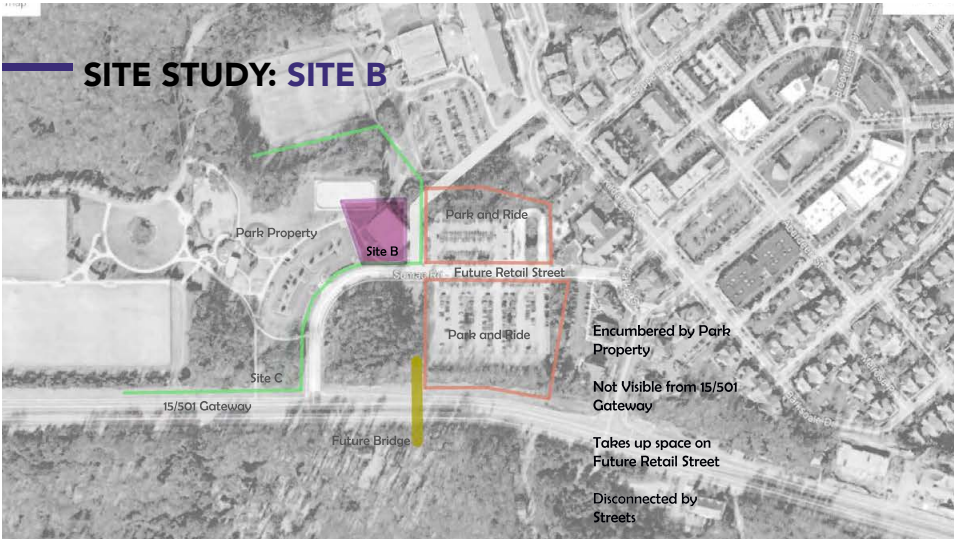
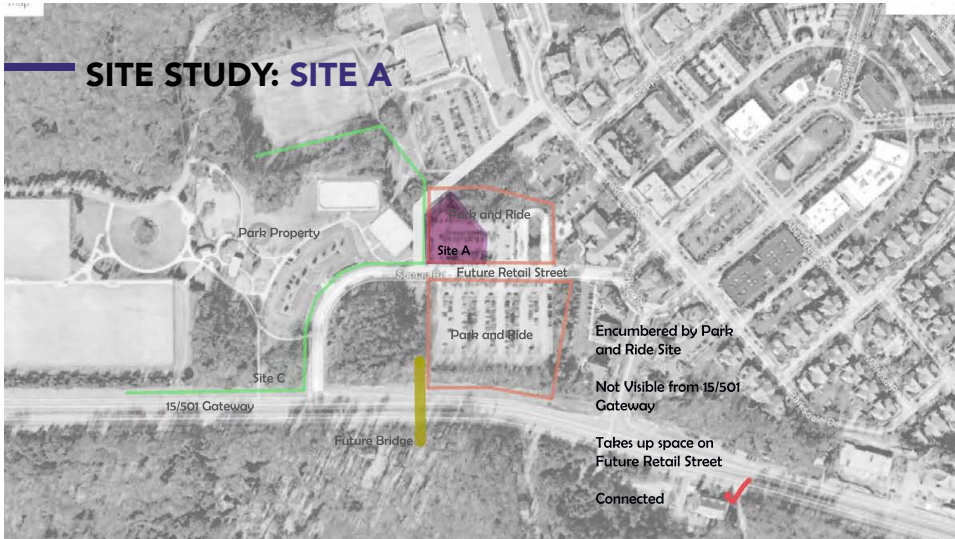


DEVELOPMENT CONCEPT

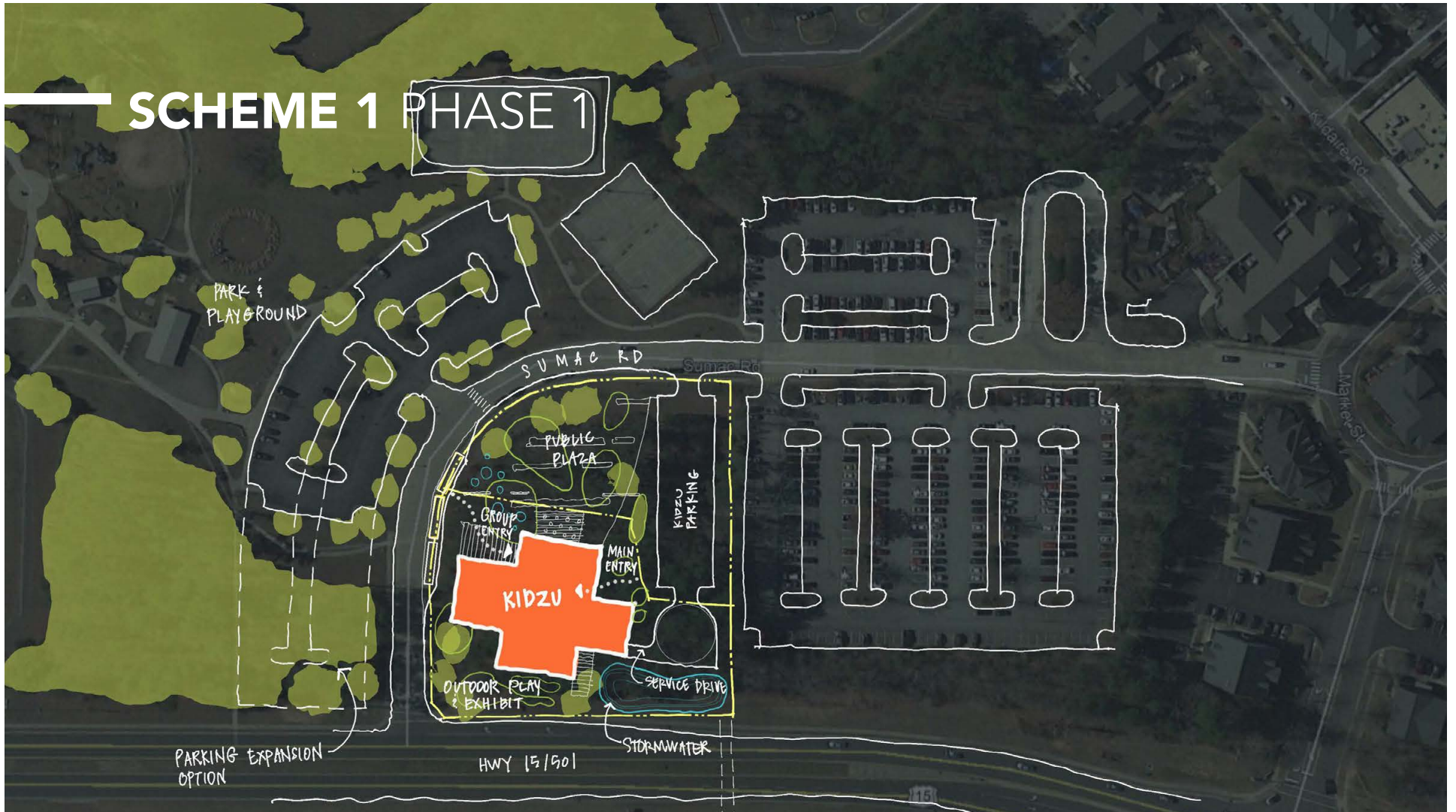


GROWTH & FUTURE





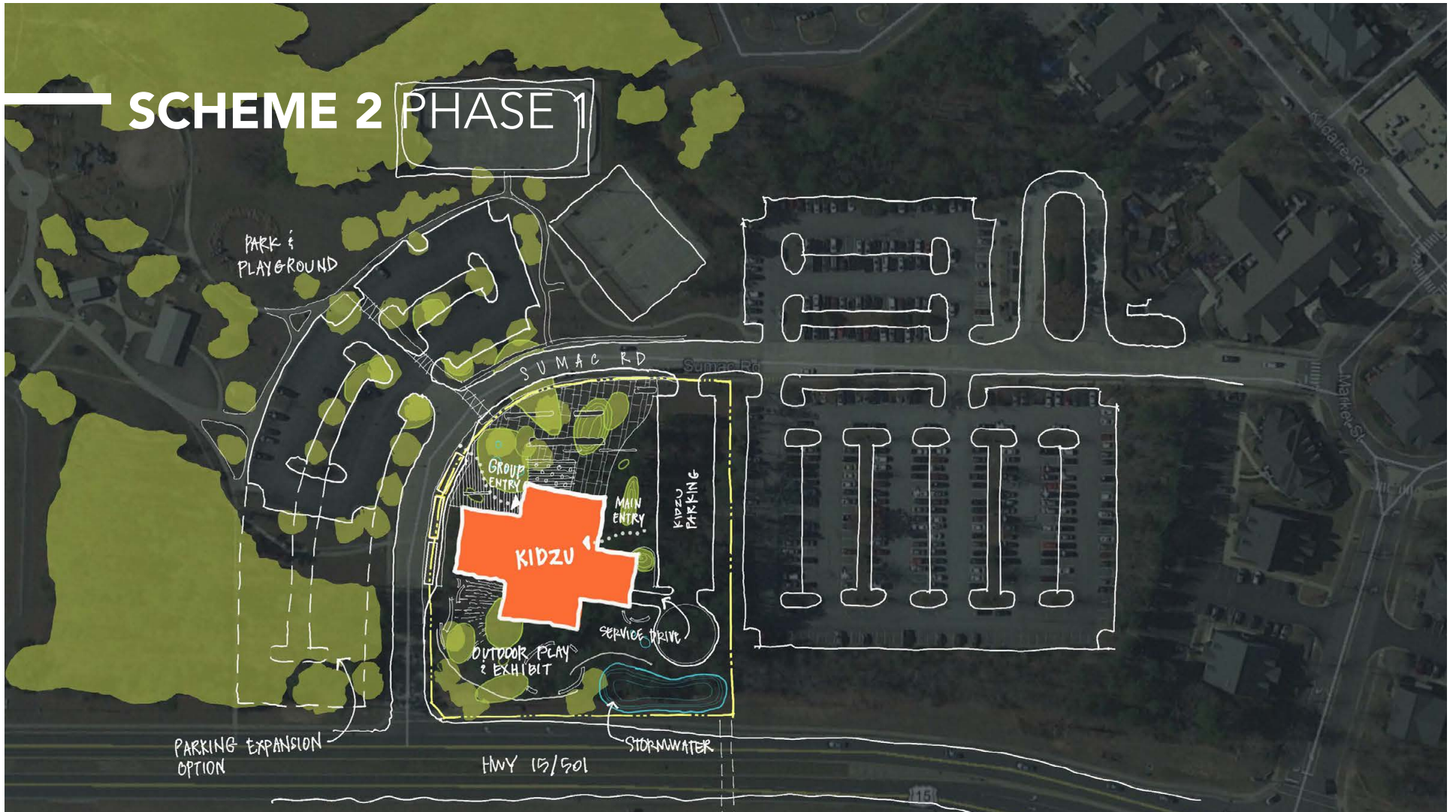
KIDZU AS CATALYST



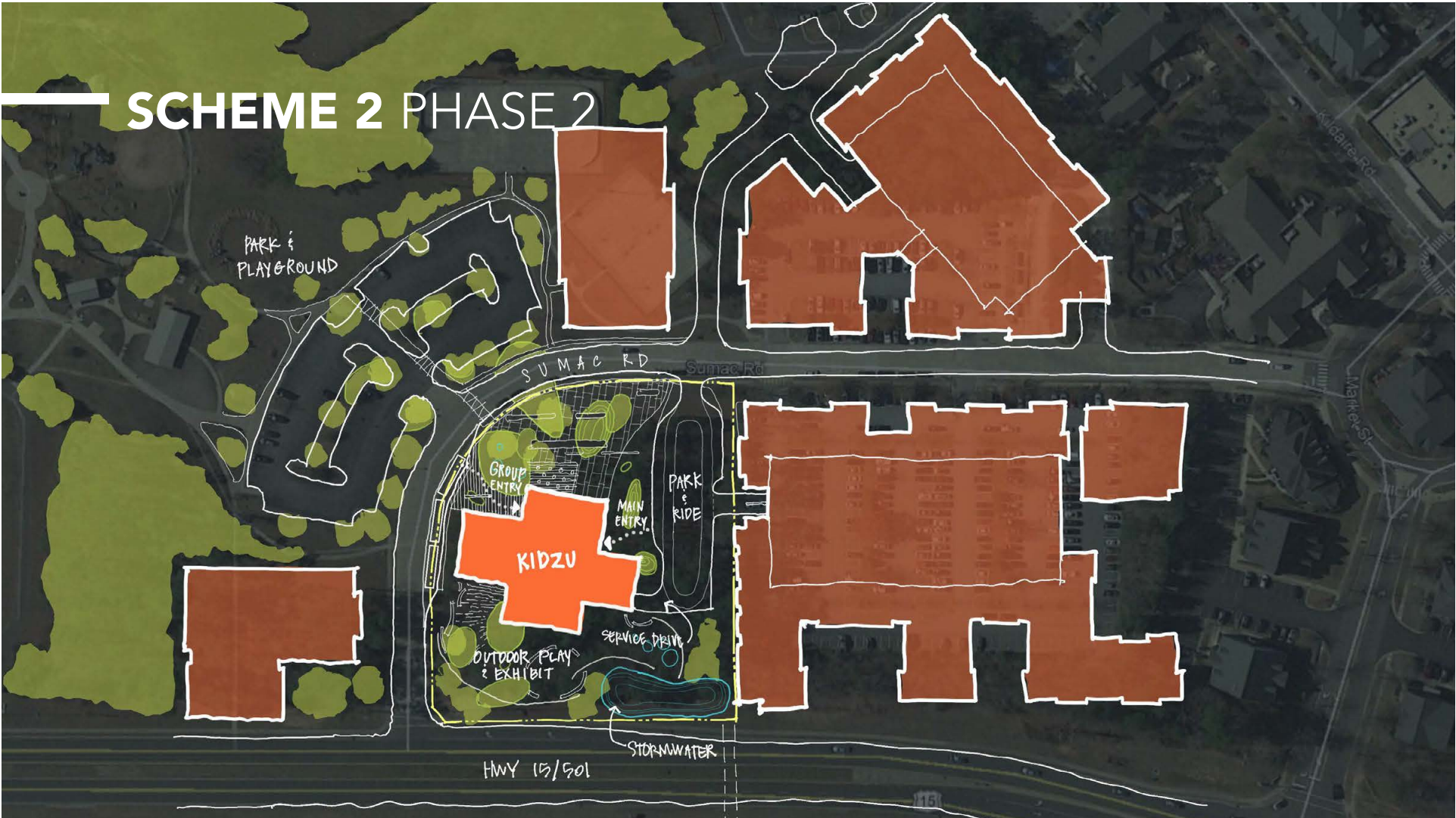
SCHEME 1 PHASE 2



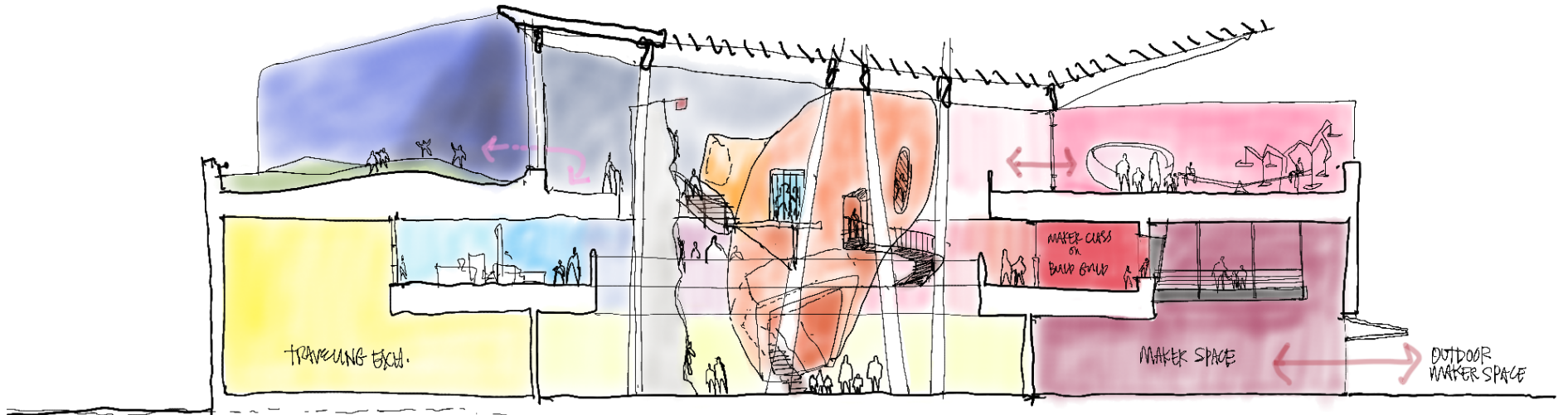
KIDZU AS CATALYST



SCHEME 2 PHASE 2



KIDZU SECTION SKETCH





Thank you!

Photographs by Barbara Tyroler, Kidzu Children's Museum