

# DOWNTOWN WORK PLAN UPDATE

---

COUNCIL COMMITTEE ON ECONOMIC SUSTAINABILITY

MARCH 2019

A solid green horizontal bar at the bottom of the slide.

## 2016

---

- **Short Term/tactical:** Street performers, bookstores, bus stops, parking, smell, signage, bury utilities, bathrooms, ADA accessibility, Northside “edge”, sidewalk dining, pan-handling, smoking, lighting
- **Long Term:** student rental, stormwater, preserving character, residential needs, office needs, transportation and mobility network needs

## 2020

### Results

- Catalytic investments
- Stakeholder relationships
- Internal coordination
- Development guidance for Northside “edge”

# TOWN ROLE....

## Leading

- ✓ Land use planning
- ✓ Infrastructure
- ✓ Safety

## Collaborating

- ✓ Community arts & culture
  - ✓ Open space



In 2018 alone...

- 105 items identified to be repaired by 4 agencies during 3 walking audits
- 72 complete, 14 identified, for ongoing efforts, 19 still underway



**INFRASTRUCTURE**



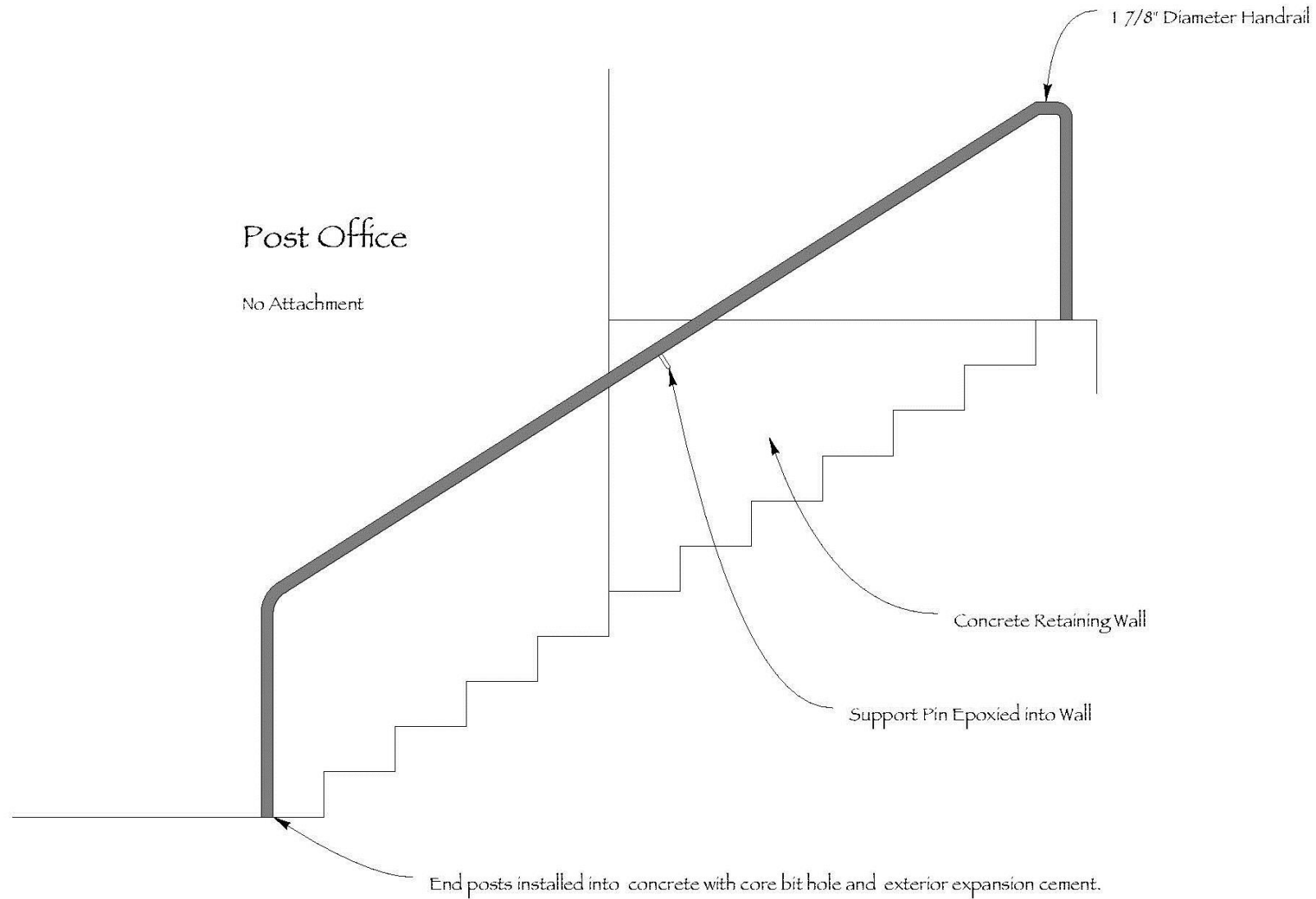
**INFRASTRUCTURE**



**INFRASTRUCTURE**

# Post Office @ Franklin Street - Rear Railings to Henderson ST

Railing placed along left side as walking up. Not attachment to Post office building



In 2018 alone...

- 285 Town-managed parking spaces added
- 60 meters installed
- Lots to Love Campaign and Downtown Ambassadors launched



 **Park On The Hill** YOUR GUIDE TO PARKING IN CHAPEL HILL.



WAYS *to* PARK

THINGS *to* KNOW

GET *the* APP

LOTS

*to*



**INFRASTRUCTURE**



**D-Series Size 1 LED Wall Luminaire**

**Specifications:**

- Model: D-100
- Height: 15.0"
- Width: 4.0"
- Weight: 1.5 lbs

**Notes:**

1. This luminaire is designed for use in a variety of applications including outdoor lighting, parking lots, and walkways. It is designed to provide uniform, glare-free illumination.

2. The luminaire is designed to be mounted to a brick wall at brick joints. Galvanized 1/2" dia conduit for wiring.

**Material Schedule**

Item	Description	Quantity	Unit
1	LED Wall Luminaire (D-Series Size 1)	3	Each
2	Galvanized 1/2" dia conduit	3	Linear Feet
3	Brick Wall Mounting	3	Locations

**LED Wall Luminaire Details**

Mount to brick wall at brick joints. Galvanized 1/2" dia conduit for wiring.

**Can Light in Arch**

**Specifications:**

- Model: CORE 300 SX
- Height: 15.0"
- Width: 4.0"
- Weight: 1.5 lbs

**Notes:**

1. This luminaire is designed for use in a variety of applications including outdoor lighting, parking lots, and walkways. It is designed to provide uniform, glare-free illumination.

2. The luminaire is designed to be mounted to a brick wall at brick joints. Galvanized 1/2" dia conduit for wiring.

**Lighting Schedule**

Item	Description	Quantity	Unit
1	Can Light in Arch (CORE 300 SX)	5	Each
2	Galvanized 1/2" dia conduit	5	Linear Feet
3	Brick Wall Mounting	5	Locations

**SCOPE OF WORK by ELECTRICAL CONTRACTOR**

**POST OFFICE and VARSITY ALLEY**

**Description of physical changes proposed:**

**Entry Arch Lights:** LED can lights will be installed in the bottom face of the arch for nighttime illumination of the embedded brass letters in the pavement. The LED lights will be installed by the Electrical Contractor, however the metal artist will provide house for the fixture and General Contractor will assist with installing conduit under paved surfaces and coordinate with electrical contractor on related matters.

**General:** Electrical Contractor to provide metal (galvanized) conduit to the locations from electrical services to site. Coordinate with General Contractor for locating the galvanize conduit.

**Varsity Alley only**

**Description of physical changes proposed:** Six LED Wall Mounted Light Luminaires: Lithonia D-Series Size 1 Wall mounted luminaire LED 3000K

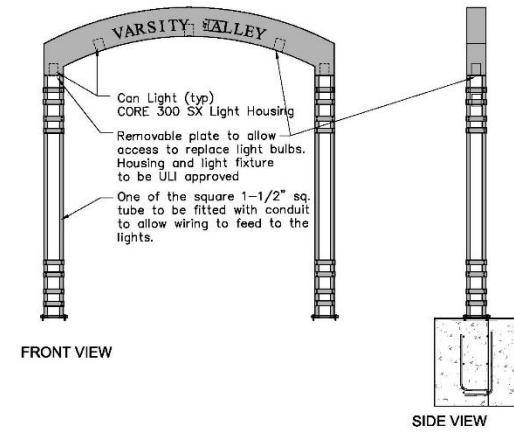
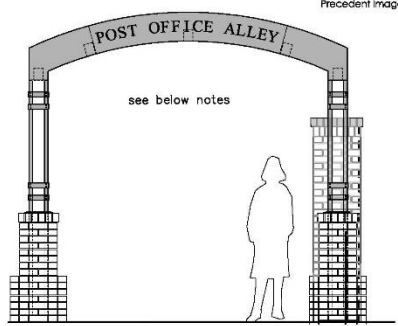
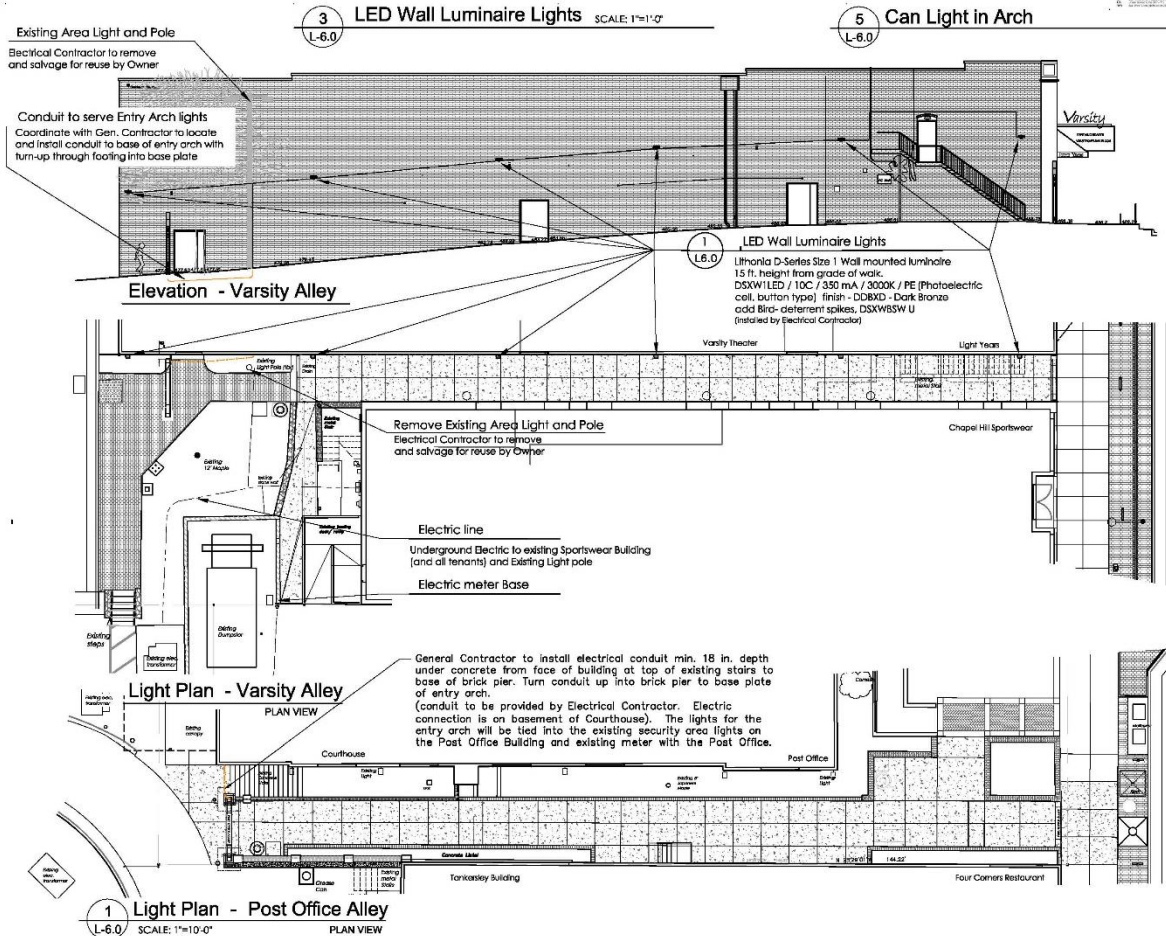
**Demolition:** Removal of existing wood pole and pole mounted double lights

**SWANSON AND ASSOCIATES P.A.**  
LANDSCAPE ARCHITECT

301 E. Court Street  
Chapel Hill, NC 27514  
Tel: 919.952.9000  
Fax: 919.952.1200  
www.swansonpa.com

**North Carolina Seal:** 461  
D. A. SWANSON  
October 05, 2018

**North Carolina Seal:** C-16B  
October 05, 2018



**POST OFFICE ALLEY**

Town of Chapel Hill  
179 E. Franklin Street  
Chapel Hill, NC

**Varsity Alley**

Town of Chapel Hill  
119 E. Franklin Street  
Chapel Hill, NC

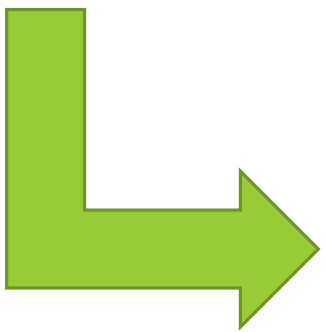
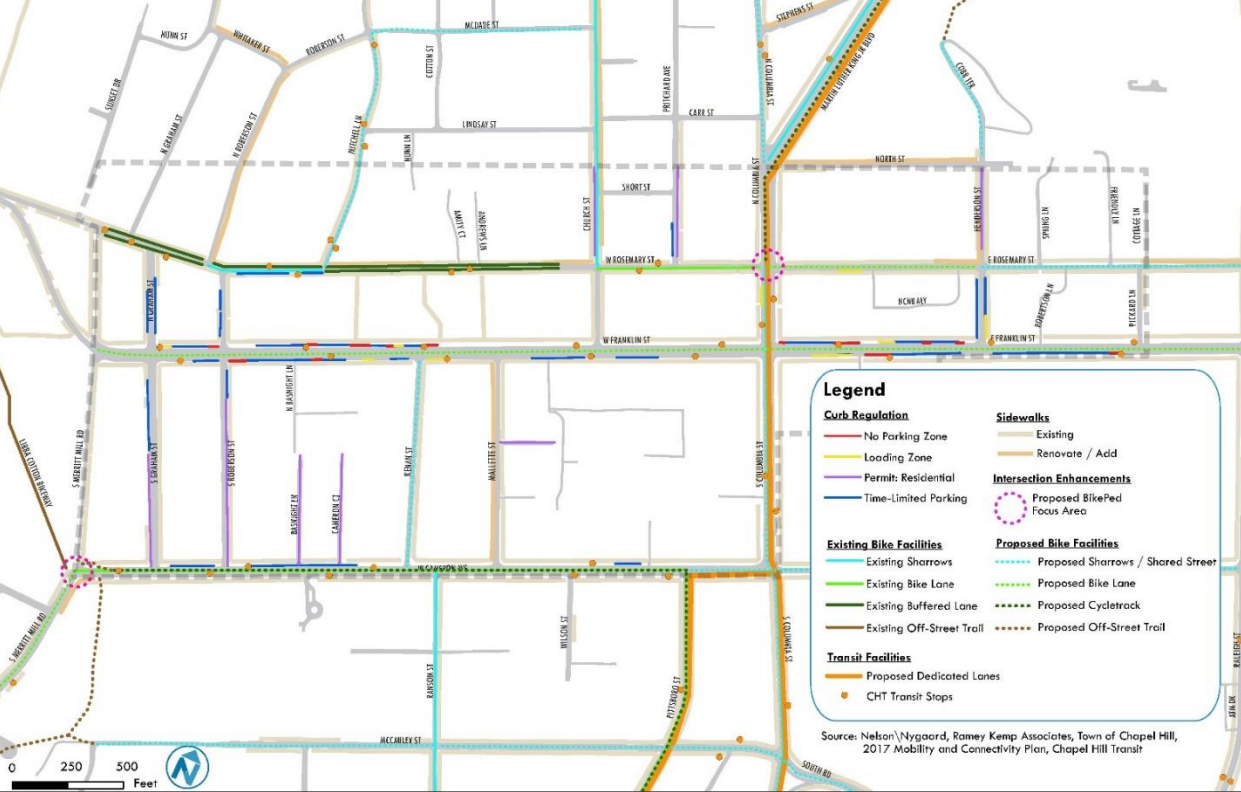
revisions

date October 05, 2018

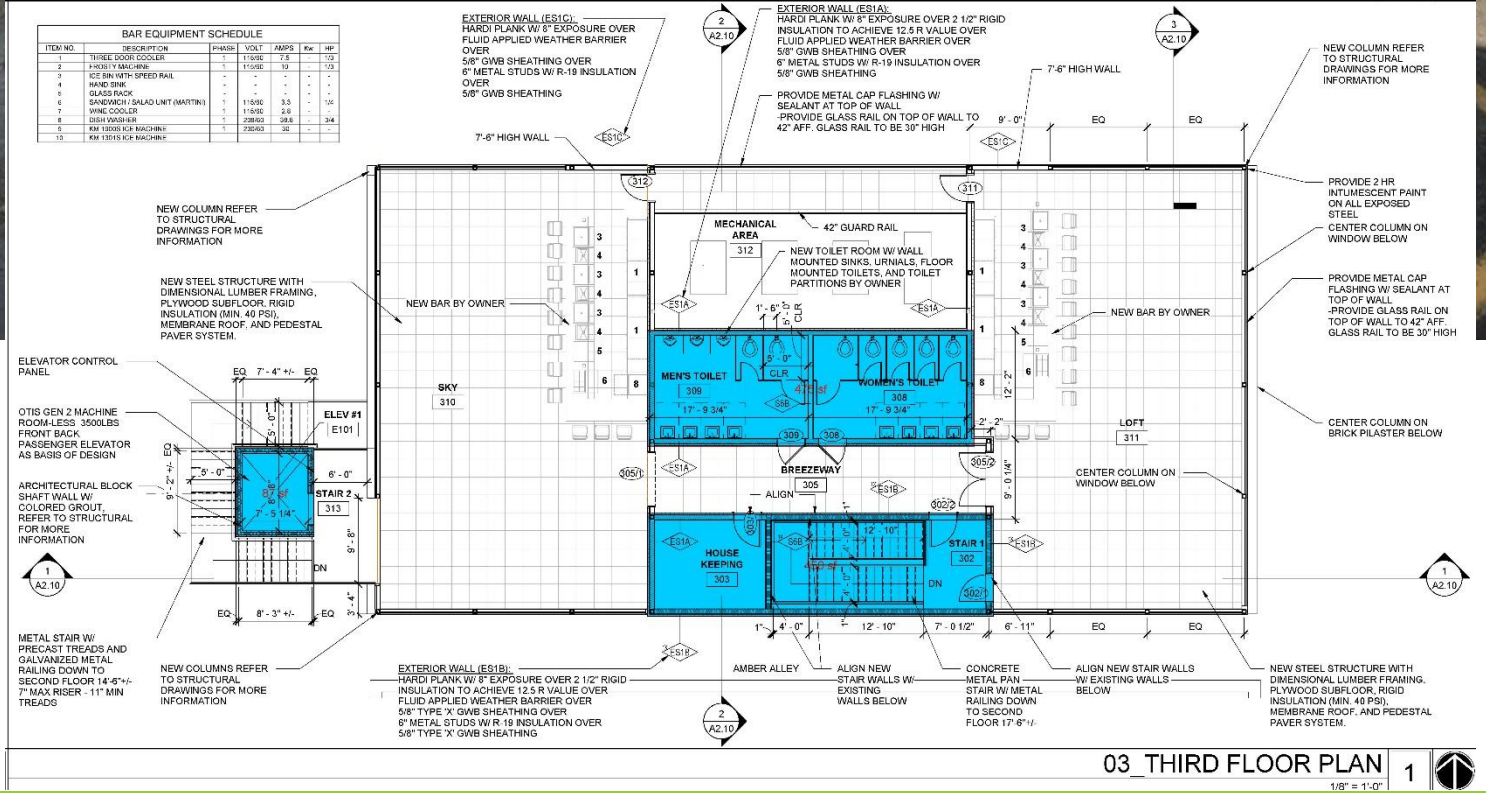
Alley Improvements Plan

Sheet Name Lighting Plan and Details

Sheet Number L6.0



**LONG RANGE PLANNING**





**SAFETY**



**OPEN SPACE**



**OPEN SPACE**

# COMING SOON...

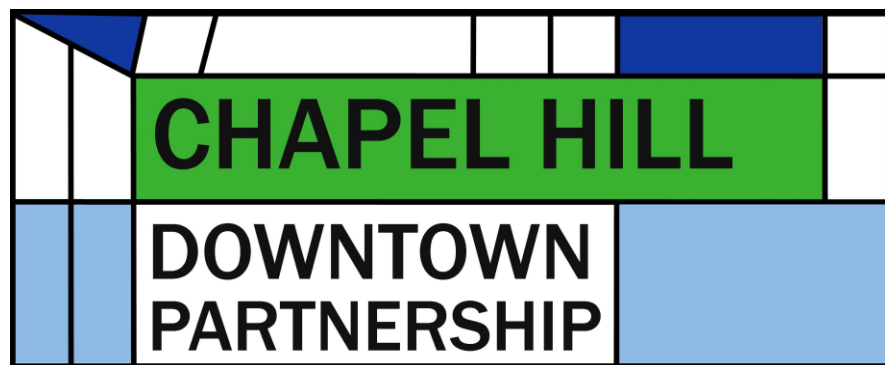
WORK PLAN CATEGORY	WORK PLAN INITIATIVE	PROJECTS IN PROGRESS	PROJECT STATUS
Development Patterns	West Rosemary Street Development Guide: Design guidelines for an important intersection of Downtown and the Northside Neighborhood.	<ol style="list-style-type: none"> <li><a href="#">1. West Rosemary Street Development Guide</a></li> <li><a href="#">2. Amity Station Development Agreement</a></li> </ol>	<ol style="list-style-type: none"> <li>Execution</li> <li>Planning</li> </ol>
	Work collaboratively with the University to continuously assess future student housing development both on and off campus to prioritize student safety and protect the historic neighborhoods that surround Downtown.	<ol style="list-style-type: none"> <li><a href="#">1. Land Use and Management Ordinance (LUMO) re-write</a></li> <li><a href="#">2. Future Land Use Map (FLUM) focus area</a></li> </ol>	<ol style="list-style-type: none"> <li>Planning</li> <li>Execution</li> </ol>
	Four Corners Planning: Develop a "four corners" strategy for the entire Rosemary/Columbia intersection.	<ol style="list-style-type: none"> <li><a href="#">1. Town Properties Task Force</a></li> <li><a href="#">2. Historic Town Hall Committee</a></li> <li>Future of Rosemary Columbia Parking Lot</li> </ol>	<ol style="list-style-type: none"> <li>Complete</li> <li>In progress</li> <li>Initiation</li> </ol>
	Retail study of Downtown.	FY20 Project	Initiation
	Wallace Deck: Repair the water sealant and consider adding an additional level to the deck.	Wallace Deck renovations	Planning
Access	Conduct a holistic study of Downtown parking and circulation that informs decision making about street infrastructure.	<ol style="list-style-type: none"> <li><a href="#">1. Streets and Sidewalks Study</a></li> <li>W. Franklin Street road diet</li> </ol>	<ol style="list-style-type: none"> <li>Close out</li> <li>Initiation</li> </ol>
	Engage in alternative models for parking management.	<a href="#">Parking improvements</a>	Execution
	Downtown parking marketing and education.	<a href="#">Park on the Hill</a>	Execution
	Replace Downtown parking meters.	<ol style="list-style-type: none"> <li>Parking meter installation</li> <li><a href="#">2. Parking improvements</a></li> </ol>	<ol style="list-style-type: none"> <li>Complete</li> <li>Execution</li> </ol>
	Continue to increase lighting in Downtown alleyways.	<a href="#">Alleyway improvements</a>	Planning
	Restripe Franklin and Rosemary Streets with bicycle and pedestrian improvements.	<ol style="list-style-type: none"> <li><a href="#">1. W. Rosemary Street improvements</a></li> <li><a href="#">2. Art crosswalks</a></li> <li>West end streetscape improvements</li> <li>Church and W. Rosemary Street intersection repavement</li> </ol>	<ol style="list-style-type: none"> <li>Complete</li> <li>Execution</li> <li>Initiation</li> <li>Planning</li> </ol>
	Continue to implement streetscape plans on cross streets between Franklin and Rosemary Streets.	West end streetscape improvements	Initiation
	Plan for Bus Rapid Transit (BRT).	<a href="#">BRT</a>	Planing
Variety	Increase exploration on informal and formal pathways with creative pedestrian level wayfinding signage.	<ol style="list-style-type: none"> <li><a href="#">1. Alleyway signage experiments</a></li> <li><a href="#">2. Street Design experiments</a></li> </ol>	<ol style="list-style-type: none"> <li>Execution</li> <li></li> </ol>

An aerial photograph of downtown Chapel Hill, North Carolina, showing a busy street with cars and pedestrians. Two large, semi-transparent circles are overlaid on the image: a blue circle on the left and a green circle on the right. The text 'Community Arts & Culture' is centered within the blue circle, and 'Downtown Chapel Hill' is centered within the green circle. The background shows a mix of historic and modern buildings, including a prominent multi-story brick building with a tower-like structure.

**Community  
Arts &  
Culture**

**Downtown  
Chapel Hill**






# ACKLANDARTMUSEUM

Partner with a variety of stakeholders to support a thriving downtown.



Create arts experiences in new and non-traditional venues.




**RODEO ON ROSEMARY**

**FOOD TRUCKS & FUN  
TO FEED LOCAL KIDS**

Bring the family and enjoy an afternoon of great music and food all while benefiting TABLE, a local non-profit that provides healthy, emergency food aid every week to hungry kids.

**SUNDAY, MARCH 31**  
1:00-4:00 PM

AT THE CORNER OF  
**ROSEMARY & COLUMBIA**  
DOWNTOWN CHAPEL HILL




**BLOOM FEST**

Sunday 1-6 pm, May 19, 2019

The Plaza @ 140 West Franklin St.  
Downtown Chapel Hill, North Carolina

Seek out private and public partners for downtown festivals and events.



**PLAYMAKERS**  
REPERTORY COMPANY

**PLAYMAKERS**  
**MOBILE**

**MACBETH**  
by William Shakespeare

directed by  
**TIA JAMES**

Experiment with new venues for downtown  
arts & culture events.



**Questions**

**Answers**