



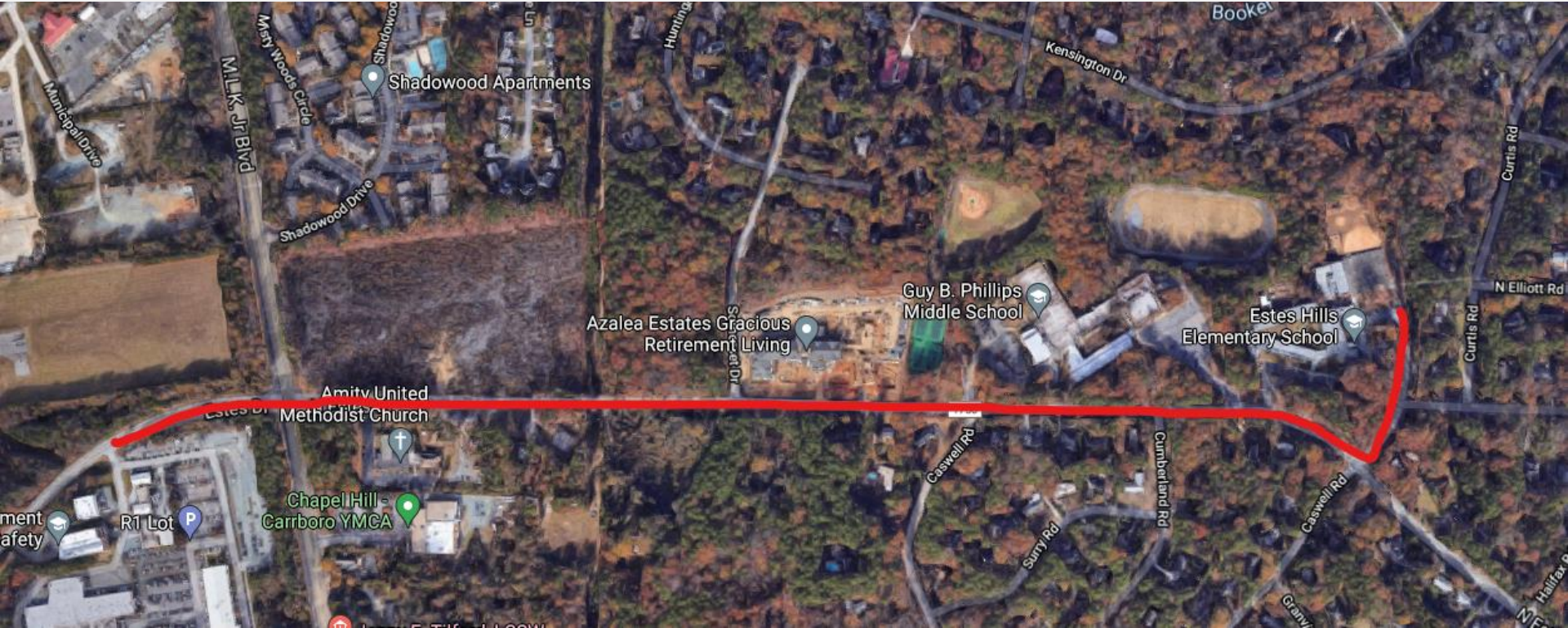
Estes Drive Bike-Ped Improvements

Public Meeting
August 4, 2021

MEETING PROTOCOLS

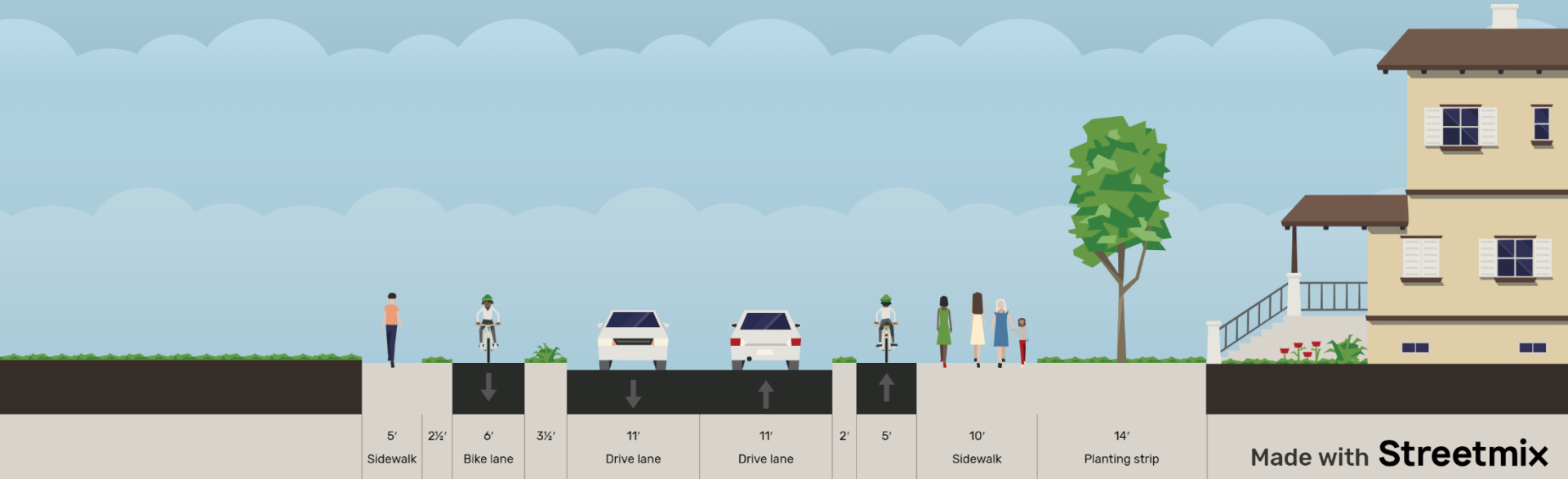
- Hold questions until the after the initial presentation
- If you have a question:
 - Raise your hand, or
 - Type question into chat
- We will call on you in the order hands are raised, interspersed with questions from the chat
- Please mute your microphones when you are not speaking
- Ask one question at a time and then let the next person speak
- Meeting is being recorded and will be made available online
- Anything added to the chat is part of the public record

Estes Drive Bike-Ped Improvements

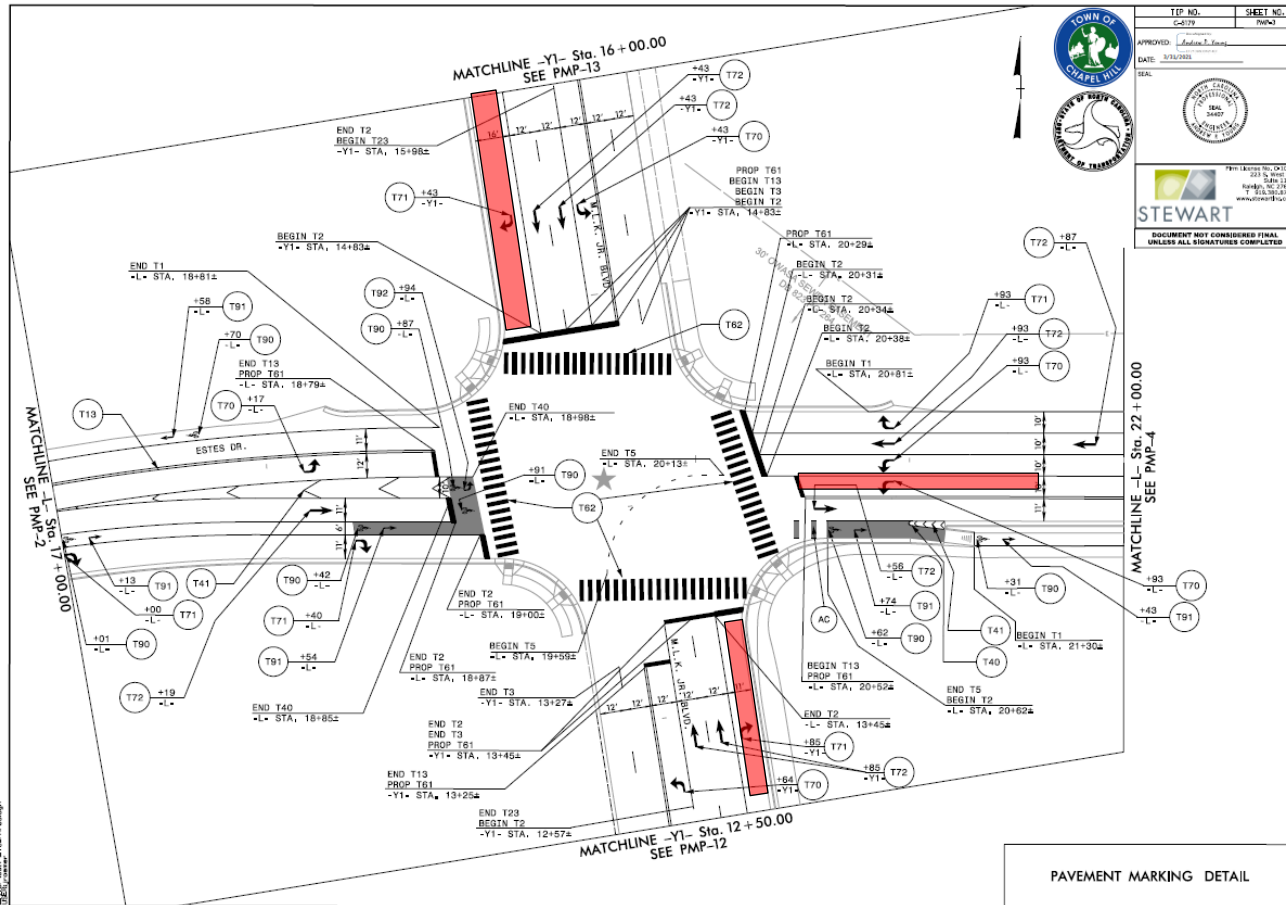


Typical Cross-Section

Westbound Estes Drive (typical)



Estes/MLK Intersection Improvements



TOWN OF CHAPEL HILL
UNIVERSITY OF NORTH CAROLINA
OFFICE OF TRANSPORTATION

TIP NO. C-479
SHEET NO. PMP-3

APPROVED: *Jonathan S. Jones*
DATE: 3/16/2015
SCALE:

SEAL: [Professional Engineer Seal]

STEWART
DOCUMENT NOT FOR CONSTRUCTION UNLESS ALL SIGNATURES COMPLETED

- Right turn lanes on MLK
- Additional left turn lane on WB Estes
- High vis crosswalks, ADA & ped signals

Construction Impacts

1. Temporary lane closures near MLK/Estes for 2 weeks
2. Start EB one way pattern between Caswell and Somerset
 - a. Construction on north side of Estes & on Caswell
3. Extend one way pattern to MLK
 - b. Construction on south side of Estes & MLK intersection
4. Construct median islands, final pavement & markings



Timeline

- **August 4th and 5th** - Public meeting and office hours
- **Late August** – Pre-construction meeting
- **September**– Begin clearing, grubbing, grading, utility relocation
- **October** – Real construction starts

Project expected to last 15-18 months

Questions

Town Project Managers:

Bergen Watterson – bwatterson@townofchapelhill.org

Mike Wright – mwright@townofchapelhill.org

Project website: www.townofchapelhill.org/Estes

Design Consultant:

Stewart Engineering

CEI Firm:

SEPI Engineering

Construction Firm:

Carolina Sunrock