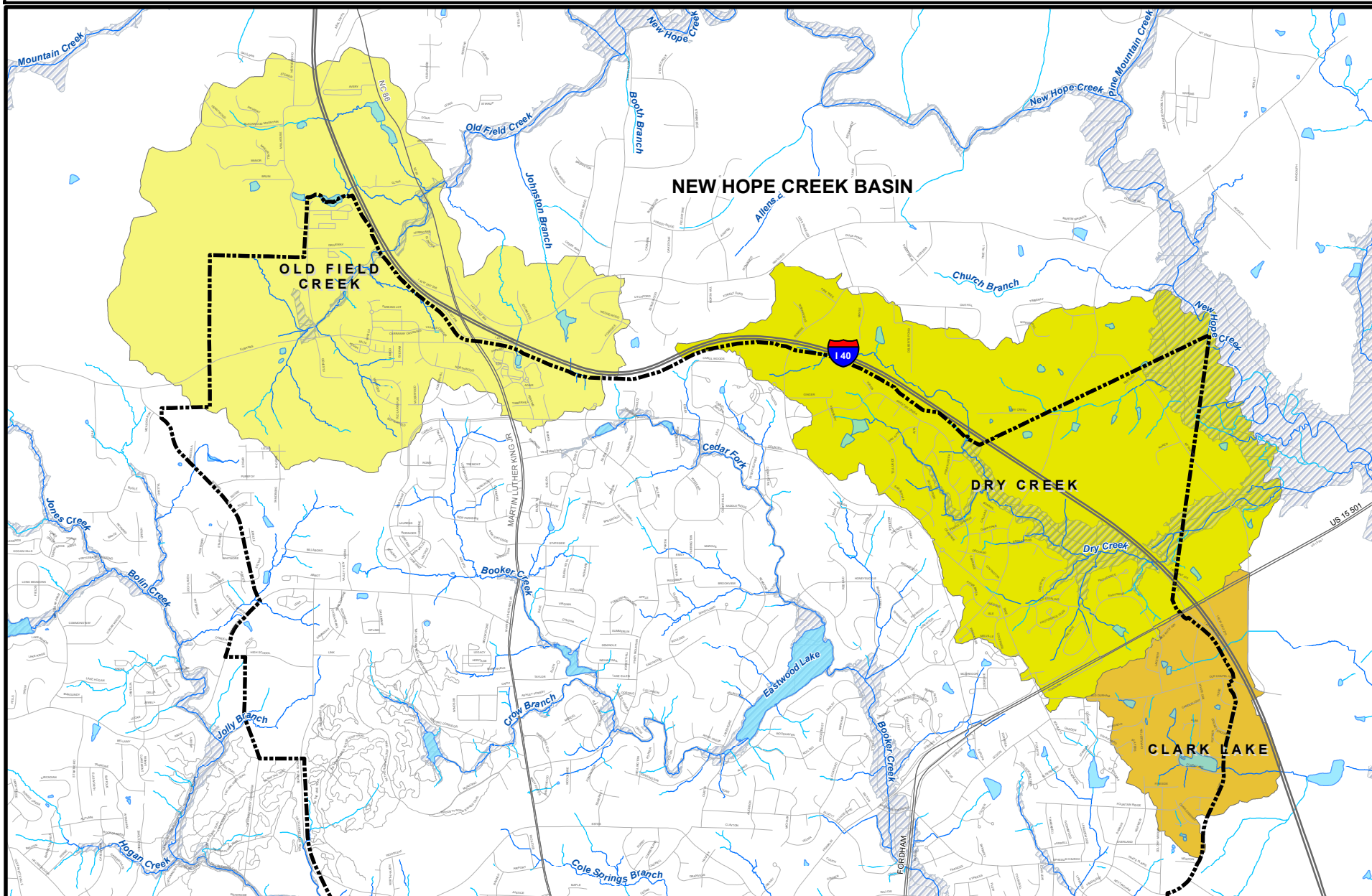
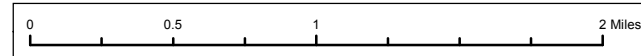


Chapel Hill Subwatersheds: Old Field & Dry Creeks, Clark Lake (New Hope Creek)



For more information on Chapel Hill Subwatersheds, visit www.townofchapelhill.org/stormwater

- Chapel Hill Zoning Jurisdiction
- Lake/Pond
- Intermittent Stream
- Perennial Stream
- 100-year floodplain



Map created by Town of Chapel Hill
Stormwater Management Division - January 6, 2022

Document Path: S:\GIS_DATA\Watersheds\Chapel Hill Subwatersheds - Old Field, Dry Creek, Clark Lake.mxd

