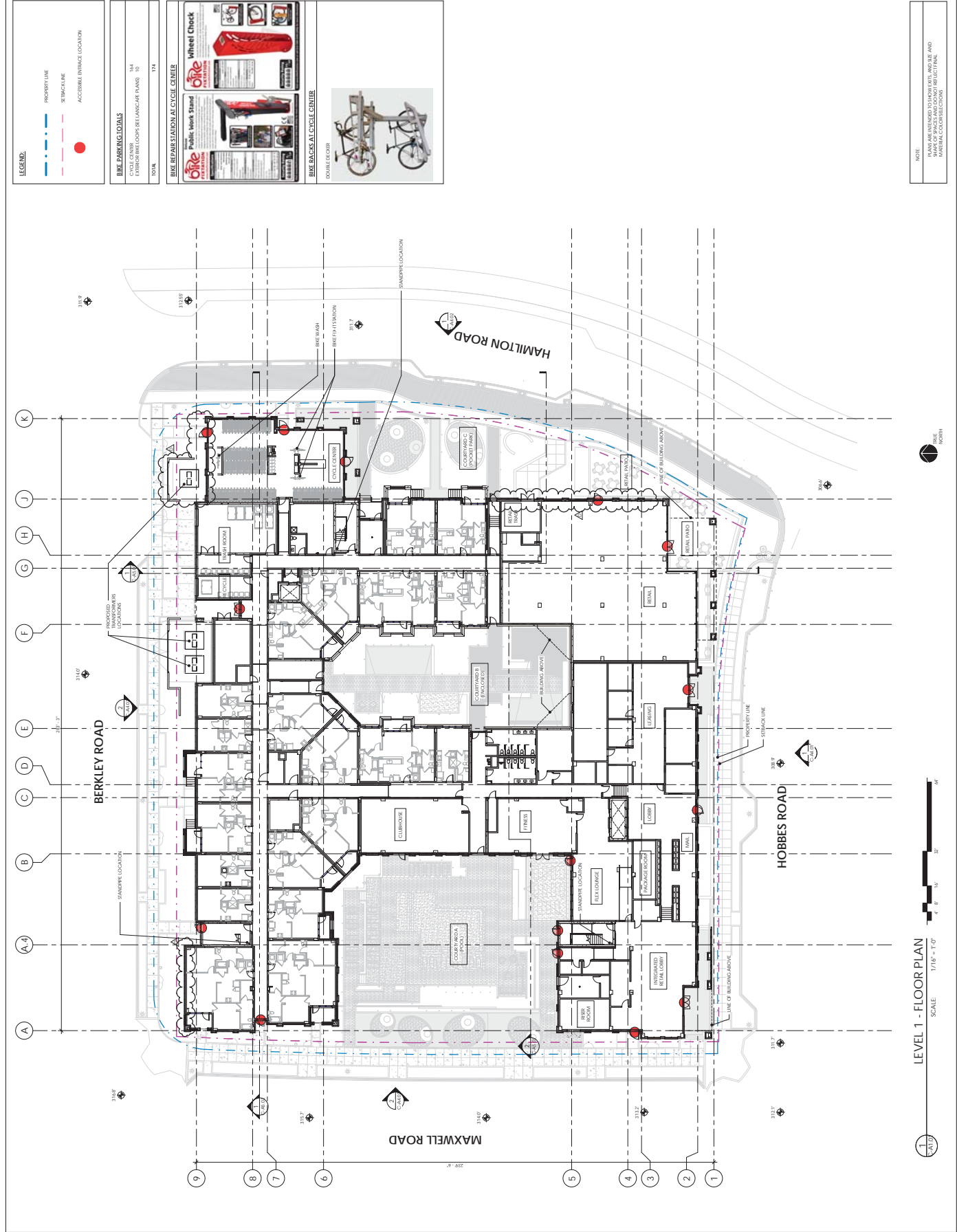




NO.	DESCRIPTION	DATE
1	PRELIMINARY	08.23.2022
2	REVISIONS	08.23.2022
3	COMMENTS IN CLARENCE	08.23.2022
4	FINAL	08.23.2022

OVERALL PLAN -
LEVEL 1

NOTE:
HALLS ARE INTENDED TO SHOW EITS, AND BE AND
MARKED ACCESSIBLE ROUTING.

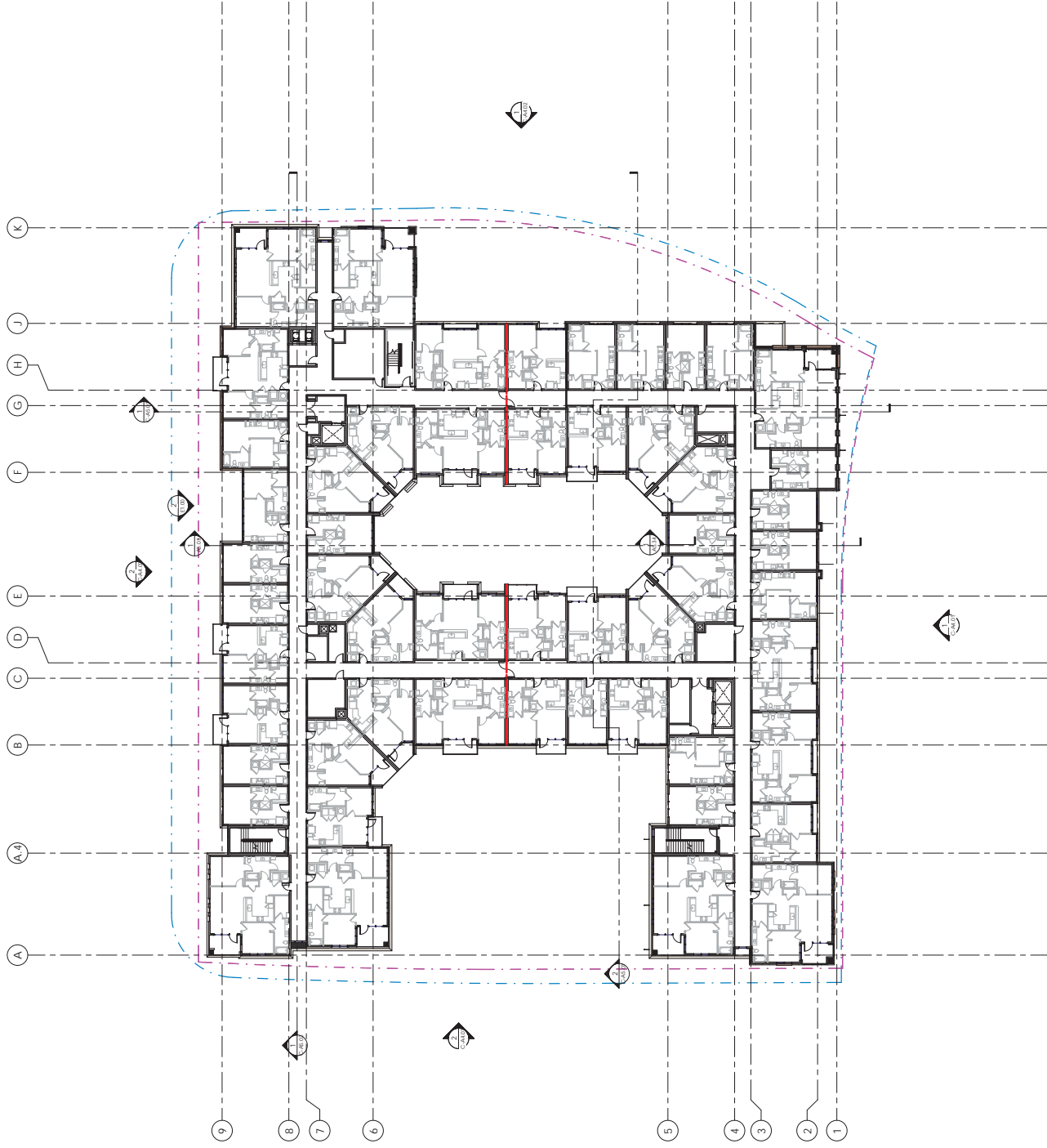


LEVEL 1 - FLOOR PLAN
SCALE: 1/16" = 1'-0"



NO.	DESCRIPTION	DATE
1	PRELIMINARY	04.03.2022
2	FOR PERMIT REVIEW	04.03.2022
3	FOR PERMIT REVIEW	04.13.2022
4	FOR PERMIT REVIEW	04.13.2022
5	FOR PERMIT REVIEW	04.13.2022

NOTE:
1. ALL DIMENSIONS TO CENTERLINE UNLESS SHOWN OTHERWISE.
2. SHOWN SPACES AND LOCATIONS REFLECT FINAL MATERIAL SELECTIONS.

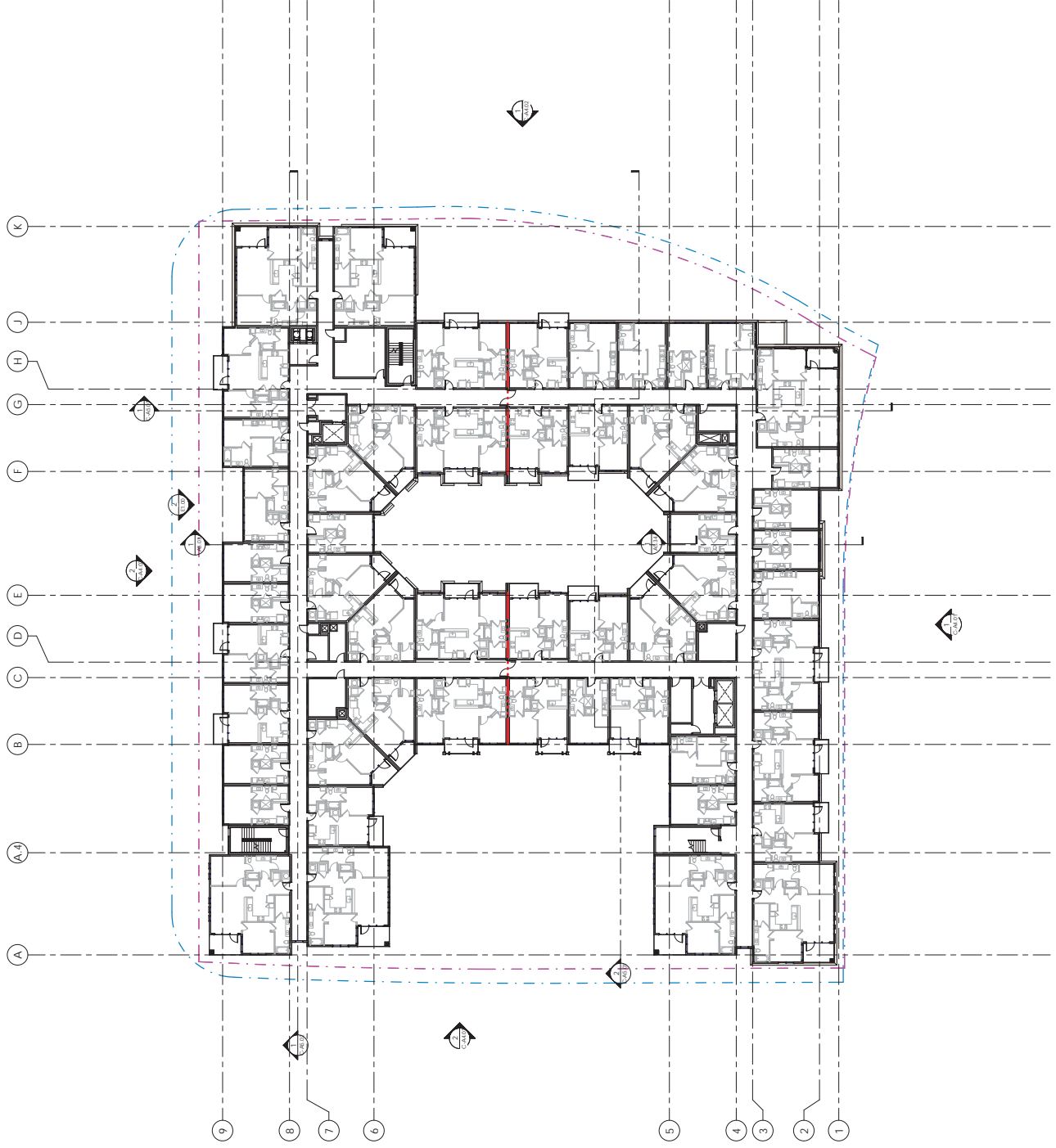


LEVEL 2 - FLOOR PLAN
SCALE: 1/16" = 1'-0"



NO.	DESCRIPTION	DATE
1	PRELIMINARY	08.23.2022
2	FOR PERMIT REVIEW	08.23.2022
3	FOR PERMIT REVIEW	08.23.2022
4	FOR PERMIT REVIEW	08.23.2022
5	FOR PERMIT REVIEW	08.23.2022

NOTE:
1. ALL FINISHES TO COMPLY WITH LOCAL, STATE AND
FEDERAL REQUIREMENTS AND ALL MATERIALS TO BE
AS SHOWN ON THESE DRAWINGS UNLESS OTHERWISE
NOTED.



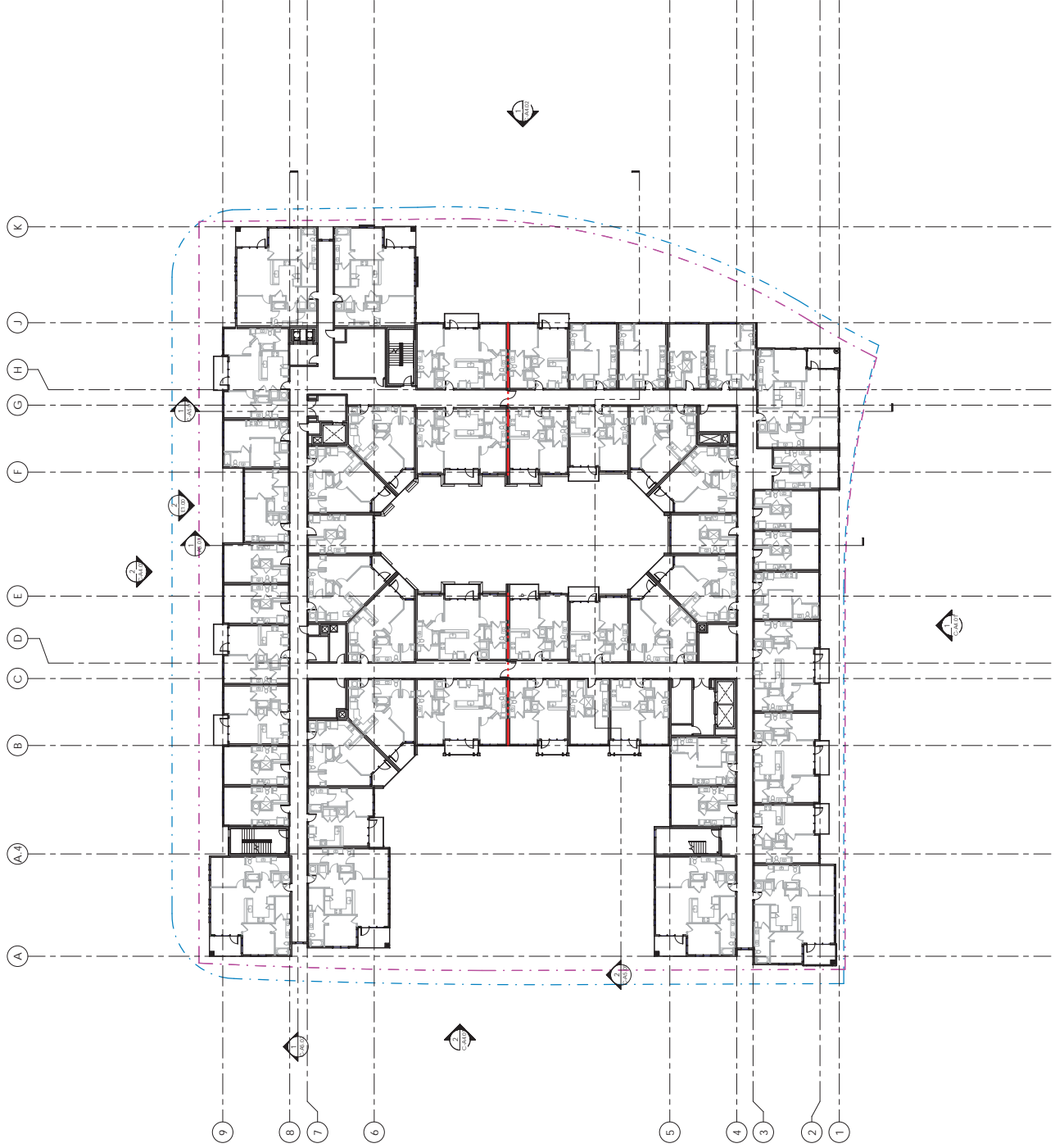
DACP LEVEL 3
SCALE: 1/16" = 1'-0"





NO.	DESCRIPTION	DATE
1	PRELIMINARY	04.03.2022
2	REVISED	04.03.2022
3	REVISED	04.03.2022
4	REVISED	04.03.2022
5	REVISED	04.03.2022
6	REVISED	04.03.2022
7	REVISED	04.03.2022
8	REVISED	04.03.2022
9	REVISED	04.03.2022
10	REVISED	04.03.2022
11	REVISED	04.03.2022
12	REVISED	04.03.2022
13	REVISED	04.03.2022
14	REVISED	04.03.2022
15	REVISED	04.03.2022
16	REVISED	04.03.2022
17	REVISED	04.03.2022
18	REVISED	04.03.2022
19	REVISED	04.03.2022
20	REVISED	04.03.2022
21	REVISED	04.03.2022
22	REVISED	04.03.2022
23	REVISED	04.03.2022
24	REVISED	04.03.2022
25	REVISED	04.03.2022
26	REVISED	04.03.2022
27	REVISED	04.03.2022
28	REVISED	04.03.2022
29	REVISED	04.03.2022
30	REVISED	04.03.2022
31	REVISED	04.03.2022
32	REVISED	04.03.2022
33	REVISED	04.03.2022
34	REVISED	04.03.2022
35	REVISED	04.03.2022
36	REVISED	04.03.2022
37	REVISED	04.03.2022
38	REVISED	04.03.2022
39	REVISED	04.03.2022
40	REVISED	04.03.2022
41	REVISED	04.03.2022
42	REVISED	04.03.2022
43	REVISED	04.03.2022
44	REVISED	04.03.2022
45	REVISED	04.03.2022
46	REVISED	04.03.2022
47	REVISED	04.03.2022
48	REVISED	04.03.2022
49	REVISED	04.03.2022
50	REVISED	04.03.2022
51	REVISED	04.03.2022
52	REVISED	04.03.2022
53	REVISED	04.03.2022
54	REVISED	04.03.2022
55	REVISED	04.03.2022
56	REVISED	04.03.2022
57	REVISED	04.03.2022
58	REVISED	04.03.2022
59	REVISED	04.03.2022
60	REVISED	04.03.2022
61	REVISED	04.03.2022
62	REVISED	04.03.2022
63	REVISED	04.03.2022
64	REVISED	04.03.2022
65	REVISED	04.03.2022
66	REVISED	04.03.2022
67	REVISED	04.03.2022
68	REVISED	04.03.2022
69	REVISED	04.03.2022
70	REVISED	04.03.2022
71	REVISED	04.03.2022
72	REVISED	04.03.2022
73	REVISED	04.03.2022
74	REVISED	04.03.2022
75	REVISED	04.03.2022
76	REVISED	04.03.2022
77	REVISED	04.03.2022
78	REVISED	04.03.2022
79	REVISED	04.03.2022
80	REVISED	04.03.2022
81	REVISED	04.03.2022
82	REVISED	04.03.2022
83	REVISED	04.03.2022
84	REVISED	04.03.2022
85	REVISED	04.03.2022
86	REVISED	04.03.2022
87	REVISED	04.03.2022
88	REVISED	04.03.2022
89	REVISED	04.03.2022
90	REVISED	04.03.2022
91	REVISED	04.03.2022
92	REVISED	04.03.2022
93	REVISED	04.03.2022
94	REVISED	04.03.2022
95	REVISED	04.03.2022
96	REVISED	04.03.2022
97	REVISED	04.03.2022
98	REVISED	04.03.2022
99	REVISED	04.03.2022
100	REVISED	04.03.2022

NOTE:
1. ALL DIMENSIONS TO CENTERLINE UNLESS SHOWN OTHERWISE.
2. VERIFY ALL DIMENSIONS AND CONDITIONS WITH THE ARCHITECT AND GENERAL CONTRACTOR BEFORE CONSTRUCTION.
3. MATERIALS AND FINISHES TO BE DETERMINED BY THE ARCHITECT AND GENERAL CONTRACTOR.

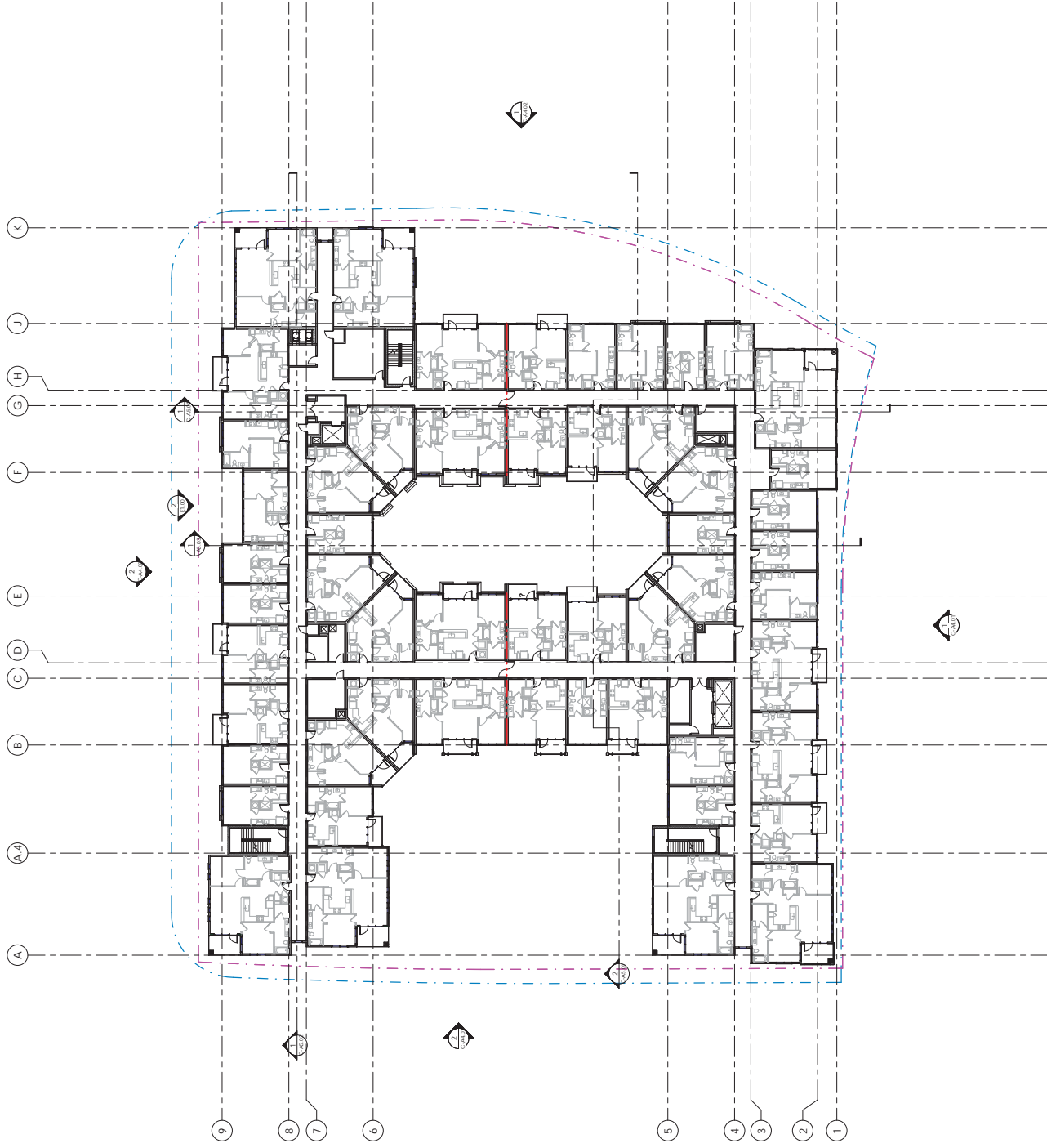


LEVEL 4 - FLOOR PLAN
SCALE: 1/16" = 1'-0"



NO.	DESCRIPTION	DATE
1	PRELIMINARY	04.03.2022
2	REVISED	04.03.2022
3	REVISED	04.03.2022
4	REVISED	04.03.2022
5	REVISED	04.03.2022
6	REVISED	04.03.2022
7	REVISED	04.03.2022
8	REVISED	04.03.2022
9	REVISED	04.03.2022
10	REVISED	04.03.2022
11	REVISED	04.03.2022
12	REVISED	04.03.2022
13	REVISED	04.03.2022
14	REVISED	04.03.2022
15	REVISED	04.03.2022
16	REVISED	04.03.2022
17	REVISED	04.03.2022
18	REVISED	04.03.2022
19	REVISED	04.03.2022
20	REVISED	04.03.2022
21	REVISED	04.03.2022
22	REVISED	04.03.2022
23	REVISED	04.03.2022
24	REVISED	04.03.2022
25	REVISED	04.03.2022
26	REVISED	04.03.2022
27	REVISED	04.03.2022
28	REVISED	04.03.2022
29	REVISED	04.03.2022
30	REVISED	04.03.2022
31	REVISED	04.03.2022
32	REVISED	04.03.2022
33	REVISED	04.03.2022
34	REVISED	04.03.2022
35	REVISED	04.03.2022
36	REVISED	04.03.2022
37	REVISED	04.03.2022
38	REVISED	04.03.2022
39	REVISED	04.03.2022
40	REVISED	04.03.2022
41	REVISED	04.03.2022
42	REVISED	04.03.2022
43	REVISED	04.03.2022
44	REVISED	04.03.2022
45	REVISED	04.03.2022
46	REVISED	04.03.2022
47	REVISED	04.03.2022
48	REVISED	04.03.2022
49	REVISED	04.03.2022
50	REVISED	04.03.2022
51	REVISED	04.03.2022
52	REVISED	04.03.2022
53	REVISED	04.03.2022
54	REVISED	04.03.2022
55	REVISED	04.03.2022
56	REVISED	04.03.2022
57	REVISED	04.03.2022
58	REVISED	04.03.2022
59	REVISED	04.03.2022
60	REVISED	04.03.2022
61	REVISED	04.03.2022
62	REVISED	04.03.2022
63	REVISED	04.03.2022
64	REVISED	04.03.2022
65	REVISED	04.03.2022
66	REVISED	04.03.2022
67	REVISED	04.03.2022
68	REVISED	04.03.2022
69	REVISED	04.03.2022
70	REVISED	04.03.2022
71	REVISED	04.03.2022
72	REVISED	04.03.2022
73	REVISED	04.03.2022
74	REVISED	04.03.2022
75	REVISED	04.03.2022
76	REVISED	04.03.2022
77	REVISED	04.03.2022
78	REVISED	04.03.2022
79	REVISED	04.03.2022
80	REVISED	04.03.2022
81	REVISED	04.03.2022
82	REVISED	04.03.2022
83	REVISED	04.03.2022
84	REVISED	04.03.2022
85	REVISED	04.03.2022
86	REVISED	04.03.2022
87	REVISED	04.03.2022
88	REVISED	04.03.2022
89	REVISED	04.03.2022
90	REVISED	04.03.2022
91	REVISED	04.03.2022
92	REVISED	04.03.2022
93	REVISED	04.03.2022
94	REVISED	04.03.2022
95	REVISED	04.03.2022
96	REVISED	04.03.2022
97	REVISED	04.03.2022
98	REVISED	04.03.2022
99	REVISED	04.03.2022
100	REVISED	04.03.2022

NOTE:
1. ALL DIMENSIONS TO CENTERLINE UNLESS SHOWN OTHERWISE.
2. VERIFY ALL DIMENSIONS AND LOCATIONS OF ALL ELEMENTS AND MATERIALS BEFORE CONSTRUCTION.



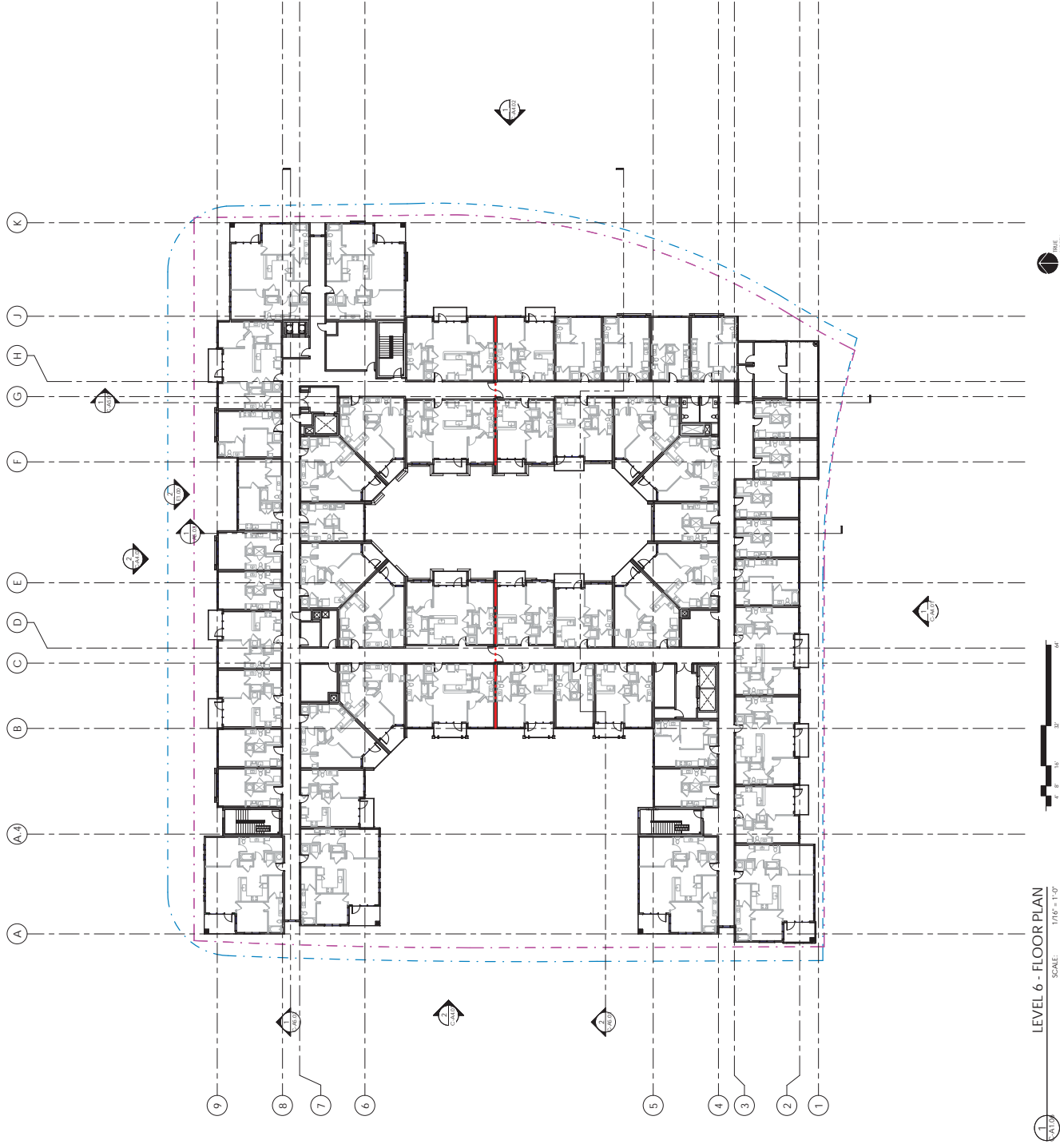
LEVEL 5 - FLOOR PLAN
SCALE: 1/16" = 1'-0"





NO.	DESCRIPTION	DATE
1	PRELIMINARY	04.03.2022
2	REVISED	04.03.2022
3	REVISED	04.03.2022
4	REVISED	04.03.2022
5	REVISED	04.03.2022
6	REVISED	04.03.2022
7	REVISED	04.03.2022
8	REVISED	04.03.2022
9	REVISED	04.03.2022
10	REVISED	04.03.2022
11	REVISED	04.03.2022
12	REVISED	04.03.2022
13	REVISED	04.03.2022
14	REVISED	04.03.2022
15	REVISED	04.03.2022
16	REVISED	04.03.2022
17	REVISED	04.03.2022
18	REVISED	04.03.2022
19	REVISED	04.03.2022
20	REVISED	04.03.2022
21	REVISED	04.03.2022
22	REVISED	04.03.2022
23	REVISED	04.03.2022
24	REVISED	04.03.2022
25	REVISED	04.03.2022
26	REVISED	04.03.2022
27	REVISED	04.03.2022
28	REVISED	04.03.2022
29	REVISED	04.03.2022
30	REVISED	04.03.2022
31	REVISED	04.03.2022
32	REVISED	04.03.2022
33	REVISED	04.03.2022
34	REVISED	04.03.2022
35	REVISED	04.03.2022
36	REVISED	04.03.2022
37	REVISED	04.03.2022
38	REVISED	04.03.2022
39	REVISED	04.03.2022
40	REVISED	04.03.2022
41	REVISED	04.03.2022
42	REVISED	04.03.2022
43	REVISED	04.03.2022
44	REVISED	04.03.2022
45	REVISED	04.03.2022
46	REVISED	04.03.2022
47	REVISED	04.03.2022
48	REVISED	04.03.2022
49	REVISED	04.03.2022
50	REVISED	04.03.2022
51	REVISED	04.03.2022
52	REVISED	04.03.2022
53	REVISED	04.03.2022
54	REVISED	04.03.2022
55	REVISED	04.03.2022
56	REVISED	04.03.2022
57	REVISED	04.03.2022
58	REVISED	04.03.2022
59	REVISED	04.03.2022
60	REVISED	04.03.2022
61	REVISED	04.03.2022
62	REVISED	04.03.2022
63	REVISED	04.03.2022
64	REVISED	04.03.2022
65	REVISED	04.03.2022
66	REVISED	04.03.2022
67	REVISED	04.03.2022
68	REVISED	04.03.2022
69	REVISED	04.03.2022
70	REVISED	04.03.2022
71	REVISED	04.03.2022
72	REVISED	04.03.2022
73	REVISED	04.03.2022
74	REVISED	04.03.2022
75	REVISED	04.03.2022
76	REVISED	04.03.2022
77	REVISED	04.03.2022
78	REVISED	04.03.2022
79	REVISED	04.03.2022
80	REVISED	04.03.2022
81	REVISED	04.03.2022
82	REVISED	04.03.2022
83	REVISED	04.03.2022
84	REVISED	04.03.2022
85	REVISED	04.03.2022
86	REVISED	04.03.2022
87	REVISED	04.03.2022
88	REVISED	04.03.2022
89	REVISED	04.03.2022
90	REVISED	04.03.2022
91	REVISED	04.03.2022
92	REVISED	04.03.2022
93	REVISED	04.03.2022
94	REVISED	04.03.2022
95	REVISED	04.03.2022
96	REVISED	04.03.2022
97	REVISED	04.03.2022
98	REVISED	04.03.2022
99	REVISED	04.03.2022
100	REVISED	04.03.2022

NOTE:
1. ALL MATERIALS TO BE USED SHALL BE OF THE
HIGHEST QUALITY AND SHALL BE SUBJECT TO
INSPECTION AND APPROVAL BY THE ARCHITECT.
2. ALL MATERIALS SHALL BE SUBMITTED FOR
APPROVAL BY THE ARCHITECT PRIOR TO
INSTALLATION.



LEVEL 6 - FLOOR PLAN
SCALE: 1/16" = 1'-0"

