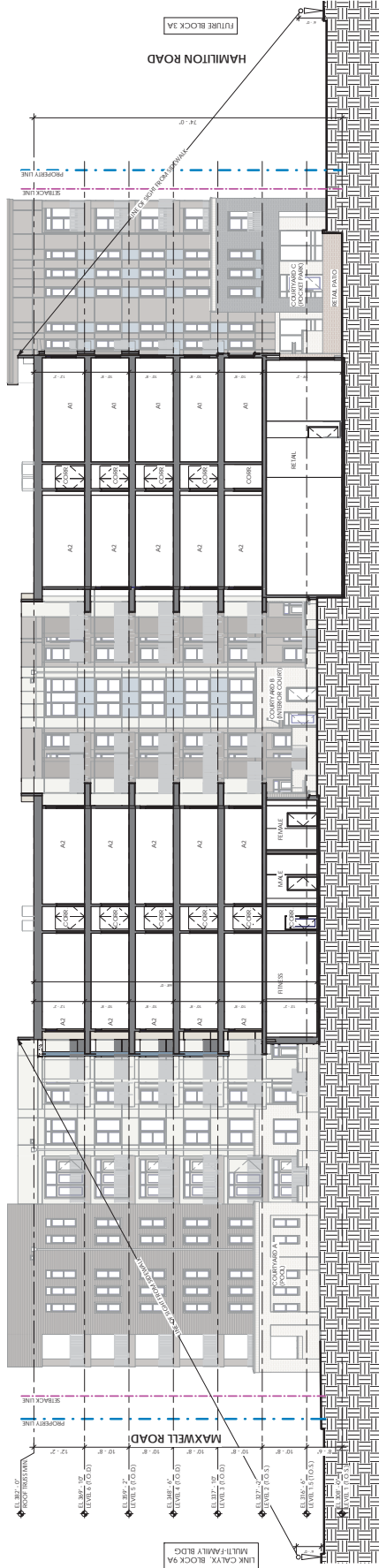


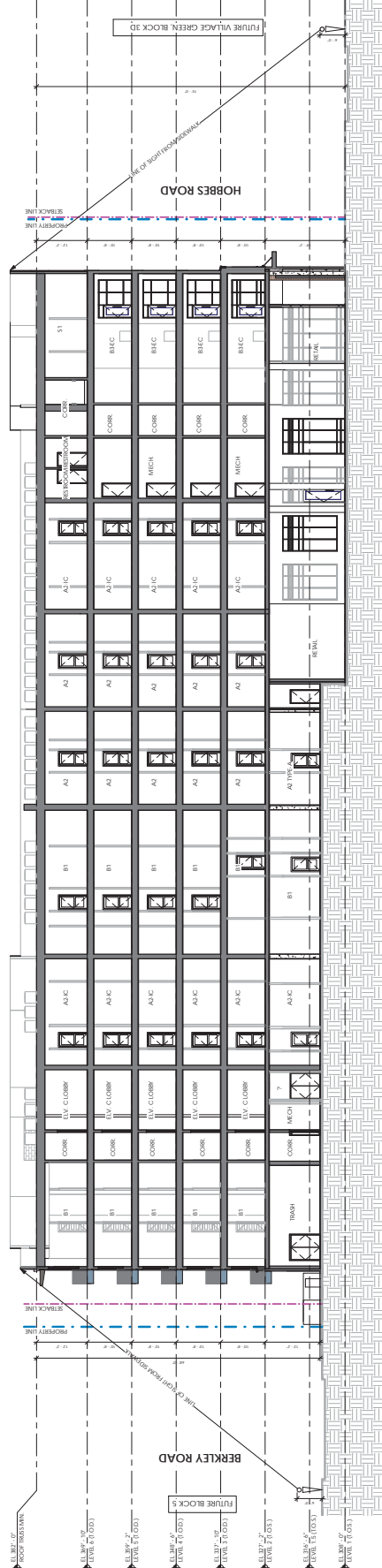


NO.	DATE	DESCRIPTION
1	08.23.2022	ISSUED FOR PERMIT
2	08.23.2022	REVISIONS
3	08.23.2022	COMMENTS TO CLIENT
4	08.23.2022	REVISIONS

NOTE:
GLASS INSULATIONS ARE INDICATED TO SHOW
CONSTRUCTION DETAILS. MATERIALS AND
DO NOT REFLECT FINAL MATERIAL, COLOR SELECTIONS



SECTION 2
SCALE: 3/32" = 1'-0"



SECTION 1
SCALE: 3/32" = 1'-0"

