

PLAN KEY NOTES

- ① 30" CONCRETE SPILL CURB & GUTTER (TYP.)
- ② 30" CONCRETE CURB & GUTTER (TYP.)
- ③ ACCESSIBLE RAMP (TYP.)
- ③A NCDOT ACCESSIBLE RAMP (TYP.)
- ④ COLLAPSIBLE BOLLARD (TYP.)
- ⑤ CONCRETE STAIRS
- ⑥ PAVEMENT MILLING DETAIL (TYP.)
- ⑦ 8" CONCRETE BAND (TYP.)
- ⑧ SIGHT TRIANGLE (TYP.)
- ⑨ CONCRETE SIDEWALK (TYP.)
- ⑩ CONCRETE ISLAND (TYP.)
- ⑪ WOODEN RAMP (TYP.) - SEE SHEET L0001-1
- ⑫ DETECTABLE WARNING DOMES

PAVING LEGEND

- A1 (C5001) HEAVY DUTY ASPHALT PAVEMENT
- A1 (C5001) NCDOT HEAVY DUTY ASPHALT PAVEMENT
- B1 (C5001) HEAVY DUTY CONCRETE PAVEMENT
- A1 (C5001) MULTI-USE PATH ASPHALT PAVEMENT
- B2 (C5001) CURB REPLACEMENT
- D1 (C5001) PAVEMENT MILLING
- CONCRETE
- BRICK PAVERS

PAVEMENT MARKING LEGEND

| SEE DETAIL REFERENCE | DESCRIPTION |
|----------------------|--|
| A5 (C5002) | WHITE EDGELINE (4", 90 MIL) |
| B12 | WHITE SOLID LANE LINE (4", 120 MIL) |
| C14 | 5 FT. - 9 FT. WHITE SKIP (4", 90 MIL) |
| D15 | 2 FT. - 6 FT. WHITE SKIP (4", 90 MIL) |
| E110 | YELLOW EDGELINE (4", 90 MIL) |
| F113 | YELLOW DOUBLE CENTER (4", 90 MIL) |
| G114 | 2 FT. - 6 FT. YELLOW SKIP (4", 90 MIL) |
| H161 | WHITE STOPBAR (24", 120 MIL) |
| J162 | WHITE CROSSWALK LINE (24", 120 MIL) |
| K170 | LEFT TURN ARROW (90 MIL) |
| L171 | RIGHT TURN ARROW (90 MIL) |
| M172 | STRAIGHT ARROW (90 MIL) |
| N174 | COMB. RIGHT/STRAIGHT ARROW (90 MIL) |
| O142 | WHITE DIAGONAL 8" (90 MIL) |

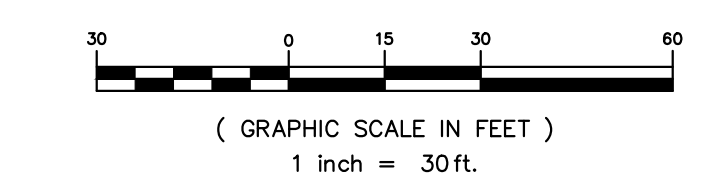
NOTES

1. ALL DIMENSIONS SHOWN ARE MEASURED FROM THE FACE OF CURB.
2. ALL RADIAL DIMENSIONS SHOWN HEREON ARE 3' UNLESS NOTED OTHERWISE.
3. ALL DRIVE AISLES AND PARKING LOTS SHALL BE CONSTRUCTED TO TOWN OF CHAPEL HILL STANDARDS.
4. THE TOWN OF CHAPEL HILL, ITS ASSIGNS OR ORANGE COUNTY SHALL NOT BE RESPONSIBLE FOR ANY PAVEMENT DAMAGE THAT MAY RESULT FROM SERVICE VEHICLES.
5. ALL WALKWAYS SHALL BE CONSTRUCTED WITH A 2% CROSS SLOPE IN THE DIRECTION SHOWN ON THE GRADING PLAN.
6. PRIOR TO INSTALLATION OF ANY STREET SIGNS OR MARKINGS, THE DEVELOPER WILL CONTACT THE TOWN'S PUBLIC WORKS DEPARTMENT FOR AN ON-SITE APPROVAL OF THE FINAL DESIGN AND PLACEMENT.
7. ALL PAVEMENT MARKINGS WITHIN THE PUBLIC RIGHT-OF-WAY WILL BE INSTALLED USING A THERMAL PLASTIC MATERIAL WITH A MINIMUM THICKNESS OF 125 MILS.
8. THE DEVELOPER WILL BE RESPONSIBLE FOR INSTALLATION OF ALL REQUIRED STREET SIGNS AND MARKINGS AND FOR ANY REPAIRS TO THESE SIGNS AND MARKINGS NECESSARY PRIOR TO THE FINAL ACCEPTANCE OF A NEW OR IMPROVED PUBLIC STREET FOR TOWN MAINTENANCE.

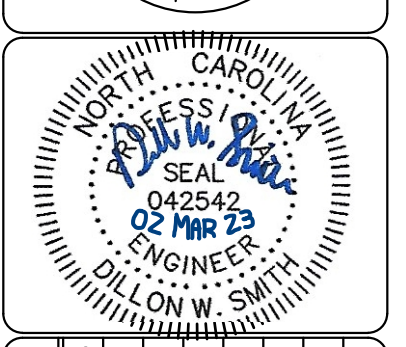
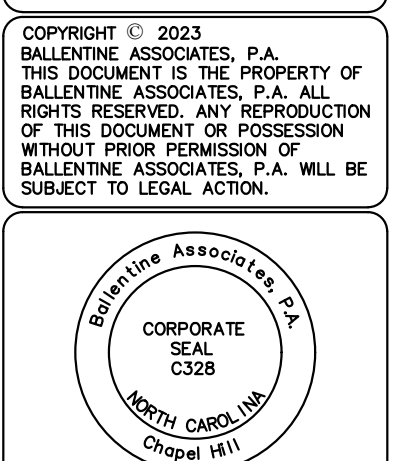
DRAWING LEGEND

| SYMBOL/ABBREVIATION | EXISTING | PROPOSED | DESCRIPTION |
|---------------------|----------|----------|------------------------|
| --- | --- | --- | PROPERTY LINE |
| --- | --- | --- | RIGHT-OF-WAY LINE |
| --- | --- | --- | ADJOINER PROPERTY LINE |
| --- | --- | --- | ROAD CENTERLINE |
| --- | --- | --- | EASEMENT LINE |
| --- | --- | --- | SETBACK LINE |
| --- | --- | --- | FENCE LINE |
| --- | --- | --- | OVERHEAD ELECTRIC LINE |
| --- | --- | --- | EXISTING IRON PIPE |
| --- | --- | --- | IRON PIPE SET |
| --- | --- | --- | CALCULATED POINT |
| --- | --- | --- | SIGN |
| --- | --- | --- | POWER POLE |

SITE PLAN - ROAD IMPROVEMENTS



REVIEW DRAWING NOT FOR CONSTRUCTION



DATE: 02 MAR 23

REVISIONS: PER DACP REVIEW COMMENTS

NUM: 1

OWNER INFORMATION: GLEN LENNOX SOUTH DRIVE, SUITE 110, CARY, NC 27511

OWNERS REPRESENTATIVE: WHITNEY ST. CHARLES (919) 388-5774
FAX (1000) 000-0000
EMAIL: whitney@ballentinesassociates.com

DATE: 21 SEP 22

ISSUED: DACP SUBMITTAL #1

DACP SUBMITTAL #2

ISSUED: DACP SUBMITTAL #1

DACP SUBMITTAL #2

ISSUED: DACP SUBMITTAL #1

DACP SUBMITTAL #2

ISSUED: DACP SUBMITTAL #1

DACP SUBMITTAL #2

ISSUED: DACP SUBMITTAL #1

DACP SUBMITTAL #2

ISSUED: DACP SUBMITTAL #1

DACP SUBMITTAL #2

ISSUED: DACP SUBMITTAL #1

DACP SUBMITTAL #2

ISSUED: DACP SUBMITTAL #1

DACP SUBMITTAL #2

ISSUED: DACP SUBMITTAL #1

DACP SUBMITTAL #2

ISSUED: DACP SUBMITTAL #1

DACP SUBMITTAL #2

ISSUED: DACP SUBMITTAL #1

DACP SUBMITTAL #2

ISSUED: DACP SUBMITTAL #1

DACP SUBMITTAL #2