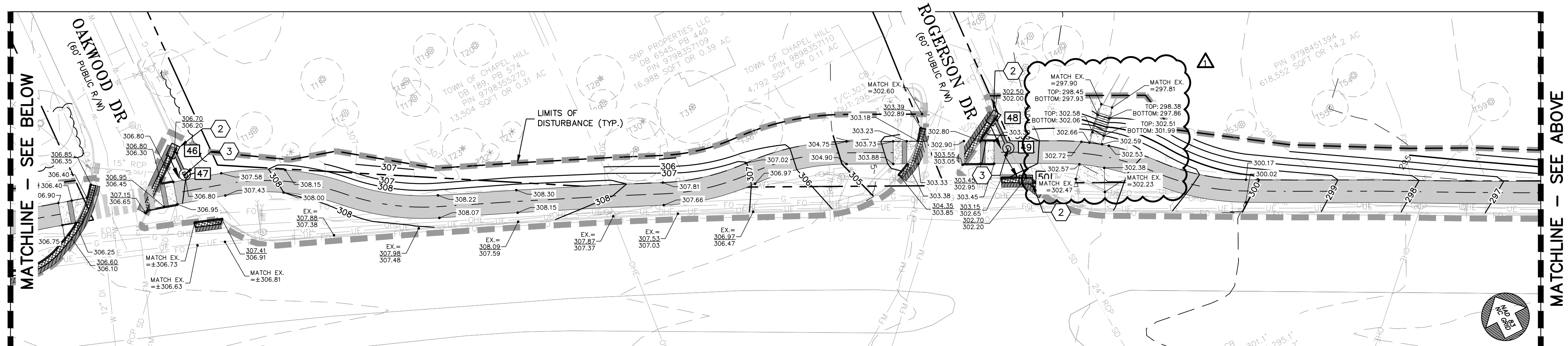
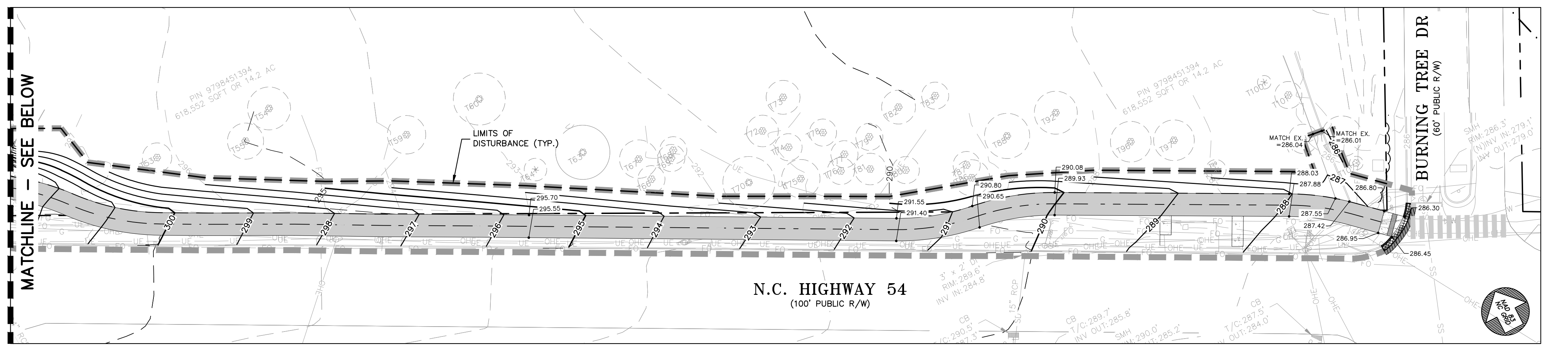




STRUCTURE TABLE			STRUCTURE TABLE			PIPE TABLE				PIPE TABLE												
STR. ID	RIM ELEV.* (FT)	STRUCTURE TYPE	STR. ID	RIM ELEV.* (FT)	STRUCTURE TYPE	US STR.	DS STR.	DIAMETER (IN)	MATERIAL	US INV. ELEV. (FT)	DS INV. ELEV. (FT)	LENGTH (FT)	SLOPE (FT/FT)	US STR.	DS STR.	DIAMETER (IN)	MATERIAL	US INV. ELEV. (FT)	DS INV. ELEV. (FT)	LENGTH (FT)	SLOPE (FT/FT)	
1	300.02	PIPE END	47	306.80	JB	1	2	24	RCP	300.02	299.49	53	0.0100	49	50	24	RCP	296.20	296.05	15	0.0098	
2	307.00	JB	48	302.00	CB	2	10	24	RCP	299.49	296.00	117	0.0299									
4	303.40	PIPE END	49	303.25	JB	4	5	12	PVC	303.40	302.74	66	0.0100									
5	306.00	JB	50	303.20	CB	5	9	12	PVC	299.00	296.50	66	0.0376									
9	304.82	JB				9	11	12	PVC	295.10	295.00	10	0.0105									
10	305.75	JB				10	11	24	RCP	296.00	294.40	74	0.0679									
11	304.64	JB				11	13	24	RCP	294.40	293.60	28	0.0103									
13	303.05	JB				13	14	24	RCP	293.60	290.30	226	0.0146									
14	296.50	CB				14	21	24	RCP	290.30	286.40	115	0.0340									
17	296.50	CB				17	19	24	RCP	289.80	286.50	109	0.0302									
18B	290.00	DI				18A	18B	18	RCP	287.30	286.60	42	0.0188									
18A	290.10	EX DI				18B	19	24	RCP	286.60	286.50	10	0.0103									
19	291.25	CB				19	24	24	RCP	286.50	286.00	41	0.0121									
20	290.00	DI				20	21	15	RCP	286.80	286.40	32	0.0124									
21	292.90	CB				21	24	24	RCP	286.40	286.00	33	0.0122									
22	292.50	JB				22	23	18	RCP	286.87	286.37	49	0.0100									
23	290.20	CB				23	24	18	RCP	286.37	286.00	37	0.0100									
24	290.70	JB				45	22	18	RCP	287.87	286.87	100	0.0100									
45	297.40	JB				46	47	15	RCP	303.20	303.00	11	0.0180									
46	306.20	CB				48	49	15	RCP	297.00	296.30	14	0.0487									

- ### GRADING & STORM DRAINAGE NOTES
- ALL CONSTRUCTION SHALL BE IN ACCORDANCE WITH ALL APPLICABLE TOWN OF CHAPEL HILL, NCDOT STANDARDS AND SPECIFICATIONS.
 - CONTRACTOR SHALL HAVE NORTH CAROLINA ONE CALL (1-800-432-4949), LOCATE ALL EXISTING UTILITIES PRIOR TO BEGINNING CONSTRUCTION. CONTRACTOR SHALL VERIFY THE DEPTH AND LOCATION OF ALL EXISTING UTILITIES AND NOTIFY THE ENGINEER OF ANY DISCREPANCIES OR CONFLICTS PRIOR TO BEGINNING CONSTRUCTION.
 - ALL STORM DRAINAGE PIPING WITH INSIDE DIAMETER OF 15 INCHES AND LARGER SHALL BE CLASS III RCP. SMALLER PIPING MATERIAL IS HDPE OR AS SHOWN.
 - ALL SIDEWALKS SHALL BE CONSTRUCTED SUCH THAT THE CROSS-SLOPE DOES NOT EXCEED 2%. IF THERE ARE ANY DISCREPANCIES, NOTIFY THE ENGINEER.
 - NO PART OF ANY ACCESSIBLE PARKING SPACE OR ADJACENT ACCESSIBLE AISLE SHALL HAVE A SLOPE GREATER THAN 2% IN ANY DIRECTION. IF THERE ARE ANY DISCREPANCIES, NOTIFY THE ENGINEER.
 - HVAC CONDENSATE AND FLOOR DRAINS UNDER A ROOF, AND SUMP PITS SERVING OR RELATED TO HYDRAULIC OR MECHANICAL EQUIPMENT (ELEVATORS) SHALL NOT BE DISCHARGED INTO STORM SEWER NETWORK.
 - NO POOL BACKWASH WATER ALLOWED TO DISCHARGE INTO STORM SEWER NETWORK.
 - DEWATERING OF THE POOL WATER INTO STORM SEWER NETWORK IS NOT ALLOWED UNLESS DE-CHLORINATED.
 - SALT WATER POOL DISCHARGE IS PROHIBITED TO THE STORM SEWER NETWORK.
 - ALL ROOF DRAIN PLUMBING INTENDED TO DISCHARGE TO STORM SEWER PIPE NOT SHOWN ON APPROVED PLAN SHEET ARE NOT APPROVED. ANY DISCHARGE TO STORM SEWER PIPE NOT APPROVED WILL NEED A REVIEW AND APPROVAL FROM THE STORMWATER MANAGEMENT DIVISION.
 - NO PERMANENT SLOPES SHALL BE STEEPER THAN 2:1 AND THE CONSTRUCTION OF ANY SLOPE STEEPER THAN 3:1 SHALL BE OBSERVED BY A GEOTECHNICAL ENGINEER'S REPRESENTATIVE TO ENSURE PROPER COMPACTION AND STABILIZATION.



DRAWING LEGEND

PLAN KEY NOTES	SYMBOL/ABBREVIATION	EXISTING	PROPOSED	DESCRIPTION
1 DROP INLET W/ STANDARD 24"x24" GRATE (TYP.)				PROPERTY LINE
2 STANDARD CATCH BASIN (TYP.)				RIGHT-OF-WAY LINE
3 JUNCTION BOX & CASTING (TYP.)				ADJOINER PROPERTY LINE
4 PERMEABLE PAVEMENT (TYP.)				EASEMENT LINE
5 PERMEABLE PAVEMENT INLET STRUCTURE				FENCE LINE
6 PERMEABLE PAVEMENT OUTLET STRUCTURE #1 (SCM #1)				STORM DRAIN LINE
7 PERMEABLE PAVEMENT OUTLET STRUCTURE #2 (SCM #2)				WATER LINE
8 STORMWATER CLEANOUT (TYP.)				SANITARY SEWER LINE
				UNDERGROUND ELECTRIC LINE
				OVERHEAD ELECTRIC LINE
				GAS LINE
				TELEPHONE LINE
				TREE LINE
				MAJOR CONTOUR
				MINOR CONTOUR
				LIMITS OF DISTURBANCE
				EXISTING IRON PIPE
				IRON PIPE SET
				CALCULATED POINT
				SIGN
				CATCH BASIN
				DROP INLET
				JUNCTION BOX
				WATER METER
				WATER VALVE
				FIRE HYDRANT
				FIRE DEPARTMENT CONNECTION
				BACKFLOW PREVENTER
				BLOW OFF VALVE
				SANITARY SEWER MANHOLE
				SANITARY SEWER CLEANOUT
				ELECTRIC POLE
				ELECTRIC TRANSFORMER
				GAS METER

GRADING & DRAINAGE PLAN PHASE 1

(GRAPHIC SCALE IN FEET)
1 inch = 30 ft.

REVISION DRAWING
NOT FOR CONSTRUCTION

Ballentine Associates, PA
919.929.0481
ballentineassociates.com

221 Providence Road
Chapel Hill, NC 27514

DATE: 02 MAR 23

REVISIONS:

DATE	DESCRIPTION
02 MAR 23	PER DACP REVIEW COMMENTS

OWNER INFORMATION
GLEN LENNOX SOUTH DRIVE
117 EDENBURGH SOUTH DRIVE
CARY, NC 27511
OWNERS REPRESENTATIVE:
WHITNEY ST. CHARLES
(919) 388-5774
FAX (919) 388-5774
EMAIL: wstcharles@ballentine.com

ISSUED: 21 SEP 22
DACP SUBMITTAL #1

21 SEP 22
DACP SUBMITTAL #2

02 MAR 23

GLEN LENNOX SOUTH INFRASTRUCTURE
CHAPEL HILL, NC

DACP DRAWINGS

JOB #: 107013.92
DATE: 21 SEP 22
SCALE: AS NOTED
DRAWN BY: D.W.S.
REVIEWED BY: G.J.R.

SHEET
C1201