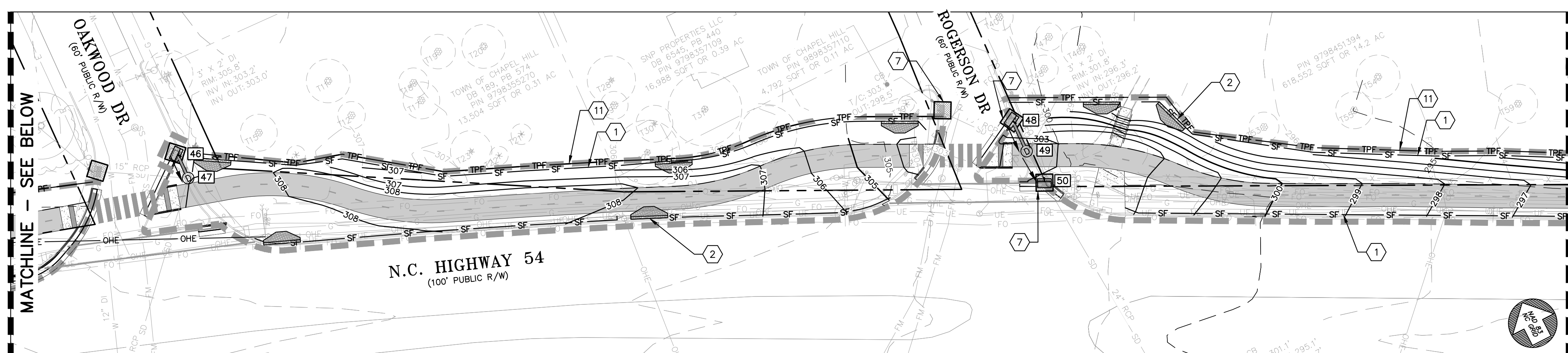
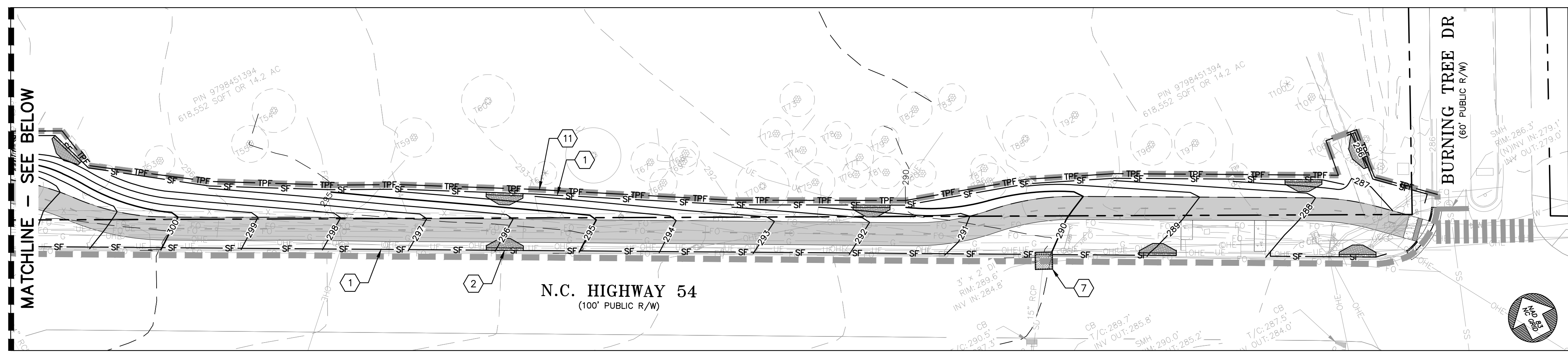


NOTES
 1. SEE SHEET C1303 FOR EROSION CONTROL & GRADING NOTES, CONSTRUCTION SEQUENCE, CONSTRUCTION MANAGEMENT NOTES, AND GROUND STABILIZATION REQUIREMENTS.



DRAWING LEGEND		SYMBOL/ABBREVIATION		DESCRIPTION
EXISTING	PROPOSED			
---	---	---	---	PROPERTY LINE
---	---	---	---	RIGHT-OF-WAY LINE
---	---	---	---	ADJACENT PROPERTY LINE
---	---	---	---	EASEMENT LINE
---	---	---	---	FENCE LINE
---	---	---	---	STORM DRAIN LINE
---	---	---	---	WATER LINE
---	---	---	---	SANITARY SEWER LINE
---	---	---	---	UNDERGROUND ELECTRIC LINE
---	---	---	---	OVERHEAD ELECTRIC LINE
---	---	---	---	GAS LINE
---	---	---	---	TELEPHONE LINE
---	---	---	---	TREE LINE
---	---	---	---	MAJOR CONTOUR
---	---	---	---	MINOR CONTOUR
---	---	---	---	LIMITS OF DISTURBANCE
---	---	---	---	CONSTRUCTION ENTRANCE
---	---	---	---	SILT FENCE
---	---	---	---	SILT FENCE OUTLET
---	---	---	---	CONCRETE WASHOUT
---	---	---	---	GRAVEL YARD INLET PROTECTION
---	---	---	---	EXISTING IRON PIPE
---	---	---	---	IRON PIPE SET
---	---	---	---	CALCULATED POINT
---	---	---	---	SIGN
---	---	---	---	CATCH BASIN
---	---	---	---	DROP INLET

- PLAN KEY NOTES**
- 1 TEMPORARY SILT FENCE (TYP.)
 - 2 TEMPORARY SILT FENCE STONE OUTLET (TYP.)
 - 3 TEMPORARY CONSTRUCTION ENTRANCE (TYP.)
 - 4 CONCRETE WASHOUT (TYP.)
 - 5 TIRE WASH (TYP.)
 - 6 TEMPORARY STOCKPILE AREA (TYP.)
 - 7 STANDARD SILT BAG - INLET SEDIMENT CONTROL DEVICE (TYP.)
 - 8 TEMPORARY STONE INLET PROTECTION (TYP.)
 - 9 TEMPORARY CONSTRUCTION SIGN
 - 10 CHAIN-LINK CONSTRUCTION FENCING (TYP.)
 - 11 STANDARD TREE PROTECTION FENCING (TYP.)
 - 12 TEMPORARY SEDIMENT BASIN #1
 - 13 TEMPORARY DIVERSION DITCH #1

STAGE 2 EROSION CONTROL & CONSTRUCTION MANAGEMENT PLAN - PHASE 1



(GRAPHIC SCALE IN FEET)
 1" = 30'
REVIEW DRAWING
 NOT FOR CONSTRUCTION

Ballentine Associates, PA
 221 Providence Road
 Chapel Hill, NC 27514
 919.929.0481
 ballentinesassociates.com

Professional Engineer Seal
 State of North Carolina
 No. 10054
 D. W. S. Ballentine

DATE	REVISIONS	NUM	OWNER INFORMATION
02 MAR 23	PER DACP REVIEW COMMENTS		117 EDENBURGH SOUTH DRIVE CARY, NC 27511 OWNERS REPRESENTATIVE: WHITNEY ST. CHARLES (919) 388-5774 FAX (919) 388-5774 FAX (919) 388-5774 FAX (919) 388-5774
21 SEP 22			
02 MAR 23			

ISSUED
 DACP SUBMITTAL #1
 DACP SUBMITTAL #2

GLEN LENNOX SOUTH INFRASTRUCTURE
 CHAPEL HILL, NC
 DACP DRAWINGS

JOB #: 107013.92
 DATE: 21 SEP 22
 SCALE: AS NOTED
 DRAWN BY: D.W.S.
 REVIEWED BY: G.J.R.

SHEET
C1302