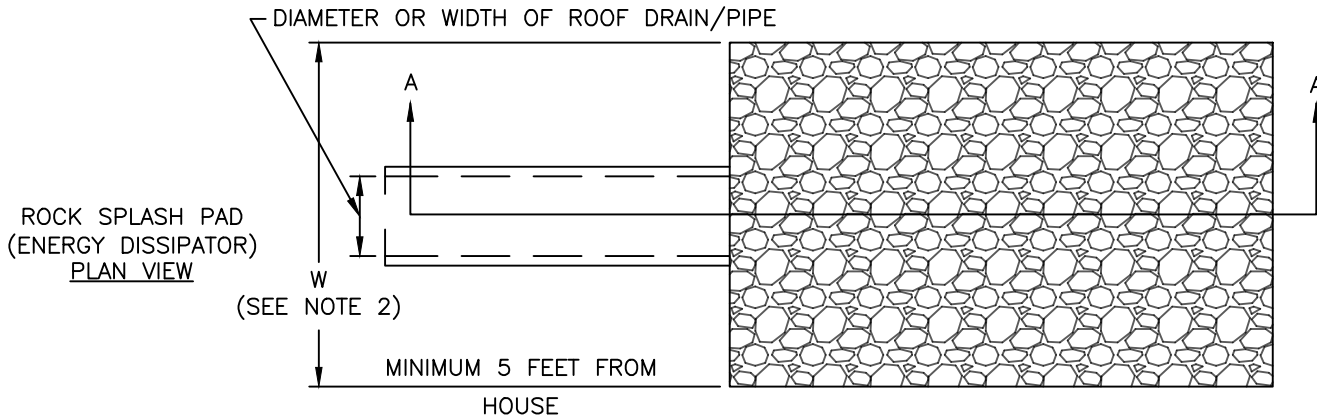
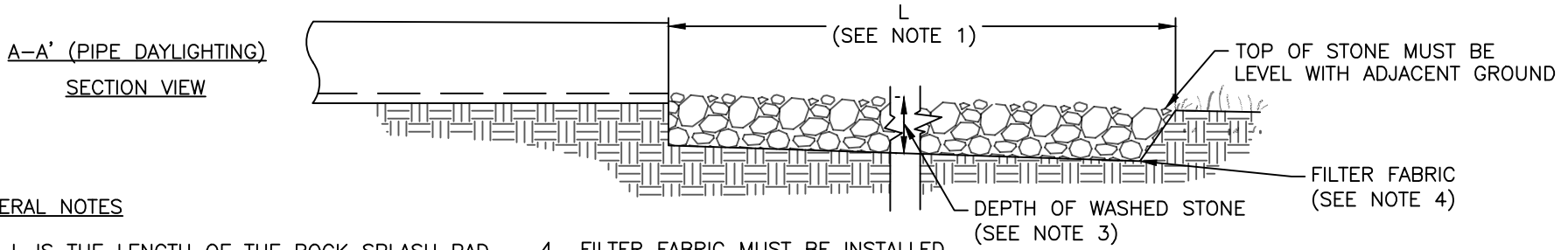
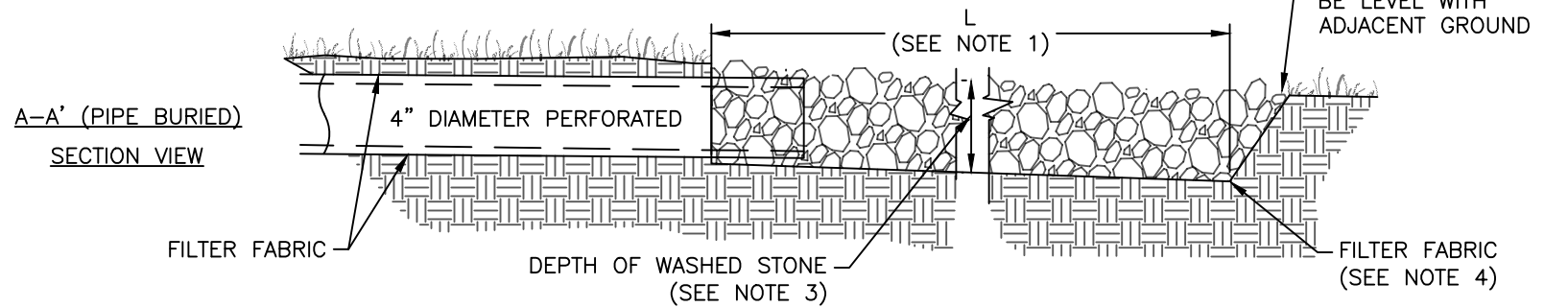


\\chfs\Engineering\Design Manual\Standard Details for 2023 Revision\CAD\CAD details\EC-300.dwg



- MAINTENANCE:
1. INSPECT DISSIPATOR AT LEAST WEEKLY AND AFTER EACH RAINFALL OF 1.0 INCH OR GREATER, LOOKING FOR INDICATION OF ROCK WASHOUT, PIPING, SCOUR HOLES, OR BANK FAILURES. MAKE ANY REPAIRS IMMEDIATELY.
  2. MAINTAIN ALL VEGETATION ADJACENT TO PAD IN A HEALTHY, VIGOROUS CONDITION.
  3. RESTORE STONE IN AREAS THAT HAVE LESS THAN THE MINIMUM THICKNESS



GENERAL NOTES

1. L IS THE LENGTH OF THE ROCK SPLASH PAD. MEASURED IN DIRECTION OF FLOW. THE MINIMUM LENGTH SHALL BE 6 TIMES THE DIAMETER OR WIDTH OF THE ROOF DRAIN/PIPE, BUT NOT LESS THAN 3 FEET.
2. W IS THE WIDTH OF THE ROCK SPLASH PAD, MEASURED PERPENDICULAR TO THE DIRECTION OF FLOW. THE MINIMUM WIDTH SHALL BE 3 TIMES THE DIAMETER OR WIDTH OF THE ROOF DRAIN/PIPE, BUT NOT LESS THAN 2 FEET.
3. FOR STONE WITH A  $D^{50}=4$  INCHES, THE STONE DEPTH SHALL BE A MINIMUM OF 9 INCHES. FOR STONE WITH A  $D^{50}=6$  INCHES, THE STONE DEPTH SHALL BE A MINIMUM OF 12 INCHES.
4. FILTER FABRIC MUST BE INSTALLED BETWEEN ROCK AND SOIL
5. STONE SHALL BE WASHED #57 GRAVEL OR EQUIVALENT
6. NO MORE THAN 1000 SQ. FT. OF ROOF AREA MAY BE DRAINED TO A SINGLE ROCK SPLASH PAD. IF 1000 SQ. FT. OF ROOF AREA IS EXCEEDING, USE STILLING BASIN PER TOCH DETAIL EC-8.00
7. MINIMUM DEPTH OF #57 STONE SHALL BE 6 INCHES AND VARIES WITH EXISTING GRADE CONDITIONS

" NOT TO SCALE "



TOWN OF CHAPEL HILL  
STANDARD DETAIL

REVISIONS
05/2024

ROCK SPLASH  
PAD

DATE: 02/2017

EC-3.00