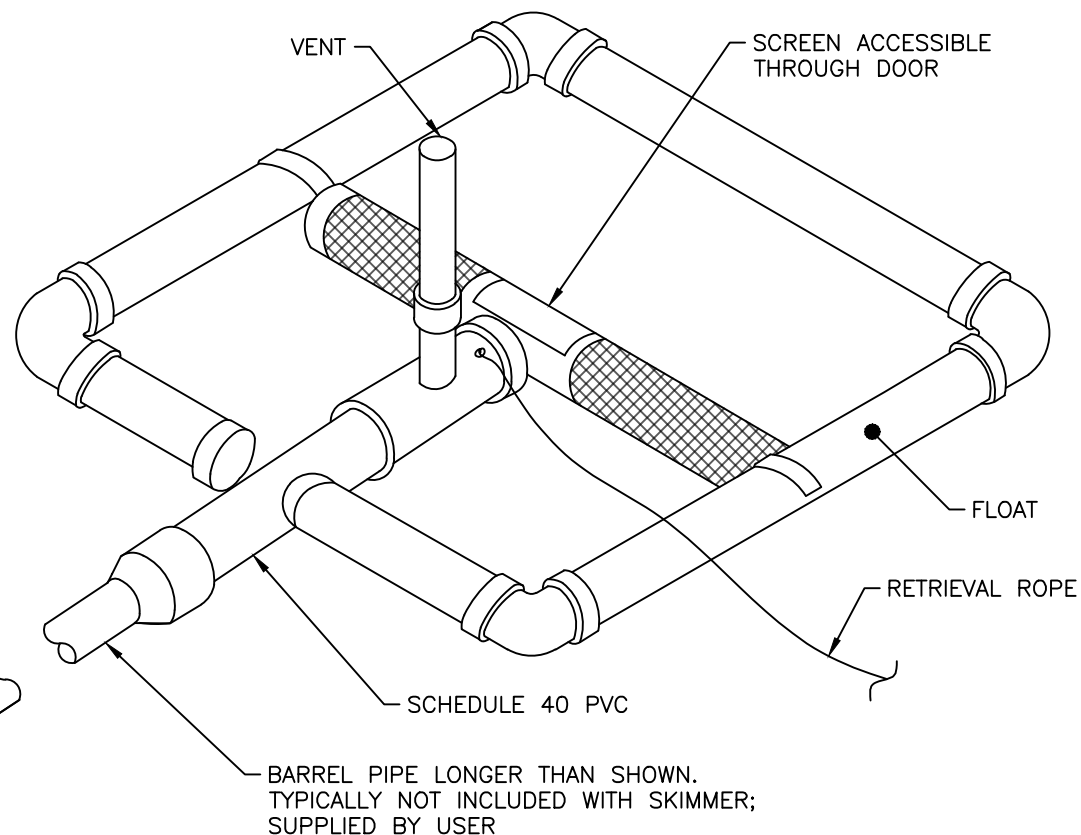
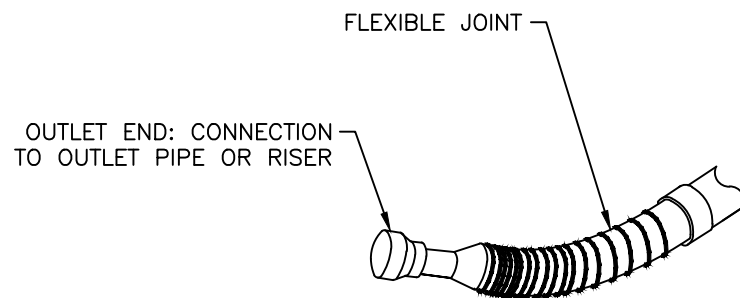


NOTES:

1. SKIMMER IS TO BE USED AS SURFACE DEWATERING DEVICE FOR TEMPORARY SEDIMENT BASIN OR OTHER APPROVED BMPS.
2. SKIMMER SHOULD RISE TO LEVEL OF WEIR HEIGHT IN TEMPORARY BASIN OR TO RISER INLET.
3. ATTACH DURABLE ROPE TO SKIMMER TO HELP WITH RETRIEVING SKIMMER FOR CLEANING
4. INSTALLATION: ASSEMBLE THE SKIMMER FOLLOWING MANUFACTURERS INSTRUCTIONS OR AS DESIGNED AND LAY ON THE BOTTOM OF THE BASIN WITH THE FLEXIBLE JOINT AT THE INLET OF THE BARREL PIPE. ATTACH THE FLEXIBLE JOINT TO THE BARREL PIPE AND POSITION THE SKIMMER OVER THE EXCAVATED PIT OR SUPPORT. BE SURE TO ATTACH A ROPE AND ANCHOR IT TO THE SIDE OF THE BASIN. THIS WILL BE USED TO PULL THE SKIMMER TO THE SIDE FOR MAINTENANCE.



MAINTENANCE:

1. INSPECT SKIMMER AT LEAST WEEKLY AND AFTER EACH RAINFALL OF 1.0 INCH OR GREATER. MAKE NECESSARY REPAIRS IMMEDIATELY.
2. MAKE SURE ANY VEGETATION GROWING IN THE BOTTOM OF THE BASIN DOES NOT HOLD DOWN THE SKIMMER.
3. ENSURE THE SKIMMER IS NOT CLOGGED WITH TRASH OR DEBRIS.
4. IF THE SKIMMER ARM OR BARREL PIPE IS CLOGGED, REMOVE ORIFICE AND CLEAR DEBRIS WITH A PLUMBER'S SNAKE OR BY FLUSHING WITH CLEAN WATER. BE SURE TO REPLACE THE ORIFICE BEFORE REPOSITIONING THE SKIMMER.

" NOT TO SCALE "



DATE: 02/2017

TOWN OF CHAPEL HILL
STANDARD DETAIL

REVISIONS

05/2024

STANDARD SKIMMER
DETAIL

EC-17.00