

Project:

**Tarheel Lodging  
Redevelopment**  
Chapel Hill, North Carolina

Developer:

**Tarheel Lodging, LLC  
and  
Unicorn Group  
Fifteen, LLC**  
6110 Falconbridge Rd. ste. 200  
Chapel Hill, North Carolina 27517

Sheet Title:

**OAS-3  
Layout &  
Planting Plan**

3	2-1-23	Phase-II Revisions + COA approval of Design Alternates 11-22-22
2	10-14-22	Revise OAS-3
1	10-25-19	Staff Comments 10-22-19; adjust street/area lights per Duke Energy & OWASA reqmnts.
No.	Date:	Issue Notes:

*Limitations of Use and Liability Disclaimer - This document and all associated documents are provided for a specific site and the named Project only. In no event shall the Client or any third party copy or use any of the concepts, plans, drawings, specifications, designs, or other documents or data, document produced by the Consultant in connection with the Project (the "Instruments of Service") for any purpose other than those noted above or in relation to any project other than the named Project without the prior written permission of the Consultant. Liability arising from the use of these documents is limited to the scope of services fee agreed to in the Project Proposal Scope of Services.*

Scale:  
1" = 10'-0" @ D-Size  
Date:  
June 27, 2019  
Drawn By:  
STM  
Drawing No.:  
na

**CS2103**  
of

**LEGEND - Streetscape**

- Street Light (Duke Energy)
- Pedestrian Light (Duke Energy)
- Area Light (Duke Energy)
- Bicycle Rack (Short-Term)
- Bicycle Locker (Long-Term)
- Park Bench
- Waste/Recycle Receptacles
- Planters
- Dog Station

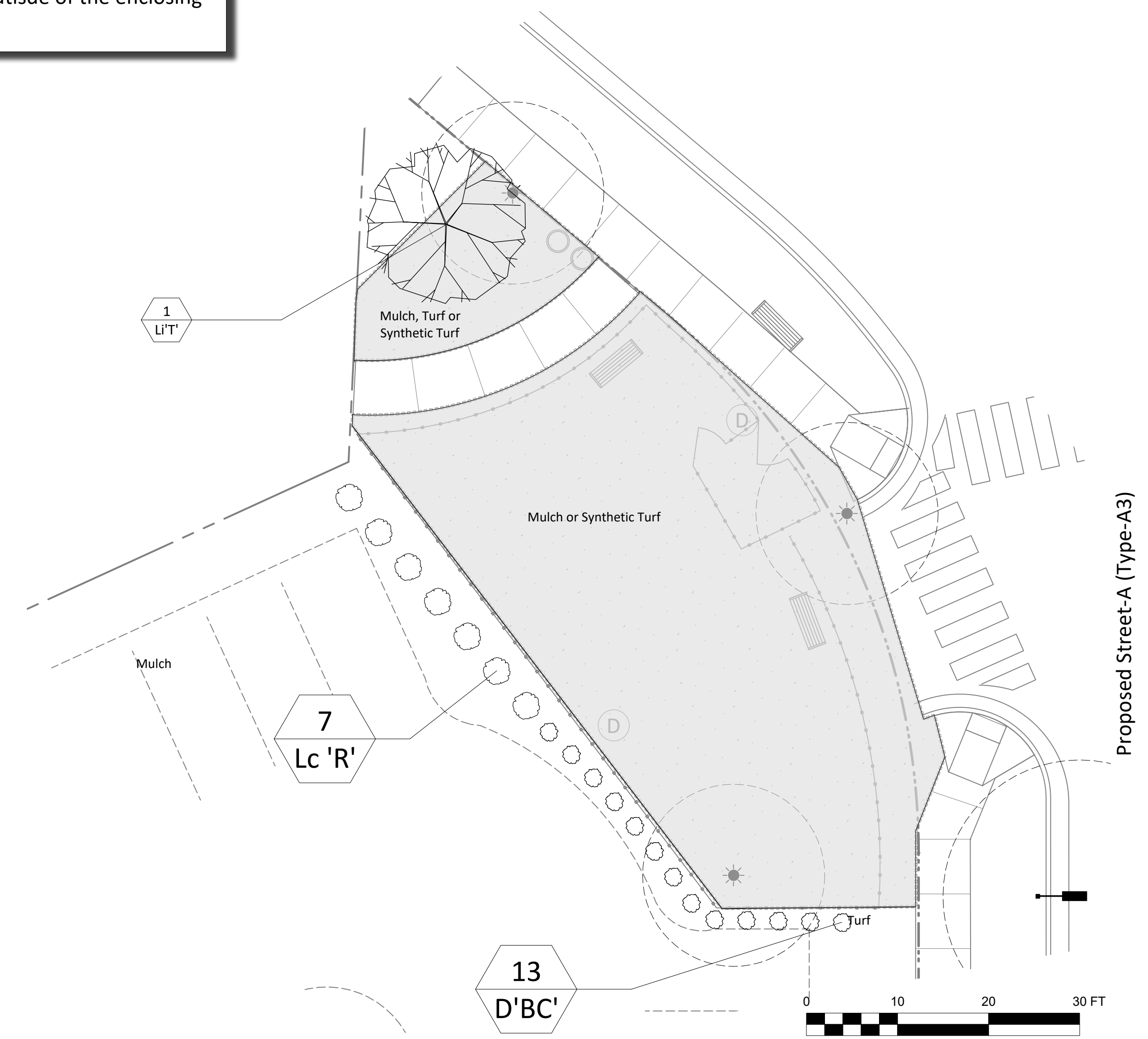
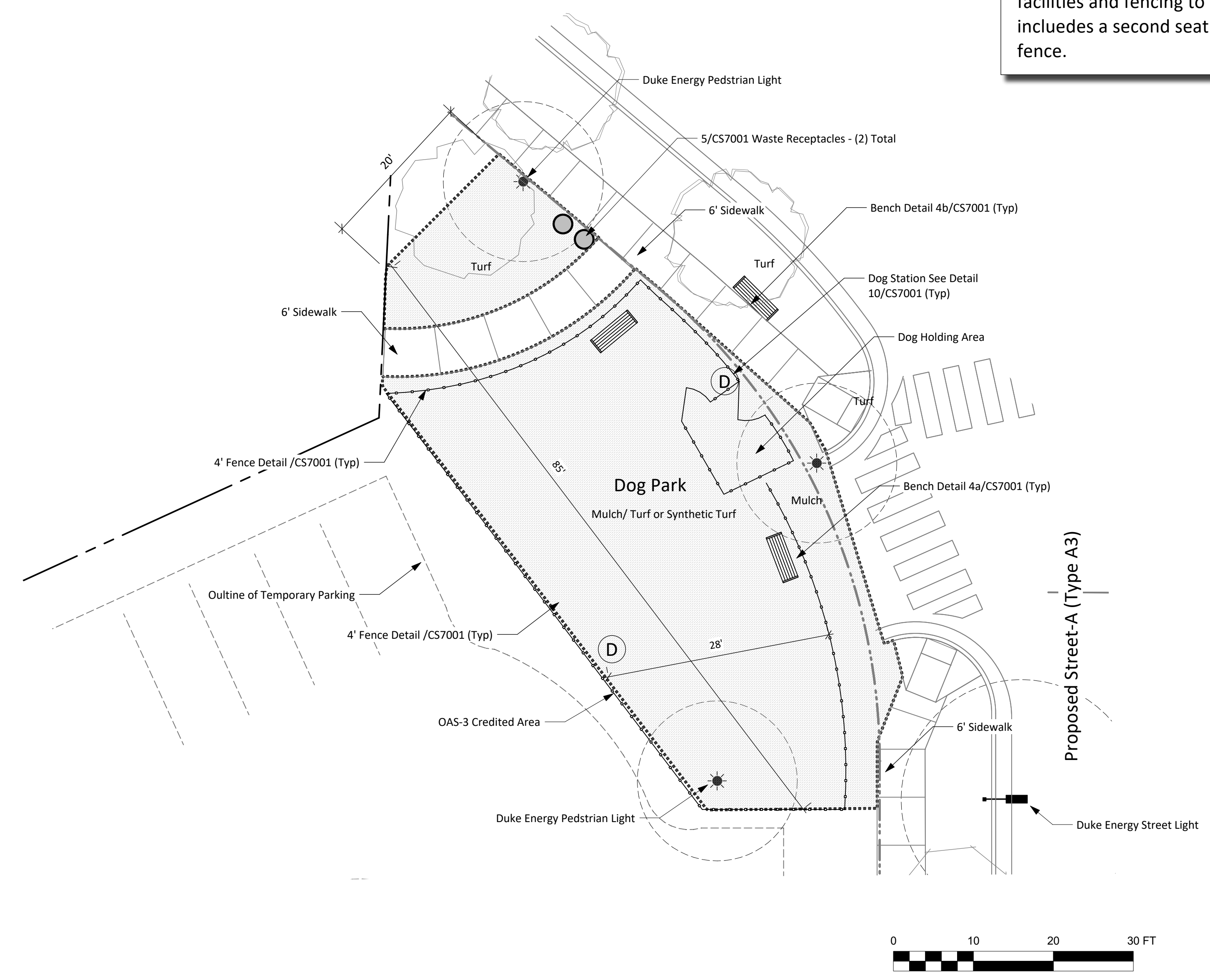
**General Notes**

- Contractor is responsible for all plants shown on plan regardless of quantities listed in schedule.
- All areas noted as Turf shall be seeded or sodded at the owner's discretion. See Sheet CS7101 for Planting Specifications. Synthetic turf (DuPont ForeverLawn Select Synthetic Grass or equal) may be substituted for natural turf at the owner's discretion.
- See Tree Protection Plan (sheet CS0503) for Limits of Disturbance and Tree Removal/Tree Save.
- Note: Contractor to Provide & Install Coconut Fiber Mat per Manufacturer's Specifications For All Slopes Greater Than 3:1. Slopes in Excess of 3:1 Shall be Permanently Stabilized with Seeding Specifications Noted on Sheet CS7101 in Addition to any Plantings Shown. See Temporary Seeding, Erosion and Sediment Control Notes Sheet CS8501 for Temporary Seeding.
- All shrub beds for parking lot or utility screening shall be 5'-0" or greater in width.
- Canopy street tree substitutions are subject to CDC approval.
- All tree plantings in turf areas shall include a 2.5' dia. (min.) mulch bed.
- Optional Plantings, where provided, may be downsized or reduced in numbers at the developer's discretion. Approval of this plan sheet is for species and varieties only.
- Species/Placement Restricted Due to Required Fire Access

**OAS-3 Design Intent/Programming: Outdoor Amenity Space 3 is designed as a dog park with seating, pet waste facilities and fencing to accommodate these activities. It includes a second seating area outside of the enclosing fence.**

**Plant List - OAS-3**

ID	Common Name	Botanical Name	Qty	Scheduled Size	Remarks & Spacing
<b>Trees</b>					
L1'T	Tonto Crape Myrtle	Lagerstroemia indica x faueri 'Tonto'	1	8' HT.	Single-Stem
<b>Shrubs</b>					
Lc 'R'	Ruby Loropetalum	Loropetalum chinense 'Ruby'	7	30" HT.	5' O.C.
D'BC'	Distylium Blue Cascade	Distylium 'PHIDIST-II' Plant Patent #24,409	13	24" HT.	3.5' O.C.



**1** OUTDOOR AMENITY SPACE-3 - LAYOUT  
1" = 10'-0"

**2** OUTDOOR AMENITY SPACE-3 - PLANTING  
1" = 10'-0"

3	2-1-23	Phase-II Revisions + COA approval of Design Alternates 11-22-22
2	10-14-22	Revise OAS-4 width
1	8-30-22	Phase-II Modifications
No.	Date:	Issue Notes:

*Limitations of Use and Liability Disclaimer - This document and all associated documents are provided for a specific site and the named Project only. In no event shall the Client or any third party copy or use any of the concepts, plans, drawings, specifications, designs, or other documents or data, document produced by the Consultant in connection with the Project (the "Instruments of Service") for any purpose other than those noted above or in relation to any project other than the named Project without the prior written permission of the Consultant. Liability arising from the use of these documents is limited to the scope of services fee agreed to in the Project Proposal Scope of Services.*

Scale: 1" = 10'-0" @ D-Size	<b>CS2104</b> of
Date: June 27, 2019	
Drawn By: STM	
Drawing No.: na	

- LEGEND - Streetscape**
- Street Light (Duke Energy)
  - Pedestrian Light (Duke Energy)
  - Area Light (Duke Energy)
  - Bicycle Rack (Short-Term)
  - Bicycle Locker (Long-Term)
  - Park Bench
  - Waste/Recycle Receptacles
  - Planters
  - Dog Station



Duncraft Airflow Songbird House (or equal)  
Model Number: 4436  
www.duncraft.com  
Quantity - Two  
Mounting: pole or suspended per manufacturer's recommendations

3 SONGBIRD HOUSE

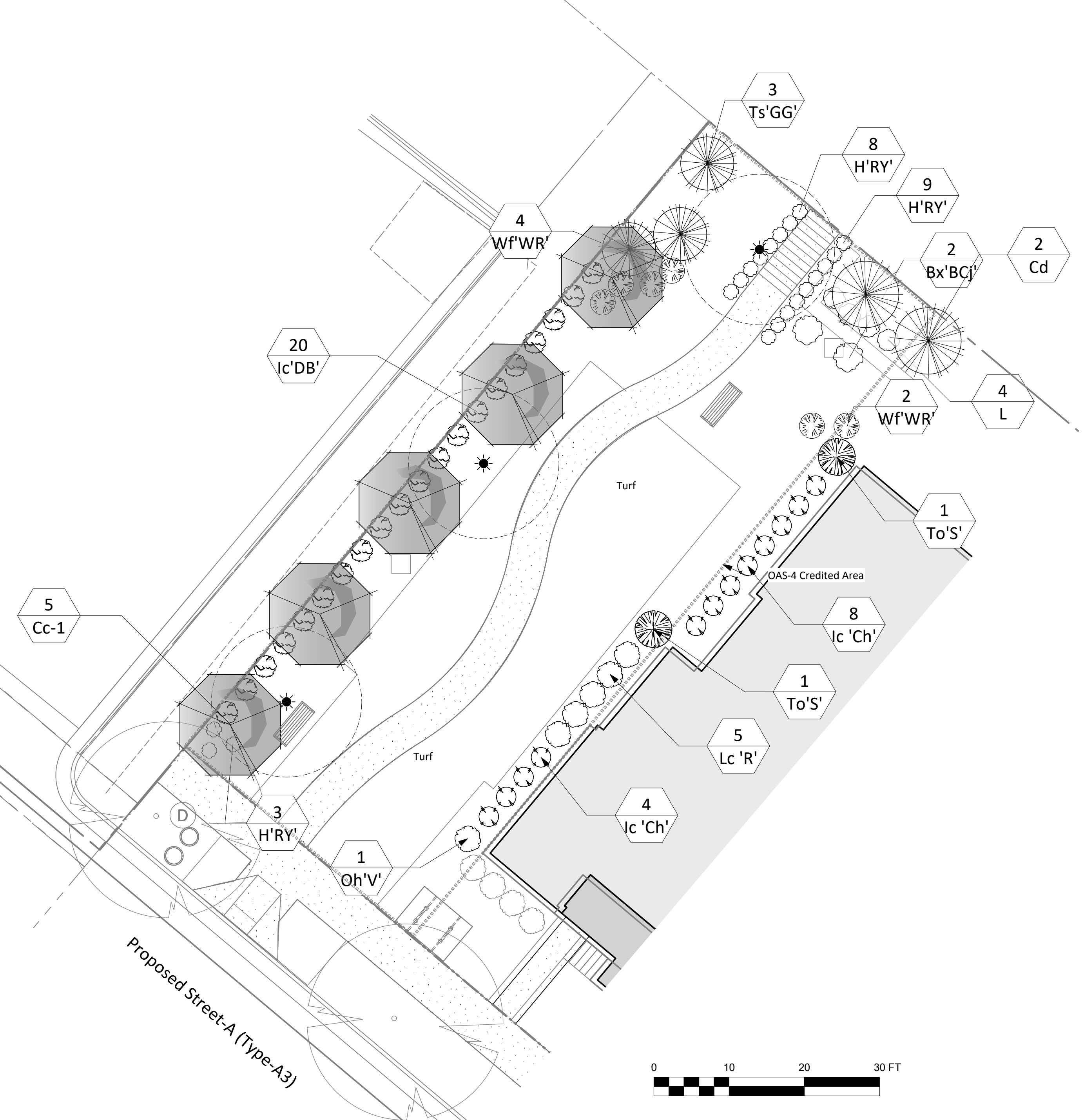
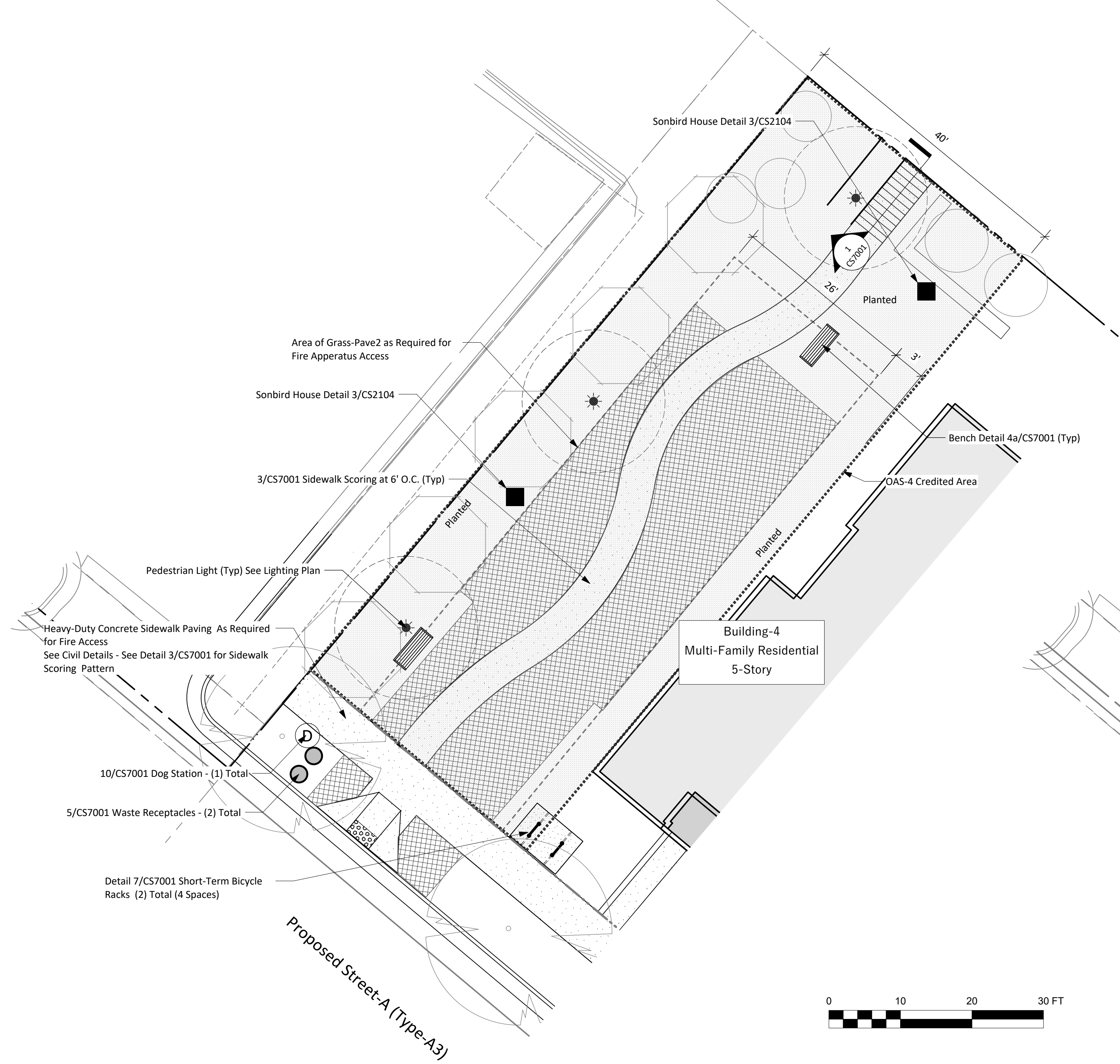
- General Notes**
- Contractor is responsible for all plants shown on plan regardless of quantities listed in schedule.
  - All areas noted as Turf shall be seeded or sodded at the owner's discretion. See Sheet CS7101 for Planting Specifications. Synthetic turf (DuPont ForeverLawn Select Synthetic Grass or equal) may be substituted for natural turf at the owner's discretion.
  - See Tree Protection Plan (sheet CS0503) for Limits of Disturbance and Tree Removal/Tree Save.
  - Note: Contractor to Provide & Install Coconut Fiber Mat per Manufacturer's Specifications For All Slopes Greater Than 3:1. Slopes in Excess of 3:1 Shall be Permanently Stabilized with Seeding Specifications Noted on Sheet CS7101 in Addition to any Plantings Shown. See Temporary Seeding, Erosion and Sediment Control Notes Sheet CS8501 for Temporary Seeding.
  - All shrub beds for parking lot or utility screening shall be 5'-0" or greater in width.
  - Canopy street tree substitutions are subject to CDC approval.
  - All tree plantings in turf areas shall include a 2.5' dia. (min.) mulch bed.
  - Optional plantings, where provided, may be downsized or reduced in numbers at the developer's discretion. Approval of this plan sheet is for species and varieties only.
  - Species/Placement Restricted Due to Required Fire Access

**OAS-4 Design Intent/Programming: Outdoor Amenity Space - 4 is intended to provide seating for quiet conversation and reading. Songbird houses and plantings designed to attract birds and butterflies are proposed.**

**Plant List - OAS-4 - Required Plantings**

ID	Common Name	Botanical Name	Qty	Scheduled Size	Remarks & Spacing
<b>Trees</b>					
Cd	Deodar Cedar	Cedrus deodara	2	8' HT.	
Ts'GG'	Green Giant Arborvitae	Thuja standishii x plicata 'Green Giant'	3	6' HT.	
Cc-1	American Hornbeam, Ironwood	Carpinus caroliniana	5	2.5" CAL.	15' Mature Ht.
<b>Shrubs</b>					
Bx'BCJ'	Blue Chip Jr. Butterfly Bush	Buddleja x 'Blue Chip Jr'	2	3 GAL	4' O.C.
Wf'WR'	Wine & Roses Weigela	Weigela florida 'Wine & Roses'	6	24" HT.	4' O.C.
To'S'	Emerald Green Arborvitae 'Smaragd'	Thuja occidentalis 'Smaragd'	2	6' HT.	6' O.C.
Oh'V'	Variiegated False Holly	Osmanthus heterophyllus 'Goshiki'	1	4' HT.	6' O.C.
Lc 'R'	Ruby Loropetalum	Loropetalum chinense ; 'Ruby'	5	30" HT.	5' O.C.
Ic 'Ch'	Chesapeake Japanese Holly	Ilex crenata 'Chesapeake'	12	4' HT.	4.5' O. C.
Ic'DB'	Dwarf Burford Holly	Ilex cornuta 'Burfordii Nana'	20	3' HT.	4' O.C.
<b>Perennials</b>					
L	Lantana - standard multi-color	Lantana - standard multi-color	4	3 GAL	3' O.C.
H'RY'	Red-Yellow Daylily	Hemerocallis x 'Red Yellow'	20	1 GAL	2' O.C.

Plant List Note: Planting included on the above Plant List are also shown on Sheet CS2202 Required Plantings.



1 OUTDOOR AMENITY SPACE-4 - LAYOUT  
1" = 10'-0"

2 OUTDOOR AMENITY SPACE-4 - PLANTING  
1" = 10'-0"

Scott Murray Land Planning, Inc.  
274 Botetourt Ct. Boydton, VA 23917  
252-213-9501 434-689-2925 (fax)  
www.stmlandplan.com  
smurray@stmlandplan.com

Project:

**Tarheel Lodging  
Redevelopment**  
Chapel Hill, North Carolina

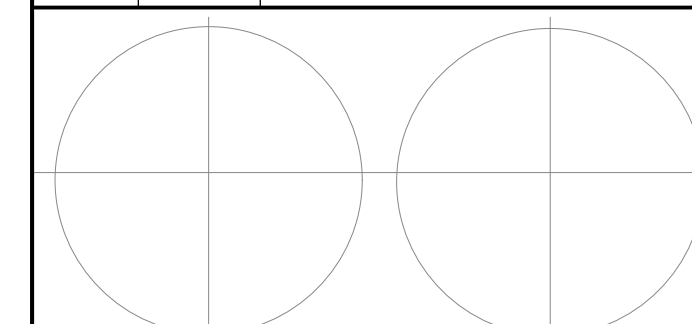
Developer:

**Tarheel Lodging, LLC  
and  
Unicorn Group  
Fifteen, LLC**  
6110 Falconbridge Rd. ste. 200  
Chapel Hill, North Carolina 27517

Sheet Title:

**OAS-7  
Layout &  
Planting Plan**

3	2-1-23	Phase-II Revisions + COA approval of Design Alternates 11-22-22
2	10-14-22	Revise OAS-7
1	8-30-33	Phase-II Modifications
No.	Date:	Issue Notes:



*Limitations of Use and Liability Disclaimer - This document and all associated documents are provided for a specific site and the named Project only. In no event shall the Client or any third party copy or use any of the concepts, plans, drawings, specifications, designs, or other documents or data, document produced by the Consultant in connection with the Project (the "Instruments of Service") for any purpose other than those noted above or in relation to any project other than the named Project without the prior written permission of the Consultant. Liability arising from the use of these documents is limited to the scope of services fee agreed to in the Project Proposal Scope of Services.*

Scale:  
1" = 10'-0" @ D-Size  
Date:  
June 27, 2019  
Drawn By:  
STM  
Drawing No.:  
na

**CS2107**  
of

**OAS-7 Design Intent/Programming: Outdoor Amenity Space - 7 is intended to provide seating for quiet contemplative activities as a complement to other Outdoor Amenity Spaces on-site. It will also serve as a sitting area for residents and visitors that frequent the area for leashed pet exercise/relief activities.**

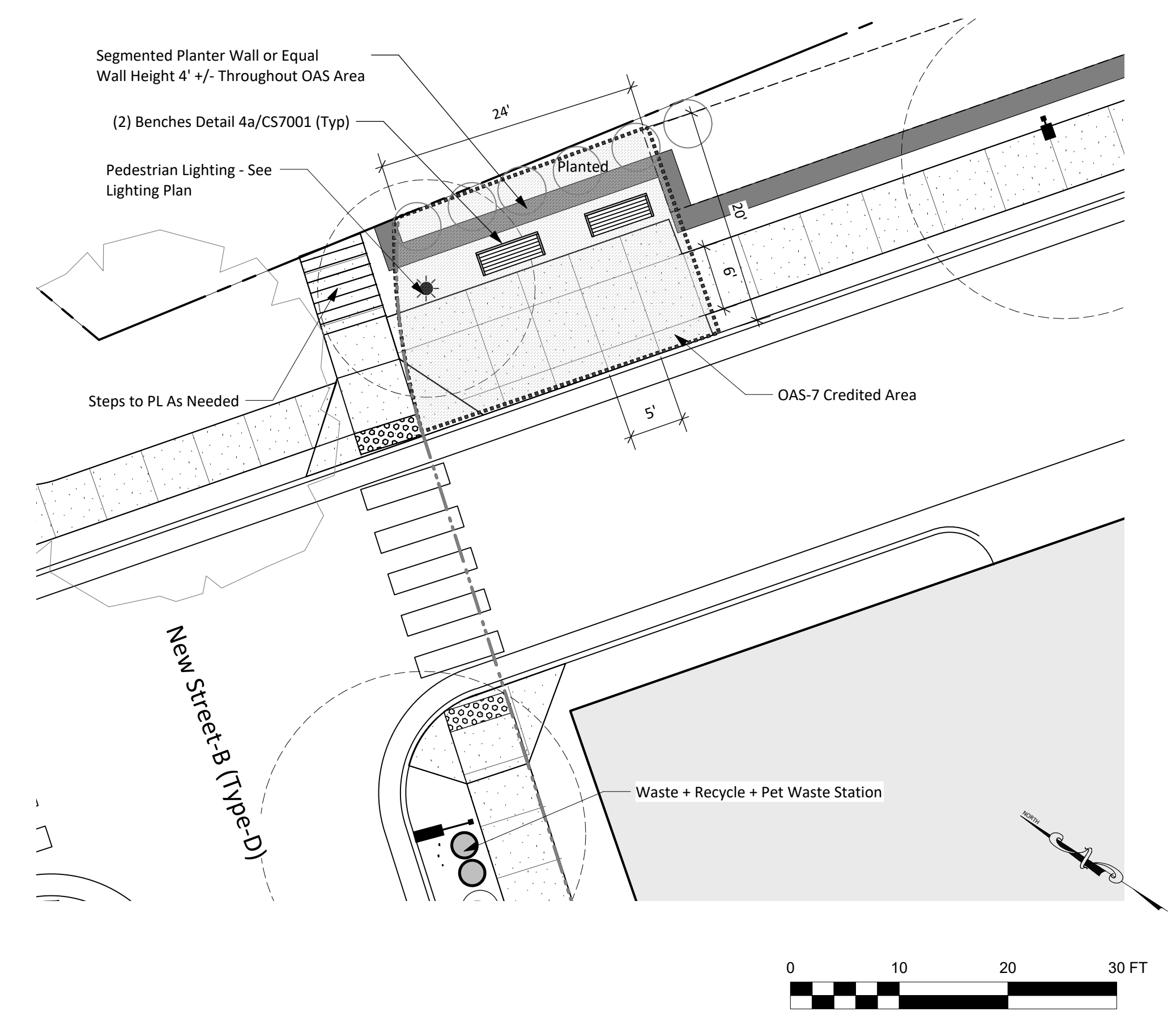
Plant List - OAS-7			Plant List		
ID	Common Name	Botanical Name	Qty	Scheduled Size	Remarks & Spacing
<b>Trees</b>					
1xA'F'	Foster's #2 Holly	Ilex x attenuata 'Foster's #2'	6	7' HT.	10' O.C. or as shown
<b>Shrubs</b>					
<b>Ground Cover</b>					

Plant List Note: Planting included on the above Plant List are also shown on Sheet CS2202 Required Plantings.

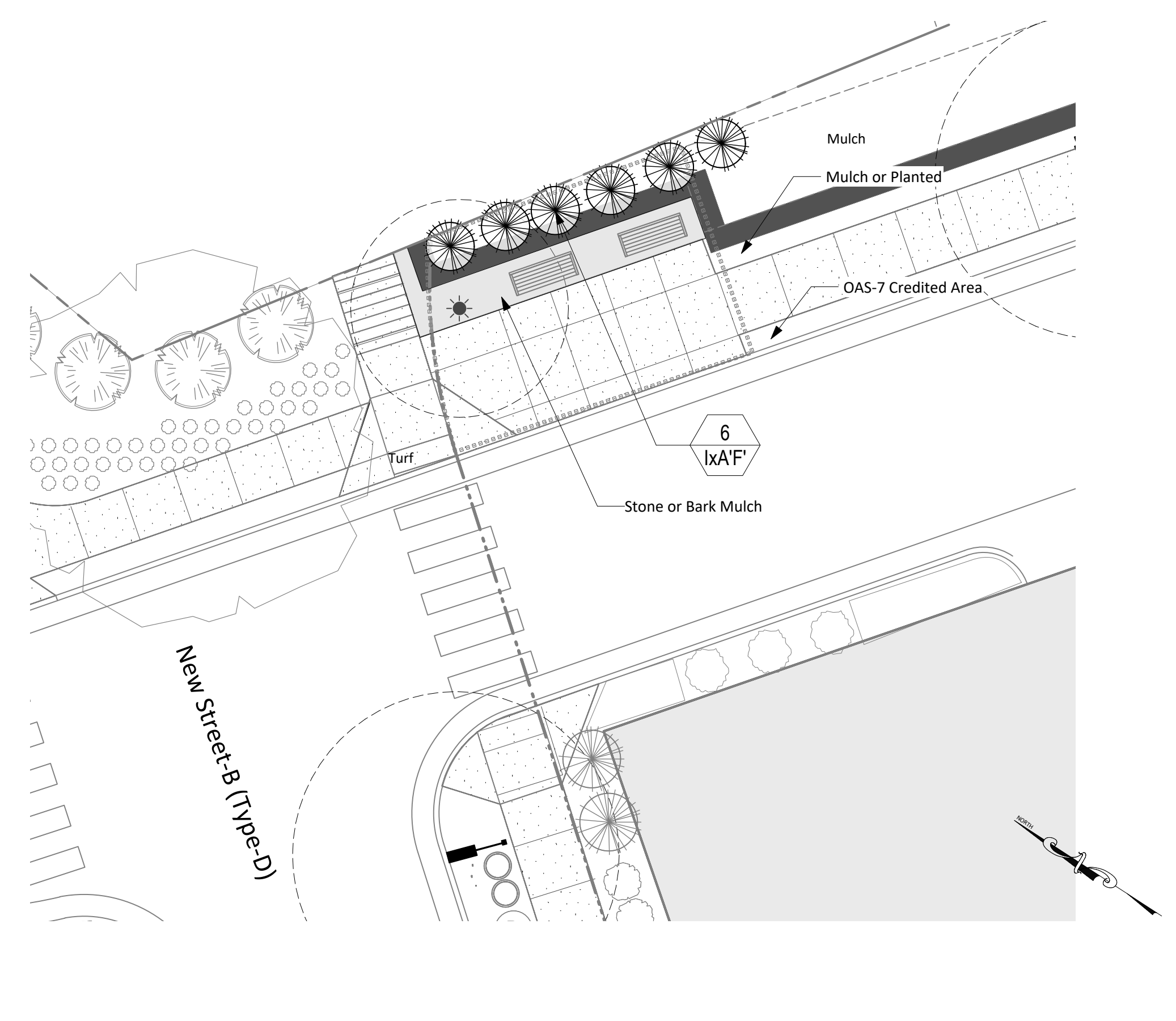
- General Notes**
- Contractor is responsible for all plants shown on plan regardless of quantities listed in schedule.
  - All areas noted as Turf shall be seeded or sodded at the owner's discretion. See Sheet CS7101 for Planting Specifications. Synthetic turf (DuPont ForeverLawn Select Synthetic Grass or equal) may be substituted for natural turf at the owner's discretion.
  - See Tree Protection Plan (sheet CS0503) for Limits of Disturbance and Tree Removal/Tree Save.
  - Note: Contractor to Provide & Install Coconut Fiber Mat per Manufacturer's Specifications For All Slopes Greater Than 3:1. Slopes in Excess of 3:1 Shall be Permanently Stabilized with Seeding Specifications Noted on Sheet CS7101 in Addition to any Plantings Shown. See Temporary Seeding, Erosion and Sediment Control Notes Sheet CS8501 for Temporary Seeding.
  - All shrub beds for parking lot or utility screening shall be 5'-0" or greater in width.
  - Canopy street tree substitutions are subject to CDC approval.
  - All tree plantings in turf areas shall include a 2.5' dia. (min.) mulch bed.
  - Optional Plantings, where provided, may be downsized or reduced in numbers at the developer's discretion. Approval of this plan sheet is for species and varieties only.
  - Species/Placement Restricted Due to Required Fire Access

**LEGEND - Streetscape**

- Street Light (Duke Energy)
- Pedestrian Light (Duke Energy)
- Area Light (Duke Energy)
- Bicycle Rack (Short-Term)
- Bicycle Locker (Long-Term)
- Park Bench
- Waste/Recycle Receptacles
- Planters
- Dog Station



**1** **OUTDOOR AMENITY SPACE-7 - LAYOUT**  
1" = 10'-0"



**2** **OUTDOOR AMENITY SPACE-7 - PLANTING**  
1" = 10'-0"

Scott Murray Land Planning, Inc.  
274 Botetourt Ct. Boydton, VA 23917  
252-213-9501 434-689-2925 (fax)  
www.stmlandplan.com  
smurray@stmlandplan.com

Project:

**Tarheel Lodging  
Redevelopment**  
Chapel Hill, North Carolina

Developer:

**Tarheel Lodging, LLC  
and  
Unicorn Group  
Fifteen, LLC**  
  
6110 Falconbridge Rd. ste. 200  
Chapel Hill, North Carolina 27517

Sheet Title:

**OAS-8  
Layout &  
Planting Plan**

3	2-1-23	Phase-II Revisions + COA approval of Design Alternates 11-22-22
2	n/a	not used
1	10-14-22	Phase-II Modifications OAS-8 Added
No.	Date:	Issue Notes:

*Limitations of Use and Liability Disclaimer - This document and all associated documents are provided for a specific site and the named Project only. In no event shall the Client or any third party copy or use any of the concepts, plans, drawings, specifications, designs, or other documents or data, document produced by the Consultant in connection with the Project (the "Instruments of Service") for any purpose other than those noted above or in relation to any project other than the named Project without the prior written permission of the Consultant. Liability arising from the use of these documents is limited to the scope of services fee agreed to in the Project Proposal Scope of Services.*

Scale:  
1" = 10'-0" @ D-Size  
Date:  
June 27, 2019  
Drawn By:  
STM  
Drawing No.:  
na

**CS2108**  
of

**OAS-8 Design Intent/Programming: Outdoor Amenity Space - 8 is intended to provide seating for pedestrians to "stop and rest awhile". It will also serve as a sitting area for residents and visitors that frequent the area for leashed pet exercise/relief activities.**

Plant List - OAS-8			Plant List		
ID	Common Name	Botanical Name	Qty	Scheduled Size	Remarks & Spacing
<b>Trees</b>					
Aa'AB'	Autumn Brilliance Serviceberry	Amelanchier x grandiflora 'Autumn Brilliance'	4	2.5" CAL.	Single-Stem   15' Mature Ht.
<b>Shrubs</b>					
Rx 'DKO'	Double Knock Out Rose (R)	Rosa x 'Double Knock Out' (R)	8	3' HT. 4' O.C.	
<b>Ground Cover</b>					
<b>Ornamental Grasses</b>					

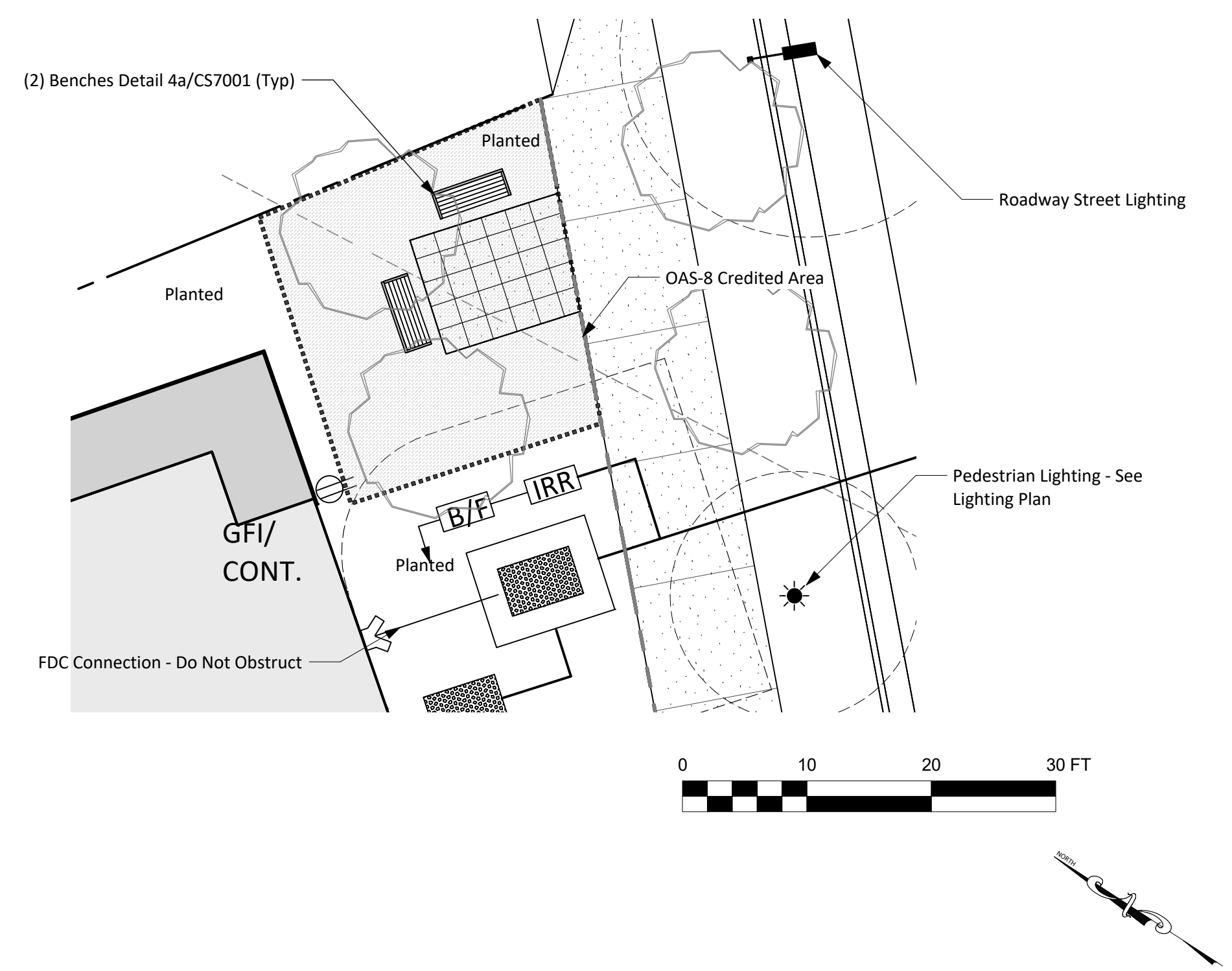
Plant List Note: Planting sincluded on the above Plant List are also shown on Sheet CS2202 Required Plantings.

**General Notes**

- Contractor is responsible for all plants shown on plan regardless of quantities listed in schedule.
- All areas noted as Turf shall be seeded or sodded at the owner's discretion. See Sheet CS7101 for Planting Specifications. Synthetic turf (DuPont ForeverLawn Select Synthetic Grass or equal) may be substituted for natural turf at the owner's discretion.
- See Tree Protection Plan (sheet CS0503) for Limits of Disturbance and Tree Removal/Tree Save.
- Note: Contractor to Provide & Install Coconut Fiber Mat per Manufacturer's Specifications For All Slopes Greater Than 3:1. Slopes in Excess of 3:1 Shall be Permanently Stabilized with Seeding Specifications Noted on Sheet CS7101 in Addition to any Plantings Shown. See Temporary Seeding, Erosion and Sediment Control Notes Sheet CS8501 for Temporary Seeding.
- All shrub beds for parking lot or utility screening shall be 5'-0" or greater in width.
- Canopy street tree substitutions are subject to CDC approval.
- All tree plantings in turf areas shall include a 2.5' dia. (min.) mulch bed.
- Optional Plantings, where provided, may be downsized or reduced in numbers at the developer's discretion. Approval of this plan sheet is for species and varieties only.
- Species/Placement Restricted Due to Required Fire Access

**LEGEND - Streetscape**

	Street Light (Duke Energy)
	Pedestrian Light (Duke Energy)
	Area Light (Duke Energy)
	Bicycle Rack (Short-Term)
	Bicycle Locker (Long-Term)
	Park Bench
	Waste/Recycle Receptacles
	Planters
	Dog Station



**1** **OUTDOOR AMENITY SPACE-7 - LAYOUT**  
1" = 10'-0"



**2** **OUTDOOR AMENITY SPACE-7 - PLANTING**  
1" = 10'-0"