



# Chapel Hill



# Public Works

# *OBRAS PÚBLICAS*



# Our Divisions / *Nuestras Divisiones.*



**ADMINISTRATION**  
*Administración*



**FACILITIES  
MANAGEMENT**  
*Gestión de las  
Instalaciones*



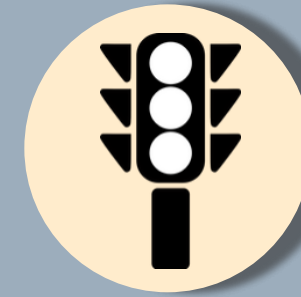
**SOLID WASTE**  
*Residuos Sólidos*



**ENGINEERING &  
DESIGN**  
*Ingeniería & Diseño*



**FLEET**  
*Flota de Vehículos*



**TRANSPORTATION  
ENGINEERING**  
*Ingeniería de  
Transporte*



**STORMWATER  
MANAGEMENT**  
*Gestión de  
Aguas Pluviales*

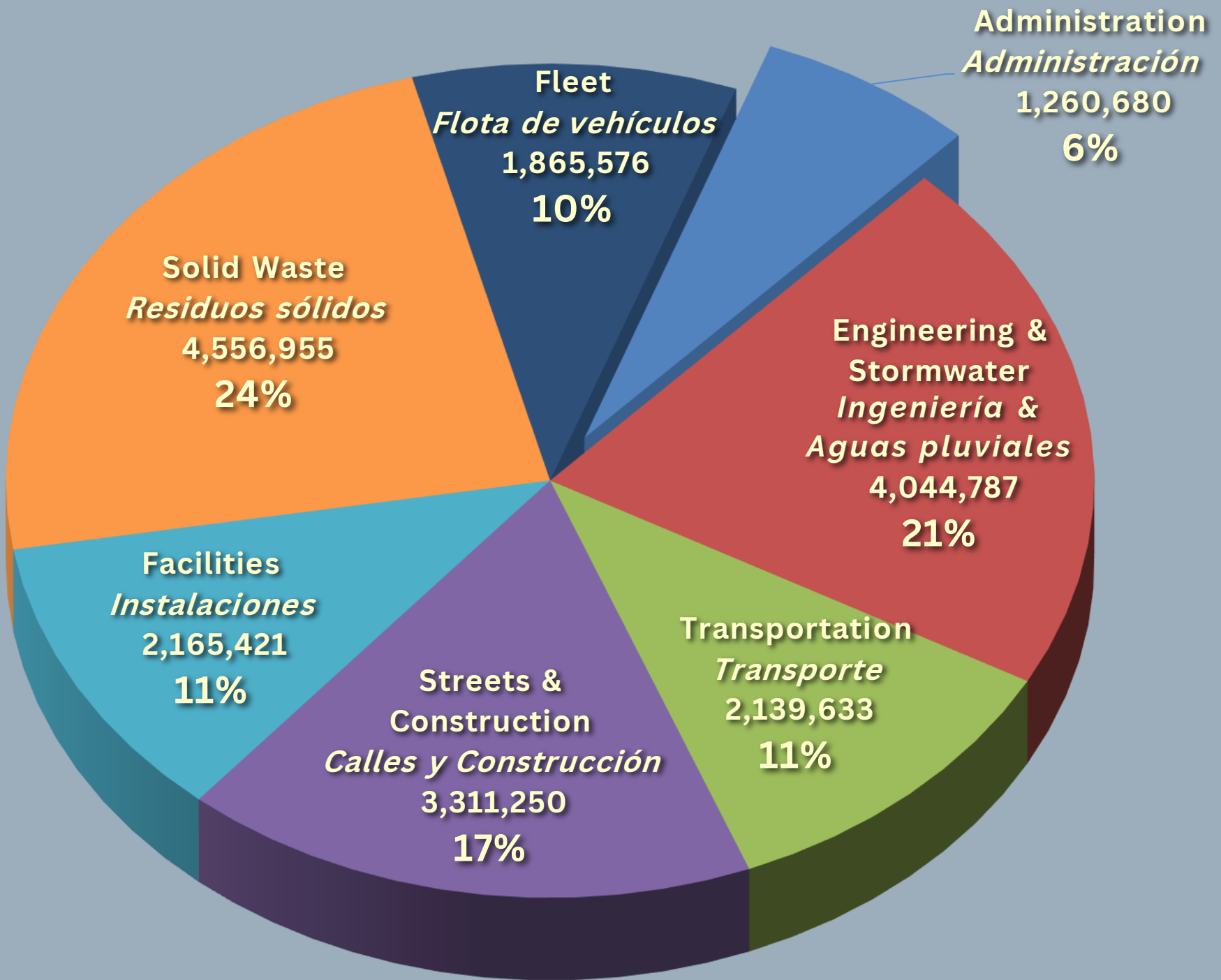


**STREETS &  
CONSTRUCTION**  
*Calles y Construcción*



# Annual Budget / *Presupuesto Anual*

\$19,344,302





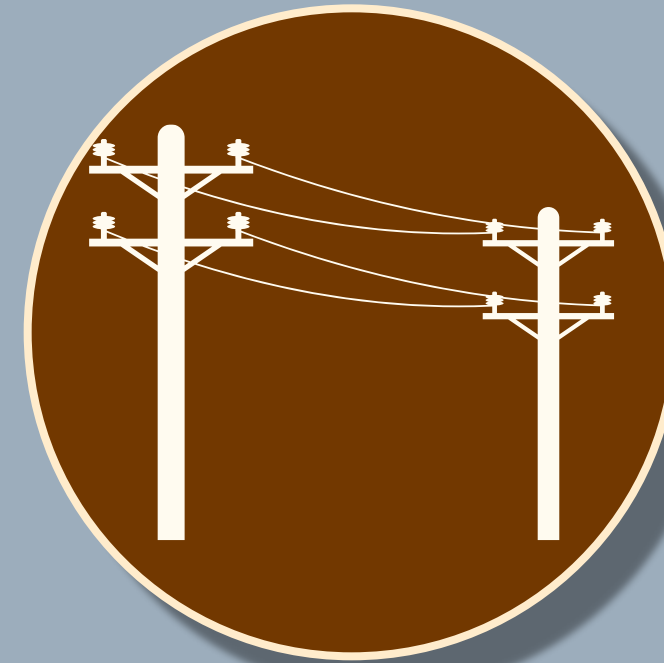
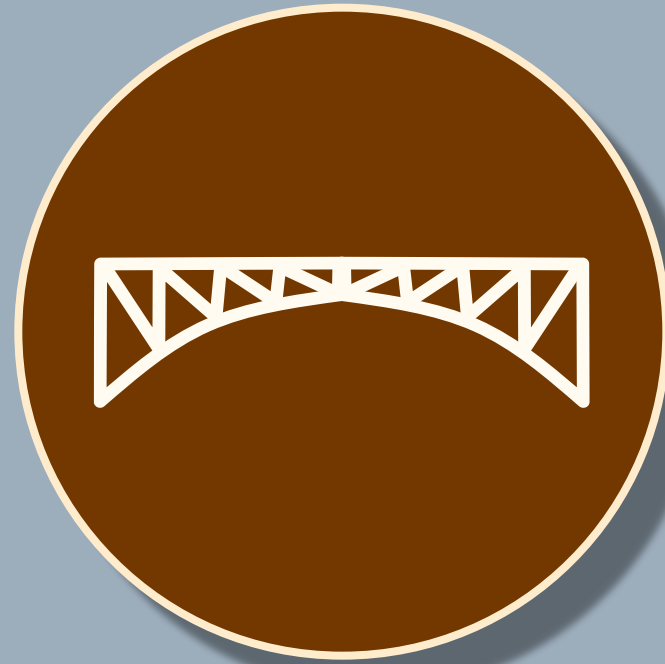
# Administration/*Administración*



A circular icon containing three interlocking gears.

# Engineering & Design/ *Ingeniería & Diseño*

---





# Stormwater Management/ *Gestión de Aguas Pluviales*





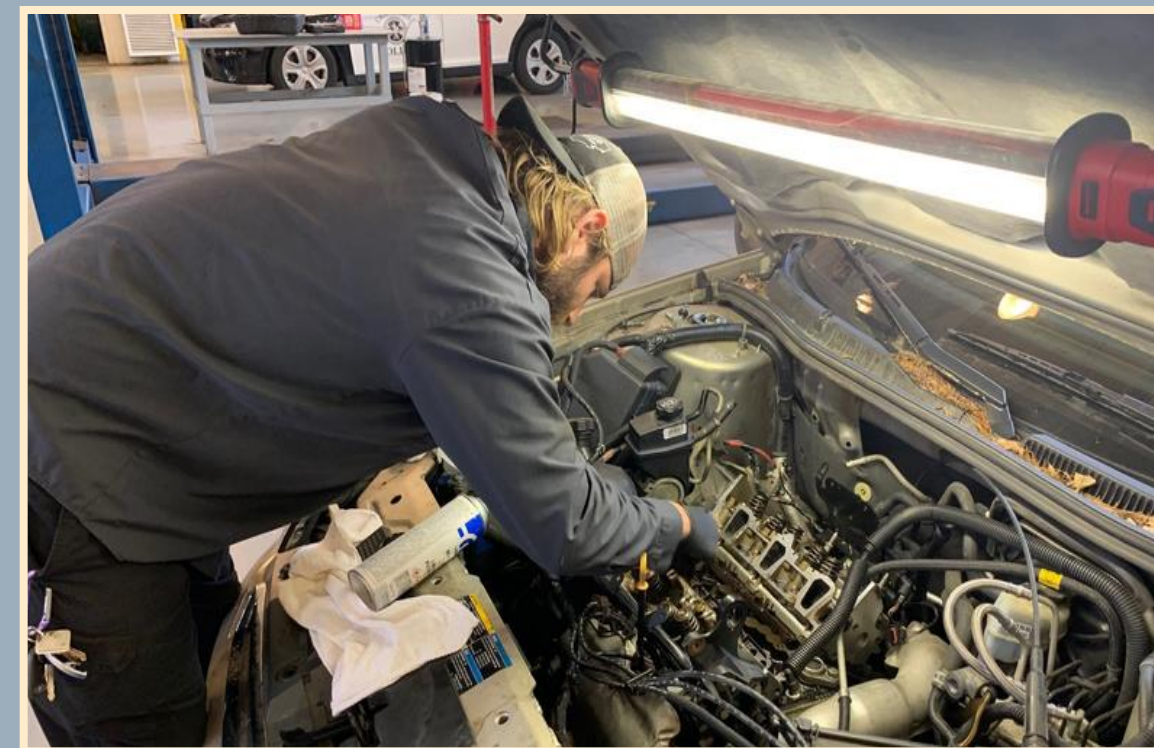
# Facilities Management

## *Gestión de las Instalaciones*





# Fleet/ Flota de Vehículos







# Streets & Construction/ *Calles y Construcción*



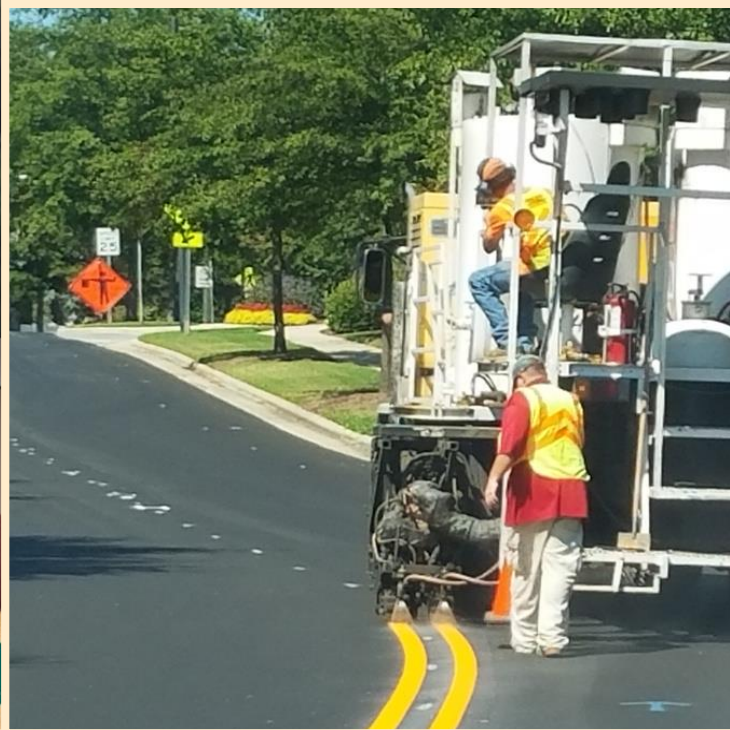


# Solid Waste/ *Residuos Sólidos*



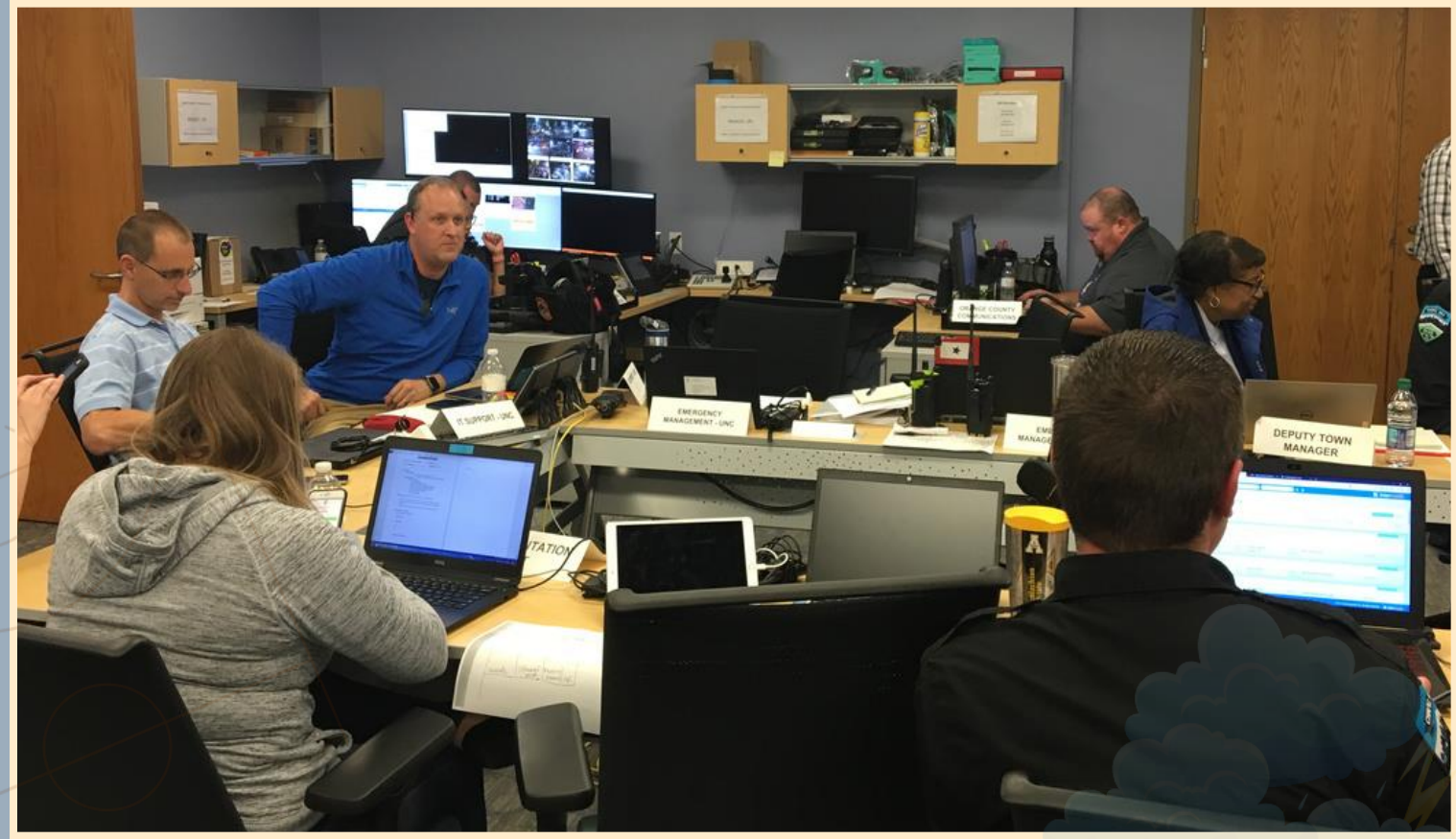


# Transportation Engineering/ *Ingeniería de Transporte*



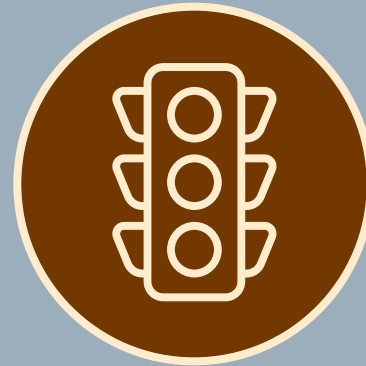


# Special Events/ *Eventos Especiales*



# Join the Team / *Únase al equipo*

---



**CONTACT US**  
*CONTÁCTENOS*

(919) 969-5100  
publicworks@townofchapelhill.org

**APPLY NOW /**  
*Presente su*  
*Solicitud*

