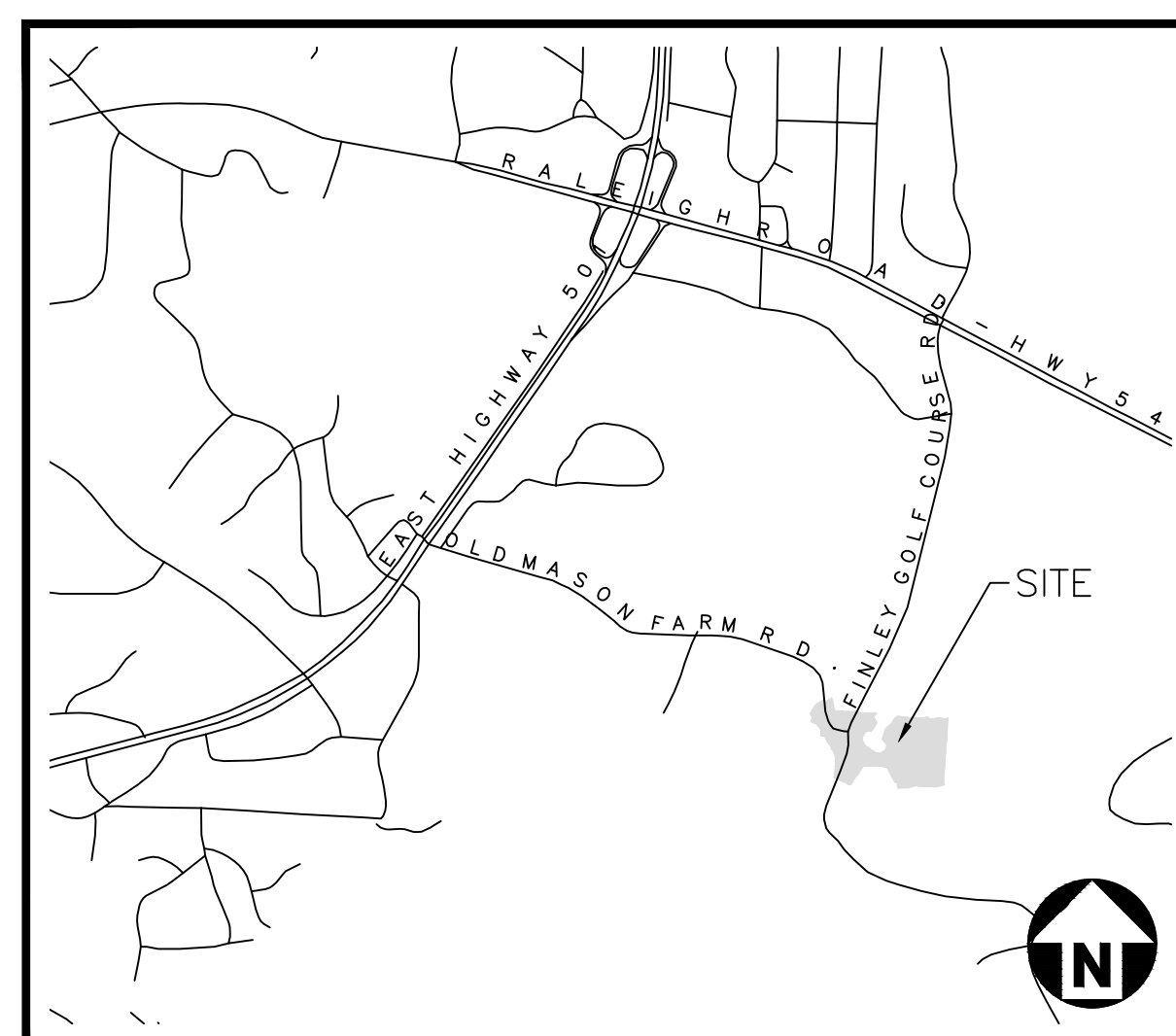


UNC CHAPEL HILL-GOLF TRAINING FACILITY

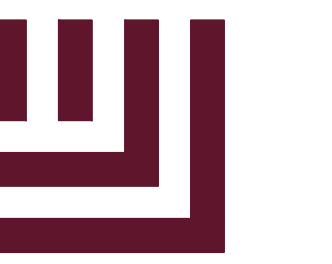
500 FINLEY GOLF COURSE ROAD
CHAPEL HILL, NORTH CAROLINA 27514

SPECIAL USE PERMIT
PROJECT NUMBER: UNC-22005
DATE: APRIL 19, 2024

SITE DATA	
PIN	979833326
SITE AREA	256.77 AC
PROJECT AREA	2.93 AC
ZONING	O1-2
WATERSHED OVERLAY	JORDAN LAKE WATERSHED PROTECTION DISTRICT
RIVER BASIN	CAPE FEAR BASIN
EXISTING USE	GOLF COURSE
PROPOSED USE	GOLF COURSE
BUILDING AREA	15,745 SF
BUILDING HEIGHT	36'10" (2-STORIES)
PARKING	22 SPACES (21 STD. / 1 ACC)
ACCESSIBLE PARKING	1 VAN SPACE



VICINITY MAP
N.T.S.



McADAMS

The John R. McAdams Company, Inc.
621 Hillsborough Street
Suite 500
Raleigh, NC 27603
phone 919.361.5000
fax 919.361.2269
license number: C-0293, C-187
www.mcadamsco.com

CONTACT

DANIEL WIDIS, PLA, ASLA
UNIVERSITY LANDSCAPE ARCHITECT
widis@unc.edu
PHONE: 704.526.5107
KODY TROWBRIDGE, PE
CIVIL ENGINEER
trowbridge@mcadamsco.com
PHONE: 912.230.7334

CLIENT

UNIVERSITY OF NORTH CAROLINA
AT CHAPEL HILL
DEPARTMENT OF ATHLETICS
220 FINLEY GOLF COURSE ROAD
CHAPEL HILL, NORTH CAROLINA 27517



PROJECT DIRECTORY

DEVELOPER
LINCOLN PROPERTY COMPANY
1730 VARSITY DRIVE SUITE 300
RALEIGH, NC 27606
PHONE: 919.215.4872
ARCHITECT
LSJP
227 W. TRADE STREET, SUITE 700
CHARLOTTE, NC 28202
PHONE: 704.371.7845

SHEET INDEX

C0.01	AREA MAP
C1.00	EXISTING CONDITIONS
C1.01	DEMOLITION PLAN
C1.10	STEEP SLOPES PLAN
C2.00	SITE PLAN
C2.10	SOLID WASTE PLAN
C3.00	GRADING AND STORM DRAINAGE PLAN
C4.00	UTILITY PLAN
C4.01	FIRE SAFETY PLAN
C8.00	SITE DETAILS
C8.01	WATER DETAILS
C8.02	SANITARY SEWER DETAILS
C8.03	STORM DRAINAGE DETAILS
C9.00	SCM 'A' PLAN
C9.01	SCM 'A' DETAILS
C9.02	SCM DETAILS
C9.03	SCM LANDSCAPE PLAN
L5.00	LANDSCAPE PROTECTION & TREE COVERAGE PLAN
L5.10	LANDSCAPE PLAN
A2.01	BUILDING ELEVATIONS
A2.02	BUILDING ELEVATIONS

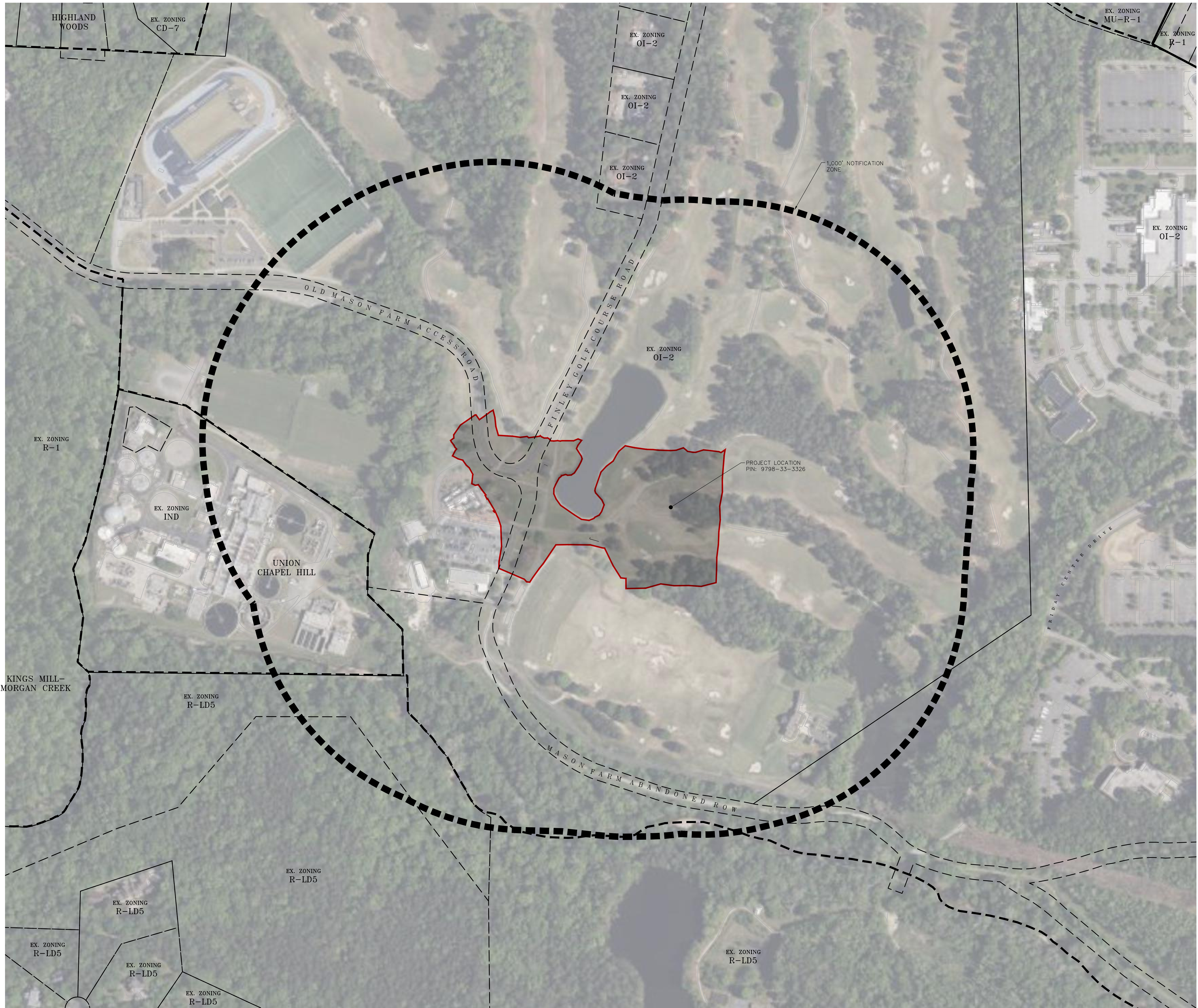


REVISIONS

NO. DATE

CONSTRUCTION DRAWINGS FOR:

UNC CHAPEL HILL-GOLF TRAINING FACILITY
SPECIAL USE PERMIT
CHAPEL HILL, NORTH CAROLINA
PROJECT NUMBER: UNC-22005



GENERAL NOTES

- 1. PIN'S AND PROPERTY INFORMATION FROM CHAPEL HILL/ORANGE COUNTY GIS.
- 2. BOUNDARY FROM ALTA SURVEY BY THE JOHN R. MCADAMS COMPANY COMPLETED 08/14/2020.

LEGEND

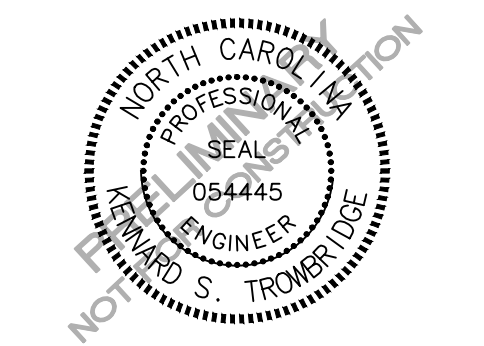
- 1,000' REQUIRED NOTIFICATION BOUNDARY
- PROJECT AREA
- APPROXIMATE ZONING DISTRICT LINE (INFORMATION FROM TOWN OF CHAPEL HILL GIS)

McADAMS
The John R. McAdams Company, Inc.
621 Hillsborough Street
Suite 500
Raleigh, NC 27603
phone 919.361.5000
fax 919.361.2269
license number: C-0293, C-187
www.mcadamsco.com

CLIENT
UNIVERSITY OF NORTH CAROLINA
AT CHAPEL HILL
DEPARTMENT OF ATHLETICS
220 FINLEY GOLF COURSE ROAD
CHAPEL HILL, NORTH CAROLINA 27517



UNC CHAPEL HILL-GOLF TRAINING FACILITY
SPECIAL USE PERMIT
500 FINLEY GOLF COURSE ROAD
CHAPEL HILL, NC 27514



REVISIONS

NO.	DATE

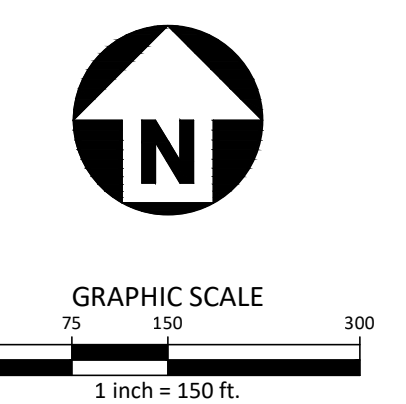
PLAN INFORMATION

PROJECT NO.	UNC-22005
FILENAME	UNC22005-AM1
CHECKED BY	KST
DRAWN BY	SME
SCALE	1" = 150'
DATE	04.19.2024

SHEET

AREA MAP

C0.01



M:\Projects\UNC\UNC22005\04 Production\Engineering\Construction Drawings\UNC22005-AM1.dwg, 4/19/2024 10:07:34 AM, Kelly Truesdell

PRELIMINARY DRAWING - NOT RELEASED FOR CONSTRUCTION



McADAMS

The John R. McAdams Company, Inc.
621 Hillsborough Street
Suite 500
Raleigh, NC 27603
phone 919.361.5000
fax 919.361.2269
license number: C-0293, C-187

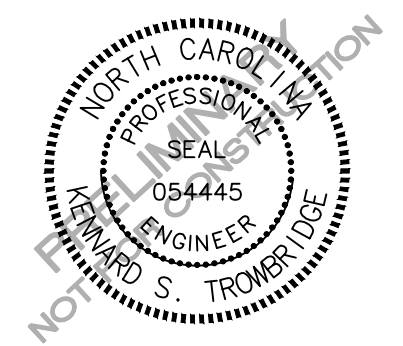
www.mcadamsco.com

CLIENT

UNIVERSITY OF NORTH CAROLINA
AT CHAPEL HILL
DEPARTMENT OF ATHLETICS
220 FINLEY GOLF COURSE ROAD
CHAPEL HILL, NORTH CAROLINA 27517



**UNC CHAPEL HILL-GOLF
TRAINING FACILITY
SPECIAL USE PERMIT
500 FINLEY GOLF COURSE ROAD
CHAPEL HILL, NC 27514**



REVISIONS

NO. DATE

PLAN INFORMATION

PROJECT NO. UNC-22005
FILENAME UNC22005-XC1
CHECKED BY KST
DRAWN BY SME
SCALE 1" = 40'
DATE 04.19.2024

SHEET

**EXISTING CONTIDIONS
PLAN**

C1.00

LEGEND

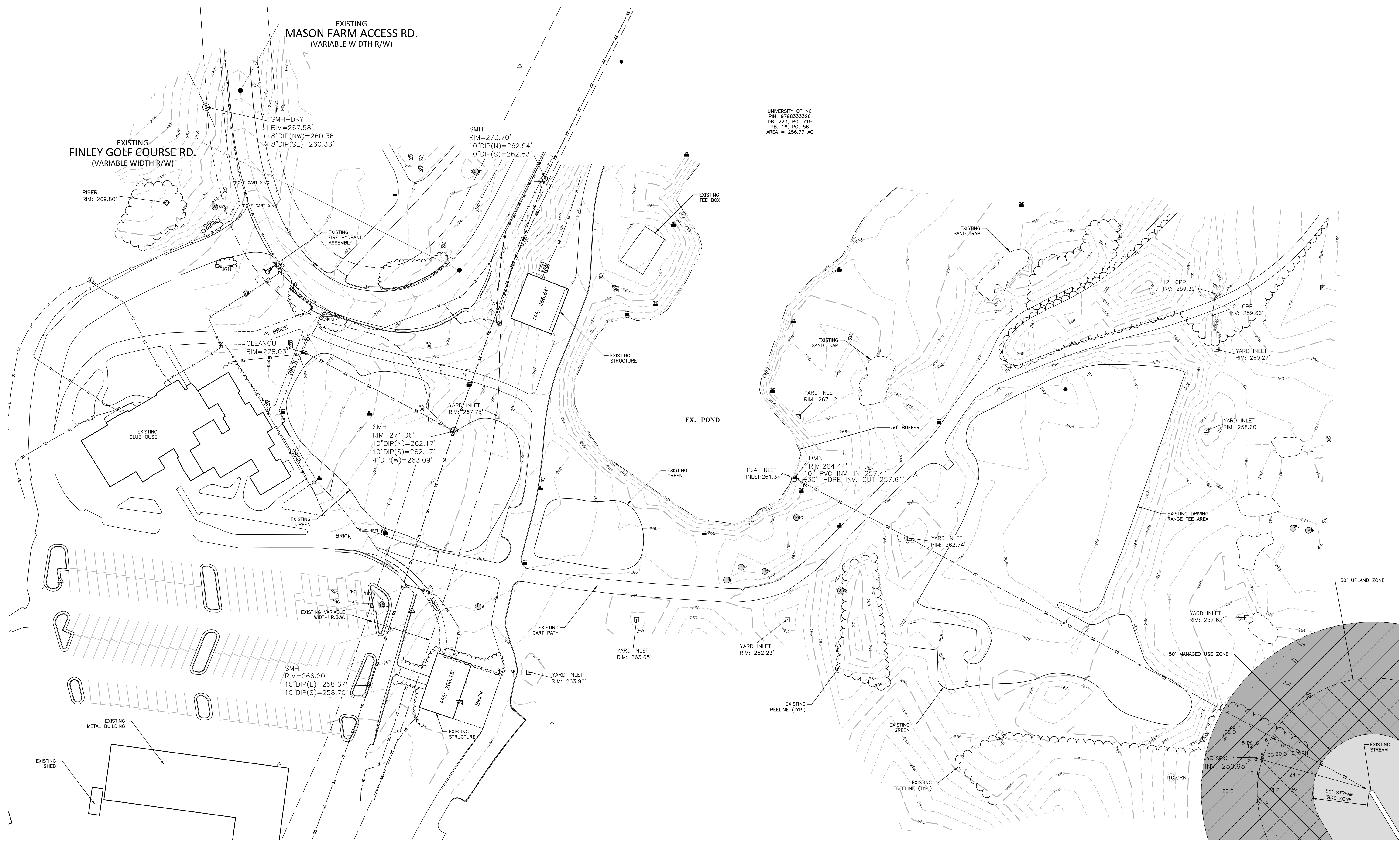
● EXISTING IRON PIPE	⊠ MAIL BOX
○ IRON PIPE SET	⊗ MONITORING WELL
▲ CALCULATED POINT	⊕ SIAMSESE CONNECTION
⊖ BORE HOLE	→ SIGN
⊙ SANITARY SEWER MANHOLE	⊗ WELL
⊙ SANITARY SEWER CLEANOUT	⊗ WATER MANHOLE
⊙ WATER VALVE	○ LIGHT SINGLE
⊙ WATER METER	□ LIGHT DOUBLE
⊕ FIRE HYDRANT	⊠ CABLE BOX
⊠ TELEPHONE PEDESTAL	⊕ FIBER OPTIC VAULT
⊙ TELEPHONE MANHOLE	⊕ SPRINKLER HEAD
⊠ ELECTRIC BOX	—SD— STORM DRAIN PIPE
⊕ LIGHT POLE	—OU— OVERHEAD UTILITY LINES
⊕ POWER POLE	—W— WATER LINE
⊠ CURB INLET	—SS— SANITARY SEWER LINE
⊕ STORM DRAINAGE MANHOLE	—T— TELEPHONE LINE
□ YARD INLET	—G— GAS LINE
⊕ AIR CONDITIONER	—UE— UNDERGROUND ELECTRIC
⊠ ADDRESS BOX	—UT— UNDERGROUND TELEPHONE
● BOLLARD	—X—X— FENCE LINE
⊕ FIRE CONNECTION	
⊕ FIBER OPTIC MARKER	
⊕ GREASE PIT	
⊕ ACCESSIBLE PARKING	
⊕ IRRIGATION CONTROL VALVE	
⊕ FLOOD LIGHT	

TREE LEGEND

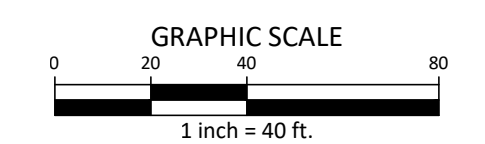
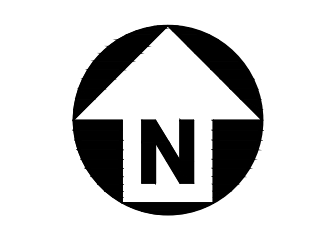
⊕ AC	AMERICAN ELM
⊕ BK	BLACK GUM
⊕ B	BIRCH
⊕ CH	CHERRY
⊕ CR	CRAPE MYRTLE
⊕ CA	CRAB APPLE
⊕ DG	DOGWOOD
⊕ HO	HOLLY
⊕ MG	MAGNOLIA
⊕ M	MAPLE
⊕ RO	RED OAK
⊕ O	OAK
⊕ P	PINE
⊕ R	REDBUD
⊕ SP	SPRUCE
⊕ OR	ORNAMENTAL
⊕ C	CALIPER INCH SIZE OF TREE
⊕ T	TYPE OF TREE
⊕ D	D FOR DOUBLE, T FOR TRIPLE

SURVEY NOTES:

1. THE INFORMATION SHOWN IS PER A TOPOGRAPHIC SURVEY DATED FEBRUARY 28, 2024 BY McADAMS.
2. BEARINGS FOR THIS SURVEY ARE BASED ON NC GRID NAD83(2011).
3. ALL DISTANCES ARE HORIZONTAL GROUND DISTANCES.
4. AREA BY COORDINATE GEOMETRY.
5. FLOOD NOTE: THIS PROPERTY IS NOT LOCATED IN A SPECIAL FLOOD HAZARD ZONE. IT IS LOCATED IN ZONE "X" AS DEFINED BY F.E.M.A. 1.1.6.M TOWN OF CHAPEL HILL COMMUNITY PANEL #37507800, DATED 10-19-2016.
6. REFERENCES: DEED BOOK 223 PG. 719 OF THE ORANGE COUNTY REGISTRY, PIN: 979833326
7. UTILITY STATEMENT
THE UNDERGROUND UTILITIES SHOWN HAVE BEEN LOCATED FROM FIELD SURVEY INFORMATION AND EXISTING DRAWINGS. THE SURVEYOR MAKES NO GUARANTEE THAT THE UNDERGROUND UTILITIES SHOWN COMPRISE ALL SUCH UTILITIES IN THE AREA, EITHER IN SERVICE OR ABANDONED. THE SURVEYOR FURTHER DOES NOT WARRANT THAT THE UNDERGROUND UTILITIES SHOWN ARE IN THE EXACT LOCATION INDICATED ALTHOUGH HE DOES CERTIFY THAT THEY ARE LOCATED AS ACCURATELY AS POSSIBLE FROM INFORMATION AVAILABLE. THE SURVEYOR HAS NOT PHYSICALLY LOCATED THE UNDERGROUND UTILITIES.
8. THIS SURVEY PERFORMED AND MAP PREPARED WITHOUT BENEFIT OF A TITLE REPORT. THIS SURVEY SUBJECT TO ANY FACTS AND EASEMENTS WHICH MAY BE DISCLOSED BY A FULL AND ACCURATE TITLE SEARCH.



UNIVERSITY OF NC
PIN: 979833326
DB: 223, PG: 719
RS: 16, PG: 36
AREA = 256.77 AC



M:\Projects\UNC\UNC22005\04_Production\Engineering\Construction Drawings\UNC22005-XC1.dwg, 4/19/2024, 10:08:04 AM, kst, Trowbridge



McAdams

The John R. McAdams Company, Inc.
621 Hillsborough Street
Suite 500
Raleigh, NC 27603
phone 919.361.5000
fax 919.361.2269
license number: C-0293, C-187

www.mcadamsco.com

CLIENT

UNIVERSITY OF NORTH CAROLINA
AT CHAPEL HILL
DEPARTMENT OF ATHLETICS
220 FINLEY GOLF COURSE ROAD
CHAPEL HILL, NORTH CAROLINA 27517



UNC CHAPEL HILL-GOLF
TRAINING FACILITY
SPECIAL USE PERMIT
500 FINLEY GOLF COURSE ROAD
CHAPEL HILL, NC 27514



REVISIONS

NO. DATE

PLAN INFORMATION

PROJECT NO. UNC-22005
FILENAME UNC22005-DM1
CHECKED BY KST
DRAWN BY SME
SCALE 1" = 40'
DATE 04.19.2024

SHEET

DEMOLITION PLAN

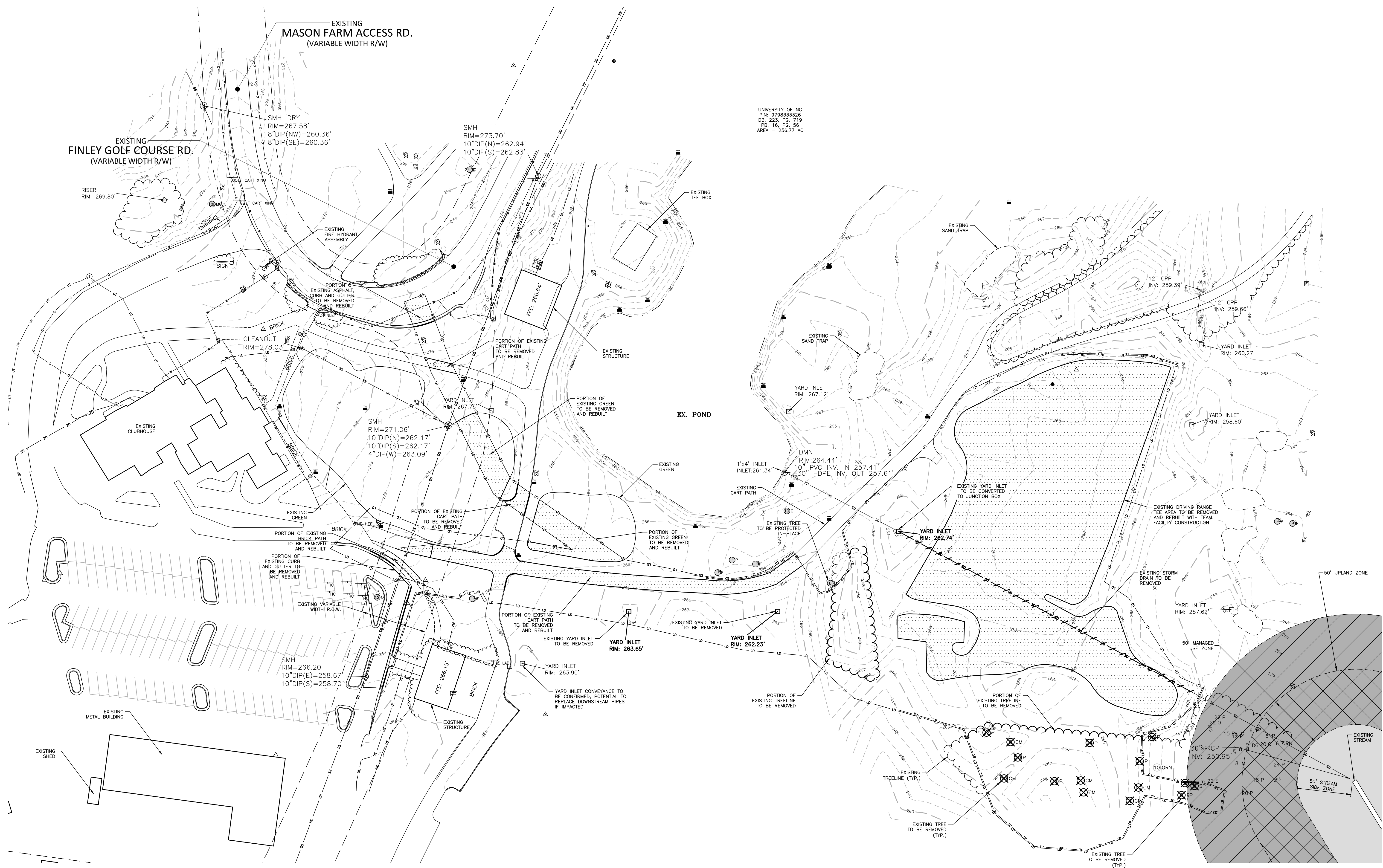
C1.01

LEGEND	
●	EXISTING IRON PIPE
○	IRON PIPE SET
▲	CALCULATED POINT
○	BORE HOLE
⊙	SANITARY SEWER MANHOLE
⊙	SANITARY SEWER CLEANOUT
⊙	WATER VALVE
⊙	WATER METER
⊙	FIRE HYDRANT
⊙	TELEPHONE PEDESTAL
⊙	TELEPHONE MANHOLE
⊙	ELECTRIC BOX
⊙	LIGHT POLE
⊙	POWER POLE
⊙	CURB INLET
⊙	STORM DRAINAGE MANHOLE
⊙	AIR INLET
⊙	AIR CONDITIONER
⊙	ADDRESS BOX
⊙	BOLLARD
⊙	FIRE CONNECTION
⊙	FIBER OPTIC MARKER
⊙	GREASE PIT
⊙	ACCESSIBLE PARKING
⊙	IRRIGATION CONTROL VALVE
⊙	FLOOD LIGHT
⊙	MAIL BOX
⊙	MONITORING WELL
⊙	SIAMSESE CONNECTION
⊙	SIGN
⊙	WELL
⊙	WATER MANHOLE
⊙	LIGHT SINGLE
⊙	LIGHT DOUBLE
⊙	CABLE BOX
⊙	FIBER OPTIC VAULT
⊙	SPRINKLER HEAD
⊙	STORM DRAIN PIPE
⊙	OVERHEAD UTILITY LINES
⊙	WATER LINE
⊙	SANITARY SEWER LINE
⊙	TELEPHONE LINE
⊙	GAS LINE
⊙	UNDERGROUND ELECTRIC
⊙	UNDERGROUND TELEPHONE
⊙	FENCE LINE

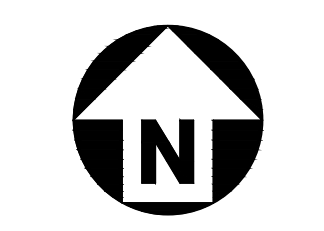
TREE LEGEND	
⊙	AMERICAN ELM
⊙	BLACK GUM
⊙	BIRCH
⊙	CHERRY
⊙	CRAB MYRTLE
⊙	CRAB APPLE
⊙	DOGWOOD
⊙	HOLLY
⊙	MAGNOLIA
⊙	MAPLE
⊙	RED OAK
⊙	OAK
⊙	PINE
⊙	REDBUD
⊙	SPRUCE
⊙	ORNAMENTAL
⊙	CALIPER INCH SIZE OF TREE
⊙	TYPE OF TREE
⊙	⊙ FOR DOUBLE, T FOR TRIPLE

DEMOLITION LEGEND	
⊙	TREE OR OTHER VEGETATION TO BE REMOVED
⊙	UNDERGROUND UTILITY TO BE REMOVED
⊙	AREA TO BE REMOVED (SIDEWALK, CURB AND GUTTER, STRUCTURES, ASPHALT, CONCRETE PAVING, ETC.)

NOTE: SEE PLAN FOR DETAILED DEMOLITION PROCEDURES, SEQUENCING AND SPECIFICATIONS.



UNIVERSITY OF NC
PIN: 9708533326
DB: 223, PG: 719
PS: 16, PG: 36
AREA = 256.77 AC



GRAPHIC SCALE
1 inch = 40 ft.

M:\Projects\UNC\UNC22005\4. Production\Engineering\Construction Drawings\UNC22005-DM1.dwg, 4/19/2024, 10:08:14 AM, KST, 1/28/2024



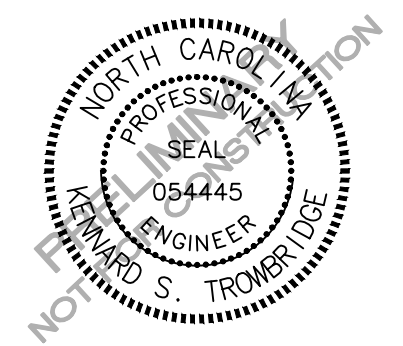
McADAMS

The John R. McAdams Company, Inc.
621 Hillsborough Street
Suite 500
Raleigh, NC 27603
phone 919.361.5000
fax 919.361.2269
license number: C-0293, C-187
www.mcadamsco.com

CLIENT
UNIVERSITY OF NORTH CAROLINA
AT CHAPEL HILL
DEPARTMENT OF ATHLETICS
220 FINLEY GOLF COURSE ROAD
CHAPEL HILL, NORTH CAROLINA 27517



**UNC CHAPEL HILL-GOLF
TRAINING FACILITY
SPECIAL USE PERMIT**
500 FINLEY GOLF COURSE ROAD
CHAPEL HILL, NC 27514



REVISIONS
NO. DATE

PLAN INFORMATION
PROJECT NO. UNC-22005
FILENAME UNC22005-551
CHECKED BY KST
DRAWN BY SME
SCALE 1" = 40'
DATE 04.19.2024

SHEET
STEEP SLOPES PLAN

C1.10

LEGEND

● EXISTING IRON PIPE	⊠ MAIL BOX
○ IRON PIPE SET	⊗ MONITORING WELL
▲ CALCULATED POINT	⊕ SIAMSESE CONNECTION
⊖ BORE HOLE	→ SIGN
⊙ SANITARY SEWER MANHOLE	⊙ WELL
⊙ SANITARY SEWER CLEANOUT	⊙ WATER MANHOLE
⊙ WATER VALVE	○ LIGHT SINGLE
⊙ WATER METER	□ LIGHT DOUBLE
⊙ FIRE HYDRANT	⊖ CABLE BOX
⊙ TELEPHONE PEDESTAL	⊙ FIBER OPTIC VAULT
⊙ TELEPHONE MANHOLE	⊙ SPRINKLER HEAD
⊙ ELECTRIC BOX	—SD— STORM DRAIN PIPE
⊙ CURB INLET	—OU— OVERHEAD UTILITY LINES
⊙ STORM DRAINAGE MANHOLE	—W— WATER LINE
□ YARD INLET	—SS— SANITARY SEWER LINE
⊙ AIR CONDITIONER	—T— TELEPHONE LINE
⊙ ADDRESS BOX	—G— GAS LINE
● BOLLARD	—UE— UNDERGROUND ELECTRIC
⊙ FIRE CONNECTION	—UT— UNDERGROUND TELEPHONE
⊙ FIBER OPTIC MARKER	—X—X— FENCE LINE
⊙ GREASE PIT	
⊙ ACCESSIBLE PARKING	
⊙ IRRIGATION CONTROL VALVE	
⊙ FLOOD LIGHT	

TREE LEGEND

⊙ AC	AMERICAN ELM
⊙ BG	BLACK GUM
⊙ B	BIRCH
⊙ CH	CHERRY
⊙ CM	CRAPE MYRTLE
⊙ CA	CRAB APPLE
⊙ DG	DOGWOOD
⊙ HO	HOLLY
⊙ MG	MAGNOLIA
⊙ M	MAPLE
⊙ RO	RED OAK
⊙ O	OAK
⊙ P	PINE
⊙ R	REDBUD
⊙ SP	SPRUCE
⊙ ORN	ORNAMENTAL

○ CALIPER INCH SIZE OF TREE
○ TYPE OF TREE
○ FOR DOUBLE, T FOR TRIPLE

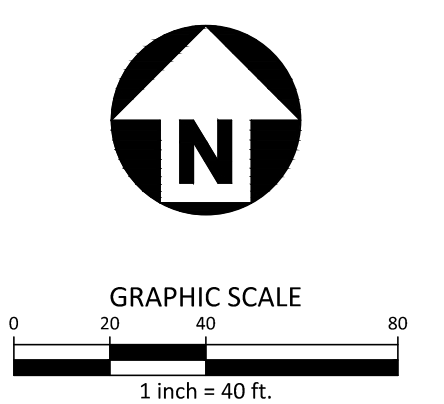
EXISTING STEEP SLOPE LEGEND

□	SLOPES 0% - 10% (1.37 AC DISTURBED)
▒	SLOPES 10% - 15% (0.57 AC DISTURBED)
▓	SLOPES 15% - 25% (0.74 AC DISTURBED)
⊘	SLOPES >25% (0.24 AC DISTURBED)

STEEP SLOPES > 25% IMPACTED BY THE CONSTRUCTION OF THIS DEVELOPMENT:
10,454 SF, 0.24 AC

LIMITS OF DISTURBANCE = 2.93 AC
OVERALL SITE AREA = 256.77 AC

THE OVERALL PERCENTAGE OF EXISTING SLOPES > 25% IMPACTED BY THIS DEVELOPMENT IS ESTIMATED TO BE BETWEEN 1%-5% GIVEN THE LIMITS OF DISTURBANCE RELATIVE TO THE OVERALL SITE AREA.



M:\Projects\UNC\UNC22005\04_Production\Engineering\Construction Drawings\UNC22005-551.dwg, 4/19/2024, 10:10:39 AM, kst

PRELIMINARY DRAWING - NOT RELEASED FOR CONSTRUCTION