

McAdams

The John R. McAdams Company, Inc.  
621 Hillsborough Street  
Suite 500  
Raleigh, NC 27603  
phone 919.361.5000  
fax 919.361.2269  
license number: C-0293, C-187

www.mcadamsco.com

CLIENT

UNIVERSITY OF NORTH CAROLINA  
AT CHAPEL HILL  
DEPARTMENT OF ATHLETICS  
220 FINLEY GOLF COURSE ROAD  
CHAPEL HILL, NORTH CAROLINA 27517



UNC CHAPEL HILL-GOLF  
TRAINING FACILITY  
SPECIAL USE PERMIT  
500 FINLEY GOLF COURSE ROAD  
CHAPEL HILL, NC 27514



REVISIONS

NO. DATE

PLAN INFORMATION

PROJECT NO. UNC-22005  
FILENAME UNC22005-51  
CHECKED BY KST  
DRAWN BY SME  
SCALE 1" = 40'  
DATE 04.19.2024

SHEET

SITE PLAN

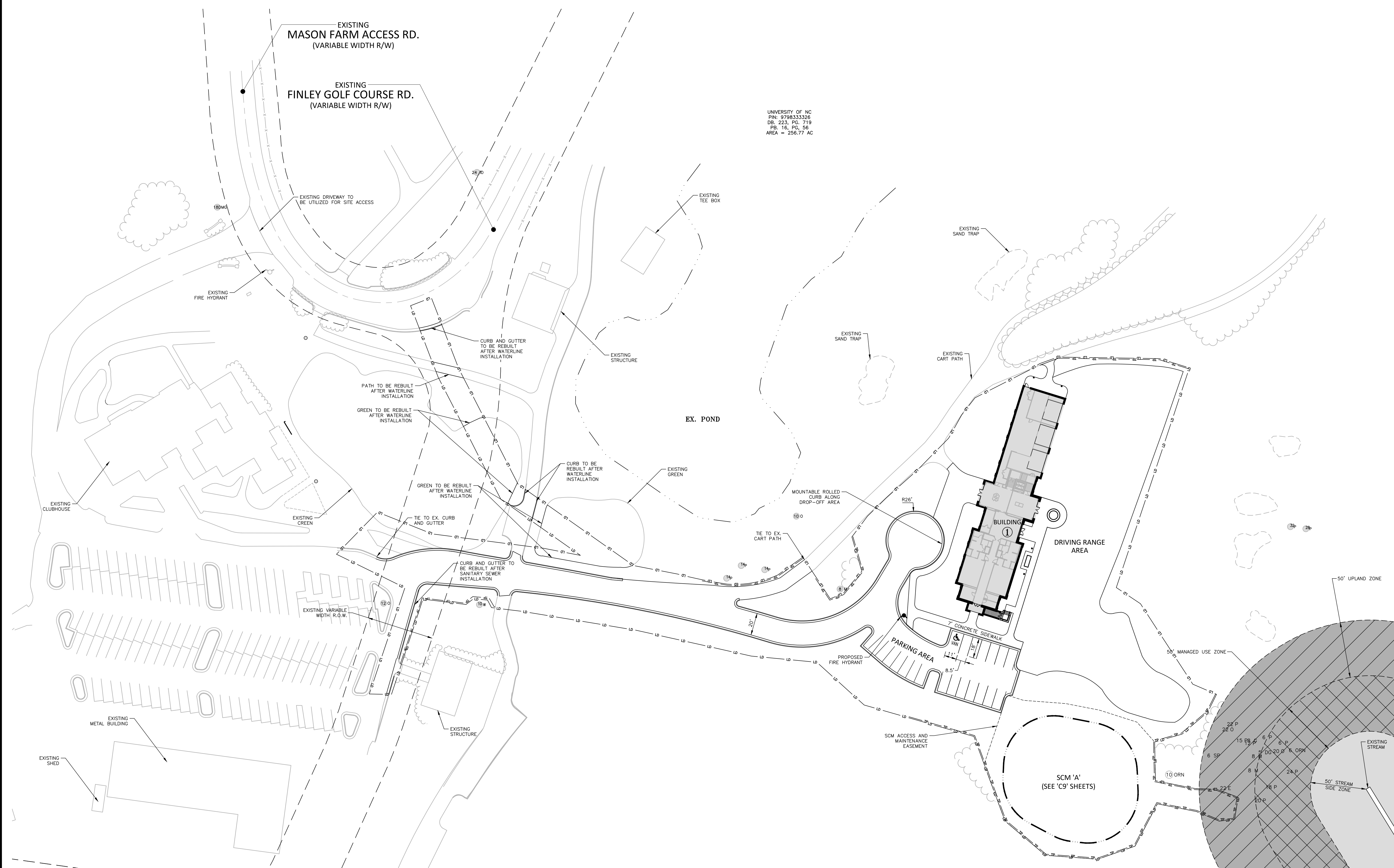
C2.00

SITE LEGEND

- SIGNAGE
- YARD LIGHTS
- LIGHT POLE
- POWER POLE
- TRAFFIC DIRECTIONAL ARROW
- ACCESSIBLE PARKING STALL
- VAN ACCESSIBLE PARKING STALL
- PARKING SPACE COUNT
- ACCESSIBLE RAMP
- ACCESSIBLE ROUTE
- PHASE LINE
- PROPERTY LINE
- RIGHT-OF-WAY LINE
- LOT LINE
- EASEMENT LINE
- CENTERLINE
- HEAVY DUTY ASPHALT PAVEMENT

SITE DATA:

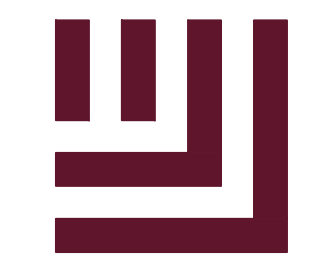
BUILDING FOOTPRINT AREA = 15,745 SF  
PROPOSED IMPERVIOUS SURFACE = 0.84 AC



UNIVERSITY OF NC  
PIN: 0790333326  
DB: 223, PC: 719  
PB: 16, PG: 56  
AREA = 256.77 AC

P:\Projects\2024\UNC22005\51\Production\Drawings\Construction\Drawings\UNC22005-51.dwg, 04/19/2024 10:08:54 AM, KST, TROMB





**McAdams**

The John R. McAdams Company, Inc.  
621 Hillsborough Street  
Suite 500  
Raleigh, NC 27603  
phone 919.361.5000  
fax 919.361.2269  
license number: C-0293, C-187

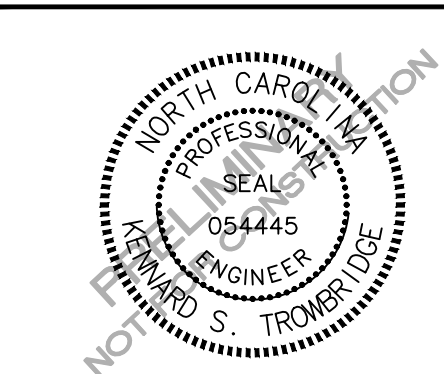
www.mcadamsco.com

**CLIENT**

UNIVERSITY OF NORTH CAROLINA  
AT CHAPEL HILL  
DEPARTMENT OF ATHLETICS  
220 FINLEY GOLF COURSE ROAD  
CHAPEL HILL, NORTH CAROLINA 27517



**UNC CHAPEL HILL-GOLF  
TRAINING FACILITY  
SPECIAL USE PERMIT**  
500 FINLEY GOLF COURSE ROAD  
CHAPEL HILL, NC 27514



**REVISIONS**

NO. DATE

**PLAN INFORMATION**

PROJECT NO. UNC-22005  
FILENAME UNC22005-SW1  
CHECKED BY KST  
DRAWN BY SME  
SCALE 1" = 40'  
DATE 04.19.2024

**SHEET**

**SOLID WASTE PLAN**

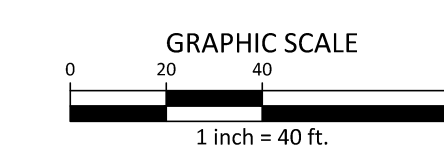
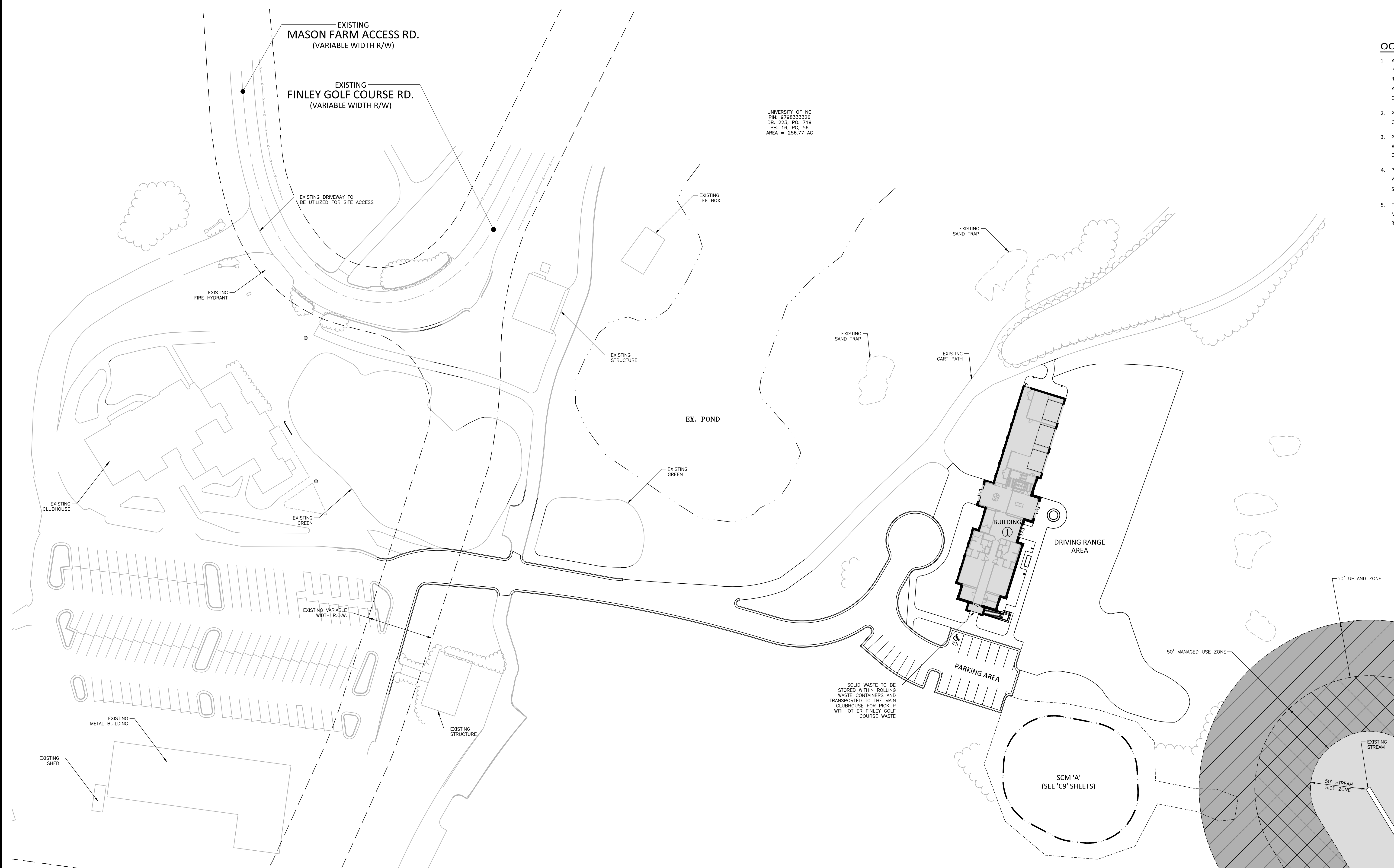
**C2.10**

**SITE LEGEND**

	SIGNAGE
	YARD LIGHTS
	LIGHT POLE
	POWER POLE
	TRAFFIC DIRECTIONAL ARROW
	VAN ACCESSIBLE PARKING STALL
	PARKING SPACE COUNT
	ACCESSIBLE RAMP
	TYPE A
	TYPE B
	ACCESSIBLE ROUTE
	PHASE LINE
	PROPERTY LINE
	RIGHT-OF-WAY LINE
	LOT LINE
	EASEMENT LINE
	CENTERLINE
	HEAVY DUTY ASPHALT PAVEMENT

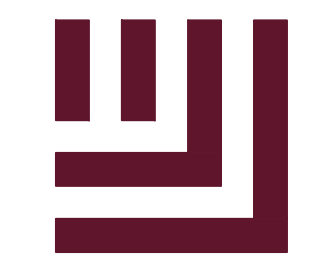
**OCSW CONSTRUCTION WASTE REQUIREMENTS:**

1. ALL EXISTING STRUCTURES 500 SQUARE FEET AND LARGER SHALL BE ASSESSED PRIOR TO THE ISSUANCE OF A DEMOLITION PERMIT TO ENSURE COMPLIANCE WITH THE COUNTY'S REGULATED RECYCLABLE MATERIALS ORDINANCE (RRMO) AND TO ASSESS THE POTENTIAL FOR DECONSTRUCTION AND/OR THE REUSE OF SALVAGEABLE MATERIALS. CONTACT THE ORANGE COUNTY SW ENFORCEMENT OFFICER AT (919) 968-2788 TO ARRANGE FOR THE ASSESSMENT.
2. PURSUANT TO THE COUNTY'S RRMO, CLEAN WOOD WASTE, SCRAP METAL, AND CORRUGATED CARDBOARD PRESENT IN CONSTRUCTION OR DEMOLITION WASTE MUST BE RECYCLED.
3. PURSUANT TO THE COUNTY'S RRMO, ALL HAULERS OF MIXED CONSTRUCTION AND DEMOLITION WASTE WHICH INCLUDES ANY REGULATED RECYCLABLE MATERIALS SHALL BE LICENSED BY ORANGE COUNTY.
4. PRIOR TO ANY DEMOLITION OR CONSTRUCTION ACTIVITY ON THE SITE, THE APPLICANT SHALL HOLD A PRE-DEMOLITION/PRE-CONSTRUCTION CONFERENCE WITH SOLID WASTE STAFF. THIS MAY BE THE SAME PRE-CONSTRUCTION MEETING HELD WITH OTHER DEVELOPMENT/ENFORCEMENT OFFICIALS.
5. THE PRESENCE IF ANY ASBESTOS CONTAINING MATERIALS ('ACM') AND/OR OTHER HAZARDOUS MATERIALS SHALL BE HANDLED IN ACCORDANCE WITH ANY AND ALL LOCAL, STATE, AND FEDERAL REGULATIONS AND GUIDELINES.



M:\Projects\UNC\22005\22005-04-Pre\Drawings\Construction\Drawings\UNC22005-SW1.dwg, 04/19/2024, 03:27:03 AM, ssmc, 1/20/2024





McAdams

The John R. McAdams Company, Inc.  
621 Hillsborough Street  
Suite 500  
Raleigh, NC 27603  
phone 919.361.5000  
fax 919.361.2269  
license number: C-0293, C-187

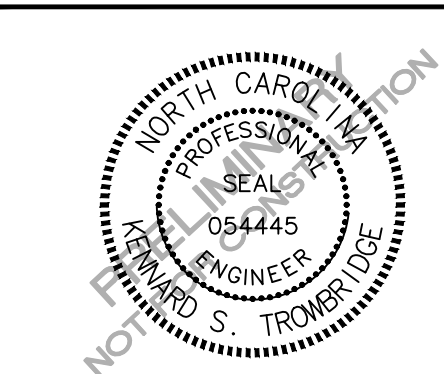
www.mcadamsco.com

CLIENT

UNIVERSITY OF NORTH CAROLINA  
AT CHAPEL HILL  
DEPARTMENT OF ATHLETICS  
220 FINLEY GOLF COURSE ROAD  
CHAPEL HILL, NORTH CAROLINA 27517



UNC CHAPEL HILL-GOLF  
TRAINING FACILITY  
SPECIAL USE PERMIT  
500 FINLEY GOLF COURSE ROAD  
CHAPEL HILL, NC 27514



REVISIONS

NO. DATE

PLAN INFORMATION

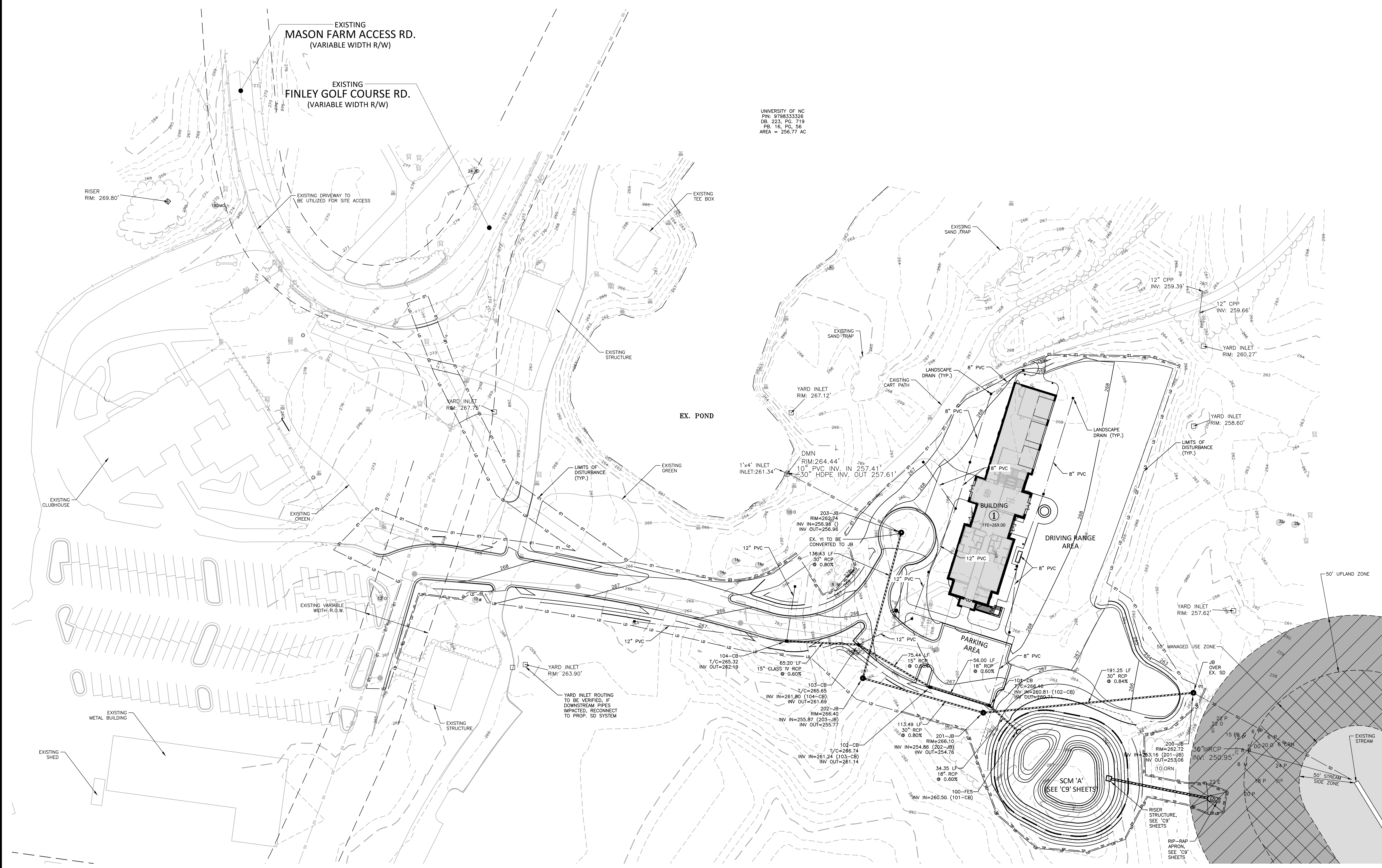
PROJECT NO. UNC-22005  
FILENAME UNC22005-61  
CHECKED BY KST  
DRAWN BY SME  
SCALE 1" = 40'  
DATE 04.19.2024

SHEET

GRADING AND STORM  
DRAINAGE PLAN  
**C3.00**

GRADING LEGEND

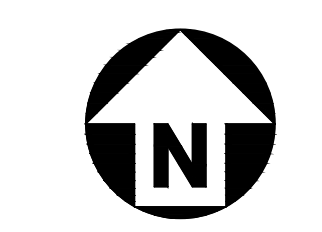
- FLARED END SECTION
- ENDWALL SECTION
- CATCH BASIN
- DROP INLET
- STORM SERVICE INLET
- STORM SERVICE ROOF- DRAIN
- JUNCTION BOX
- DRAINAGE FLOW ARROW
- LINE BREAK SYMBOL
- TOP & BOTTOM CURB ELEVATIONS
- TOP OF WALL ELEVATION
- BOTTOM OF WALL ELEVATION  
(NOTE: BOTTOM OF WALL IS GROUND ELEVATION NOT WALL FOUNDATION)
- SPOT ELEVATION
- STORM DRAINAGE
- STORM SERVICE LINE
- ROOF DRAIN, 8" ADS  
NON-PERFORATED TUBING OR  
EQUAL, 1.0% MIN. SLOPE 3' MIN.  
COVER PVC SCHEDULE 40 IN  
TRAFFIC AREAS
- TREE PROTECTION FENCE
- LIMITS OF DISTURBANCE
- WOODED AREA
- MAJOR CONTOUR
- MINOR CONTOUR
- EXISTING MAJOR CONTOUR
- EXISTING MINOR CONTOUR
- EASEMENT LINE
- ACCESSIBLE PARKING AREA  
(2% MAX. SLOPE IN ALL DIRECTIONS)



UNIVERSITY OF NC  
PIN: 979633326  
DB: 223, PC: 719  
FB: 16, PG: 56  
AREA = 256.77 AC

100-FES	200-JB
777-262.29	RM=262.72
INV IN=260.50 (101-CB)	INV IN=253.16 (201-JB)
	INV OUT=253.06
101-CB	201-JB
T/C=265.46	RM=266.10
INV IN=260.81 (102-CB)	INV IN=254.86 (202-JB)
INV OUT=260.71	INV OUT=254.76
102-CB	202-JB
T/C=266.74	RM=268.40
INV IN=261.24 (103-CB)	INV IN=255.87 (203-JB)
INV OUT=261.14	INV OUT=255.77
103-CB	203-JB
T/C=265.65	RM=267.74
INV IN=261.80 (104-CB)	INV IN=256.96 ( )
INV OUT=261.69	INV OUT=256.96
104-CB	
T/C=265.32	
INV OUT=262.19	

STORM PIPE TABLE							
PIPE	UPSTREAM STRUCTURE	UPSTREAM INVERT	DOWNSTREAM STRUCTURE	DOWNSTREAM INVERT	SIZE	MATERIAL	LENGTH SLOPE
100-101	101-CB	260.71	100-FES	260.50	18"	RCP	34.35 LF 0.60%
101-102	102-CB	261.14	101-CB	260.81	18"	RCP	56.00 LF 0.60%
102-103	103-CB	261.69	102-CB	261.24	15"	RCP	75.44 LF 0.60%
103-104	104-CB	262.19	103-CB	261.80	15"	CLASS IV RCP	65.20 LF 0.60%
STORM PIPE TABLE							
PIPE	UPSTREAM STRUCTURE	UPSTREAM INVERT	DOWNSTREAM STRUCTURE	DOWNSTREAM INVERT	SIZE	MATERIAL	LENGTH SLOPE
200-201	201-JB	254.76	200-JB	253.16	30"	RCP	191.25 LF 0.84%
201-202	202-JB	255.77	201-JB	254.86	30"	RCP	113.49 LF 0.80%
202-203	203-JB	256.96	202-JB	255.87	30"	RCP	136.43 LF 0.80%
203-EX		257.61	203-JB	256.96	30"	RCP	116.09 LF 0.56%
EX-200	200-JB	253.06		250.95	30"	RCP	163.43 LF 1.29%



GRAPHIC SCALE  
0 20 40 80  
1 inch = 40 ft.

PRELIMINARY DRAWING - NOT RELEASED FOR CONSTRUCTION





McAdams

The John R. McAdams Company, Inc.  
621 Hillsborough Street  
Suite 500  
Raleigh, NC 27603  
phone 919.361.5000  
fax 919.361.2269  
license number: C-0293, C-187

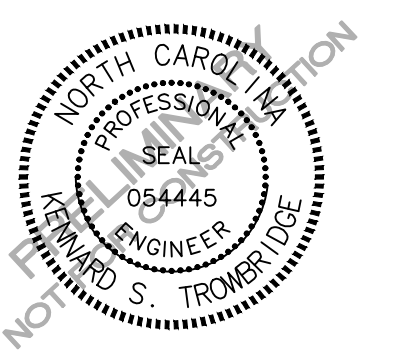
www.mcadamsco.com

CLIENT

UNIVERSITY OF NORTH CAROLINA  
AT CHAPEL HILL  
DEPARTMENT OF ATHLETICS  
220 FINLEY GOLF COURSE ROAD  
CHAPEL HILL, NORTH CAROLINA 27517



UNC CHAPEL HILL-GOLF  
TRAINING FACILITY  
SPECIAL USE PERMIT  
500 FINLEY GOLF COURSE ROAD  
CHAPEL HILL, NC 27514



REVISIONS

NO. DATE

PLAN INFORMATION

PROJECT NO. UNC-22005  
FILENAME UNC22005-U1  
CHECKED BY KST  
DRAWN BY SME  
SCALE 1" = 40'  
DATE 04.19.2024

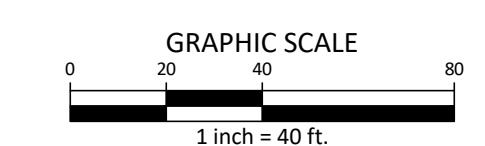
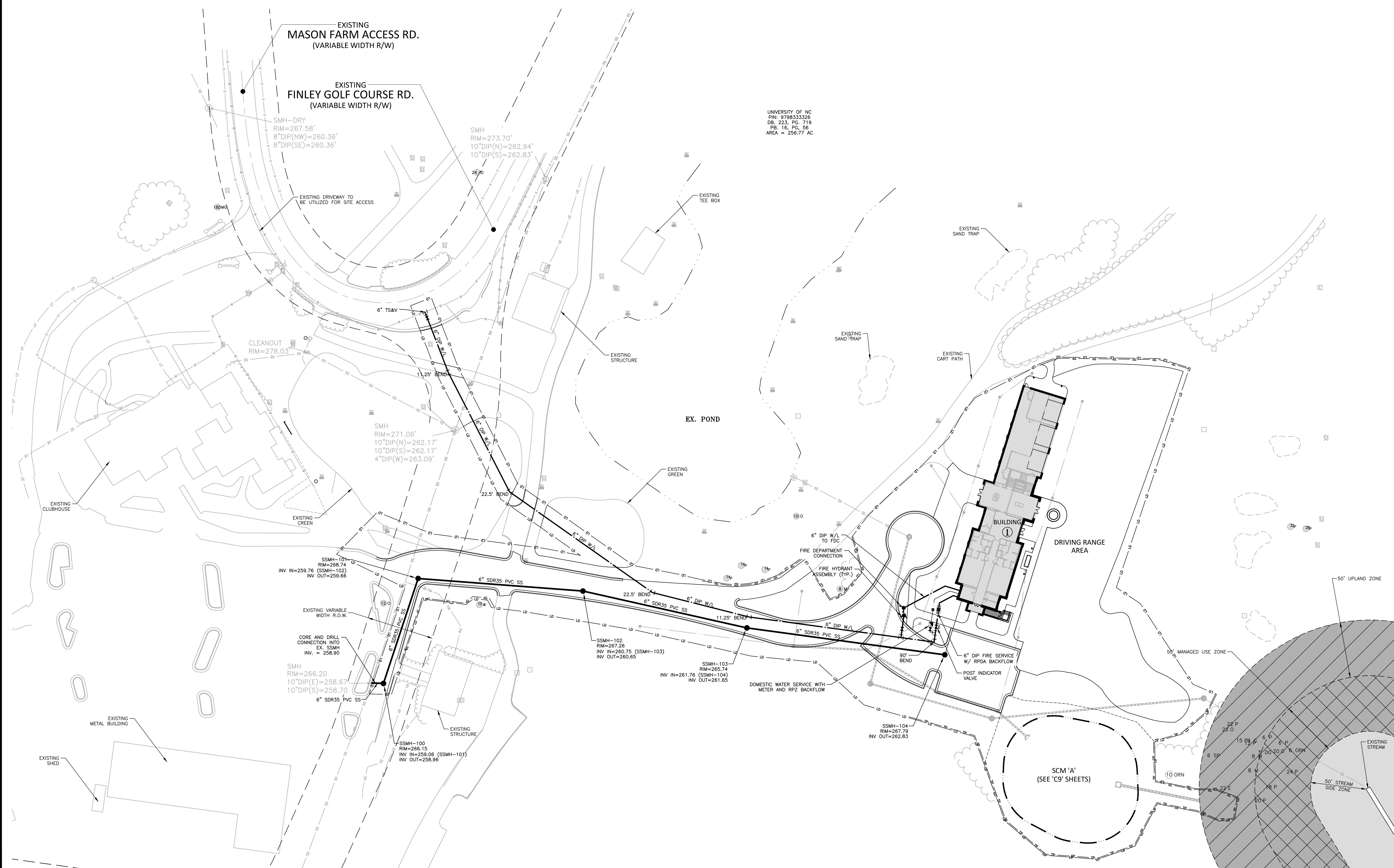
SHEET

UTILITY PLAN

C4.00

UTILITY LEGEND

- FIRE HYDRANT ASSEMBLY
- FIRE DEPARTMENT CONNECTION (FDC)
- WATER METER
- WATER VALVE
- POST INDICATOR VALVE
- VALVE IN MANHOLE
- METER & VAULT
- BACKFLOW PREVENTER
- REDUCER
- PLUG
- BLOW-OFF ASSEMBLY
- SANITARY SEWER MANHOLE
- SEWER CLEAN-OUT
- GREASE TRAP
- SEWER FLOW DIRECTION ARROW
- YARD LIGHTS
- LIGHT POLE
- POWER POLE
- LINE BREAK SYMBOL
- WATERLINE
- WATER SERVICE LINE
- UTILITY SLEEVE
- SANITARY SEWER
- SEWER SERVICE LINE
- SEWER FORCE MAIN
- GAS LINE
- OVERHEAD UTILITY
- UNDERGROUND ELECTRIC
- TELEPHONE
- EASEMENT LINE



PRELIMINARY DRAWING - NOT RELEASED FOR CONSTRUCTION

C:\Users\jmcadams\OneDrive\Documents\Projects\2022\20220419\UNC22005-U1.dwg, 4/19/2024 2:09:03 PM, KST, Tumbler





**McAdams**

The John R. McAdams Company, Inc.  
621 Hillsborough Street  
Suite 500  
Raleigh, NC 27603  
phone 919.361.5000  
fax 919.361.2269  
license number: C-0293, C-187

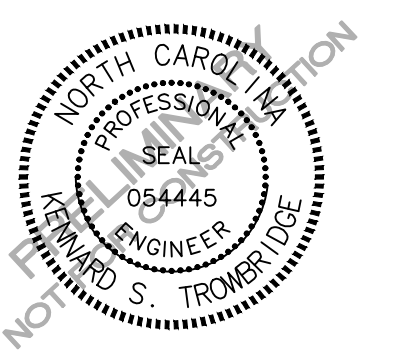
www.mcadamsco.com

**CLIENT**

UNIVERSITY OF NORTH CAROLINA  
AT CHAPEL HILL  
DEPARTMENT OF ATHLETICS  
220 FINLEY GOLF COURSE ROAD  
CHAPEL HILL, NORTH CAROLINA 27517



**UNC CHAPEL HILL-GOLF  
TRAINING FACILITY**  
SPECIAL USE PERMIT  
500 FINLEY GOLF COURSE ROAD  
CHAPEL HILL, NC 27514



**REVISIONS**

NO. DATE

**PLAN INFORMATION**

PROJECT NO. UNC-22005  
FILENAME UNC22005-FS1  
CHECKED BY KST  
DRAWN BY SME  
SCALE 1" = 40'  
DATE 04.19.2024

**SHEET**

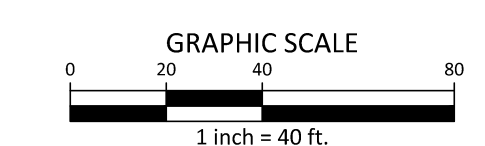
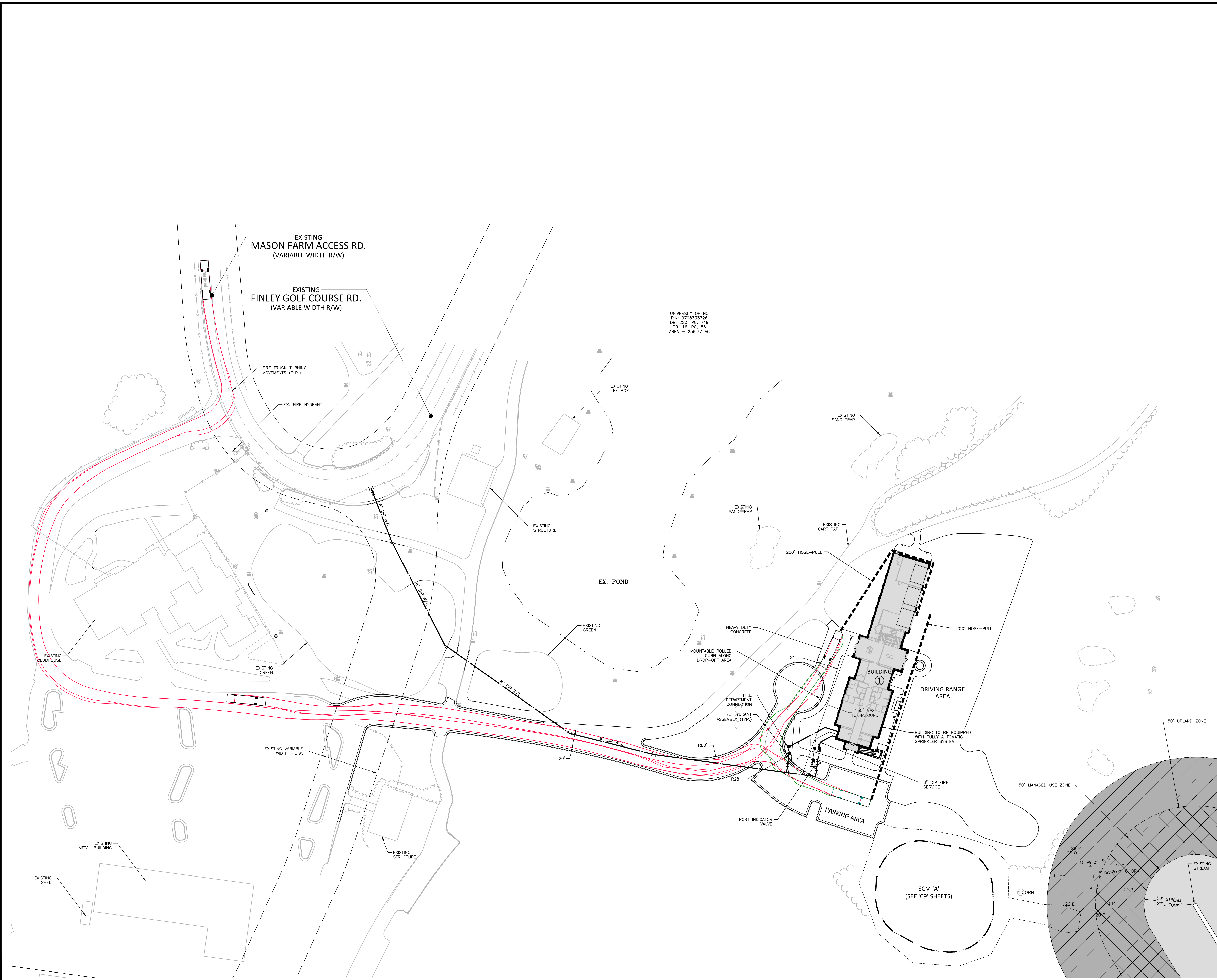
**FIRE SAFETY PLAN**

**C4.10**

**UTILITY LEGEND**

- FIRE HYDRANT ASSEMBLY
- FIRE DEPARTMENT CONNECTION (FDC)
- WATER METER
- WATER VALVE
- POST INDICATOR VALVE
- VALVE IN MANHOLE
- METER & VAULT
- BACKFLOW PREVENTER
- REDUCER
- PLUG
- BLOW-OFF ASSEMBLY
- SANITARY SEWER MANHOLE
- SEWER CLEAN-OUT
- GREASE TRAP
- SEWER FLOW DIRECTION ARROW
- YARD LIGHTS
- LIGHT POLE
- POWER POLE
- LINE BREAK SYMBOL
- WATERLINE
- WATER SERVICE LINE
- UTILITY SLEEVE
- SANITARY SEWER
- SEWER SERVICE LINE
- SEWER FORCE MAIN
- GAS LINE
- OVERHEAD UTILITY
- UNDERGROUND ELECTRIC
- TELEPHONE
- EASEMENT LINE

UNIVERSITY OF NC  
PIN: 0798333326  
DB: 2025, PC: 719  
PB: 16, PG: 56  
AREA = 256.77 AC



PRELIMINARY DRAWING - NOT RELEASED FOR CONSTRUCTION

\\p01dev01\unc\22005\FS1\Drawings\Construction\Drawings\Current\Drawings\UNC22005-FS1.dwg, 07/20/2024 10:10:39 AM, K. Smith, 1/28/2024