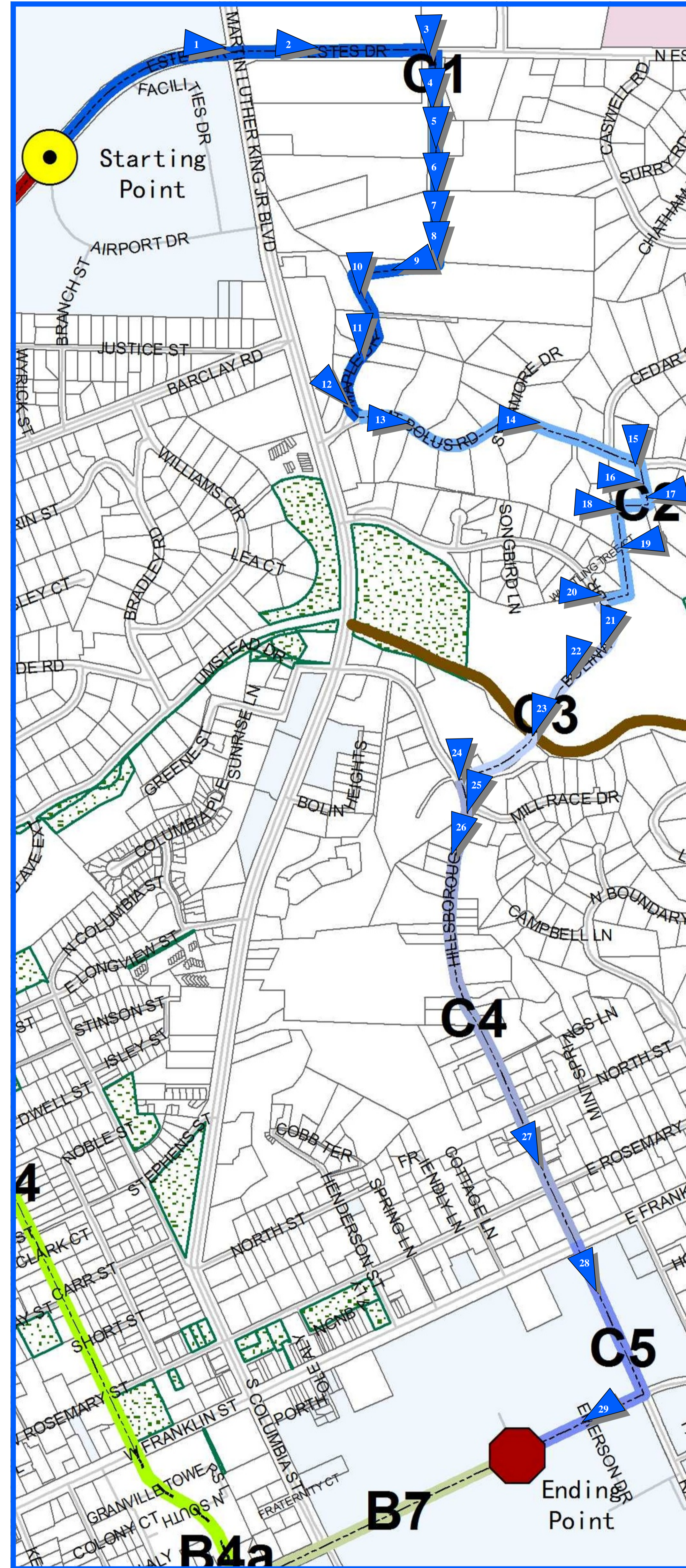


Campus To Campus

Route C (Comments from April 15, 2010 Workshop)



Estimated distance for Route C is 2.80 Miles (14799.61 feet).

Comments:
 Still need Bike/Ped friendly on MLK
 Consider pedes from path through these properties to Bolin - along small creek
 Don't see how Hillsborough could be made safe for cyclists
 Hillsborough steep and narrow and to dangerous



1. C1 - Intersection of Estes Dr/Estes Dr. Extension/at MLK - looking east.



2. C1 - Estes Dr. heading east (church to right) - narrow asphalt sidewalk separated from the road. No sidewalk on north side of Estes.



3. C1 - Duke Power easement at Estes Dr. - looking south.



4. C1 - Duke Power easement at back of Y property - looking south.



5. C1 - Duke power easement - continuing south - steep slopes down to creek at bottom.



6. C1 - Duke Power easement where it crosses a small creek



7. C1 - Duke Power easement continuing south - steep slope back up (Mt. Bolus).



8. C1 - Duke power easement turns west towards MLK (treated as a part of neighbor's yard).



9. C1 - Duke Power Easement continues to MLK - our route turns south (towards Maple drive). In foreground is a neighbor's driveway - Maple Dr. ends as a driveway



10. C1 - Route heads south on Maple Drive - no sidewalks



11. C1 - Route Heads south on Maple Drive



12. C1/C2 - Intersection of Maple and Mt. Bolus Drive (red car is turning onto MLK Boulevard) - our route turns away from MLK and proceeds east on Mt. Bolus Drive



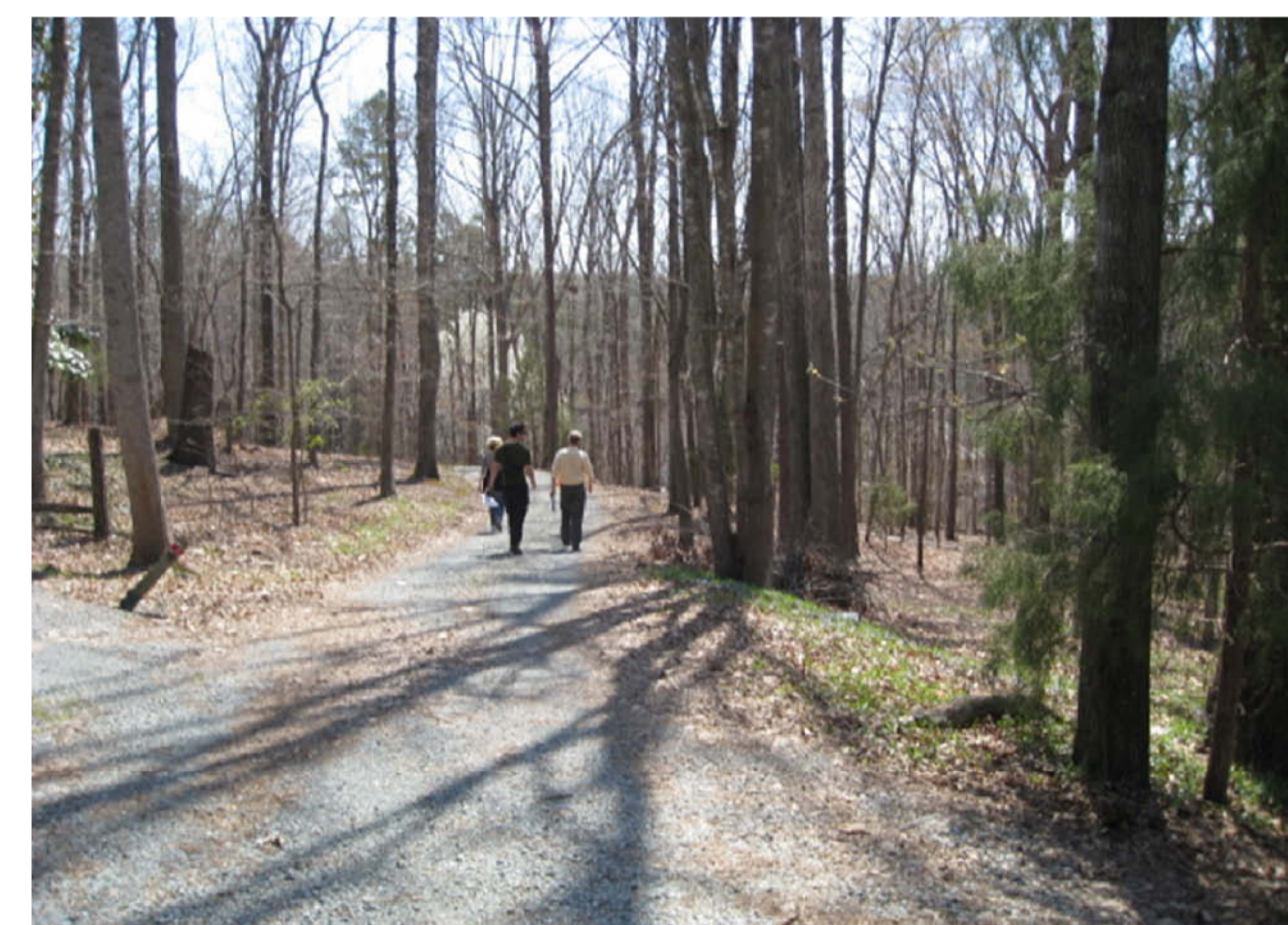
13. C2 - Route heads east on Mt. Bolus Drive - no sidewalks.



14. C2 - Heading east on Mt. Bolus Drive - no sidewalks.



15. C2 - Route heads south.



16. C2 - Route continue south.



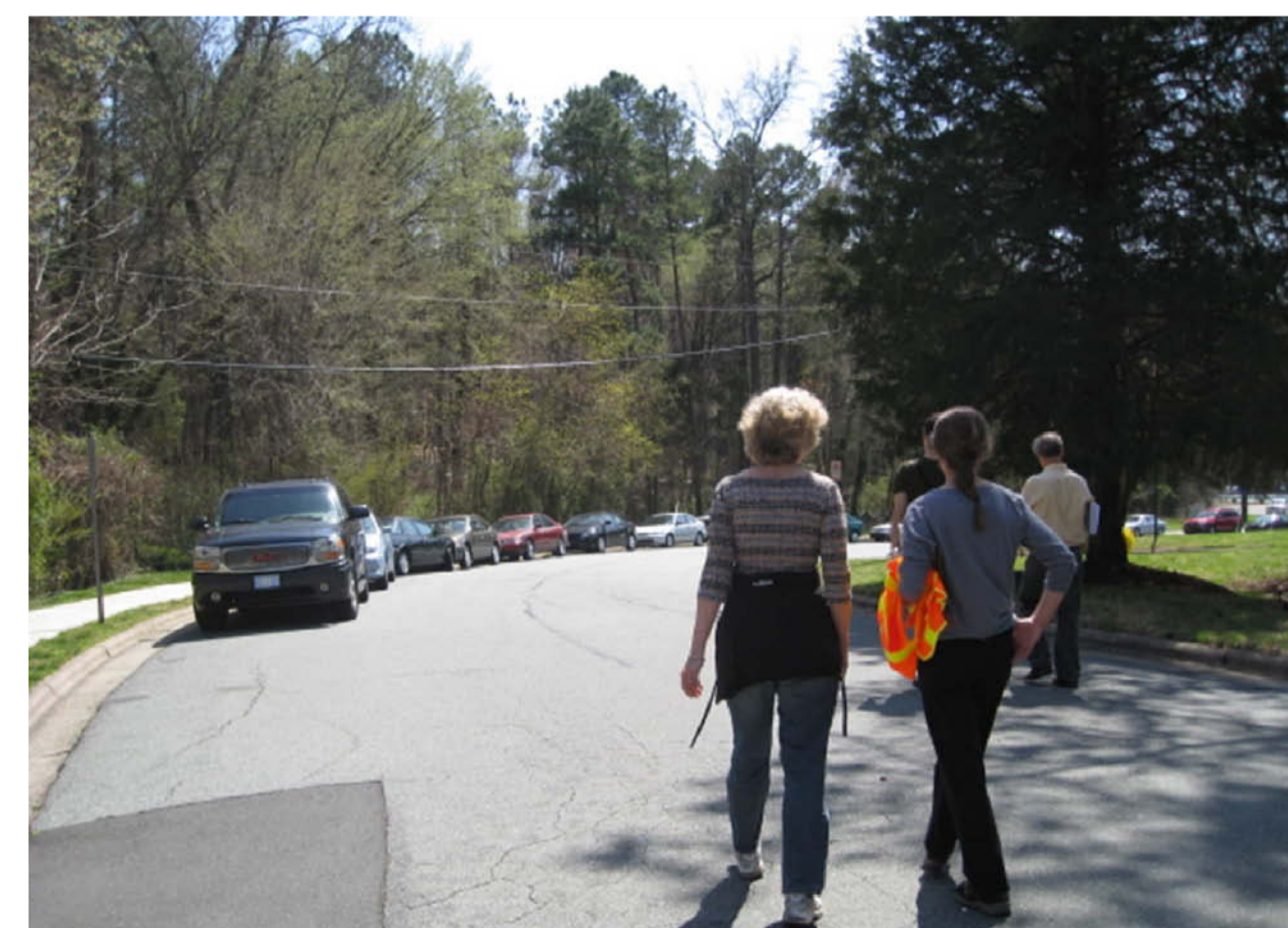
17. C2 - Route heads west through the woods.



18. C2 - Route turns south - continuing through the woods - we begin to see sewer manholes.



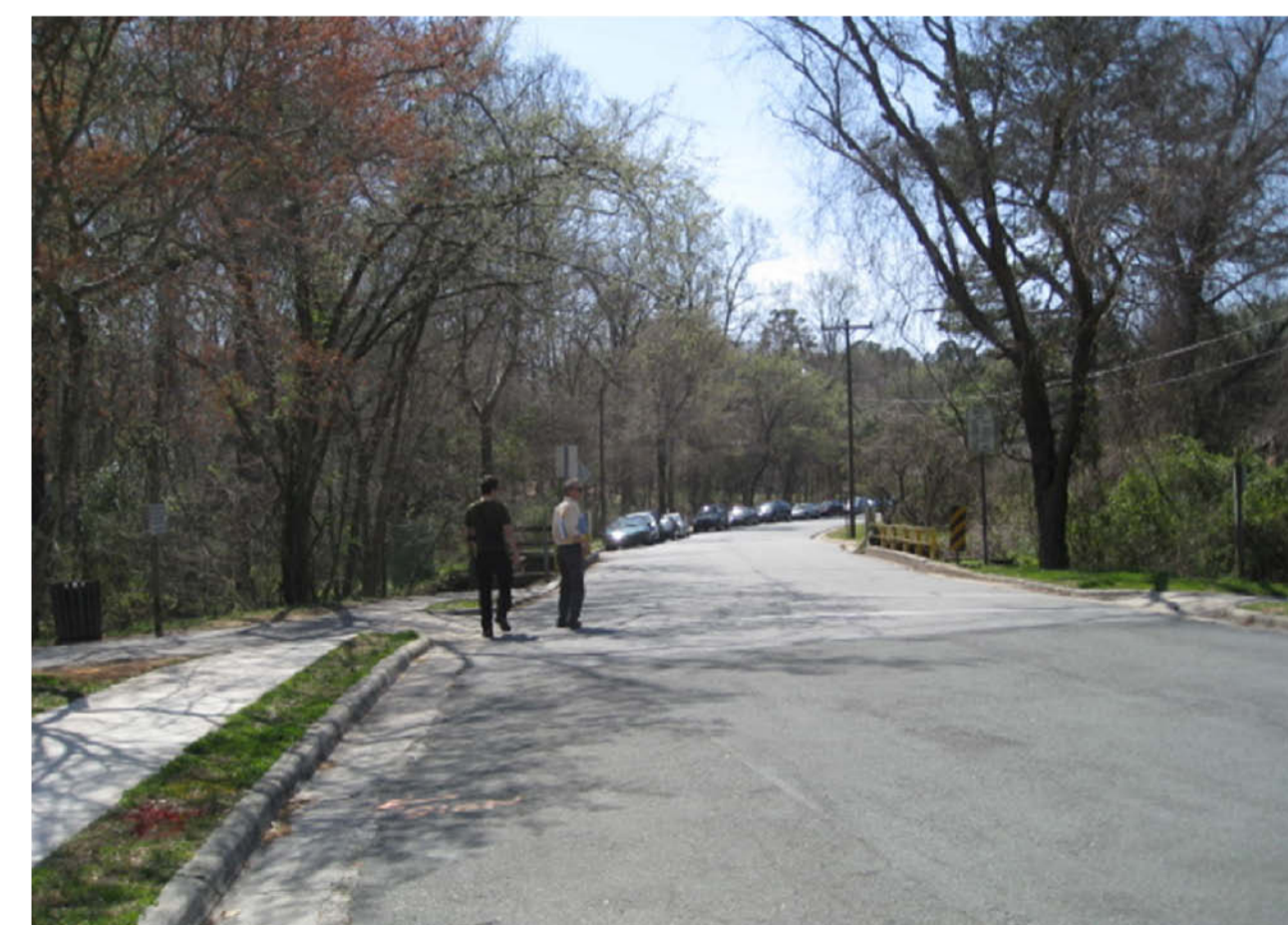
19. C2 - Route continues to follow easement south towards Bolinwood Drive.



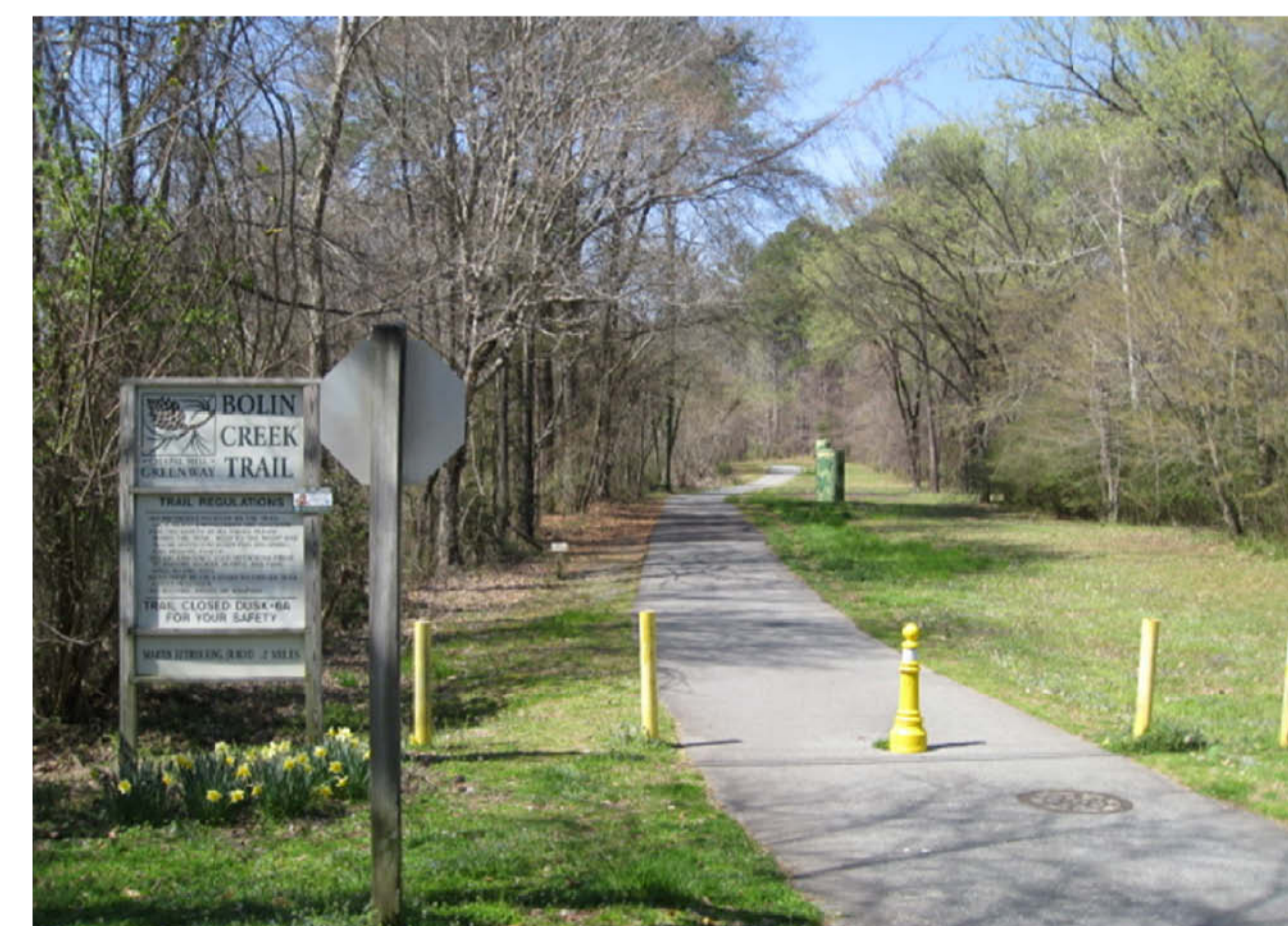
20. C3 - The wooded easement ends at a parking lot just above Bolinwood Dr. We walk through the parking lot to travel south Bolinwood Drive. Note on-street parking and sidewalk on east side.



21. C3 - Heading south on Bolinwood Drive. Note sidewalk and on-street parking on east side of Drive.



22. C3 - Continuing south on Bolinwood Dr. at Bolin Creek Greenway crossing.



23. C3 - Bolinwood Dr. at Bolin Creek Greenway crossing.



24. C3 - Intersection of Bolinwood Dr. and Hillsborough St. - looking south.



25. C4 - Intersection of Bolinwood Dr. And Hillsborough St. - looking east. Sidewalks both sides of road.



26. C4 - Hillsborough St. traveling south. Note that sidewalk ends on east side.



27. C4 - Hillsborough St. traveling south - approaching Franklin St./Raleigh St. intersection.



28. C5 - Franklin St./Raleigh St. intersection area traveling south.



29. C5 - Cameron Ave. traveling west towards Old Well.